

The background of the slide features a large, faint, circular seal of the State of Indiana. The seal contains the text "THE STATE OF INDIANA" at the top and "1816" at the bottom. In the center of the seal is a landscape with a rising sun, a plow, and a sheaf of wheat, symbolizing agriculture and industry.

# 21st Century Scholars Auto Enrollment and FAFSA Update

**Student Advocates Conference**

Joshua Garrison

Senior Associate Commissioner and Chief of Staff

Indiana Commission for Higher Education

STUDENT ADVOCATES CONFERENCE

---

# 21ST CENTURY SCHOLARS



INDIANA COMMISSION *for*  
HIGHER EDUCATION

## 21ST CENTURY SCHOLARS - BACKGROUND

- ▶ The program was established in 1990 to increase Hoosier students' aspirations for and access to higher education.
- ▶ Income-eligible students enroll in 7th or 8th grade.
- ▶ Scholars who fulfill the Scholar Pledge earn up to four years of paid tuition at an Indiana college.
- ▶ More than 50,000 students have earned a degree through 21st Century Scholars.

## 21ST CENTURY SCHOLARS - BACKGROUND

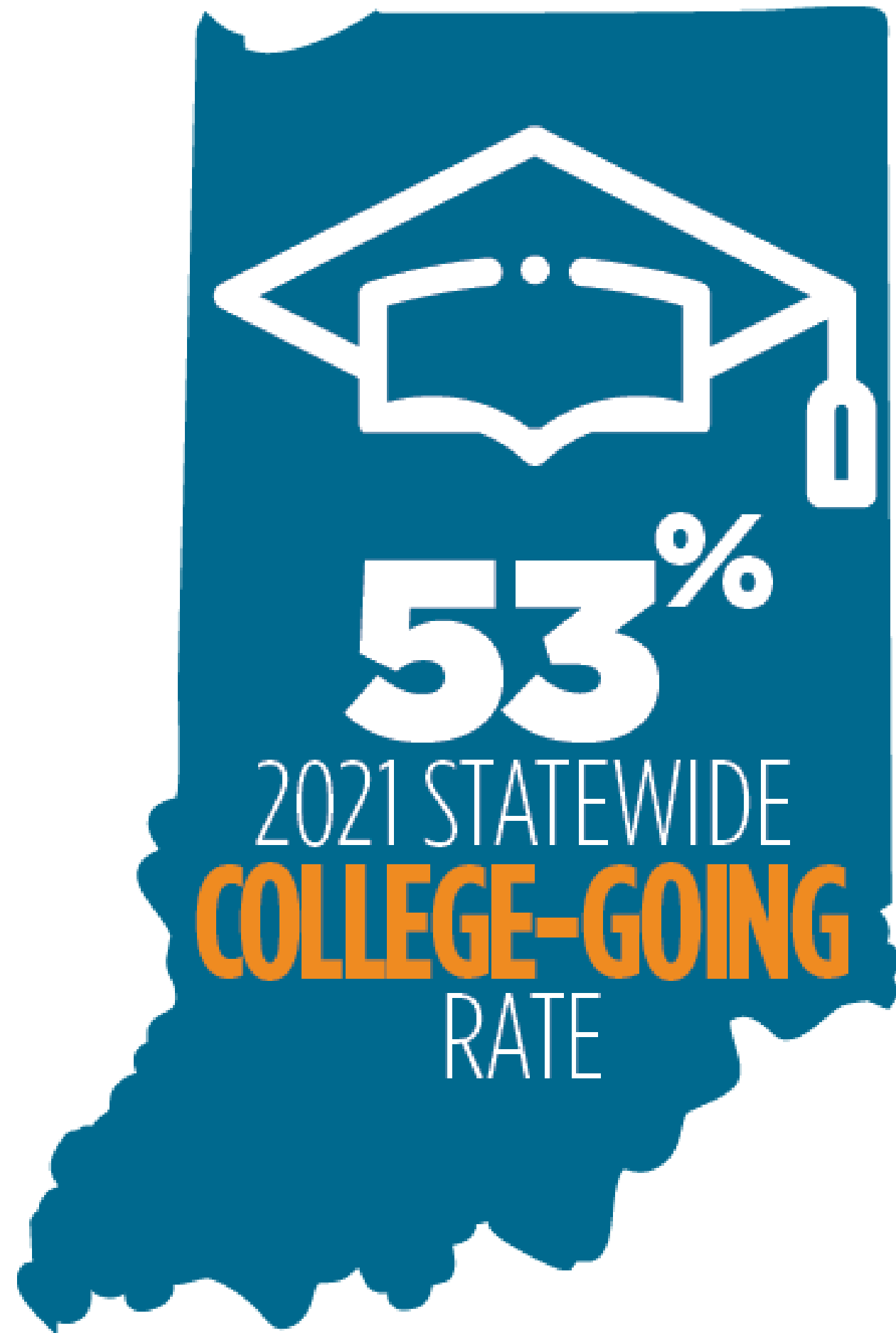
- ▶ Pays up to four years full tuition at Indiana public colleges.
- ▶ Pays partial tuition at approved Indiana private or proprietary colleges.
  - ▶ Private: Pays average cost of 4-year public colleges
  - ▶ Proprietary: Pays equivalent cost of Ivy Tech Community College

## 21ST CENTURY SCHOLARS - REQUIREMENTS

- ▶ Be an US citizen or eligible non-citizen and Indiana resident.
- ▶ Be automatically enrolled or apply in 7th or 8th grade.
- ▶ Agree to the Scholar Pledge (create a ScholarTrack account).
- ▶ Graduate with a 2.5 cumulative Grade Point Average (GPA) on a 4.0 scale.

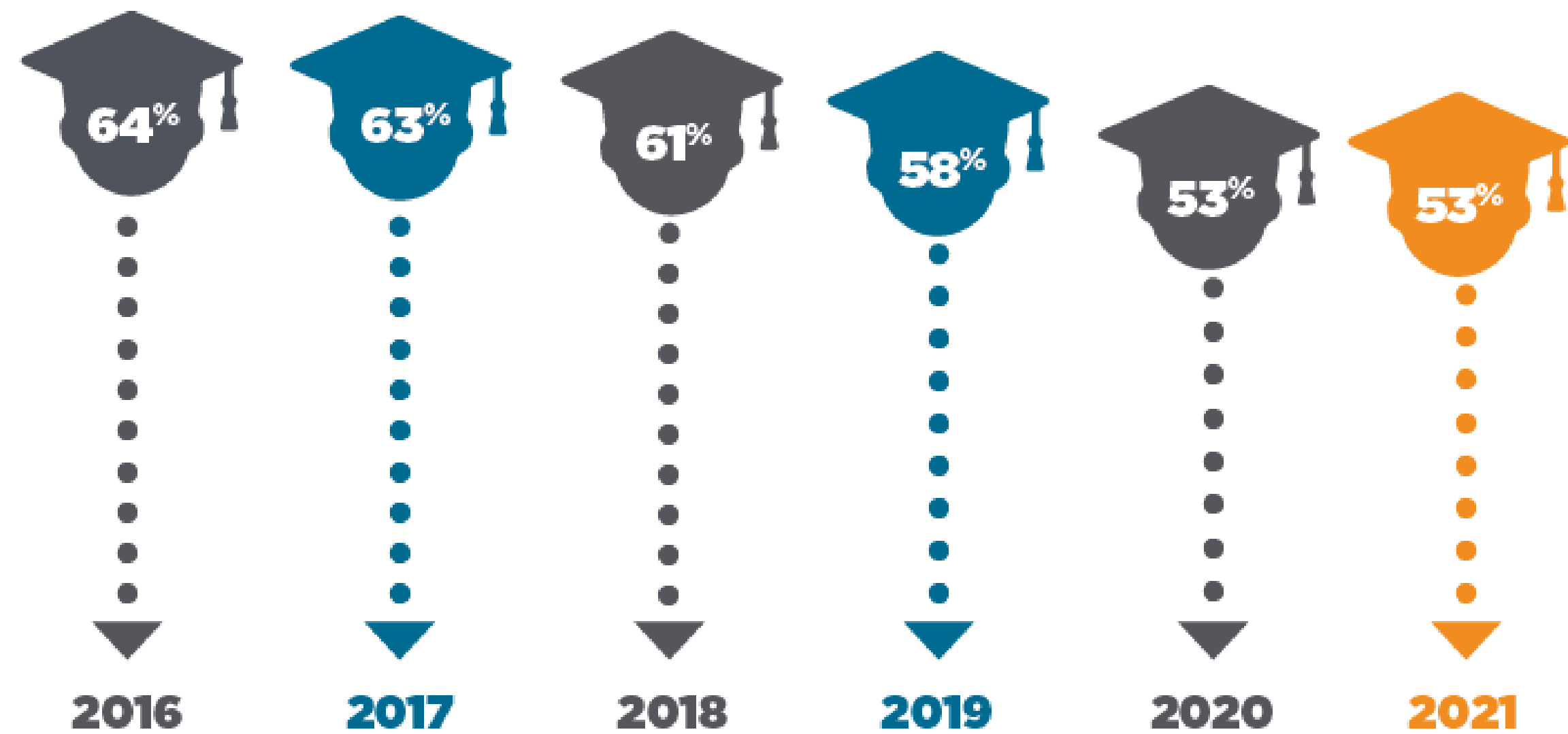
## 21ST CENTURY SCHOLARS - REQUIREMENTS

- ▶ Complete the Scholar Success Program in ScholarTrack.
- ▶ Graduate with at least a Core 40 high school diploma.
- ▶ File the FAFSA by April 15 as a high school senior and each year while attending college.
- ▶ Enroll as a full-time student at an eligible institution within one year of high school graduation.



## HIGH SCHOOLERS GOING STRAIGHT TO COLLEGE

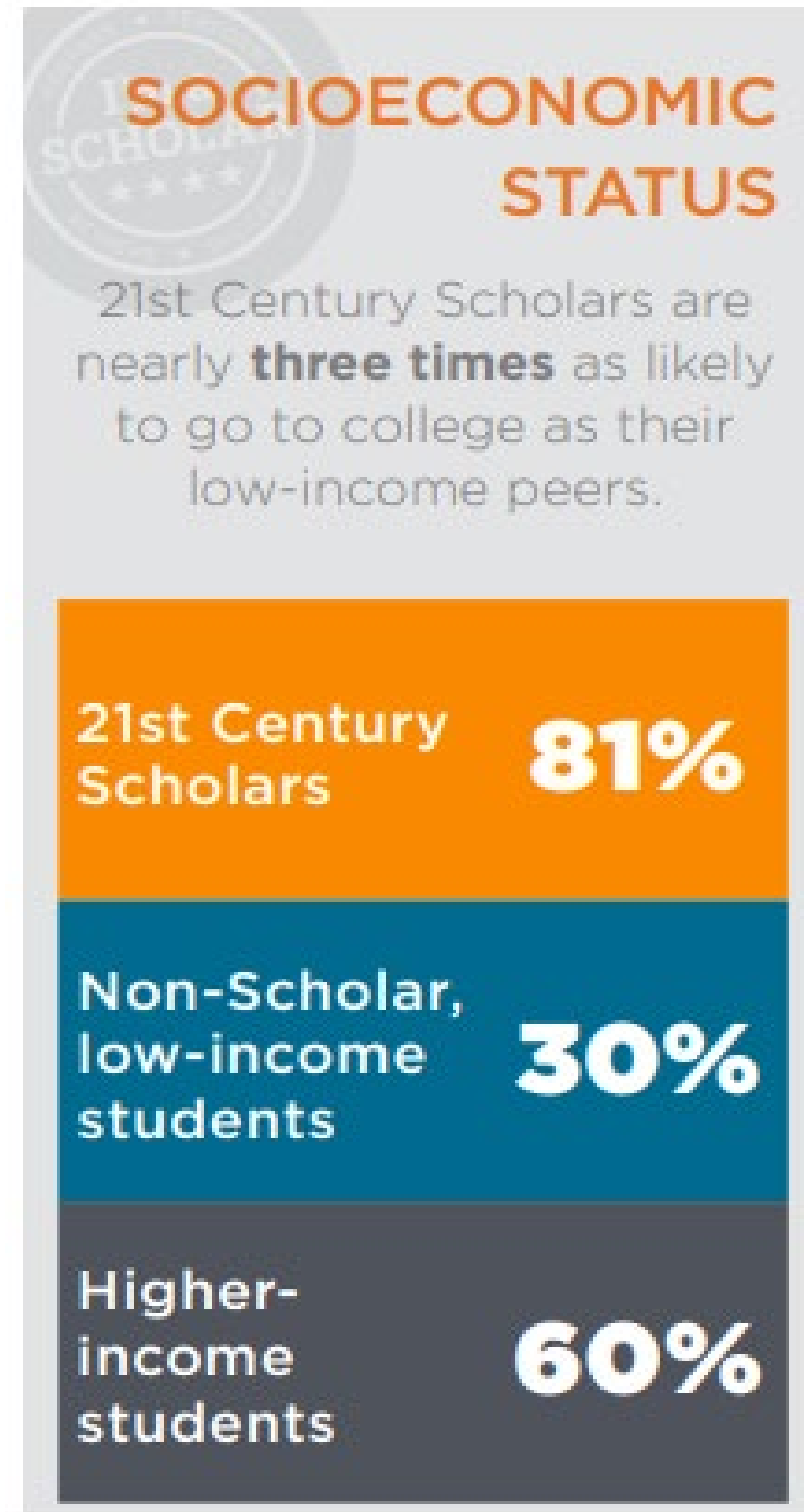
Indiana's college-going rate has declined yearly since 2015, but 2021 was the first year the rate held steady at 53 percent.



Indiana Commission for Higher Education, 2023

# 21ST CENTURY SCHOLARS

- ▶ However, **21st Century Scholars** are almost 30 percentage points more likely to go to college than the state average.
- ▶ Scholars are 20 percentage points more likely to go to college than their high-income peers.





# 21ST CENTURY SCHOLARS – ECONOMIC METRICS

ECONOMIC METRICS BY EDUCATION LEVEL				
8-7-23				
EDUCATION LEVEL	UNEMPLOYMENT RATE (2023)	INDIANA LABOR PARTICIPATION RATE (2023)	WAGES – MEDIAN INCOME (U.S.) (2021)	WAGES - MEDIAN INCOME (U.S.) (2021) (AGES 25-34)
LESS THAN A HIGH SCHOOL DIPLOMA	6.6%	44.6%	\$31,300	\$32,500
HIGH SCHOOL DIPLOMA	2.9%	56.4%	\$40,450	\$39,700
SOME COLLEGE OR ASSOCIATE DEGREE	2.2%	67.1%	\$46,300	\$42,605
BACHELOR'S DEGREE + UP	2.0%	73.3%	\$72,900	\$65,000

## 21ST CENTURY SCHOLARS – AUTO ENROLLMENT

- ▶ HEA 1449 -2023 required the Commission, in partnership with Indiana Department of Education, to identify and enroll income-eligible students into the 21st Century Scholars program.
- ▶ The Commission must notify families of their eligibility and parents/guardians may **opt their student out** of the program.
- ▶ Fewer than half of financially eligible students enrolled in the program in the past.

## 21ST CENTURY SCHOLARS - AUTOENROLLMENT

- ▶ The Commission auto-enrolled financially eligible students in cohorts 2027 and 2028 over the summer. We are currently auto-enrolling cohort 2029.
- ▶ For the **2027 cohort**, the number of students who “self-enrolled” was **19,000**.
- ▶ After automatic enrollment, over **40,000** students were enrolled.

## 21ST CENTURY SCHOLARS - AUTOENROLLMENT

- ▶ Student who are auto-enrolled will show as “Approved Pending Student Pledge.”
- ▶ Let us know if you find students who are eligible, but not auto-enrolled (no **hypotheticals**).
- ▶ Notification letters to cohort 2027 and 2028 students and families will be sent in the coming weeks.
- ▶ Students who are not automatically may enroll via ScholarTrack after October 1 each year.

# 21ST CENTURY SCHOLARS – NUMBERS

## College Matters Cohort Schools

- ▶ Cohort 2024 Enrolled Scholars – approx. 15,000 scholars
- ▶ Cohort 2027 Enrolled Scholars – approx. 46,000 scholars
  - ▶ Approx. 20,000 – Approved
  - ▶ Approx. 26,000 – Approved Pending Pledge

## ADDITIONAL INFORMATION

- ▶ Students must be 13 or older to create a ScholarTrack account.
- ▶ Scholars should accept their pledge by the end of their freshman year.
  - ▶ Upgrade their account by adding SSN.
  - ▶ Update their ScholarTrack email to a non-school email.
- ▶ Ensure your schools and students have save listed/unblocked emails from **@che.in.gov** and **@subscriptions.in.gov**.

STUDENT ADVOCATES CONFERENCE

---

# FAFSA UPDATE



INDIANA COMMISSION *for*  
HIGHER EDUCATION

## FAFSA UPDATE – OVERVIEW

- ▶ The Free Application for Federal Student Aid (FAFSA) determines eligibility for:
  - ▶ Federal Funds;
  - ▶ State Financial Aid; and
  - ▶ Some Institutions and Merit Aid
- ▶ Historically, the FAFSA opens on October 1.
- ▶ The 24-25 FAFSA has been delayed until December 31.
- ▶ Indiana's priority deadline will still be April 15.



## FAFSA UPDATE – STUDENT AID INDEX

- ▶ The Expected Family Contribution (EFC) is a number used to determine eligibility for financial aid based on information from the FAFSA.
- ▶ The Expected Family Contribution (EFC) is changing to the Student Aid Index (SAI).
- ▶ The lowest EFC value was 0, but the lowest SAI is now -1500

## FAFSA UPDATE – NUMBER IN COLLEGE

- ▶ The EFC was reduced when multiple students in the same family attended college.
- ▶ The SAI will not be reduced when the number in college increases.
- ▶ This will have minimal impact due to the more generous need calculation.
- ▶ Students impacted may seek a professional judgement from their institution.

## FAFSA UPDATE – ASSETS

- ▶ Families are now required to include small business or family farms as an asset on the FAFSA.
- ▶ There are three exceptions:
  - ▶ Maximum Pell Recipient
  - ▶ AGI of less than \$60,000
  - ▶ The student or parent receives certain means tested benefits
- ▶ There is legislation addressing this topic moving through Congress.

## FAFSA UPDATE – FAFSA SUBMISSION SUMMARY

- ▶ Students currently receive a Student Aid Report (SAR) when the FAFSA is filed.
- ▶ This document is a summary of the information submitted on the FAFSA.
- ▶ The name of SAR is changing to the FAFSA Submission Summary.

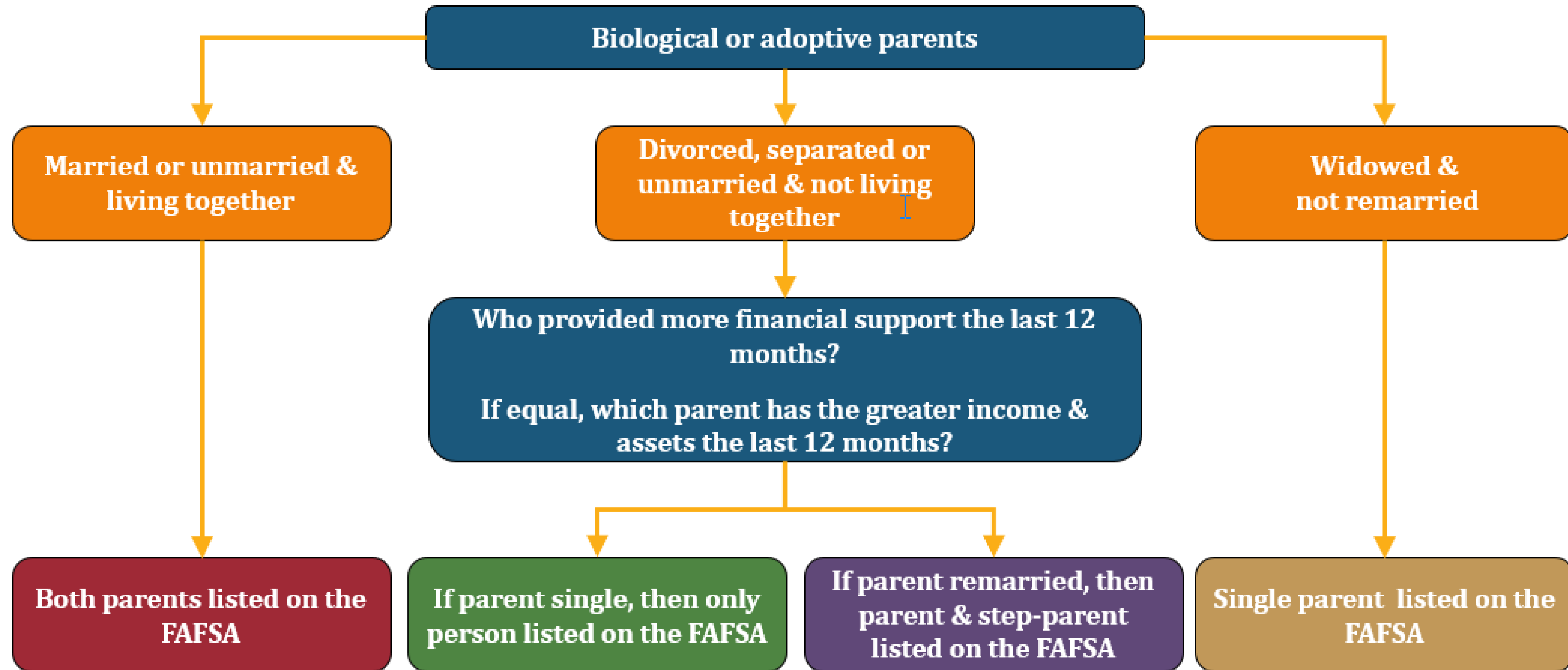
## FAFSA UPDATE – FADDX

- ▶ Historically, FAFSA filers had the option to pull their tax information into the FAFSA via Data Retrieval Tool.
- ▶ This is changing from the IRS DRT to the Future Act Direct Data Exchange (FADDX).
- ▶ The U.S. Department of Education will receive tax information directly from the IRS with consent from the FAFSA filer.
- ▶ No consent means no aid.

## FAFSA UPDATES – CONTRIBUTORS

- ▶ Each person is considered a “contributor.”
  - ▶ Student (applicant), parent, other parent, or student spouse.
- ▶ Individuals log in with FSA ID and identify their role.
- ▶ NOTE: While a student or parent can enter information for the other person, it is NOT encouraged due to consent requirement.

# FASFA UPDATE – PARENT



Graphic from ISFAA 2023 Counselor Workshops

# FAFSA UPDATE - PARENT WIZARD

- ▶ Offers a series of filtering questions that determine which parent(s) must be included on a dependent student's FAFSA form as contributors.

The screenshot shows the FAFSA 2024-25 Parent Wizard interface for Student Raya Tran. The top navigation bar includes the FAFSA logo, the form year (2024-25), the student's name, and options to Save and view the FAFSA Menu. A progress indicator at the top shows five steps: 1. Personal Circumstances (active), 2. Demographics, 3. Financials, 4. Colleges, and 5. Signature.

### Tell Us About Your Parents

On the FAFSA<sup>®</sup> form, your "Parent" is your legal (biological or adoptive) parent or stepparent who supports you financially.

Are your parents married to each other?

Yes  No

**You will need to provide information for your parents**  
Based on your answers in this section, you'll need to provide information about both of your parents on your FAFSA form. You can invite your parents to your form so they can complete their required sections.

Navigation buttons: Previous (disabled), Continue (active).



## FAFSA UPDATE – MARITAL STATUS

- ▶ Married filing joint 2022 tax return with current spouse.
  - ▶ 1 contributor section, 1 consent, & combined tax info transferred via FADDX
- ▶ Married filing separate 2022 tax returns.
  - ▶ 2 contributor sections, 2 consents & separate tax info transferred via FADDX
- ▶ Single filing a 2022 tax return with a “single” type tax filing status.
  - ▶ 1 contributor section, 1 consent, & tax info transferred via FADDX

# FAFSA UPDATE – FSA ID

- ▶ **All contributors** must have an FSA ID to access the 2024-25 FAFSA form online.
- ▶ Identity match required for each contributor to verify FSA ID.
- ▶ A verified email address will be required to establish an account.
- ▶ Users can apply without entering an SSN or Individual Taxpayer Identification Number (ITIN).
  - ▶ Must complete a knowledge-based identity verification process

## FAFSA UPDATES – FSA ID

- ▶ Create account at: *studentaid.gov*
  - ▶ Individuals with Social Security Numbers (SSN) are confirmed by the Social Security Administration.
  - ▶ For those without SSN – will launch with the 2024-25 FAFSA
- ▶ FSA ID must be set up and confirmed before FAFSA filing.
  - ▶ This process could take between 3-7 days
  - ▶ It is not recommended to create an FSA ID and file the FAFSA on the same day.

# FAFSA UPDATE – INDIVIDUALS WITHOUT SSN

- ▶ Students will check the “My parent doesn’t have an SSN” box on the “Invite Parent(s) to This FAFSA Form®” webpage.
- ▶ Individual will be asked up to four knowledge-based questions provided by TransUnion, the consumer credit reporting agency.
  - ▶ Questions may be items such as a previous address, phone number, former employers, loan amount, etc.
  - ▶ If the person correctly answers the questions, their FSA ID will be verified immediately, and they can move directly to complete the FAFSA online.

The image shows two side-by-side forms for inviting a parent or spouse/partner to the FAFSA. Both forms feature a green icon of two people at the top. The left form is titled 'Parent' and the right form is titled 'Parent Spouse or Partner optional'. Each form contains the following fields: First Name, Last Name, Date of Birth (with sub-fields for Month, Day, and Year), Social Security Number (SSN) with a 'Hide' link, a checkbox for 'My parent doesn't have an SSN.', Email Address, and Confirm Email Address. A 'Send Invite' button is located at the bottom of each form.

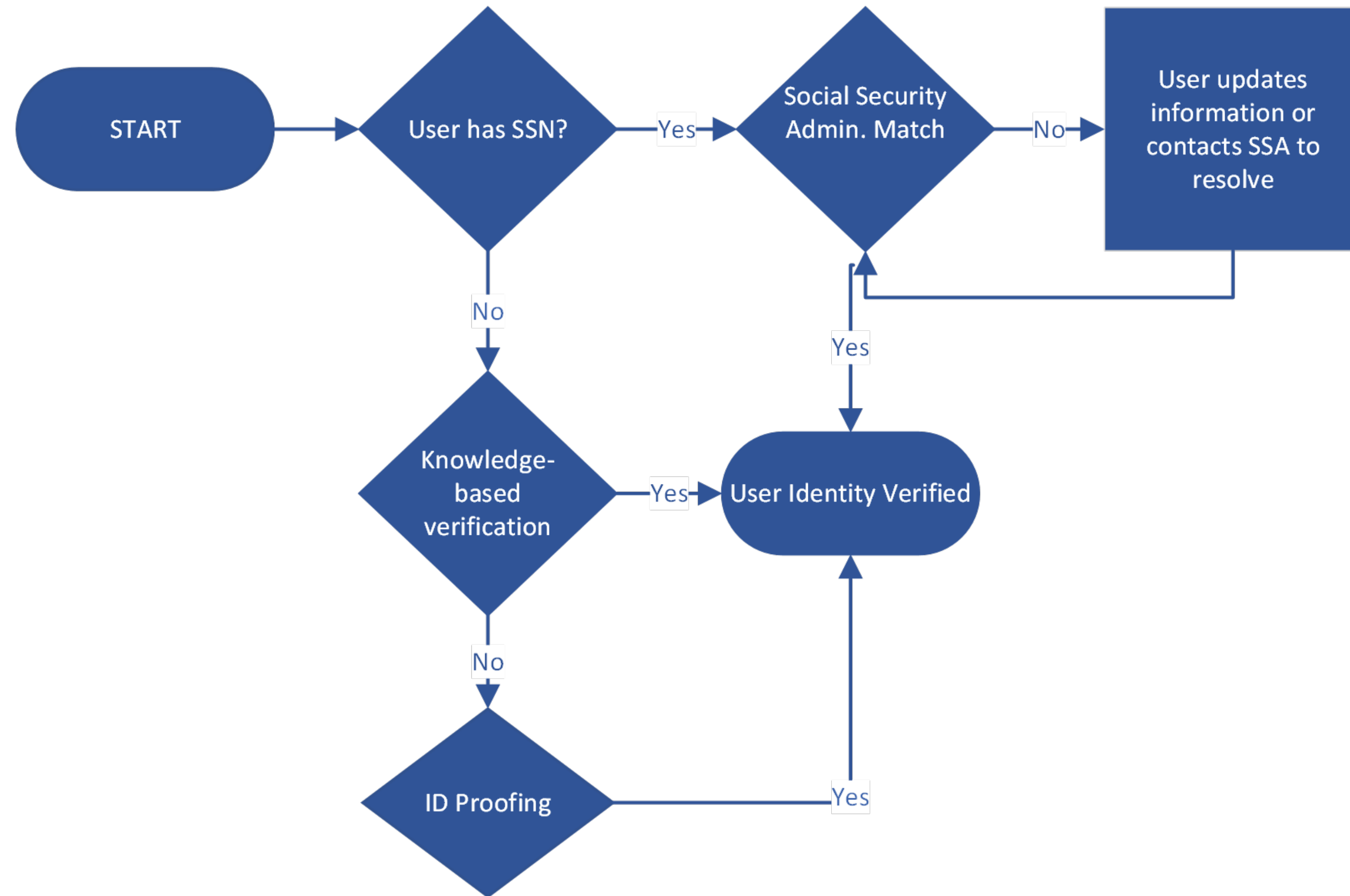
# FAFSA UPDATE – INDIVIDUALS WITHOUT SSN

- ▶ Individuals who do not provide correct answers on the first attempt will receive an email with instructions for an alternative method to complete their identify verification.
  - ▶ Attestation form
  - ▶ Directed to FSA Information Center to initiate identity verification process
- ▶ Case number sent via email and further instructions for submitting the attestation form and a copy of the items listed below via email.
  - ▶ Submit **one** of the following forms of **current** ID:
    - ▶ Driver's license **or**
    - ▶ State or city identification card **or**
    - ▶ Foreign passport
  - ▶ **OR** submit a utility bill **and** one of the following:
    - ▶ Municipal identification card **or**
    - ▶ Community ID **or**
    - ▶ Consular identification card

# FAFSA UPDATE – 24-25 PROTOTYPE

- ▶ The FAFSA prototype offers an advance opportunity to gain a deeper understanding of the 2024–25 FAFSA form user experience ahead of its release.
- ▶ The FAFSA prototype is **not** an early release of the FAFSA demonstration site. Instead, the prototype can be used as a tool to better understand the experience 2024–25 applicants may have.
- ▶ To access the 2024–25 FAFSA prototype, follow the steps below:
  - ▶ Visit <https://fsapartners.ed.gov/fafsa-prototype/2425>
  - ▶ Enter the access code: prototype2425

# FAFSA UPDATE – VERIFICATION FLOW



## FAFSA UPDATES – OTHER UPDATES

- ▶ Can list up to 20 college/universities.
- ▶ Incomplete FAFSA only stays in the system for 45 days.
- ▶ Last contributor to provide information will have the opportunity to submit the FAFSA.



## FAFSA UPDATE – SEA 167-2023

- ▶ This act makes the Free Application for Federal Student Aid (FAFSA) the default option for high school seniors.
- ▶ Broad opt-out provisions are included for parents/guardians and emancipated students.
- ▶ Additionally, a school can waive the requirement for a student after April 15 so long as at least two communications about filing the FAFSA have been sent to the parent/guardian.

## FAFSA UPDATE – SEA 167-2023

- ▶ Indiana will join 6 other states with FAFSA-related legislation.
  - ▶ Alabama jumped from 34th to 9th in seniors filing the FAFSA following the implementation of their legislation.
  - ▶ Indiana was 40th in the nation for the class of 2022.
- ▶ The opt-out form can be found on the Commission's [website](#).
- ▶ Schools will submit the students who opt out with the Graduation Details Report in ScholarTrack.

## FAFSA UPDATE – BEST PRACTICES

- ▶ Encourage all contributors to get their FSA IDs in advance of FAFSA completion nights/events.
- ▶ Early awareness – [Pell Look-up Tables](#)
- ▶ Start identifying potential special or unusual circumstances.
- ▶ Encourage scholarship applications early.

# FAFSA UPDATE - COLLEGE GOAL SUNDAY

- ▶ February 25, 2024
- ▶ 2pm - 4pm (local time)
- ▶ [collegegoalsunday.org](https://collegegoalsunday.org)
- ▶ Multiple locations across Indiana



# FAFSA UPDATE – FIND HELP

- ▶ Federal Student Aid

- ▶ [studentaid.gov/resources#fafsa](https://studentaid.gov/resources#fafsa)

- ▶ [financialaidtoolkit.ed.gov/tk/announcement-detail.jsp?id=better-fafsa-better-future](https://financialaidtoolkit.ed.gov/tk/announcement-detail.jsp?id=better-fafsa-better-future)

- ▶ National College Attainment Network

- ▶ [www.ncan.org/page/better-FAFSA-training-toolkit](https://www.ncan.org/page/better-FAFSA-training-toolkit)

- ▶ INvestEd

- ▶ [www.investedindiana.org](https://www.investedindiana.org)

# FAFSA UPDATE – FAFSA COMPLETION REPORT

- ▶ FAFSA Completion Project Data Share Agreement
- ▶ Senior FAFSA Status will populate on or after February 1st
- ▶ [FAFSA Completion Dashboard](#)
- ▶ [Indiana Graduates Prepared to Succeed Dashboard \(Indiana GPS\)](#)
- ▶ [College Readiness Dashboard](#)



**Northeast  
Region Coordinator**



**Southwest  
Region Coordinator**

# CONTACT US

- ▶ Contact your Outreach Coordinator at **LearnMoreIndiana.org**
- ▶ Emails
  - ▶ **[schools@che.in.gov](mailto:schools@che.in.gov)**
  - ▶ **[scholars@che.in.gov](mailto:scholars@che.in.gov)**

