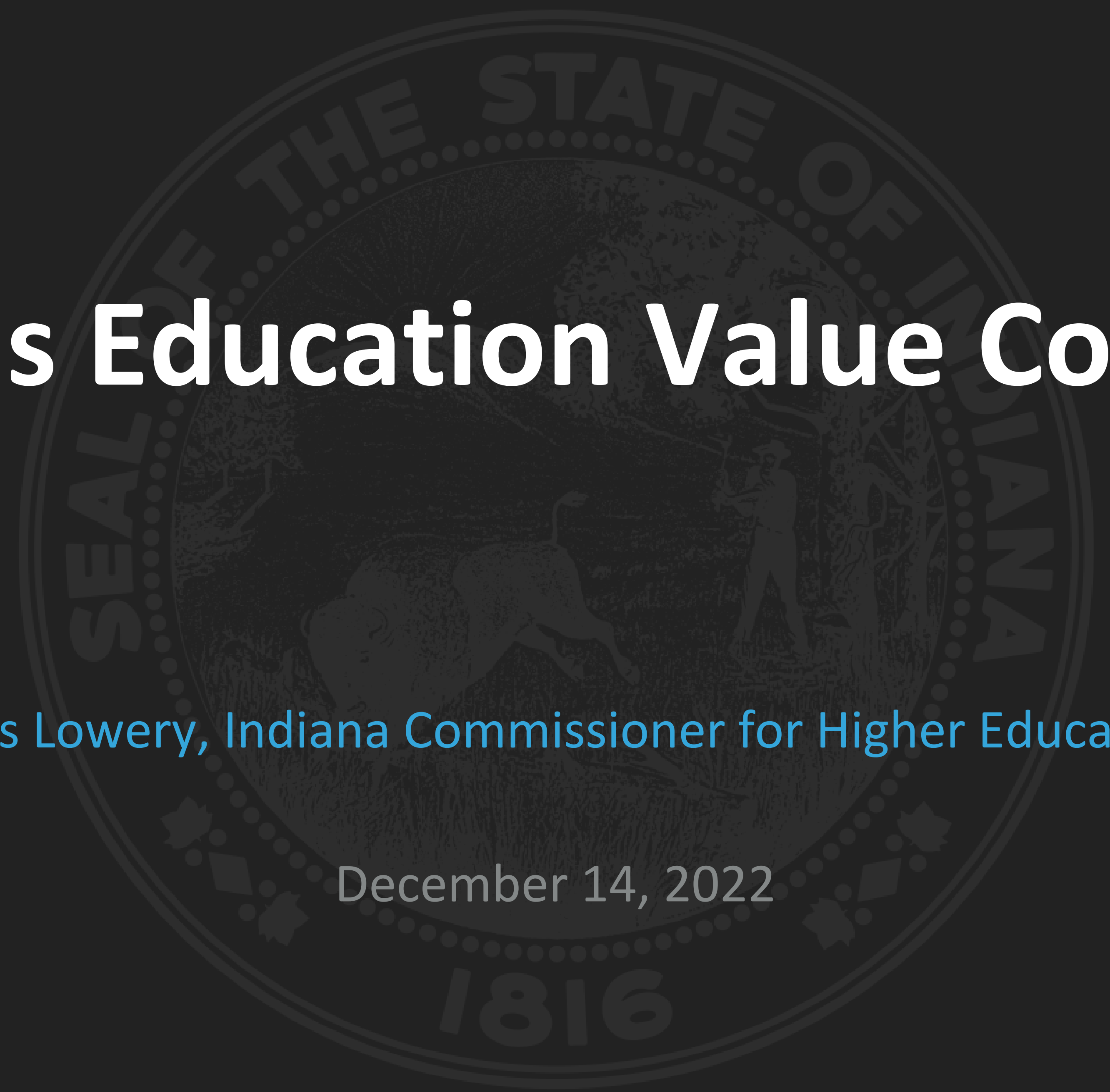


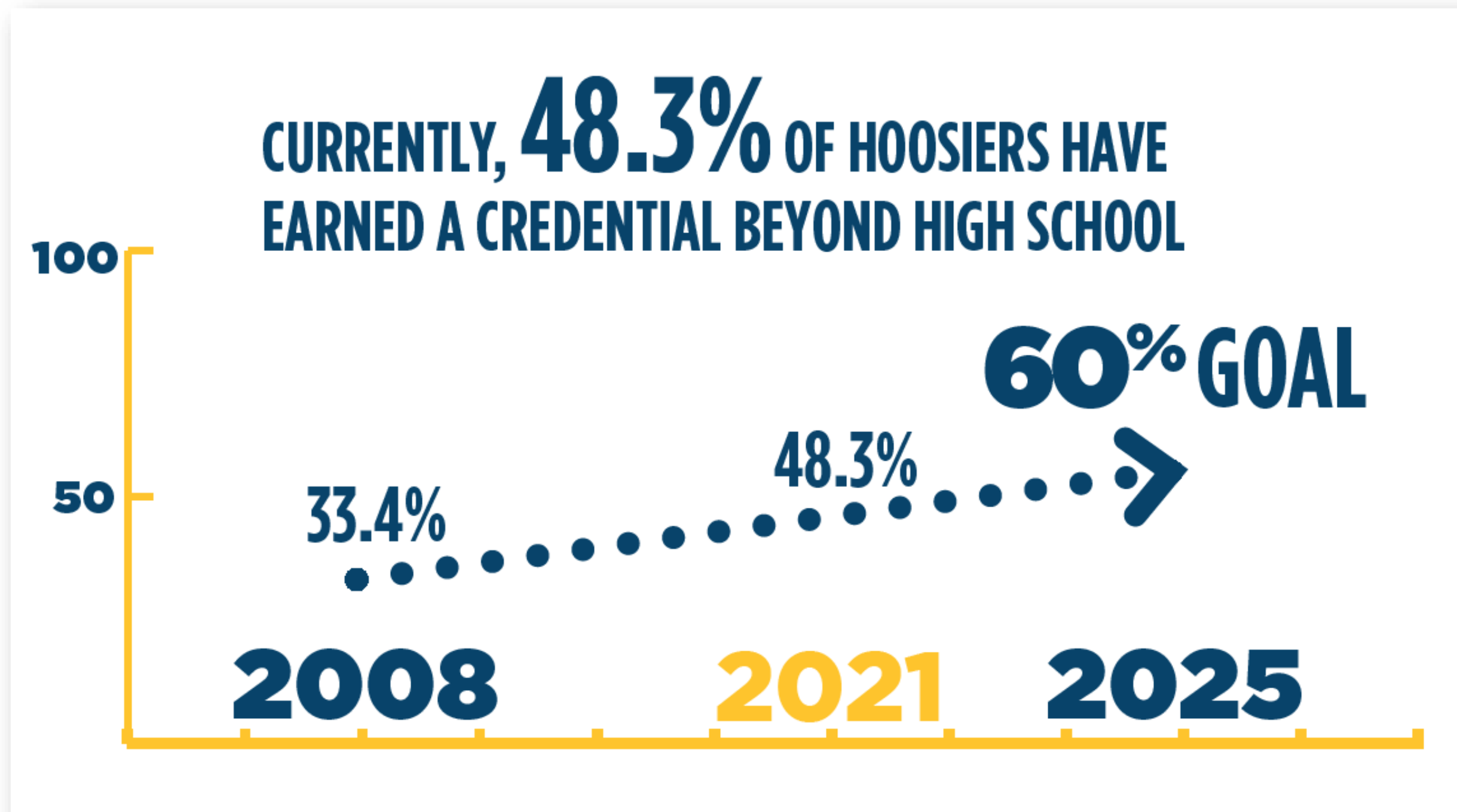
Indiana's Education Value Convening

Chris Lowery, Indiana Commissioner for Higher Education

December 14, 2022



INDIANA'S BIG GOAL



- ▶ **Current rate: 48.3%**
 - ▶ Includes industry certifications, workforce credentials, two- and four-year degrees
- ▶ Indiana ranks **39th out of 52 states and territories**
- ▶ **Three areas of focus:**
 - ▶ College-going rate
 - ▶ Adults without postsecondary credentials
 - ▶ Retention of college graduates in Indiana

INDIANA'S 2020 COLLEGE-GOING RATE

53%

**College-Going Rate
High School to College**



2

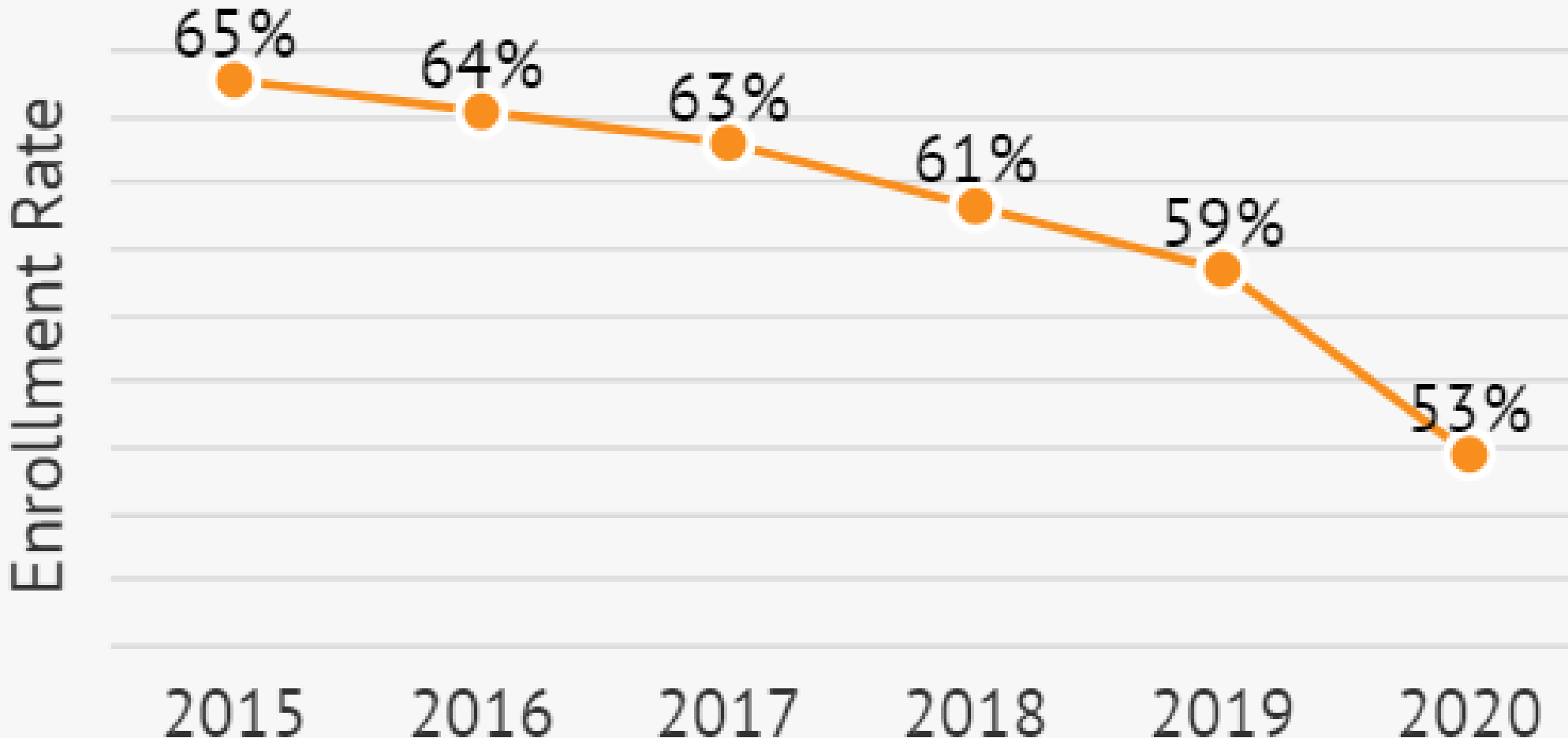
million

Adult learners in Indiana without a credential



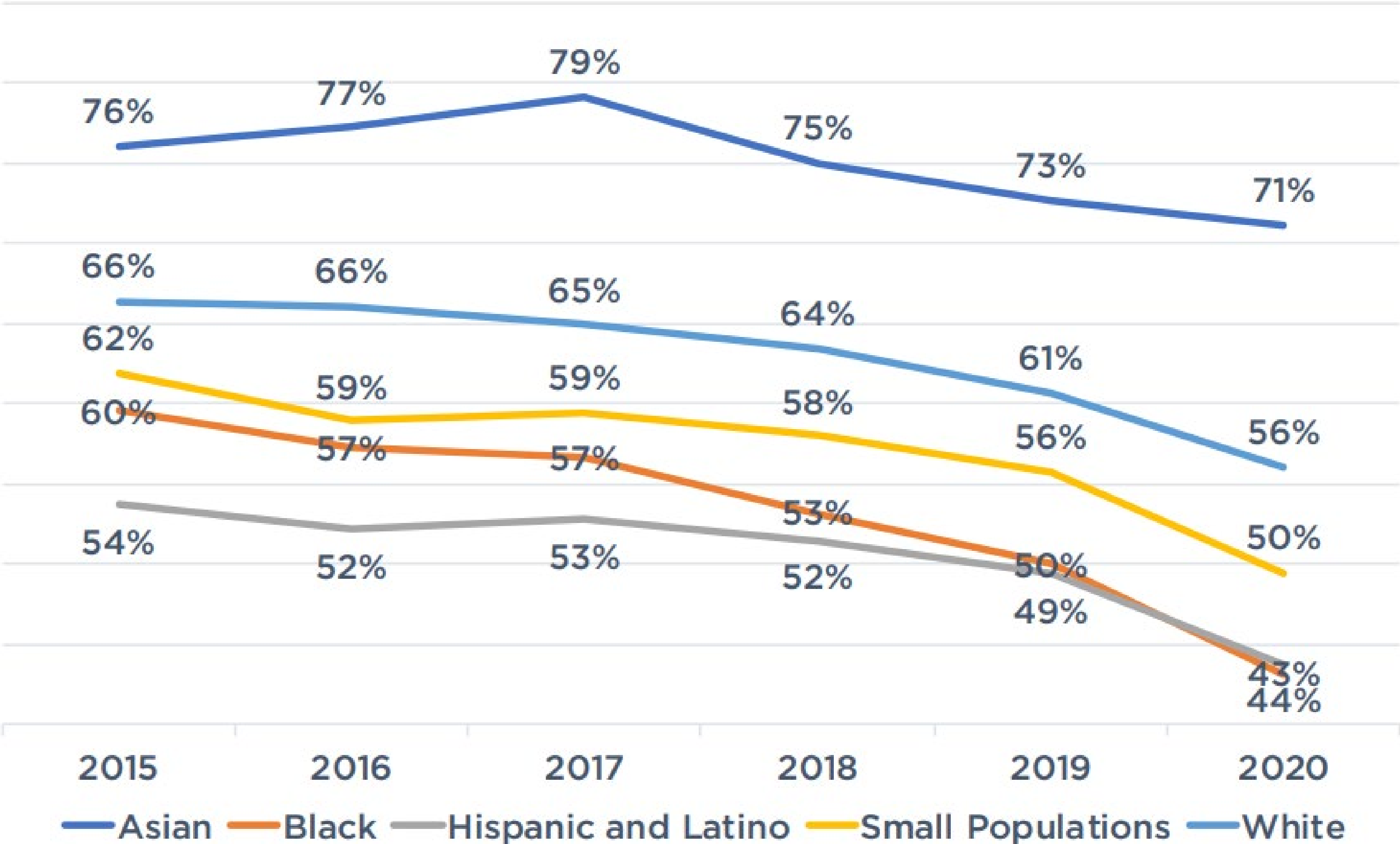
COLLEGE-GOING DECLINE

The rate of high school students enrolling in college continues to drop.



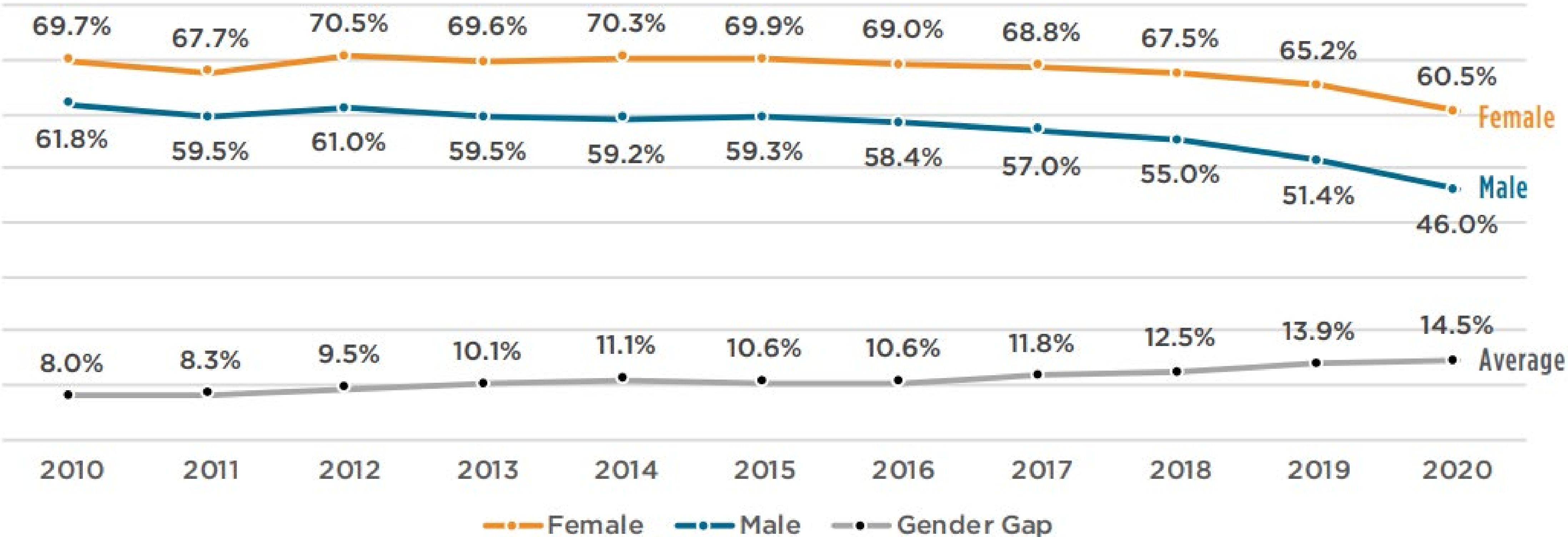
INDIANA'S EQUITY GAPS

College-Going Rate by Race and Ethnicity

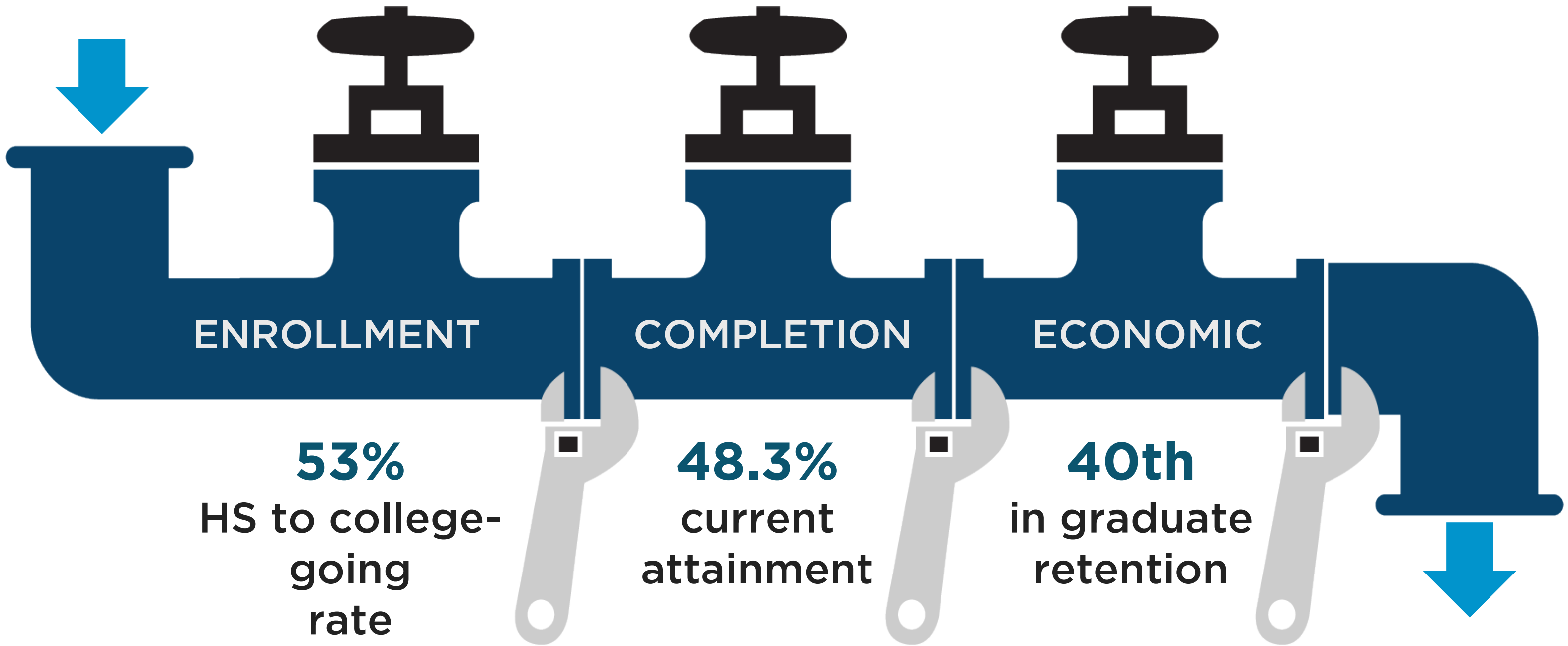


INDIANA'S GENDER GAPS

College-Going Rate by Gender



STEMMING THE LEAKS: INDIANA'S TALENT PIPELINE



ENROLLMENT	COMPLETION	ECONOMIC
<ul style="list-style-type: none"> • GOING-RATE • ADULT 	<ul style="list-style-type: none"> • ON-TIME • OVERALL • ADULT • LOW-INCOME 	<ul style="list-style-type: none"> • GRADUATE RETENTION • RESEARCH



GRADUATE RETENTION

Retention of Grads (attraction v. retention):

 **14th**
in attracting
people to come
to Indiana for college

40th
in
retaining
college graduates 

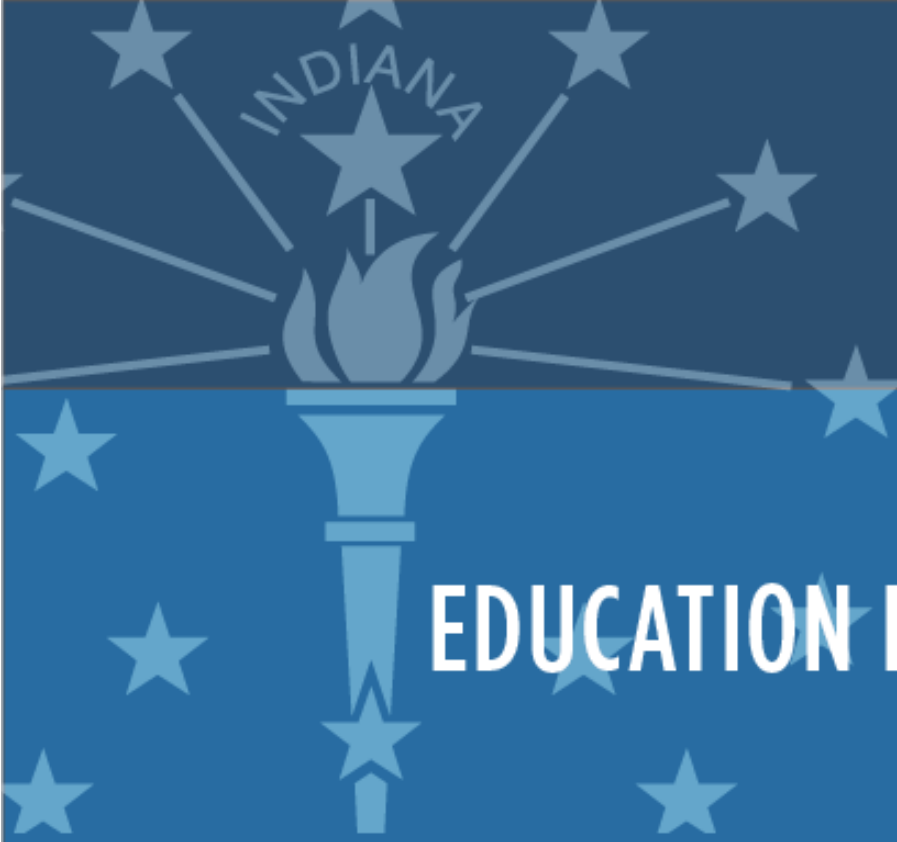


Strategies to increase retention:

- ▶ Working with the IEDC and IDDC to focus on improving graduate retention
- ▶ New funding formula will prioritize graduate retention by Indiana institutions
- ▶ Requiring work-based learning in degree programs



ECONOMIC METRICS BY EDUCATION LEVEL



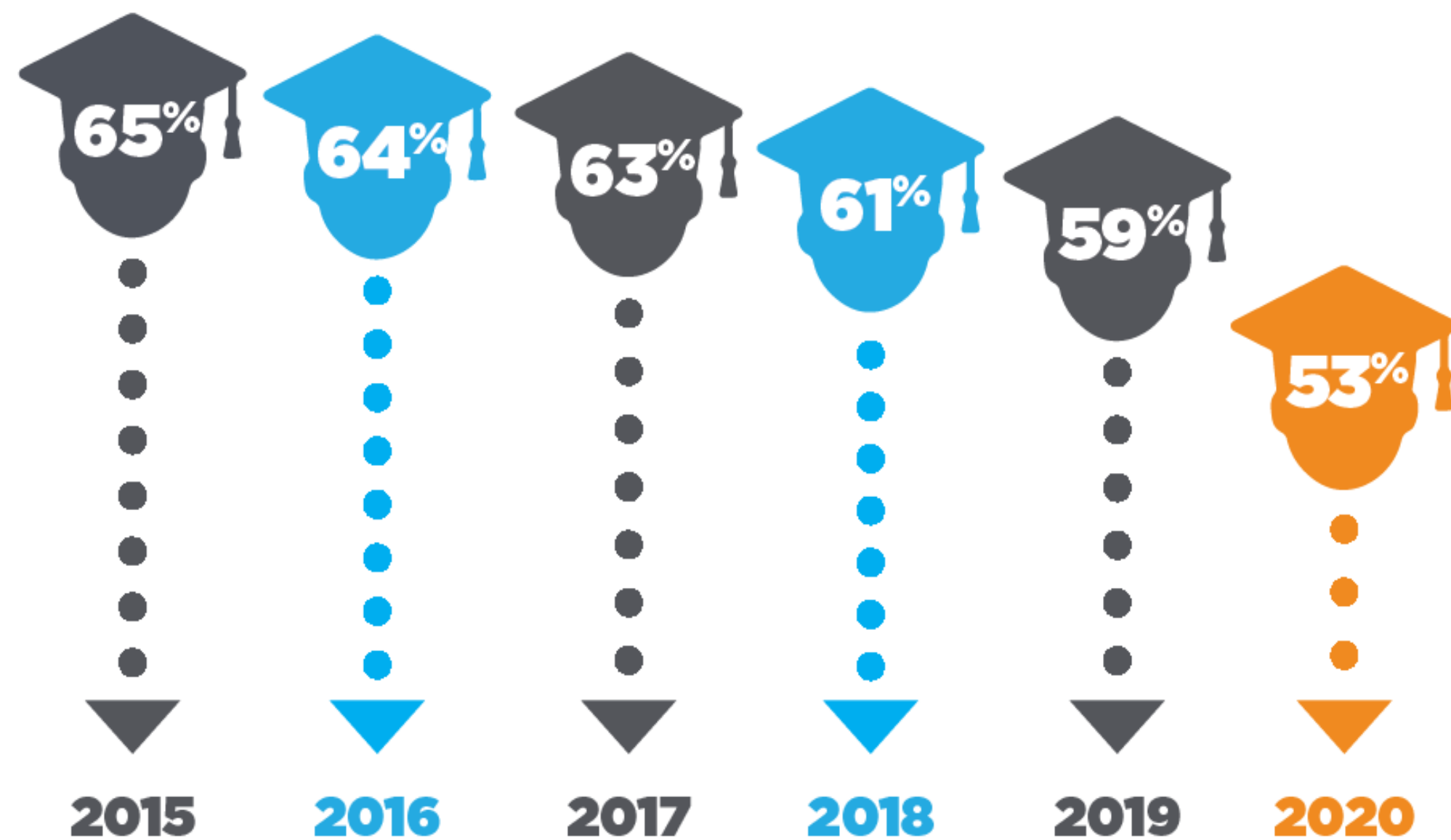
EDUCATION LEVEL	UNEMPLOYMENT RATE	INDIANA LABOR PARTICIPATION RATE	WAGES – MEDIAN INCOME (U.S.) (2019)	WEALTH – AVERAGE NET WORTH (U.S.) (2019)
LESS THAN A HIGH SCHOOL DIPLOMA	6.9%	43.3%	\$30,950	\$137,800
HIGH SCHOOL DIPLOMA	3.0%	56.1%	\$39,050	\$305,200
SOME COLLEGE OR ASSOCIATE DEGREE	1.6%	67.4%	\$44,850	\$376,400
BACHELOR'S DEGREE + UP	1.9%	72.8%	\$72,000	\$1,519,900

AREAS OF FOCUS

College-Going Rates

High Schoolers Going Straight to College

The rate of high school students enrolling in college continues to drop.



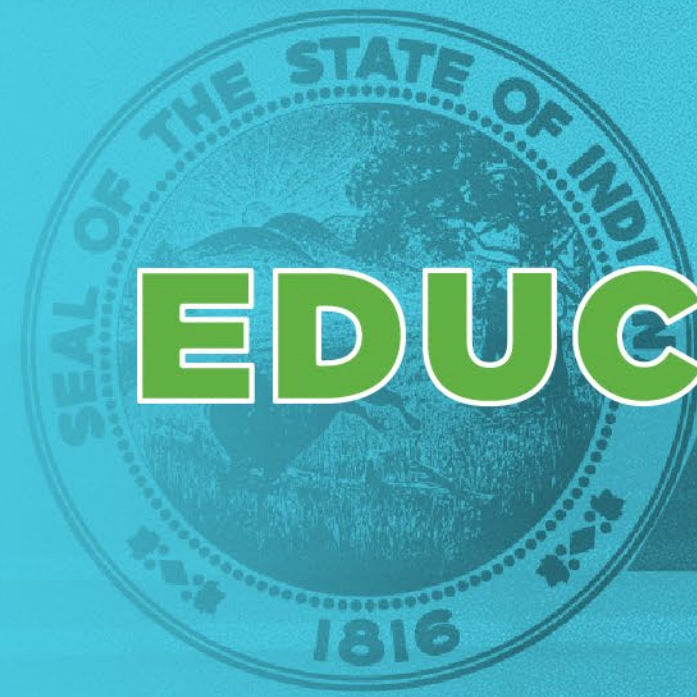
Adult Education Attainment



Indiana Graduate Retention

 **14th**
in attracting
people to come
to Indiana for college

40th
in
retaining
college graduates 



INDIANA EDUCATION VALUE

CONVENING - 2022



INDIANA COMMISSION *for*
HIGHER EDUCATION



INDIANA COMMISSION *for*
HIGHER EDUCATION