

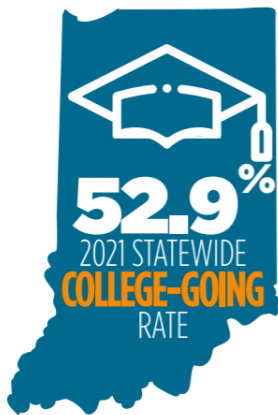


COMMISSION FOR HIGHER EDUCATION PARTNERSHIP PENTAGON

January 2024

Business Partner Support & Resource Guide

The Commission for Higher Education (CHE) has set long-term goals to address higher education trends, such as reversing the declining college-going rates for youth and adults, continuing to improve student persistence and completion and increasing graduate retention in Indiana. These strategic areas are part of improving and reevaluating overall college attainment rates for Indiana. **The ultimate goal of this guide is to inform our partners by providing updated information and avenues of support to strengthen these efforts.**



2023 COLLEGE GOING DATA

As reflected in the [2023 CHE College Going, Enrollment and Completion data](#), Indiana's college-going rate held steady from 2020 to 2021 at 53%. 81% of 21st Century Scholars enrolled in college. The college-going rate includes all options of postsecondary education and training including certificates, two- and four-year degrees.

While the overall rate, **rounded, remained at 53%**, challenges persist across the board. Enrollment rates throughout [different demographics](#) include:

- Hispanic or Latino students: 43%
- Black students: 45%
- Male students: 46%
- Low-income, non-Scholars: 30%



2024-2025 FAFSA

The 2024-2025 [Free Application for Federal Student Aid \(FAFSA\)](#) is now open. The Commission's goal is to have at least 60 percent of high school seniors complete the current FAFSA by Indiana's priority deadline, April 15, 2024. Hoosiers left \$76 million unclaimed in federal financial aid in 2023, funds only accessible through the FAFSA. This is the first year Indiana high school seniors are required to file the FAFSA making Indiana the eighth state in the nation to adopt this as a legislative requirement. For anyone looking to file the 2024-2025 FAFSA, but who have questions about the application, there are many resources available:

- The Commission's Outreach Coordinators are available to assist students, families, and educators across the state. Find an [interactive map](#) and contact the nearest Outreach Coordinator for questions.
- The U.S. Department of Education provides email, live chat, and phone call (1-800-4-FED-AID) assistance.
- Access free FAFSA help through [INvestEd](#).
- ¿Necesitas ayuda en español? Llame al 317-617-0358 o 317-617-0318.
- Higher education institutions around the state are hosting FAFSA filing events for students and families. [Learn More Indiana](#) has a calendar of events that is regularly updated.



THE INDIVIDUAL ECONOMIC IMPACT OF HIGHER EDUCATION

ECONOMIC METRICS by EDUCATION LEVEL 01-18-24				
EDUCATION LEVEL	INDIANA UNEMPLOYMENT RATE (2023)	INDIANA LABOR PARTICIPATION RATE (2023)	WAGES - MEDIAN INCOME (U.S.) (2021)	WAGES - MEDIAN INCOME (U.S.) (2021) (AGES 25-34)
LESS THAN A HIGH SCHOOL DIPLOMA	6.9%	44.8%	\$31,300	\$32,500
HIGH SCHOOL DIPLOMA	3.3%	56.7%	\$40,450	\$39,700
SOME COLLEGE OR ASSOCIATE DEGREE	2.4%	66.9%	\$46,300	\$42,200
BACHELOR'S DEGREE + UP	2.1%	73.1%	\$72,900	\$65,000

SOCIAL METRICS by EDUCATION LEVEL 01-18-24				
EDUCATION LEVEL	PERCENT OF HOOSIERS AGE 25+ (2021)	PERCENT OF WORKING-AGE ADULTS USING SNAP BENEFITS (U.S.) (2021)	INFANT MORTALITY (PER 1,000 BIRTHS) (U.S.) (2020)	LIFE EXPECTANCY (U.S.)
LESS THAN A HIGH SCHOOL DIPLOMA	10%	21%	7.7	72 years
HIGH SCHOOL DIPLOMA	33%	15%	6.9	79 years
SOME COLLEGE OR ASSOCIATE DEGREE	29%	11%	5.4	80 years
BACHELOR'S DEGREE + UP	28%	2%	3.0	85 years

INDIANA'S GOOD NEWS

INDIANA IS TOP 10 IN...

1st IN THE MIDWEST
in need-based financial aid.

3rd IN THE NATION
in certificate and certification attainment
(below an associate degree).

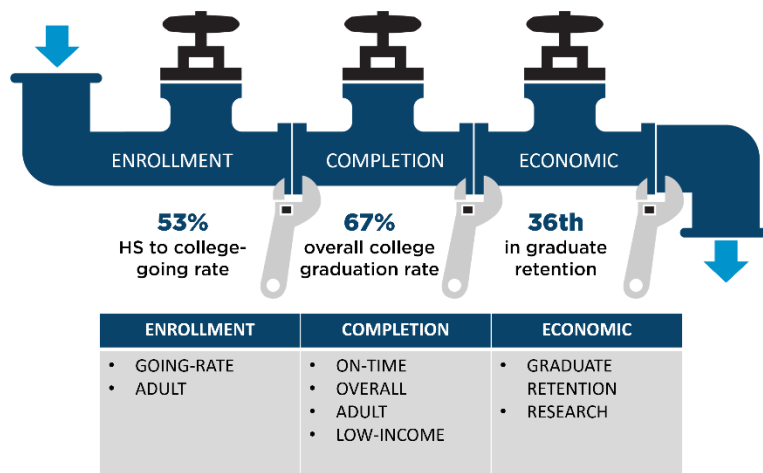
5th IN THE NATION
in need-based financial aid.

6th IN THE NATION
in tuition holding
(lowest average increase in tuition and mandatory fees).

9th BEST IN
attracting students to our higher education institutions.



HOW INDIANA IS SUPPORTING COLLEGE ACCESS



CHE has established three priority areas to support Indiana’s Big Goal of reaching a 60% attainment rate by 2025 – college enrollment, completion and graduate retention. The Commission is guiding efforts to establish Indiana as a top ten state in **college-going rates for youth and adults**. **Many initiatives and legislation have been strategically created to removing barriers to higher education, streamlining the transition from high school to postsecondary education, and intentionally focusing on at-risk and historically underrepresented student groups.**

21st Century Scholars Automatic Enrollment

- Created in 1990, the [21st Century Scholars](#) program is Indiana’s key to narrowing gaps in educational attainment. The scholarship covers up to full tuition and fees at Indiana colleges and universities for students from low-income backgrounds.
- Currently, 81% of 21st Century Scholars attend college versus their low-income peers at 30%.
- Initially students were required to apply during their 7th and 8th grade years for the program, but legislation was passed this year to allow for automatic enrollment.
- In the 2027 cohort, the number of students enrolled in the program more than doubled, going from 19,900 students to over 40,000.
- Each year, 20,000 additional students on average are expected to be enrolled in the program than in the past.

Outcomes-Based Performance Funding Formula

- Revised formula continues the state’s focus on college completion but also emphasizes the critical areas of enrollment, graduate retention and statewide economic outcomes by positioning Indiana as a hub of innovative research.



Indiana Pre-Admissions: Your Path to College

- The [Indiana Pre-Admissions: Your Path to College](#) initiative from CHE, in partnership with Indiana higher education institutions, launched this fall with students receiving a letter introducing the initiative.
- Indiana high school seniors from participating high schools (**327 high schools**) have been pre-admitted to participating in-state public and private institutions based on their cumulative GPA and/or SAT scores, pending an official application to the institution and completing any additional requirements. This allows students to view post-graduation options prior to filling out applications.
 - **38 higher education institutions** participated.
 - The pre-admissions letter was sent to nearly **57,000 high school seniors**.
 - On average, students were pre-admitted to **24 institutions**.
 - **28%** of students were admitted to **all 38** campuses.

Indiana College Core

- The [Indiana College Core](#) is a block of 30 college credits students can earn while in high school that can be transferred to all Indiana public and some private institutions saving each student who completes the Indiana College Core, on average, \$22,000.
- 90 percent of Indiana College Core earners from the class of 2021 went on to attend college. And students who complete the Indiana College Core are more likely to hit early college success (not requiring remediation, completing courses on first attempt, and persisting to second year).
- In the spring of 2020, only 84 Indiana high schools offered the College Core. Now, that number has grown to 222 high schools, with the goal of the Indiana College Core to be offered at all high schools by 2028.

Career and Technical Education

- Through HEA 1002-2023, [Career and Technical Education \(CTE\)](#) is now housed under CHE. CTE connects industry, workforce development and education through the development and implementation of relevant career and technical education programs to prepare students for high-skill, in-demand careers in fields such as: advanced manufacturing, IT, health sciences, agriculture, construction and public safety.
- CTE programs of study are a good option for Hoosiers to receive stackable postsecondary credentials.
- During the 2022-23 school year, **228,254 high school students** enrolled in at least one funded CTE course, representing nearly 60 percent of all high school students in Indiana.
- Almost **32,000 high school seniors** from the graduating class of 2023 earned CTE concentrator status.
- CTE's priority areas include a focus on **dual credit enrollment, credential attainment and work-and-learn learning participation**. This is supported by efforts to standardize and improve program quality, provide career coaching and advising and emphasize workforce placement.



Workforce Ready Grant

- The [Workforce Ready Grant](#) covers tuition, regularly assessed fees and other approved mandatory fees for Hoosiers with a high school diploma but less than a college degree to earn a certificate in some of the state's highest-demand, high-wage industries such as advanced manufacturing, building and construction, health and life sciences, IT and business services, and transportation and logistics.
- Eligibility is **not** based on financial need. The grant covers over 125 high-value certificate programs.
- Since the creation of the Workforce Ready Grant in 2017, there have been **more than 68,000 enrollments and 38,000 completions**.

Frank O'Bannon Grant Funding Increase

- This year, Indiana increased the maximum [Frank O'Bannon Grant](#) award amount by **35%**. Financially eligible students, including adult learners, can file the FAFSA to receive funding through the Frank O'Bannon Grant for their higher education.

HOW YOU CAN SUPPORT AS A BUSINESS PARTNER

Businesses and employers can support college access by:

- Working with schools and institutions to promote career visits and discussions with students, bringing awareness to high-demand career fields and different paths.
- Applying to be a [Career Scholarship Account \(CSA\)](#) provider. Businesses' work-based learning opportunities could allow high school students in grades 10-12 to receive \$5,000 annually to offset costs of participating in an eligible program. Funding can pay for career coaching and navigation services; postsecondary education and training; transportation and equipment; and certification and credentialing examinations.
- Assist in Career Discover Meetings. Juniors and seniors in high school can meet with businesses for thirty minutes to learn about possible future careers and their relevant education. Businesses can reach out to their local high schools to be approved as an entity to meet with students to help them visualize a career roadmap and get going on their career journey.
- Attend [CHE events](#) such as the H. Kent Weldon Conference, Student Advocates Conference, Commission meetings, or committee meetings for up-to-date information and connection opportunities.

If you are looking for ways to cross-collaborate with other sectors, connect with the Commission for support!



RESOURCE GUIDE

- [2023 Indiana College Readiness Dashboard](#)
- [2023 Indiana College Completion Dashboard](#)
- [Indiana Pre-Admissions Press Release](#)
- [Pre-Admissions PowerPoint](#)
- [About Indiana Pre-Admissions](#)
- [21st Century Scholars](#)

CONNECT WITH US

Is there a way CHE can support you in these efforts?

Contact Madison Prillwitz at mprillwitz@che.in.gov

 facebook.com/IndianaCHE/

 [@HigherEdIN](https://www.instagram.com/HigherEdIN)

 linkedin.com/company/iche/

UPCOMING EVENTS

Commission Meeting

03.14.24 | 9AM to 2PM ET

Virtual Meeting

[Microsoft Teams Link](#)

2024 State of Higher Education Address

04.15.24 | 4PM to 6 PM ET

Indiana Statehouse

2024 H. Kent Weldon Conference

04.16.24 | TBD