

The background of the slide features a large, faint, circular seal of the State of Indiana. The seal contains the text "THE STATE OF INDIANA" at the top and "1816" at the bottom. In the center of the seal is a landscape with a rising sun, a plow, and a sheaf of wheat, symbolizing agriculture and industry.

Empowering Students Through Career and Technical Education

Student Advocates Conference

Indiana Commission for Higher Education

December 7, 2023

“CTE is a vitally important part of our education, training and economic development system here in Indiana. It is a pleasure for the CTE team to join the Commission in implementing our broader goals centered around the college-going rate for both youth and adults, postsecondary degree completion and graduate retention.”

Commissioner Chris Lowery



In the chat, please list words or phrases that come to mind when you hear "CTE".

WHAT IS CTE?

- ▶ An educational model that combines academic and technical skills with the knowledge and training needed to succeed in today's labor market
- ▶ Focuses on teaching knowledge and skills in a real-world, applied context
- ▶ Commonly offered through high schools, career centers, and community colleges
- ▶ Prepares individuals for future education or starting a career in high-wage, high-skill, and in-demand career fields



MYTH FACT

MYTH

CTE is only for students who don't want to go to college after high school

FACT

CTE provides multiple exit ramps including seamless pathways to college

- Nearly every state reports higher graduation rates for CTE concentrators compared to all students
- 72% of CTE concentrators nationally enroll in postsecondary education full time immediately after graduating.
- CTE students have many opportunities to earn college credit in high school through dual credit/enrollment. Around 35% of Indiana CTE concentrators earn 9 or more dual credits.

http://s3.amazonaws.com/PCRN/docs/NACTE_FinalReport2014.pdf

INTEGRATED CAREER PATHWAYS



NEXT LEVEL PROGRAMS OF STUDY

PRINCIPLES COURSE:
2 CREDITS

CONCENTRATOR A COURSE:
2 CREDITS

CONCENTRATOR B COURSE:
2 CREDITS

EARN CTE CONCENTRATOR STATUS BY COMPLETING THESE 3 COURSES

CAPSTONE COURSE:
2-6 CREDITS



CAREER LADDERS

Pre-Nursing Program of Study

- CTE Concentrator**
Principles of Healthcare
Medical Terminology
CNA/Dementia Care
- Industry Certification**
CNA
- Early Postsecondary Opportunities**
Dual Credit/Dual Enrollment through Ivy Tech Community College and Vincennes University
- Work-Based Learning**
Embedded WBL
- CTSO Competitive Events**
HOSA

Certificate

**CT Pre-Nursing
TC Healthcare Specialist**
Ivy Tech Community College
Vincennes University
May be completed while still in high school.

Associates

**TC Licensed Practical Nurse
ASN**
Ivy Tech Community College
Vincennes University

Bachelors+

Registered Nurse

High School Diploma

Certified Nursing Asst
\$32,848

Certificate

CCMA/Phlebotomist
\$36,800

Associates

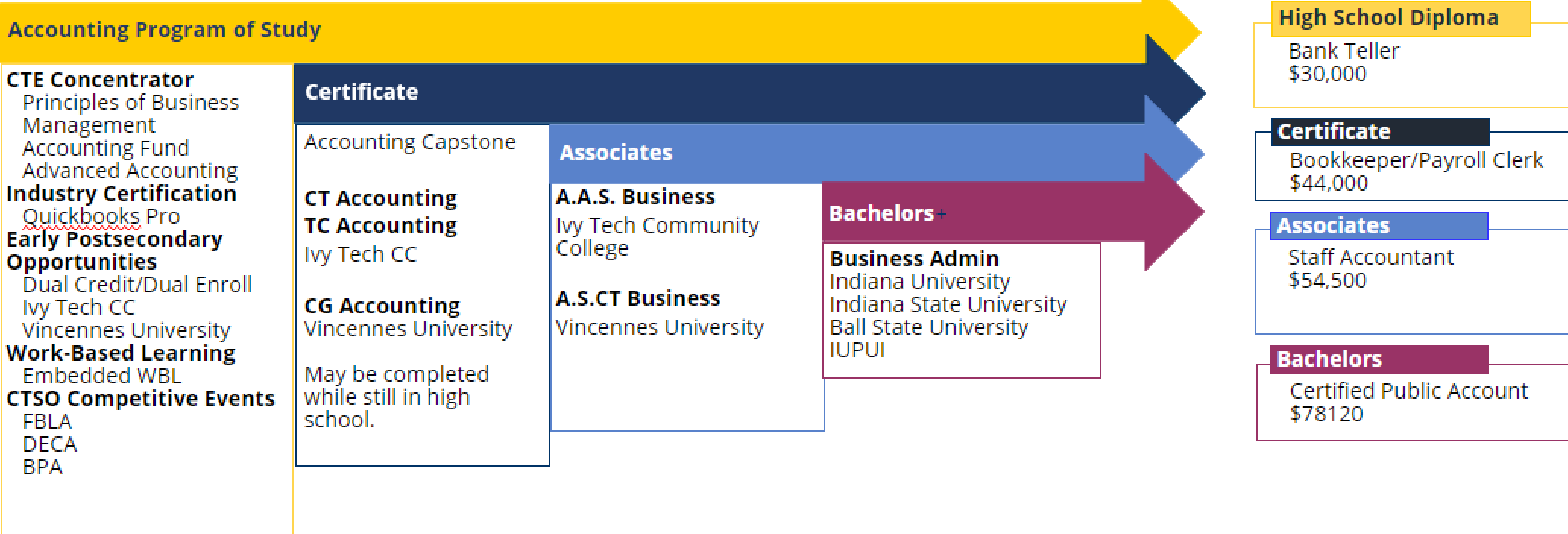
Licensed Practical Nurse
\$48,650

Bachelors

Registered Nurse
\$67,490

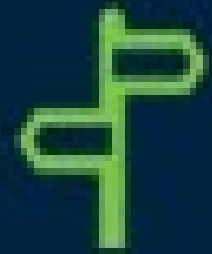


CAREER LADDERS



The Four Keys to Unlock Career Success

These four identified strategies are opportunity multipliers for students nationwide.



Dual Enrollment

Earn college credit during high school



Work-based Learning

Gain early exposure to real world experience



Workforce Credentials

Develop a competitive edge for your career



Career Advising and Navigation

Make informed decisions about life after high school

WHAT IS A POSTSECONDARY CREDENTIAL?

- ▶ Industry Recognized Certifications
- ▶ Graduation Pathways Industry Certifications List (DWD/DOE)
 - ▶ [Grad Pathways Criteria](#) and [Graduation Pathways List](#)
- ▶ Postsecondary Degrees and Certificates
 - ▶ CT / CPCs (15-30 Credits)
 - ▶ Certificate of Graduation (CG) / Technical Certificate (TC) (30 Credits)
 - ▶ Associates



VALUE OF CREDENTIALS



Career and Advanced Credentials

Essential Credentials

Foundational Certifications



KEY QUALITY CONSIDERATIONS - CREDENTIALS

- ▶ *Do these credentials provide learners with employment opportunities upon completion?*
- ▶ *Is the credential earned part of a stackable credential?*
- ▶ *Is the credential recognized by postsecondary education (i.e. does the credential provide college credit)?*
- ▶ *Is the credential nationally recognized?*
- ▶ *How many students in the program of study earn this credential?*



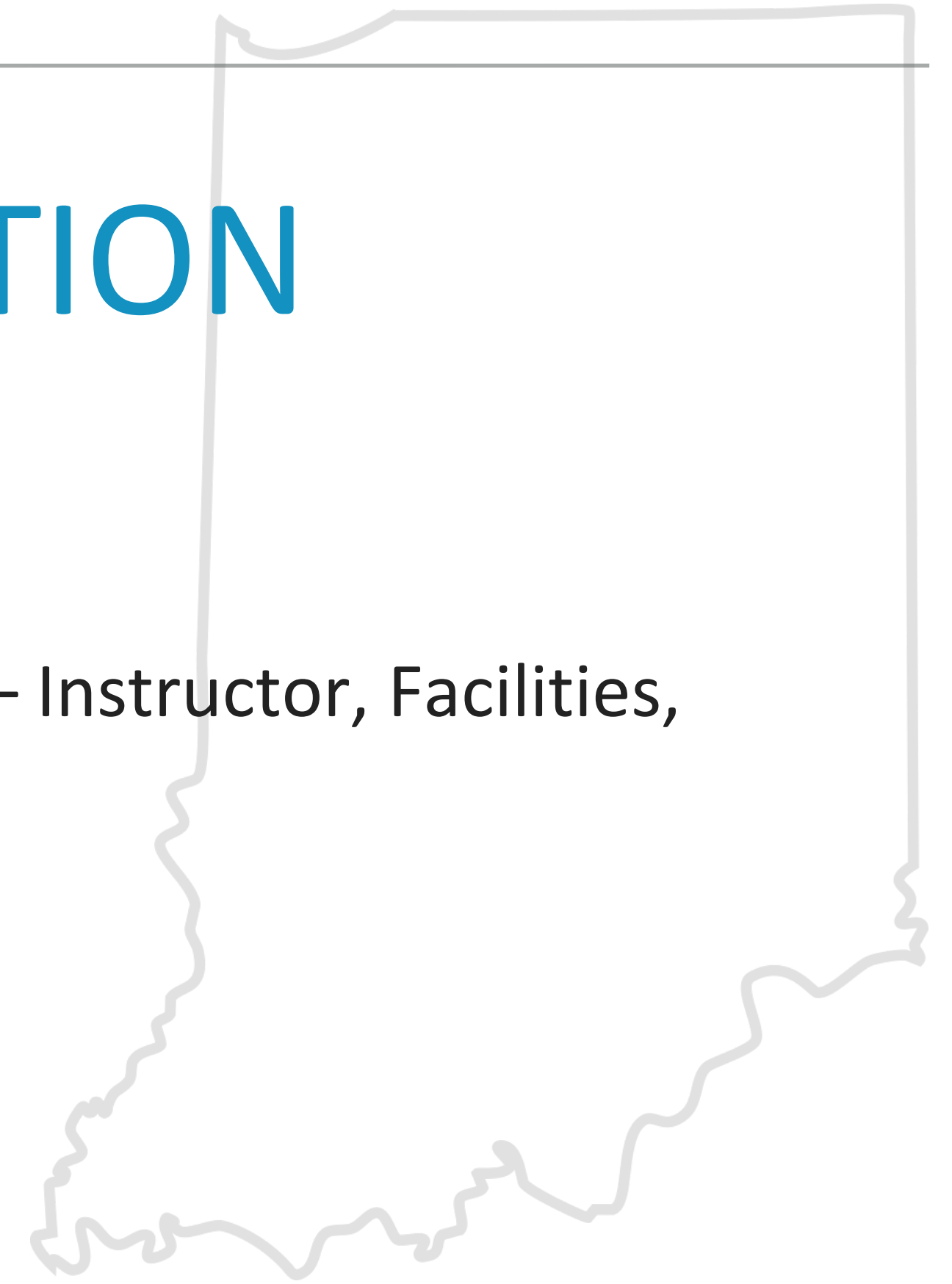
SECONDARY – POSTSECONDARY ALIGNMENT

- ▶ Concurrent Enrollment
 - ▶ Alignment vs Dual Credit,
 - ▶ Transferability and Applicability
- ▶ Dual Credit
 - ▶ Taught by secondary school faculty at the high school
 - ▶ No more than \$25/credit hour if the course is on the DC crosswalk
- ▶ Dual Enrollment
 - ▶ Taught by postsecondary faculty – traditionally on the college campus
 - ▶ Full tuition



ADDITIONAL DUAL CREDIT INFORMATION

- ▶ Secondary School Eligibility
 - ▶ Must be able to offer the course at the same level of quality as on campus – Instructor, Facilities, Materials
- ▶ Instructor Credentialing
 - ▶ Credentialing for CTE Instructors is different than core subjects
- ▶ Alternative Options to Dual Credit
 - ▶ Certification Crosswalks
 - ▶ Dual Enrollment or Third-Party Training Providers



KEY QUALITY CONSIDERATIONS – DUAL CREDIT

- ▶ *How many students are earning dual credit in the program of study?*
- ▶ *Is there a related need for this postsecondary degree in the labor market (i.e. the postsecondary credits will be valuable in the future)?*
- ▶ *What is the quality of postsecondary instruction?*
- ▶ *What data exists regarding the completion rates for degree attainment for learners who were provided early postsecondary opportunities in high school?*



CAREER RELEVANT & WORK-BASED LEARNING

EXPLORE

Activities Include:

Industry Tour

Indiana Career Explorer

Informational Interview

Guest Speaker

ENGAGE

Activities Include:

Industry PBL Challenge

Job Shadow

Career & Technical Student
Organization (CTSO)

EXPERIENCE (WBL)

Activities Include:

Internships

Youth Apprenticeships

Registered Apprenticeships



WORK-BASED LEARNING IS DEFINED AS:

- ▶ **Sustained interactions** between participants (adults/youth) and professionals in real or simulated workplace settings that foster in-depth, firsthand experiences with the tasks required in a given career field, intentionally **aligned and evaluated** with course/training competencies, while offering the opportunity to earn **intentional career outcomes**.

Guiding Principles for CTE:

- ▶ **Sustained interactions** is defined at 75+ hours in a single placement. May be multiple departments, but a single organization
- ▶ **Aligned and evaluated** – required a training plan and aligned to the student’s career pathway
- ▶ **Intentional career outcomes** include industry relevant skills, postsecondary credit attainment, and credentials

WBL EXPERIENCES

	Opportunity/Experience	Examples
Internships DOE Level 2	Workplace Simulation	<ul style="list-style-type: none"> • BERNIE'S PLACE • EAGLE MANUFACTURING
	Academic Internship	<ul style="list-style-type: none"> • CAREER EXPLORATION INTERNSHIP (0530) • CADET TEACHING
	Technical Internship	<ul style="list-style-type: none"> • WBL CAPSTONE (5974) • NLPS CAPSTONE COURSE (EMBEDDED)
Modern Youth Apprenticeships DOE Level 3	Modern Youth Apprenticeship:	<ul style="list-style-type: none"> • MODERN APPRENTICESHIP • CERTIFIED K-12 SEALS
	Pre-Apprenticeship	<ul style="list-style-type: none"> • IKORCC CONSTRUCTION
Registered Apprenticeships DOE Level 4	US DOL Registered Apprenticeship Programs Serving Youth	<ul style="list-style-type: none"> • ABC ELECTRICAL INTERNSHIP – PROSSER

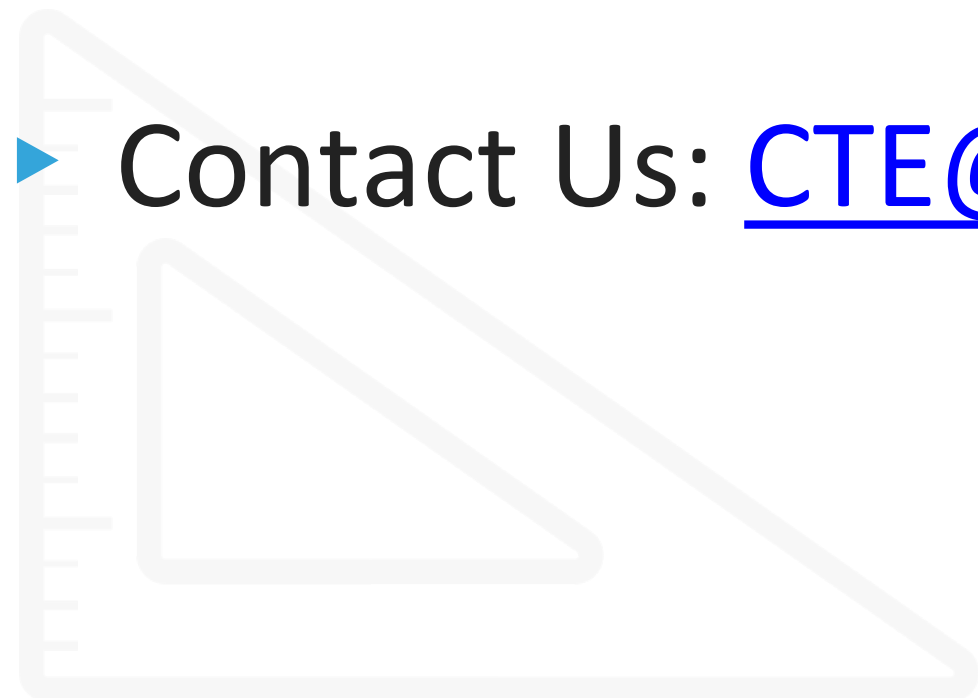
KEY QUALITY CONSIDERATIONS – WBL

- ▶ *Is there a formal training plan that is signed by an employer, learner, and/or parent/guardian?*
- ▶ *Is the WBL experience explicitly linked to classroom learning?*
- ▶ *Are students hired by employers after their WBL experience concludes?*
- ▶ *Are learners graded for WBL activities?*
- ▶ *Do worksite supervisors provide feedback to school on student's performance?*



CTE RESOURCES

- ▶ Career Guide
- ▶ NLPS Review Document
- ▶ CTE Dual Credit Crosswalk
- ▶ CTE Funding Memo
- ▶ Additional Resources available on CTE website
- ▶ Contact Us: CTE@che.in.gov



Indiana Governor's Workforce Cabinet
CAREER AND TECHNICAL EDUCATION

CAREER GUIDE

2022-23 EDITION

EXPLORE!
Dozens of in-demand
career pathways

WHY CTE?
Find out why CTE
offers so many options

**PLAN YOUR
FUTURE**
Create a plan
for success after
high school

**Lea esta guía en
ESPAÑOL**

**NEXT LEVEL
PROGRAMS
OF STUDY**
Find a full list of over
65 revamped programs of
study on pages 50 and 51.



INDIANA COMMISSION *for*
HIGHER EDUCATION