

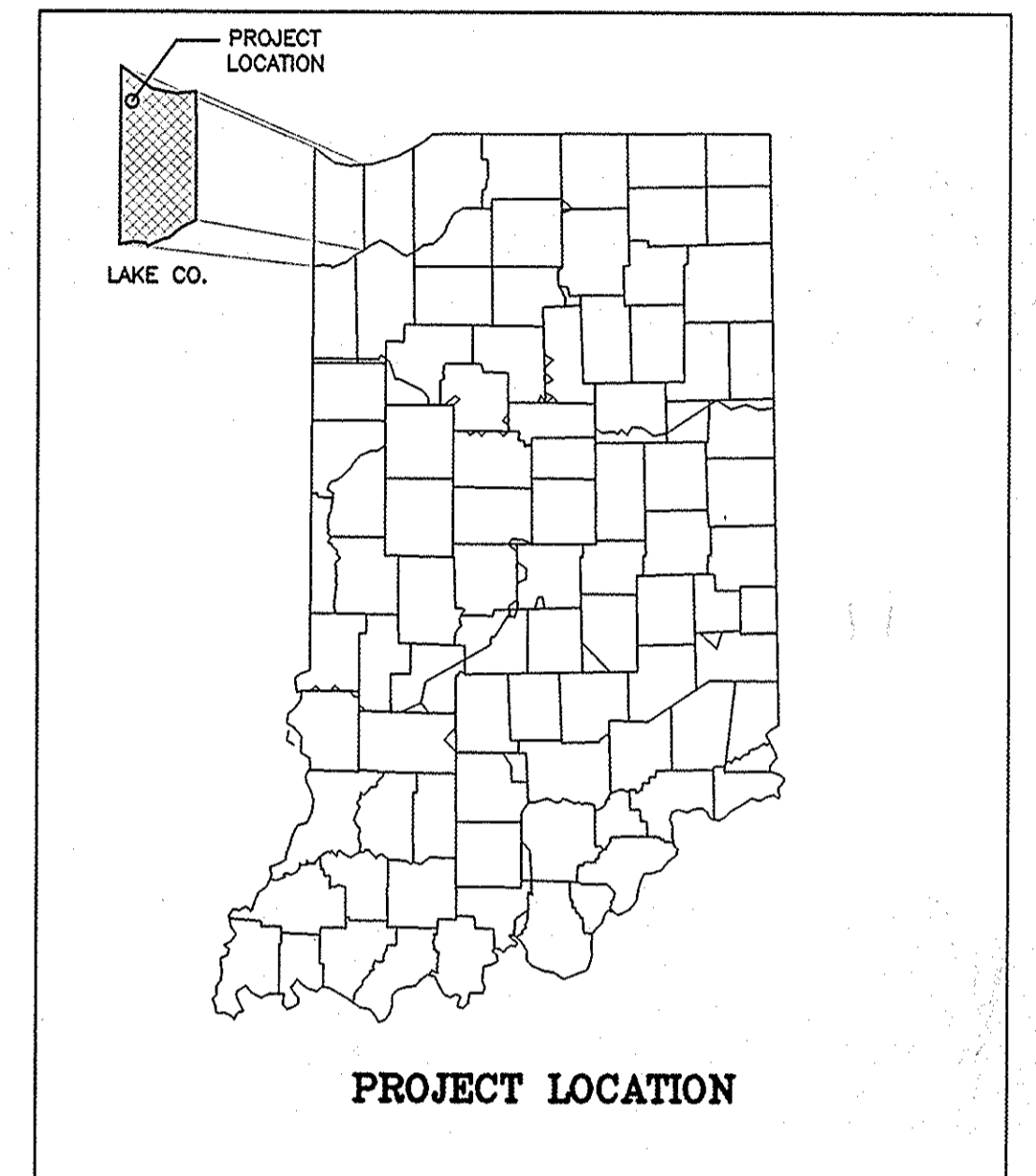
PROJECT	DESIGNATION
BR/N881 (007)	9800480
CONTRACT	BRIDGE FILE
B-25411	152-45-1031F

INDEX				
STRUCTURE	TYPE	SPAN AND SKEW	OVER	STATION
152-45-1031F	STEEL TRUSS & PRESTR. CONC. I-BEAM	SPANS A THRU L SKEW 19'25" RIGHT	CONRAIL & INDIANA HARBOR BELT RAILROAD (GIBSON YARD)	
SHEET NO.	SUBJECT			
1	TITLE SHEET			
2-3	DETOUR ROUTE AND MAINTENANCE OF TRAFFIC			
4	FRAMING PLAN			
5	REPAIR DETAILS			
6	END FLOOR BEAM FB-1 SPANS A-D, E-G, H & K			
7	END FLOOR BEAM FB-7 SPANS A & K			
8	BRIDGE SUMMARY			

INDIANA
DEPARTMENT OF
TRANSPORTATION

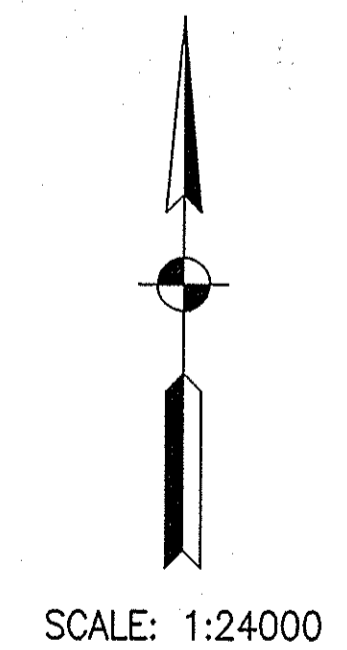
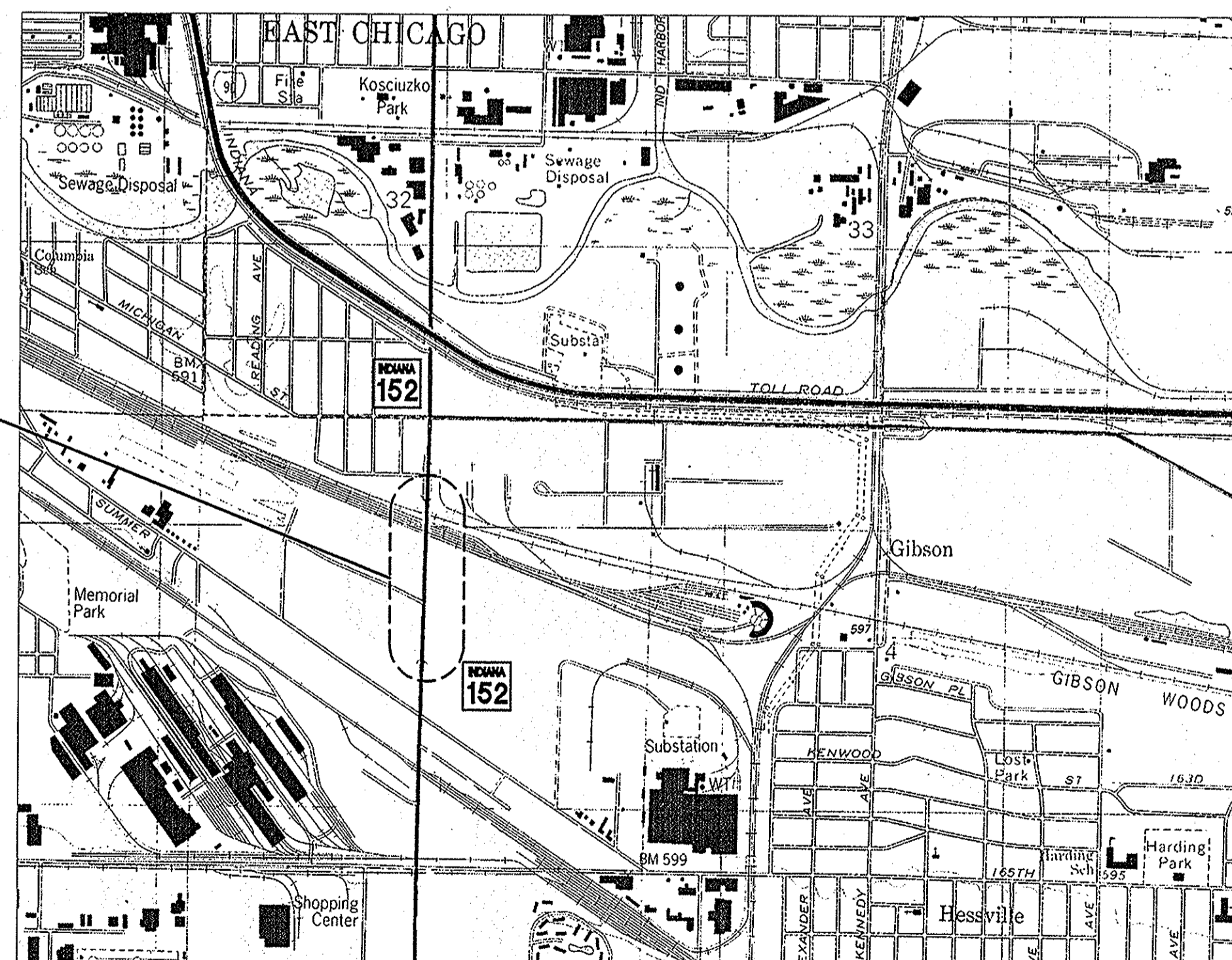
BRIDGE PLANS
FOR SPANS OVER 20 FEET
ON
S.R. 152
OVER CONRAIL & IHB RAILROAD
PROJECT NO. ST/9999 (103) P.E.
BR/N881 (007) R/W CONST.
UTIL.
REFERENCE PT.: 2 + 18

TRAFFIC DATA	
A.A.D.T. 2000	V.P.D.
A.A.D.T.	V.P.D.
D.H.V.	%
DIRECTIONAL DISTRIBUTION	%
TRUCKS	% D.H.V.
ESAL	% A.A.D.T.
DESIGN DATA	
DESIGN SPEED	35 M.P.H.
PROJECT DESIGN CRITERIA	
FUNCTIONAL CLASSIFICATION	
RURAL/URBAN	URBAN
TERRAIN	LEVEL
ACCESS CONTROL	NONE



PROJECT LENGTH	
BRIDGE LENGTH :	0.34 MI.
ROADWAY LENGTH :	0.34 MI.
TOTAL LENGTH :	0.34 MI.
MAX GRADE :	5.0 %

END FLOOR BEAM STRENGTHENING AND CONNECTION PLATE REPLACEMENT TO STRUCTURE 152-45-1031E ON S.R. 152 OVER CONRAIL & IHB RAILROAD, APPROX. 84 FT. NORTH OF & PAVEMENT SUMMER ST. AND EXTENDING NORTH APPROX. 3375 FT., ALL IN LAKE COUNTY



BRIDGE REHABILITATION TO
STR. 152-45-1031E

APPROX. 2 MI TO I-80
LAKE COUNTY

JSE
JANSSEN & SPAANS ENGINEERING
9155 HARRISON PARK COURT
INDIANAPOLIS, INDIANA 46216
Business (317) 254-9686 Fax (317) 259-8262

INDIANA DEPARTMENT OF TRANSPORTATION
STANDARD SPECIFICATIONS DATED 1999
TO BE USED WITH THESE PLANS

REVISIONS	
DATE	SHEET NO.

FEDERAL HIGHWAY ADMINISTRATION
U.S. DEPT. OF TRANSPORTATION
APPROVED: _____
DATE _____
DIVISION ADMINISTRATOR

PLANS PREPARED BY: JANSSEN & SPAANS ENGINEERING, INC. (317) 254-9686 PHONE NUMBER
CERTIFIED BY: *John C. Mauser* 11/8/00 DATE
JOHN C. MAUSER, P.E.
APPROVED FOR LETTING: *Robert H. Kiska* 12/13/2000 DATE
CHIEF, DIVISION OF DESIGN

JOHN C. MAUSER
REGISTERED
No. 17361
STATE OF
INDIANA
PROFESSIONAL ENGINEER

BRIDGE FILE	152-45-1031F
DESIGNATION	9800480
SHEETS	1 of 8
CONTRACT	B-25411
PROJECT	BR/N881 (007)

B-25411

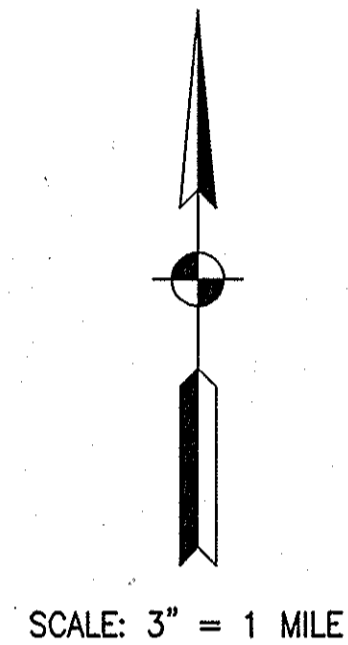
Time: 8:364 Date: 11/8/2000 Code: 1 (M/S) Drawing File: C:\drive\h001-rhb\372\000\152-45-1031F.dwg (S:\Bengocoo)



KEY PLAN

TRAFFIC MAINTENANCE SUMMARY TABLE						
LEGEND	DESCRIPTION	DESIGNATION	SIZE	TYPE	QUANTITY	
②	DETOUR AHEAD	XW20-2	48" X 48"	A	3	
①	ROAD CLOSED AHEAD	XW20-3	48" X 48"	A	9	
⑬	ROAD CLOSED 500 FT.	XW20-3	48" X 48"	A	4	
⑭	ROAD CLOSED 1000 FT.	XW20-3	48" X 48"	A	2	
④-⑧ ⑪⑬⑮ ⑫⑭⑯	DETOUR ROUTE MARKER ASSEMBLY	-	-	-	35	
③⑨⑩⑯	ROAD CLOSURE SIGN ASSEMBLY	-	-	-	5	
⑰	PROGRAMMABLE MESSAGE BOARD	-	-	-	3	
⑱	SIDEWALK CLOSED	SPL-1	48" X 48"	A	2	
TOTALS						
CONSTRUCTION SIGN, A					20	
TYPE III-A BARRICADES					8	

SEE US20/SR912 INTERCHANGE DETAIL



CONSTRUCTION DETOUR SIGNS

INTERSTATE

- ④① XM4-8
- NORTH M3-1-C(I)
- INDIANA 152 M1-I6a-A
- M6-3-A(I)

CONFIRMING DETOUR ROUTE MARKER ASSEMBLY

- ⑤① XM4-8
- SOUTH M3-3-C(I)
- INDIANA 152 M1-I6a-A
- M6-3-A(I)

CONFIRMING DETOUR ROUTE MARKER ASSEMBLY

- ⑥① XM4-8
- INDIANA 152 M1-I6a-A
- M5-1-A(R)(I)

ADVANCE TURN DETOUR ROUTE MARKER ASSEMBLY

- ⑦① XM4-8
- INDIANA 152 M1-I6a-A
- M6-1-A(I)

DIRECTIONAL DETOUR ROUTE MARKER ASSEMBLY

PROGRAMMABLE MESSAGE BOARD AS FOLLOWS:

- ⑰① DETOUR S.R. 152 NORTH - FOLLOW S.R. 912 NORTH AND U.S. 20 WEST

NON-INTERSTATE

- ① XW20-3 ROAD CLOSED AHEAD (48" x 48")

- ② XW20-2 DETOUR AHEAD (48" x 48")

- ③ ROAD CLOSED MILES AHEAD LOCAL TRAFFIC ONLY R11-3

- ⑩ ROAD CLOSED R11-2

- ④ XM4-8
- NORTH M3-1S
- INDIANA 152 M1-6
- M6-3S

- ⑤ XM4-8
- SOUTH M3-3S
- INDIANA 152 M1-6
- M6-3S

- ⑥ XM4-8
- INDIANA 152 M1-6
- M5-1(R)S

- ⑦ XM4-8
- INDIANA 152 M1-6
- M6-1S

- ⑧ XM4-8
- INDIANA 152 M1-6
- M6-1S

- ⑨ ROAD CLOSED MILES AHEAD LOCAL TRAFFIC ONLY R11-3

- ⑪ ROAD CLOSED R11-3

- ⑫ ROAD CLOSED 500 FT (48" x 48")

- ⑬ ROAD CLOSED 1000 FT (48" x 48")

- ⑭ XM4-8
- INDIANA 152 M1-6
- M5-1(L)S

- ⑮ END DETOUR ROUTE MARKER ASSEMBLY

- ⑯ ADVANCE TURN DETOUR ROUTE MARKER ASSEMBLY

- ⑰ END DETOUR ROUTE MARKER ASSEMBLY

- ⑱ SIDEWALK CLOSED (48" x 48")

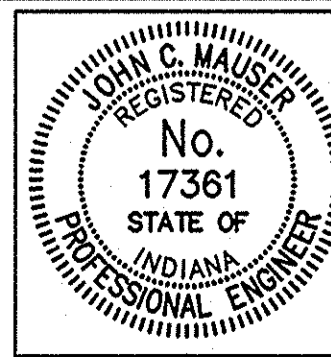
LEGEND

- LOW INTENSITY CONSTRUCTION WARNING LIGHT (TYPE "A").
- TYPE III-A BARRICADES
- ROAD CLOSURE SIGN ASSEMBLY

NOTES

REFER TO STANDARD DWG. 801-TCDT-01 AND 801-TCDT-03 FOR ADVANCE SIGN PLACEMENT AND GENERAL NOTES.
SEE STD DWG 801-TCDV-06 AND 801-TCDV-07 FOR TYPE III BARRICADE APPLICATION.
ACCESS TO PRIVATE DRIVES AND PUBLIC ROADS SHALL BE KEPT OPEN AT ALL TIMES (UNLESS NOTED OTHERWISE)
SEE SHEET 3 FOR ENLARGED MAINTENANCE OF TRAFFIC DETAIL PLANS.

Date: 8/6/2009
 Scale: 1"=1/2" (FS)
 Drawing File: K:\Data\INDOT-RHB\372\Draw\372-02A.dwg (S:\Bengachon)

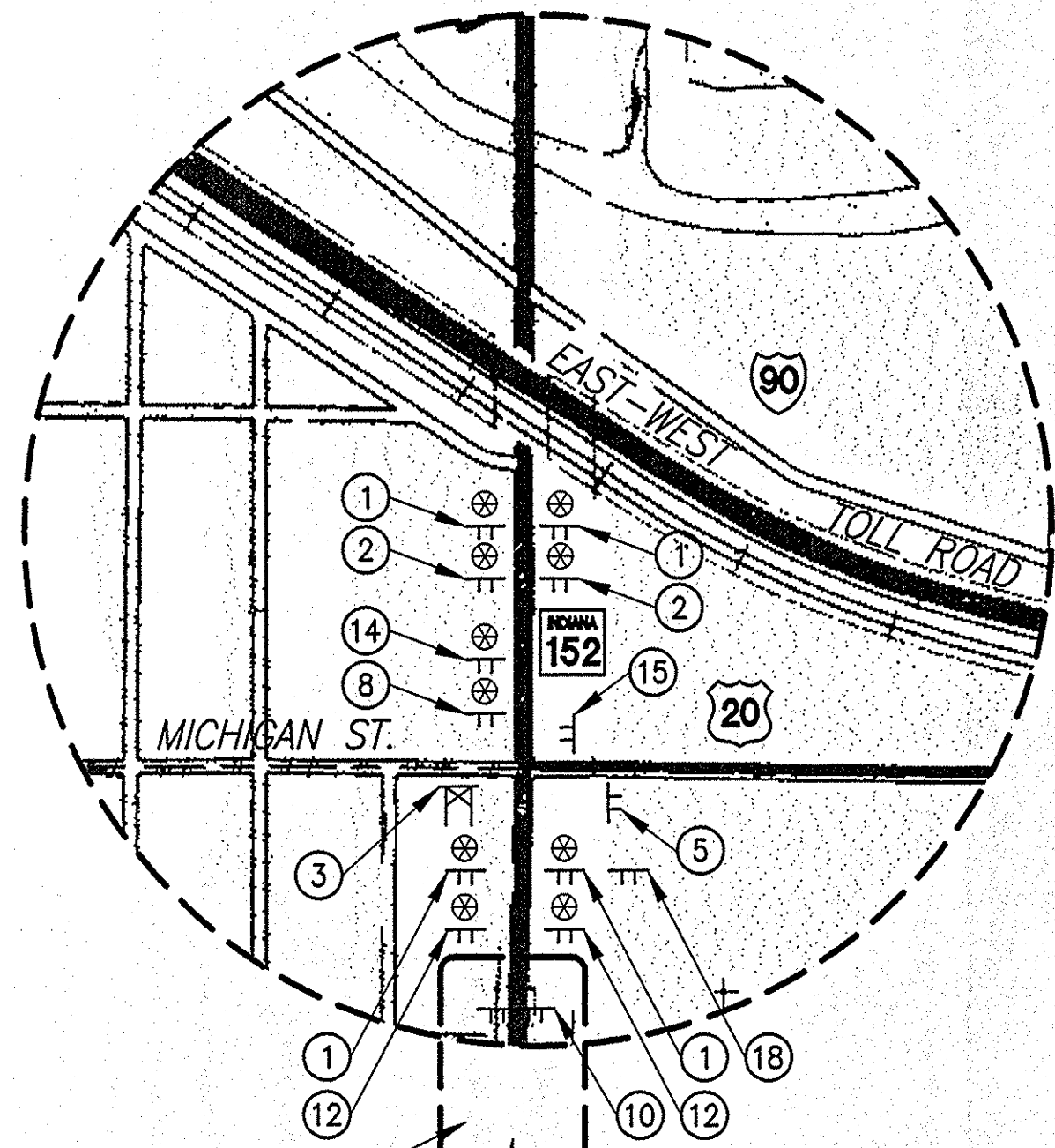


RECOMMENDED FOR APPROVAL: *John C. Mauser* 8/12/09
 DESIGN ENGINEER DATE

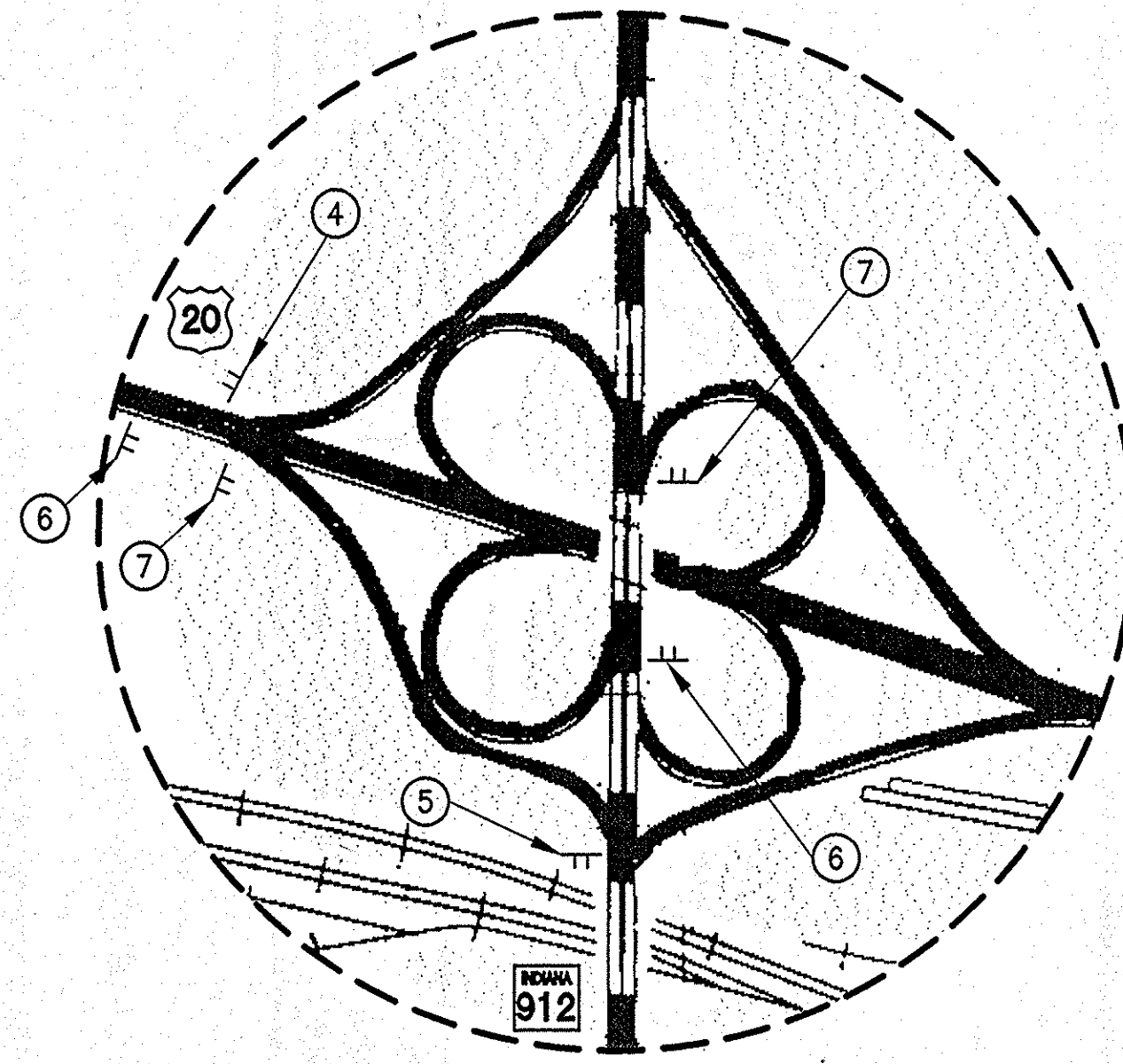
DESIGNED: STB DRAWN: STB
 CHECKED: AEO CHECKED: JCM

INDIANA DEPARTMENT OF TRANSPORTATION
 DETOUR

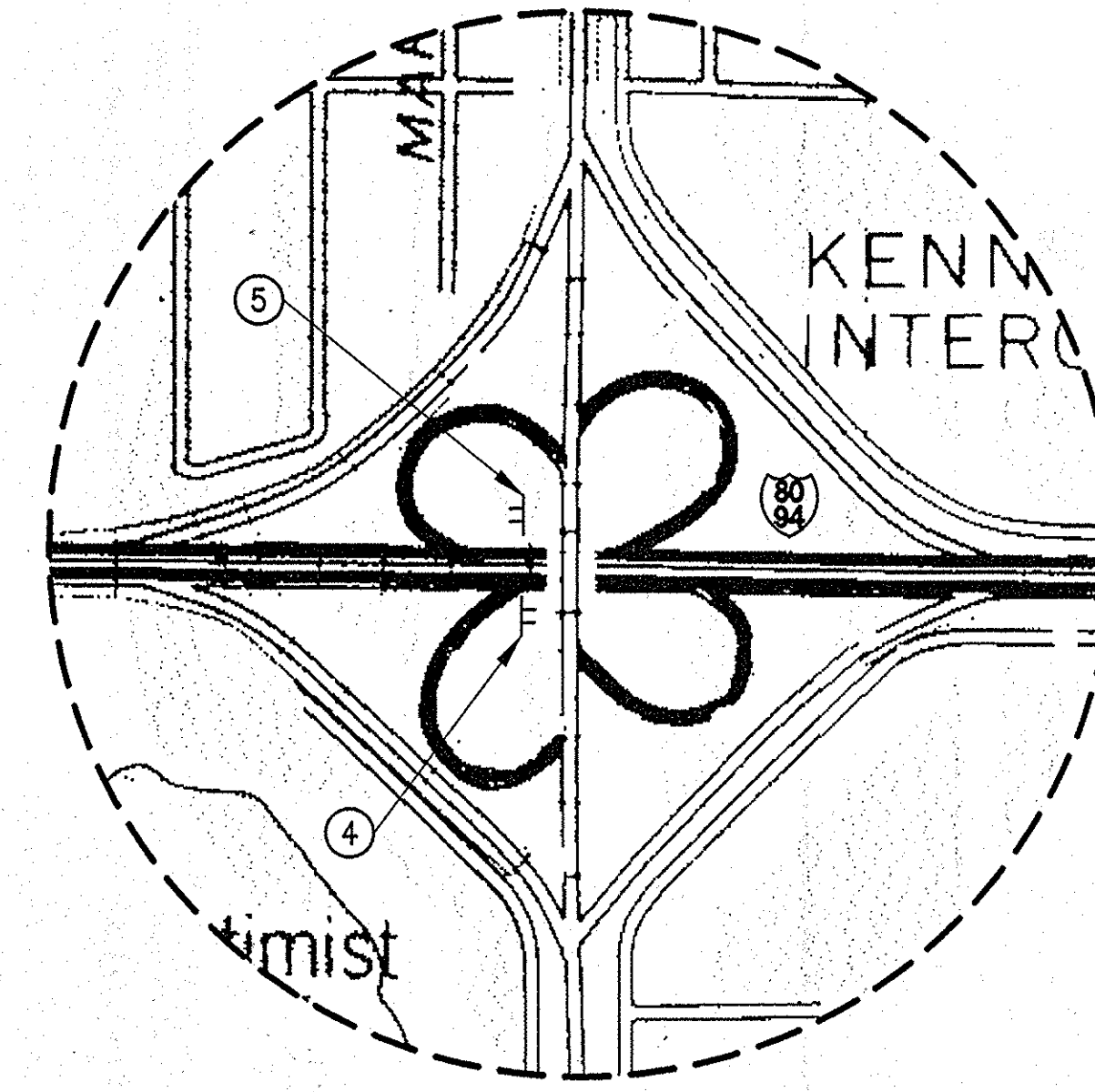
HORIZONTAL SCALE	BRIDGE FILE
AS NOTED	152-45-1031F
VERTICAL SCALE	DESIGNATION
	9800480
SURVEY BOOK	SHEETS
	2 of 8
CONTRACT	PROJECT
B-25411	BR/N881 (007)



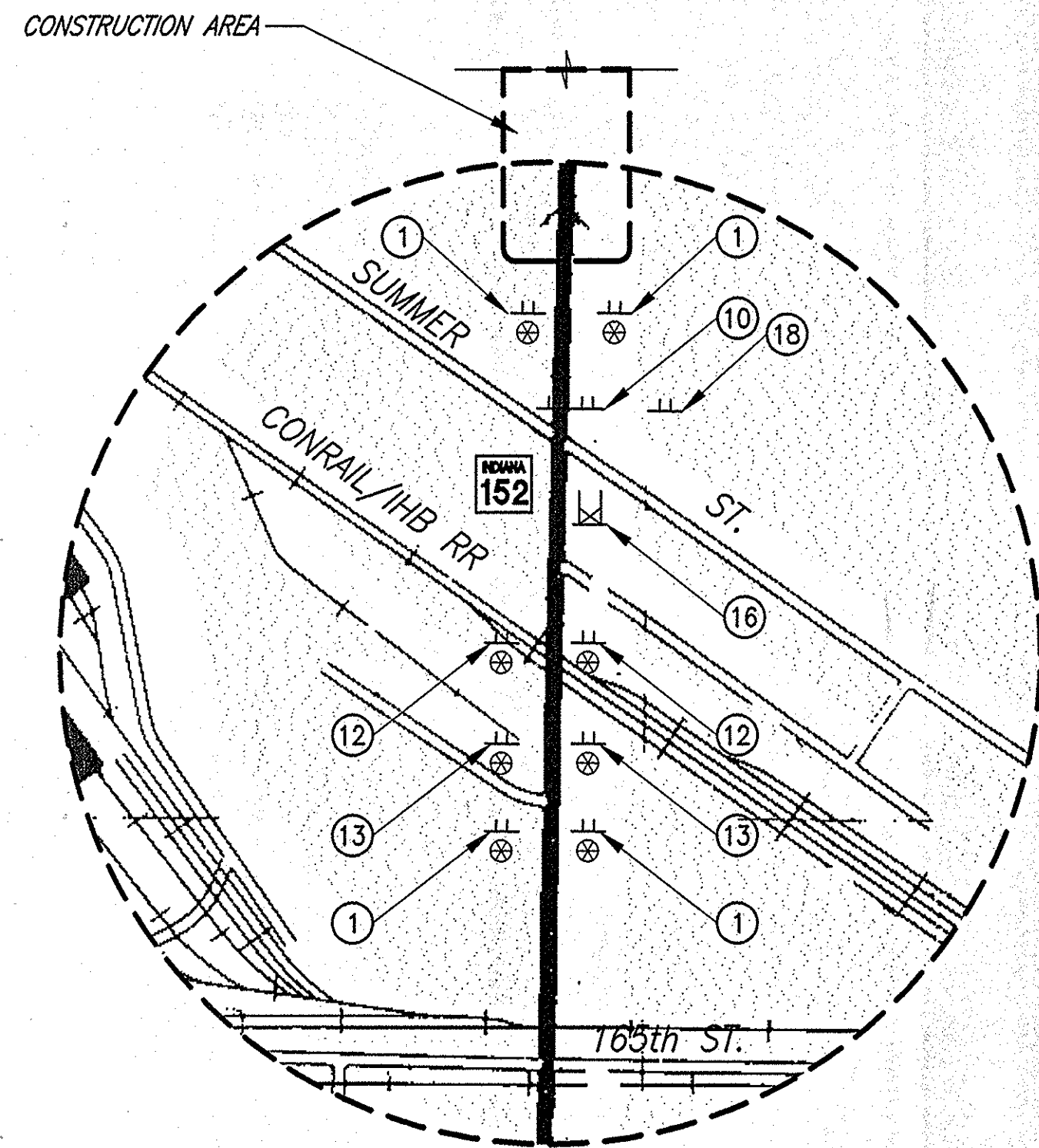
CONSTRUCTION AREA
US20/SR152
INTERSECTION DETAIL
 NO SCALE



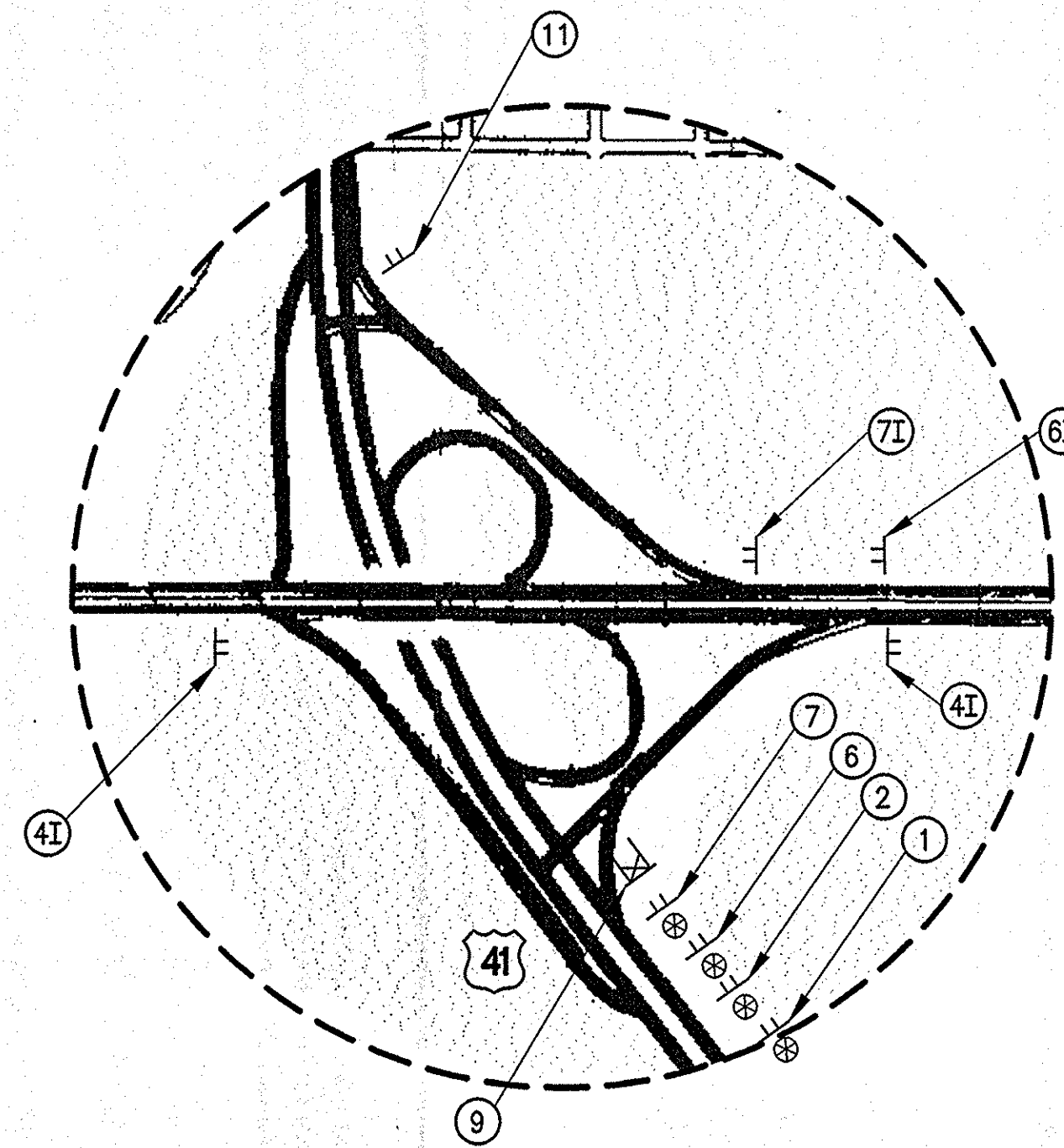
US20/SR912
INTERCHANGE DETAIL
 NO SCALE



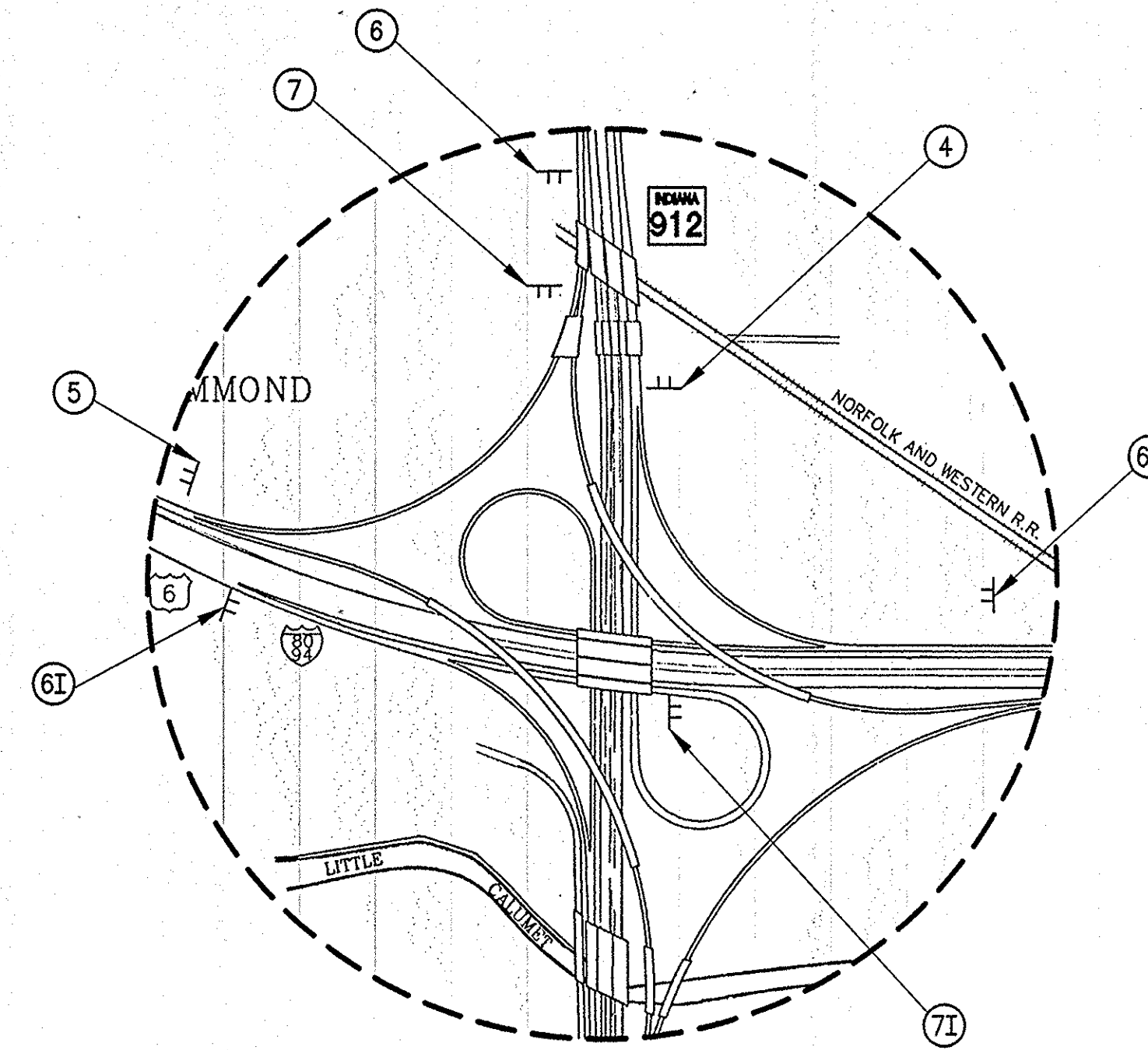
KENNEDY AVE.
INTERCHANGE DETAIL
 NO SCALE



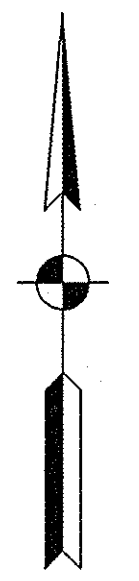
CONSTRUCTION AREA
SR152/SUMMER ST.
INTERSECTION DETAIL
 NO SCALE



INDIANAPOLIS BLVD.
INTERCHANGE DETAIL
 NO SCALE

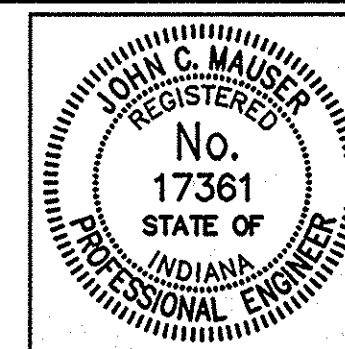


CLINE AVE.
INTERCHANGE DETAIL
 NO SCALE



NOTE:
 SEE SHEET 2 FOR MAINTENANCE OF TRAFFIC
 LEGEND AND KEY PLAN.

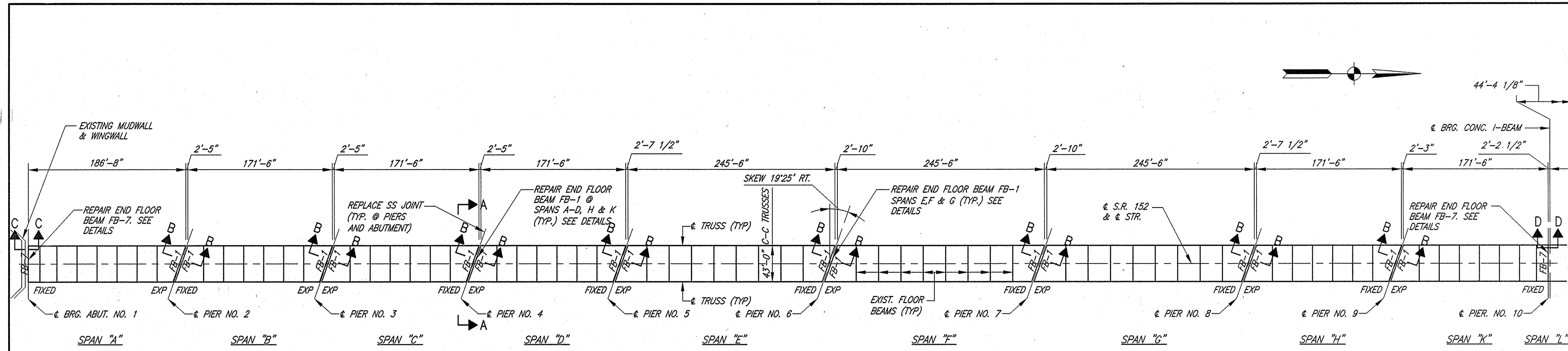
Time: 13:37:11
 Date: 11/21/2000
 Drawing File: C:\Draw\INDOT-888\372\DWG\372-02B.dwg (Stampsheet)



RECOMMENDED FOR APPROVAL *John C. Mauser* 11/21/00
 DESIGN ENGINEER DATE
 DESIGNED: STB DRAWN: STB
 CHECKED: AEO CHECKED: JCM

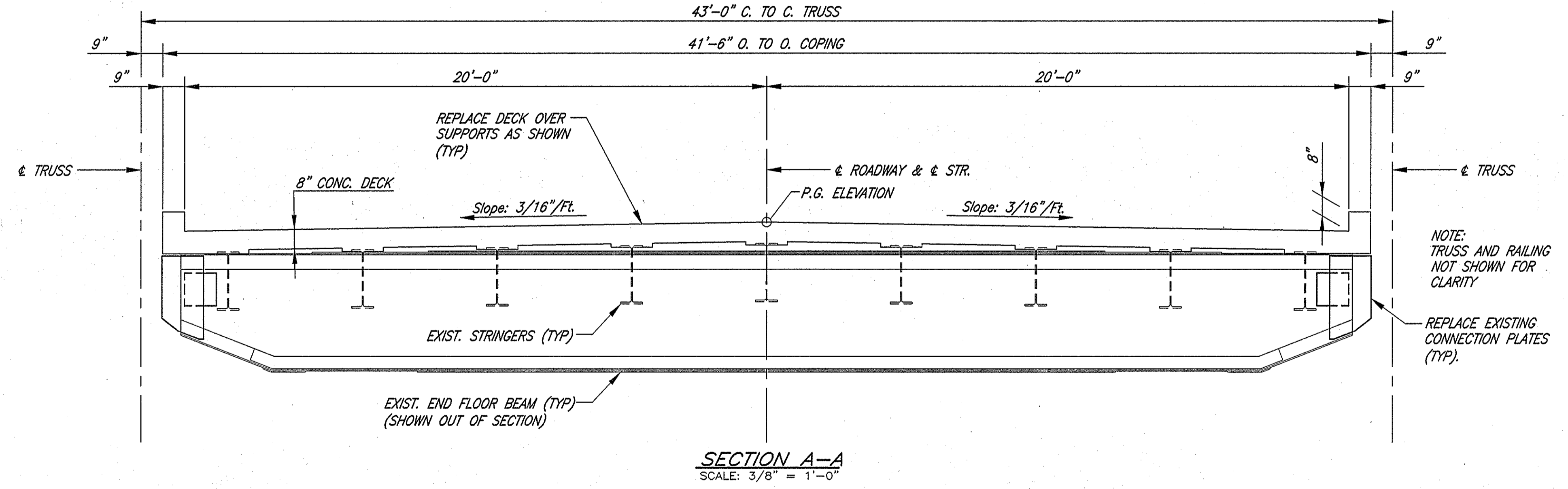
INDIANA
 DEPARTMENT OF TRANSPORTATION
 DETOUR

HORIZONTAL SCALE	BRIDGE FILE
AS NOTED	152-45-1031F
VERTICAL SCALE	DESIGNATION
	9800480
SURVEY BOOK	SHEETS
	3 of 8
CONTRACT	PROJECT
B-25411	BR/N881 (007)



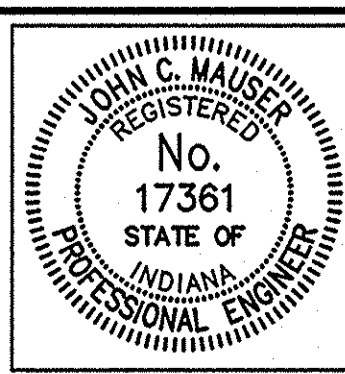
FRAMING PLAN
SCALE: 1" = 60'

NOTE:
IHB RAILROAD TRACKS ARE BENEATH SPAN "H"



- GENERAL NOTES:**
- FLOOR BEAMS SHALL BE COMPLETELY SUPPORTED AND ADEQUATELY BRACED PRIOR TO CONNECTION PLATE REMOVAL. SUPPORTS AND BRACING SHALL NOT BE REMOVED UNTIL ALL FINAL BOLTING IS COMPLETED.
 - NO WELDING SHALL BE PERFORMED ON THE STEEL FLOOR BEAMS. ALL CONNECTIONS WILL BE MADE BY BOLTING AS SHOWN IN THE DETAILS.
 - ALL BOLTS TO BE 7/8" ASTM A325. ALL NEW REINFORCING STEEL SHALL BE EPOXY COATED.
 - PLANS FOR THE EXISTING STRUCTURE ARE ON FILE IN THE BRIDGE DEPARTMENT OF THE INDIANA DEPARTMENT OF TRANSPORTATION AS BRIDGE FILE 152-K-1031 AND ARE AVAILABLE UPON REQUEST.
 - EXISTING REINFORCING TO BE CLEANED & STRAIGHTENED AND USED IN NEW WORK AS SHOWN OR SPECIFIED.
 - EMBEDDED DOWEL BARS TO BE SET IN EPOXY GROUT PER MANUFACTURER'S RECOMMENDATIONS UNLESS OTHERWISE NOTED. PROVIDE MINIMUM PULLOUT VALUE OF 18.4 KIIPS FOR # 5 BAR.
 - ESTIMATED WEIGHT OF STRUCTURAL STEEL = 31,801 LBS. (INCLUDING BOLTS)
 - FOR SECTIONS B-B, C-C & D-D SEE SHEET 5.
- DESIGN DATA:**
- FLOOR BEAM REHABILITATION DESIGNED FOR 3 LANES OF HS-20-44 LOADING IN ACCORDANCE WITH 1996 AASHTO SPECIFICATIONS.
- REINFORCING STEEL COVER SHALL BE 2 1/2" IN TOP OF FLOOR SLAB AND 1" IN BOTTOM OF FLOOR SLAB.
- DESIGN STRESSES:**
- | | |
|---------------------------------|-------------------|
| CLASS C CONCRETE (SLAB) | $f'_c = 4000$ psi |
| REINFORCING STEEL (GR. 60) | $F_y = 60000$ psi |
| STRUCTURAL STEEL (EXISTING) | $F_y = 30000$ psi |
| STRUCTURAL STEEL (NEW) | $F_y = 36000$ psi |
| CLASS A CONCRETE (SUBSTRUCTURE) | $f'_c = 3500$ psi |

Date: 8/14/00
 Scale: 1/2"=10'(FS)
 Drawing File: K:\Draw\INDOT\BHE\372\DWG\372-03.dwg (Stingaphoe)



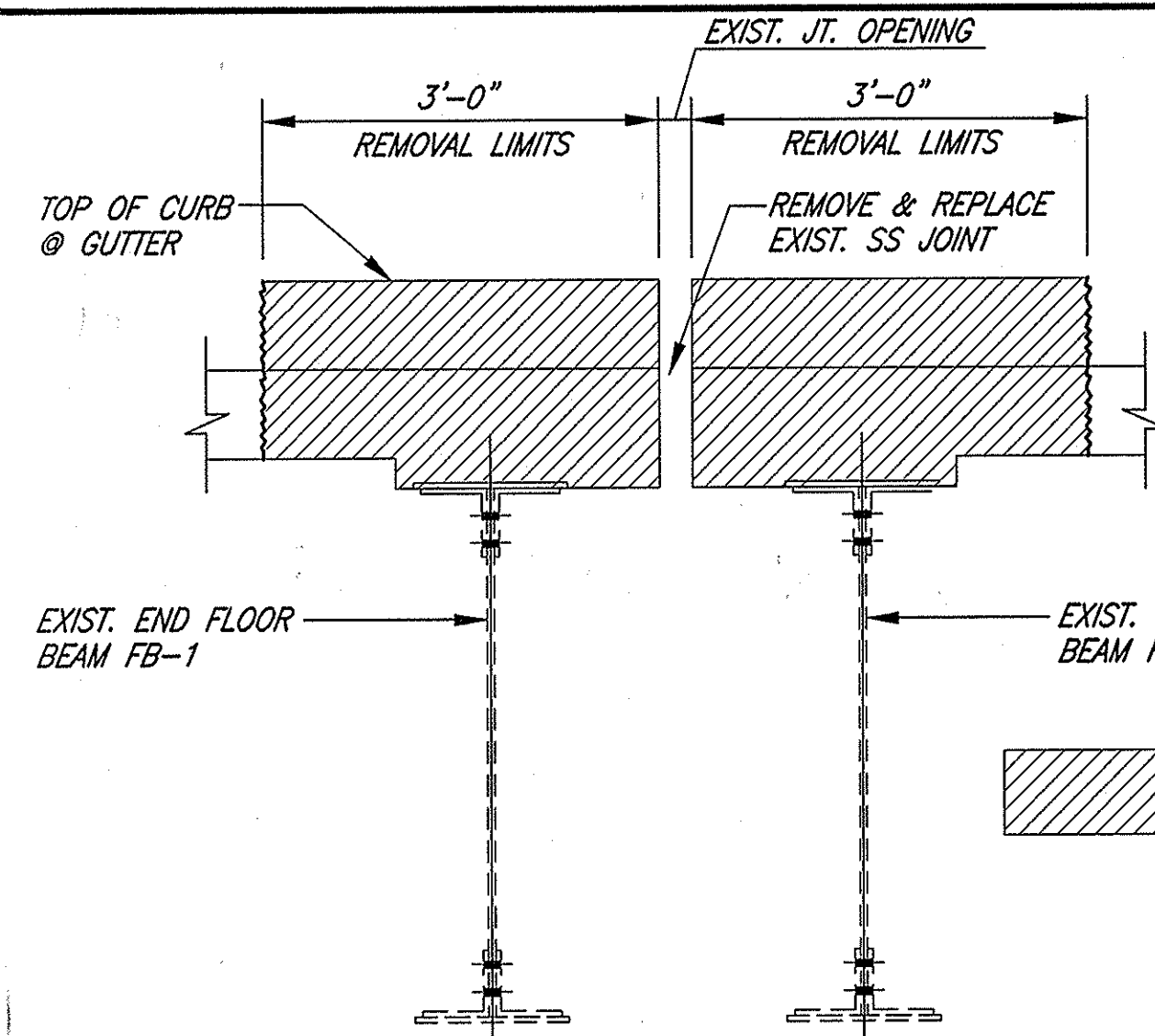
RECOMMENDED FOR APPROVAL: *John C. Mauser* 11/8/00
DESIGN ENGINEER DATE

DESIGNED: JCM DRAWN: STB
CHECKED: RJP CHECKED: JCM

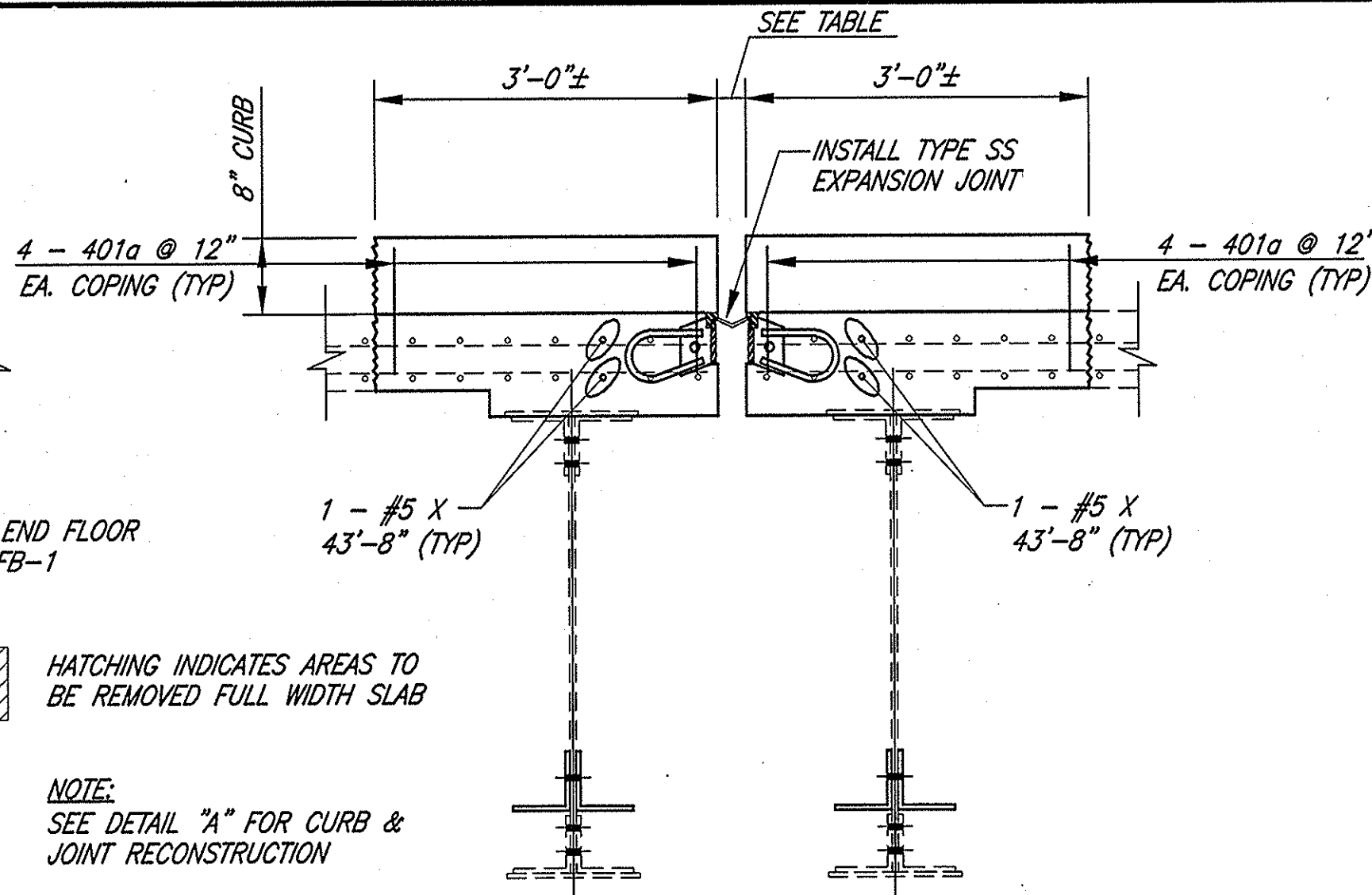
INDIANA DEPARTMENT OF TRANSPORTATION

FRAMING PLAN

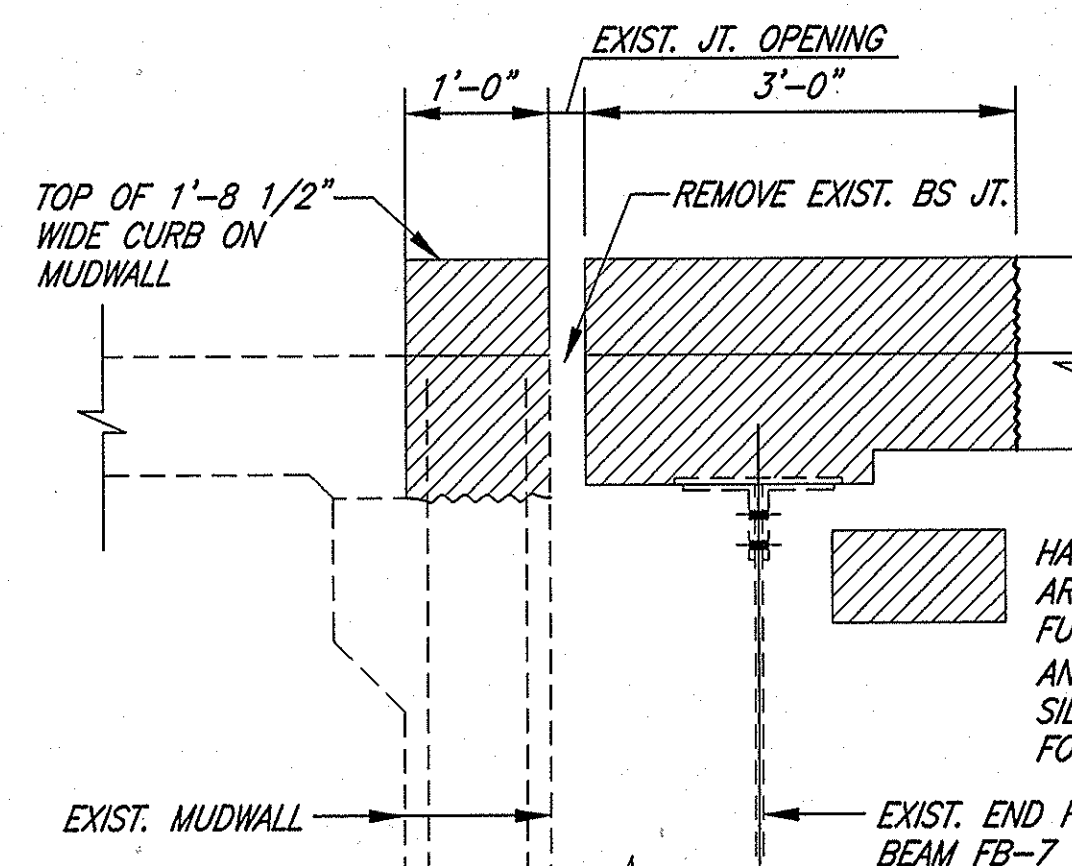
HORIZONTAL SCALE AS NOTED	BRIDGE FILE 152-45-1031F
VERTICAL SCALE	DESIGNATION 9800480
SURVEY BOOK	SHEETS 4 of 8
CONTRACT B-25411	PROJECT BR/N881 (007)



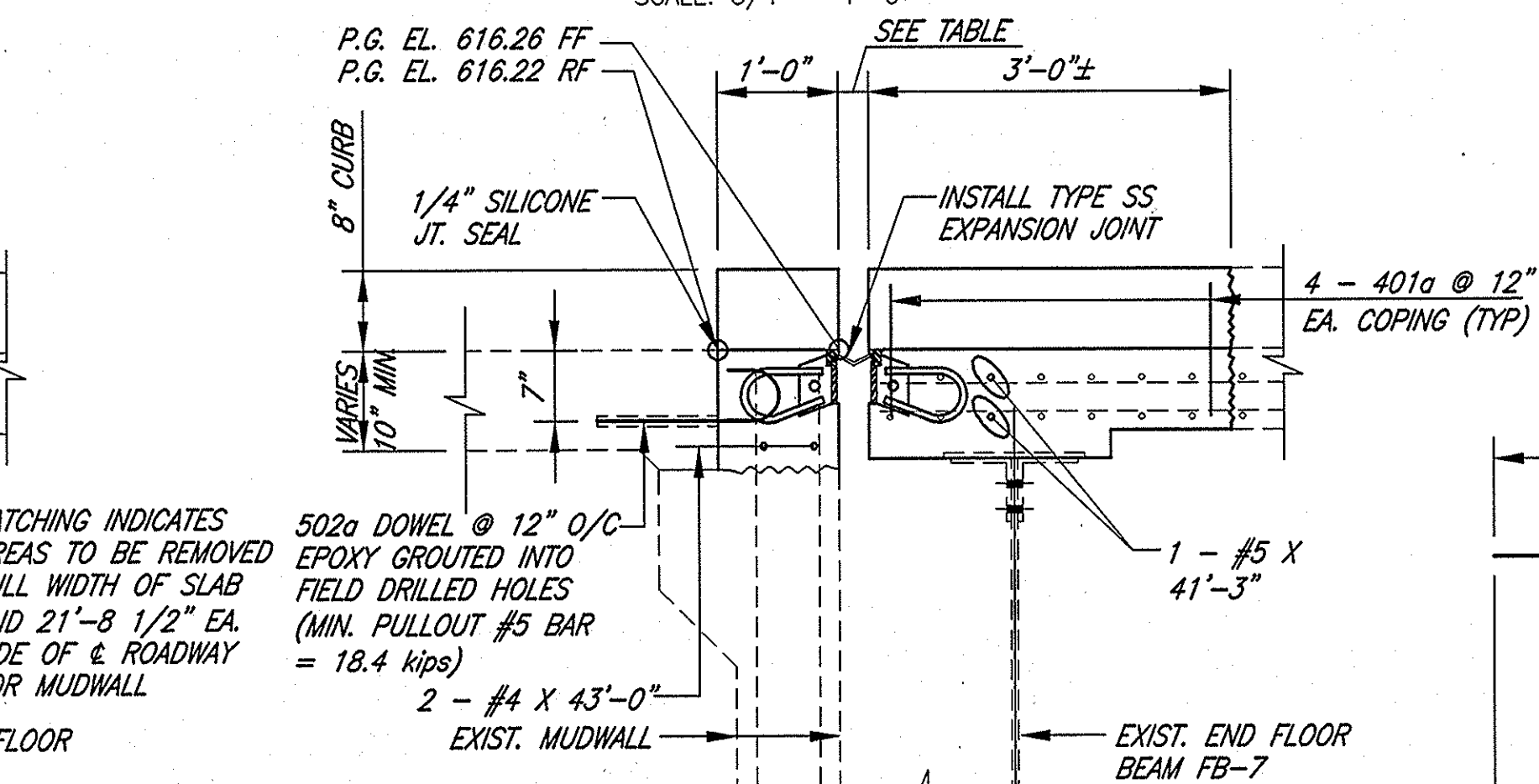
**SECTION B-B
REMOVAL @ PIERS NO. 2 THRU 9**
SCALE: 3/4"=1'-0"



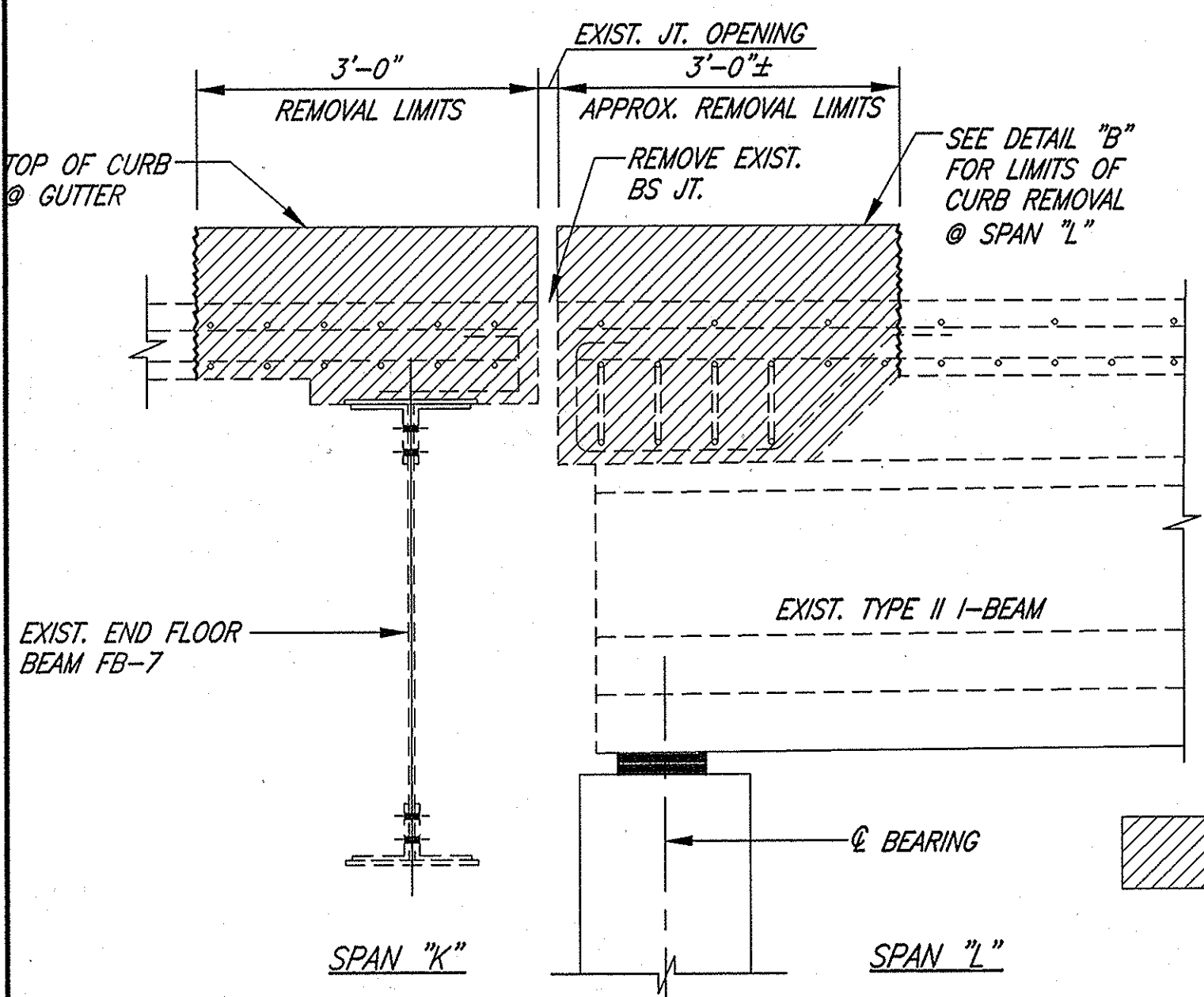
**SECTION B-B
RECONSTRUCTION @ PIERS NO. 2 THRU 9**
SCALE: 3/4"=1'-0"



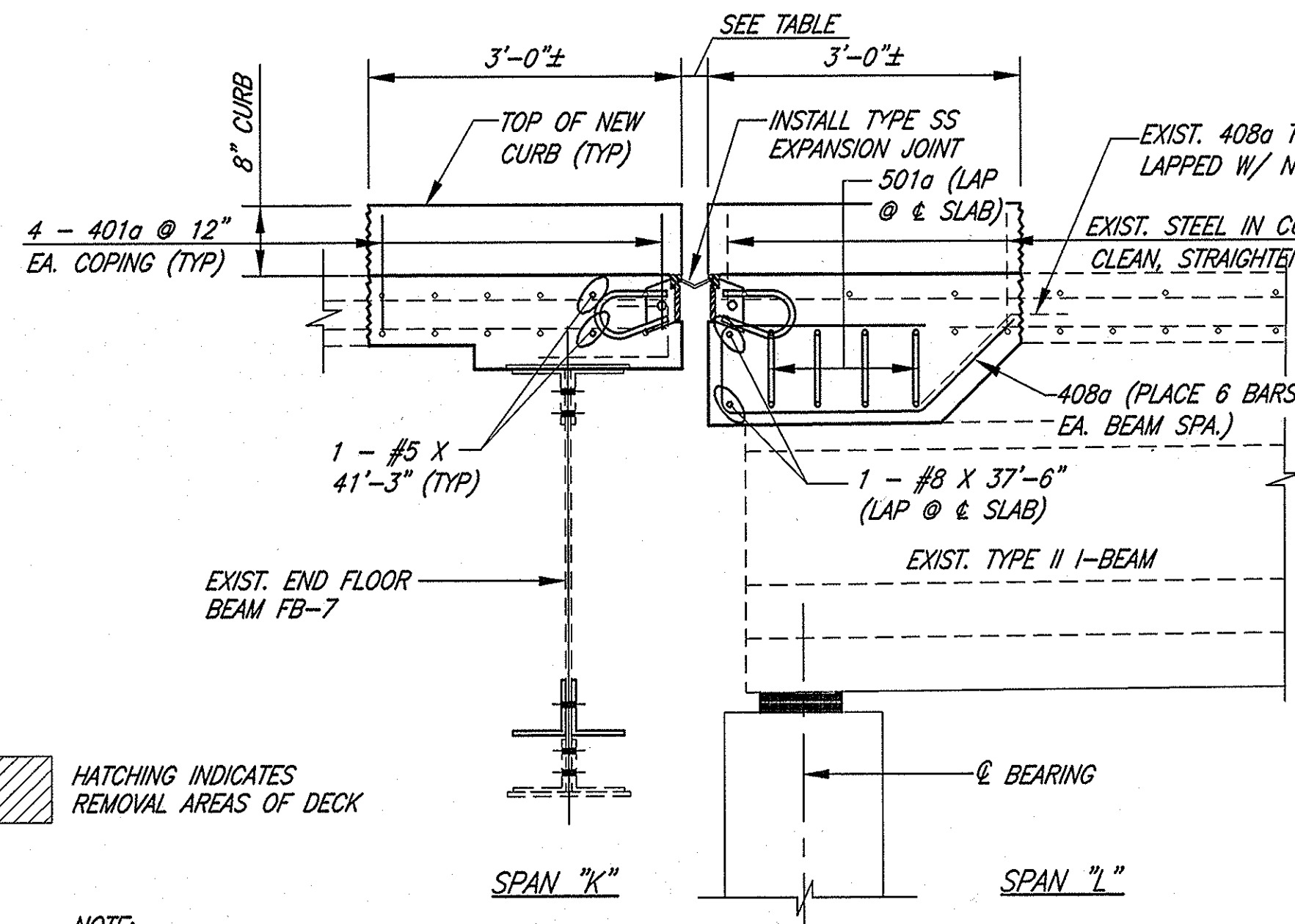
**SECTION C-C
REMOVAL @ END BENT NO. 1**
SCALE: 3/4"=1'-0"



**SECTION C-C
RECONSTRUCTION @ END BENT NO. 1**
SCALE: 3/4"=1'-0"



**SECTION D-D
REMOVAL @ PIER NO. 10**
SCALE: 3/4"=1'-0"



**SECTION D-D
RECONSTRUCTION @ PIER NO. 10**
SCALE: 3/4"=1'-0"

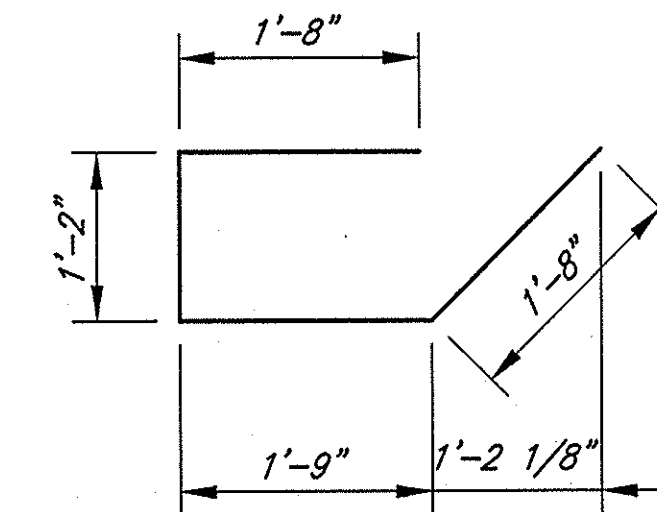
SS JOINT WIDTH TABLE

ABUTMENT OR PIER	EXP. LENGTH	JOINT WIDTH @ 60' F
ABUTMENT 1	-	3"
PIER 2, 4, 8 & 9	171'-6"	3"
PIER 3	345'-5"	2 1/4"
PIER 5, 6 & 7	245'-6"	2 5/8"
PIER 10	91'-7"	3"

BILL OF MATERIALS

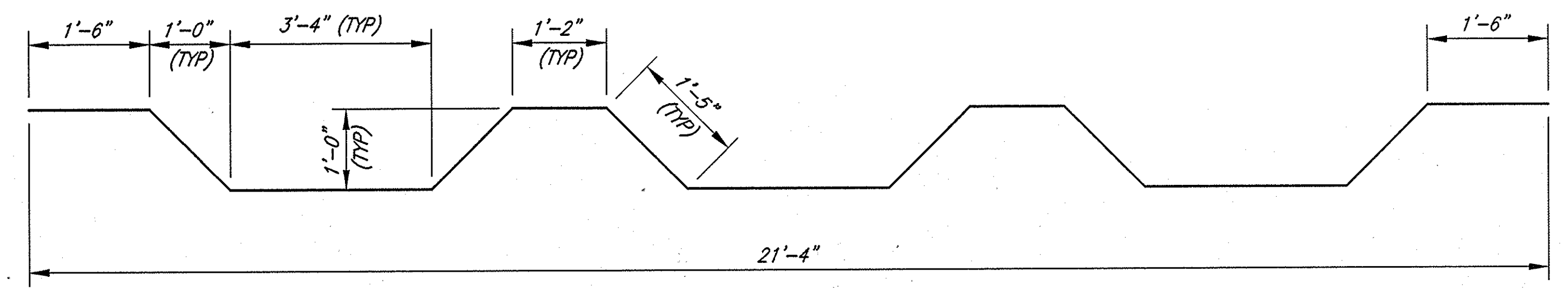
REINFORCING STEEL EPOXY COATED			
SIZE & MARK	NO. OF BARS	LENGTH	WEIGHT Lbs.
#8	2	37'-6"	
TOTAL #8			206
501a	8	23'-10"	
502a	42	2'-5"	
#5	32	43'-8"	
#5	4	41'-3"	
TOTAL #5			1909
401a	144	3'-2"	
408a	36	6'-3"	
#4	2	43'-0"	
TOTAL #4			512
TOTAL EPOXY COATED REINFORCING			2627
CONCRETE (CYS.)			
CLASS "C" IN SUPERSTRUCTURE			73.7
CLASS "A" IN SUBSTRUCTURE			1.6
MISCELLANEOUS (QTY.)			
FIELD DRILLED HOLES IN CONC.			44 EACH

401a X 3'-2"

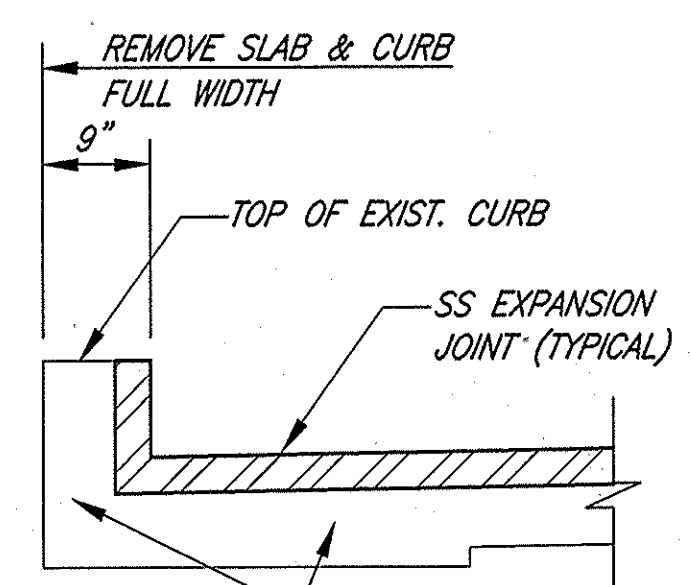


408a X 6'-3"

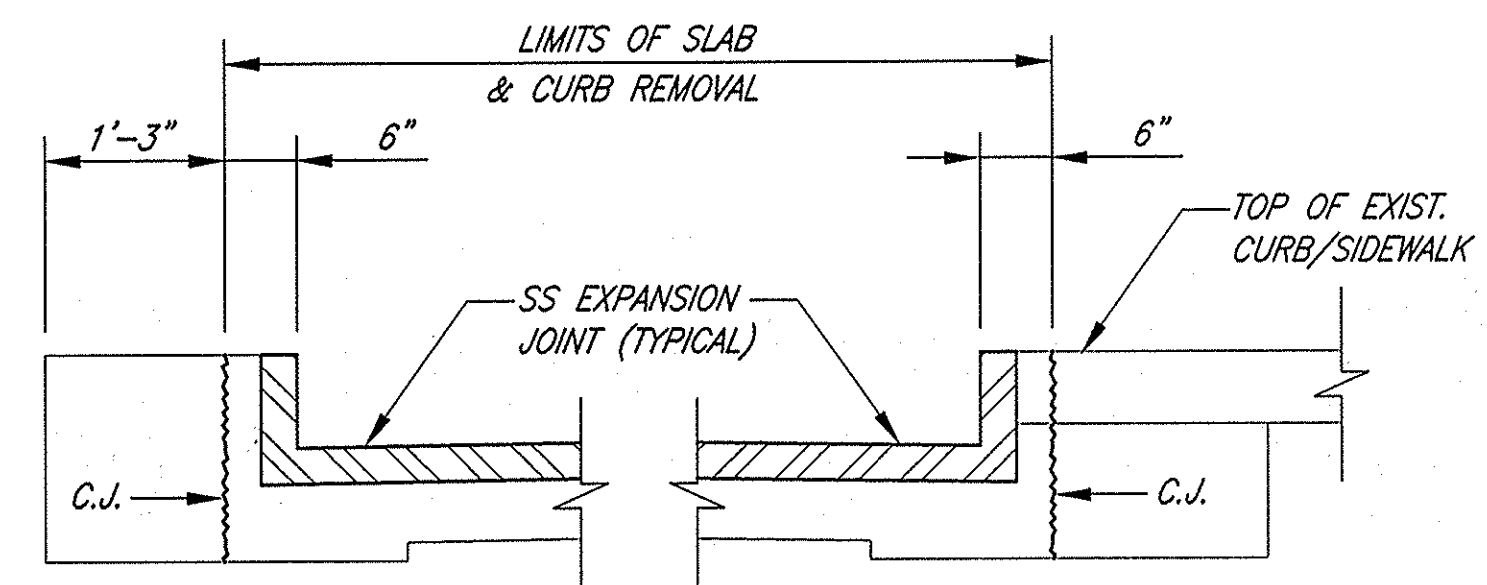
502a X 2'-5"



501a X 23'-10"



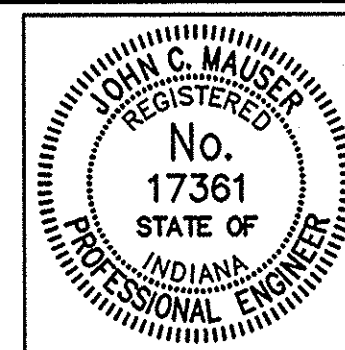
**DETAIL "A"
SS JOINT SPANS A THRU K**
SCALE: 3/4"=1'-0"



**DETAIL "B"
SS JOINT SPAN L**
SCALE: 3/4"=1'-0"

- NOTES:**
- FOR ADDITIONAL SS JOINT DETAILS, SEE BRIDGE STANDARD DRAWING NO. 724-BSSJ-01 THRU 09
 - FOR GENERAL NOTES SEE SHEET 4.
 - PROFILE GRADE ELEVATIONS SHOWN ARE TAKEN FROM THE OLD PLANS AND ARE FOR INFORMATION ONLY.
 - CONTRACTOR TO REMOVE AND REPLACE EXISTING RAILING AS REQ'D FOR CURB RECONSTRUCTION.

Time: 8:46:22
 Date: 11/8/00
 Drawing File: I:\Drive\INDOT\BIB\372\DWG\372-94.dwg (SBranscho)



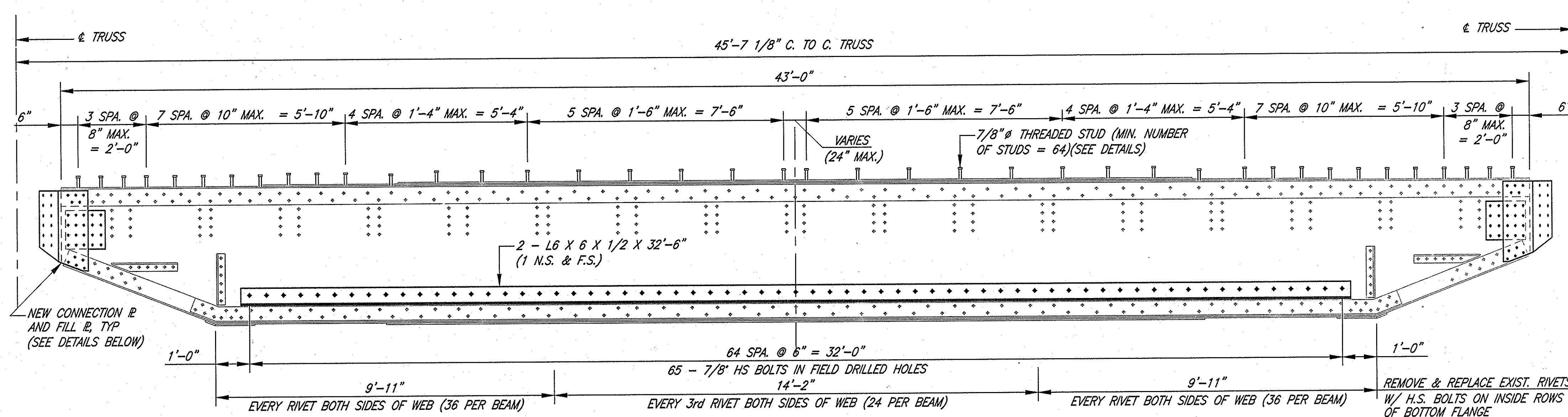
RECOMMENDED FOR APPROVAL: *John C. Mauer* 11/8/00
 DESIGN ENGINEER DATE

DESIGNED: JCM DRAWN: STB
 CHECKED: RJP CHECKED: JCM

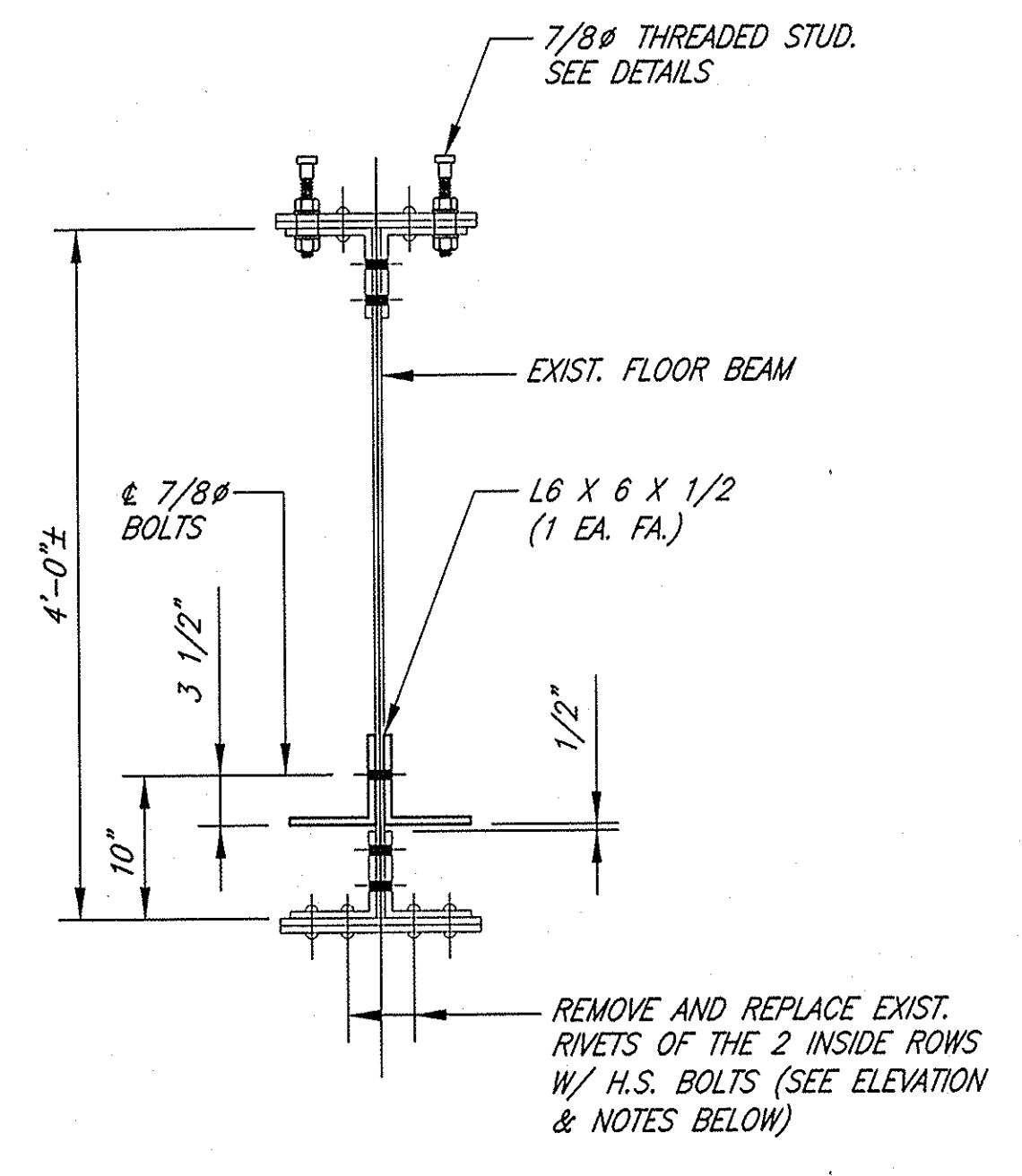
**INDIANA
DEPARTMENT OF TRANSPORTATION**

REPAIR DETAILS

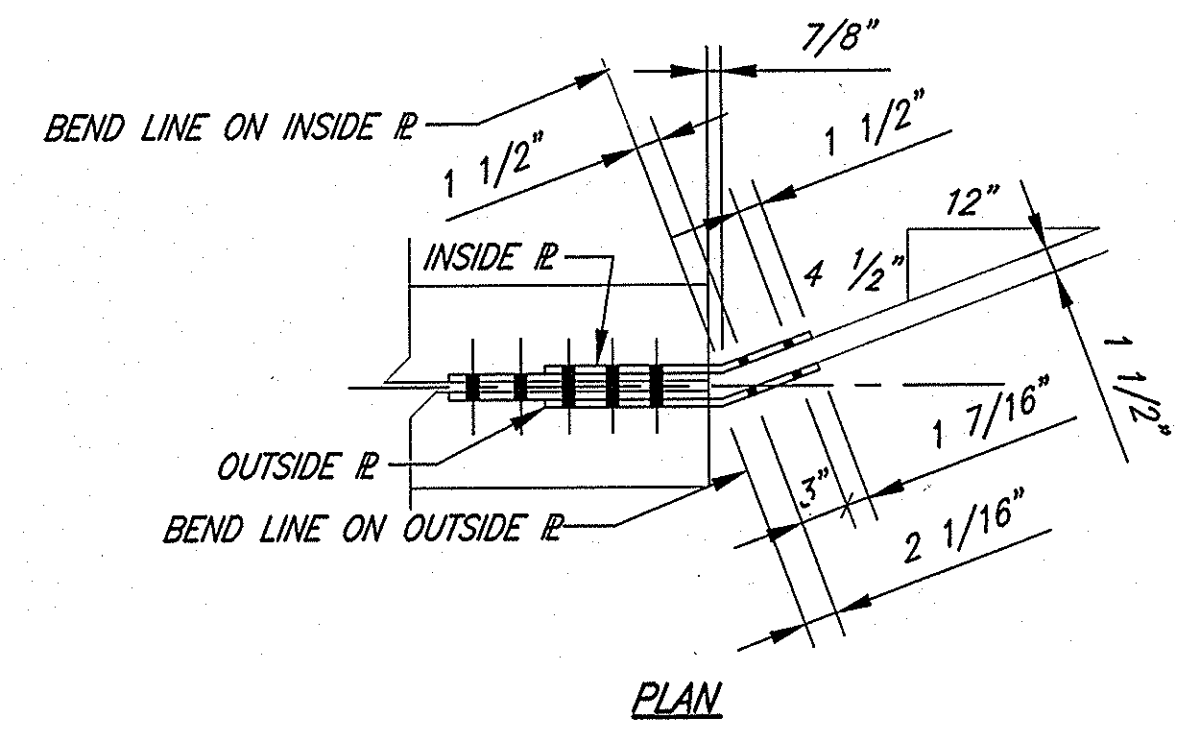
HORIZONTAL SCALE	BRIDGE FILE
AS NOTED	152-45-1031F
VERTICAL SCALE	DESIGNATION
	9800480
SURVEY BOOK	SHEETS
	5 of 8
CONTRACT	PROJECT
B-25411	BR/N881 (007)



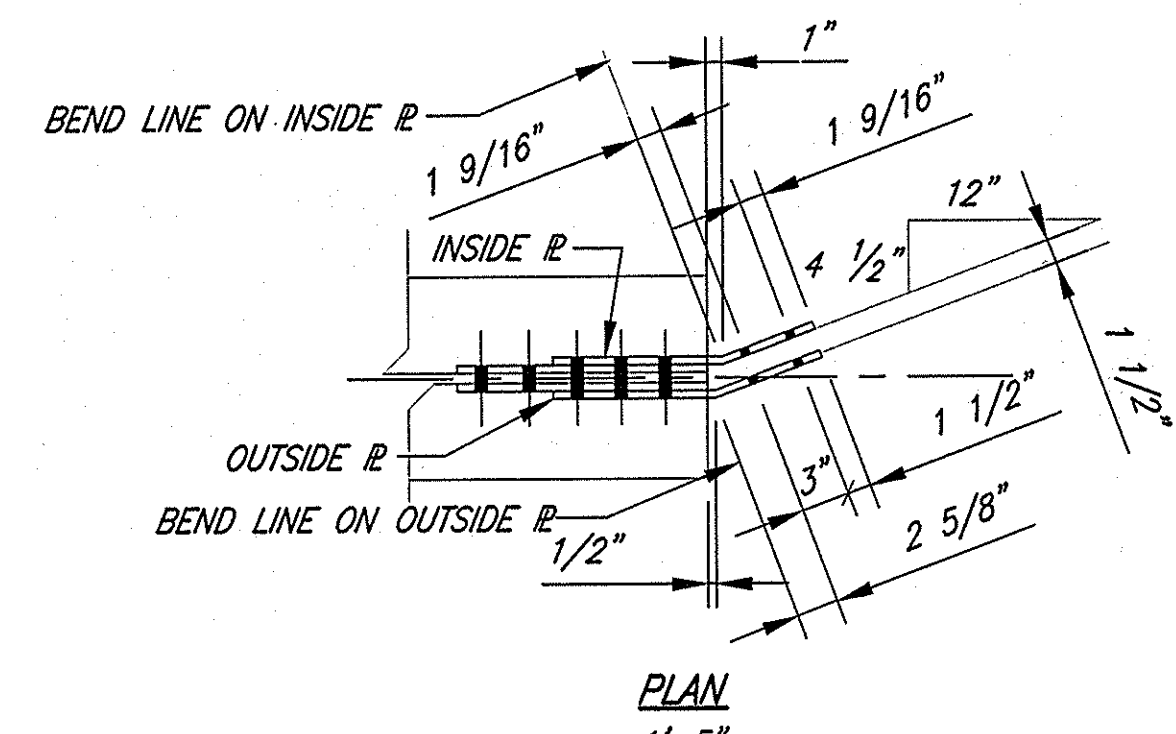
ELEVATION
TYPICAL SHEAR STUD LAYOUT BEAM FB-1
 SCALE: 1/2" = 1'-0"



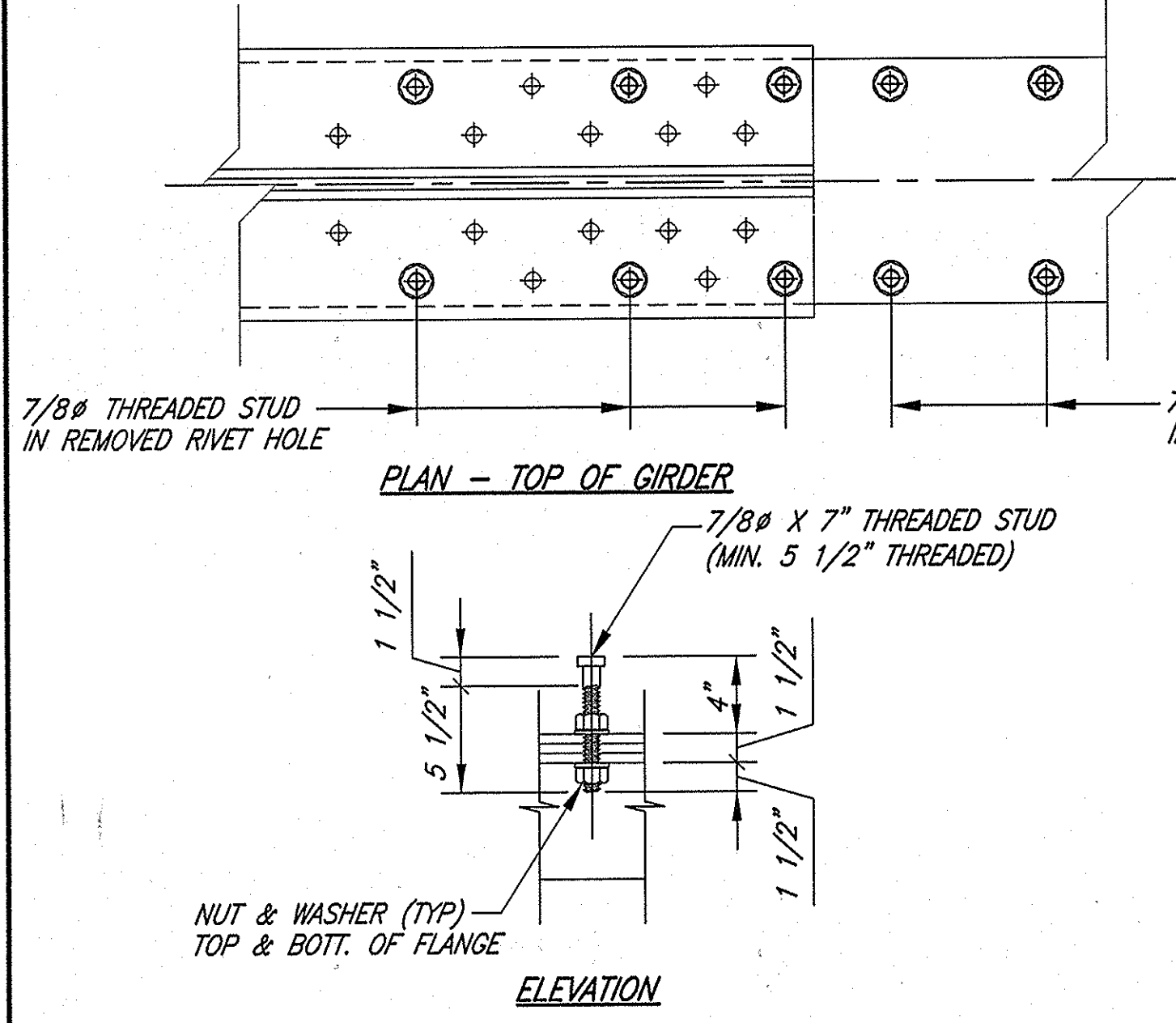
TYPICAL SECTION THRU FB-1
 SCALE: 1" = 1'-0"



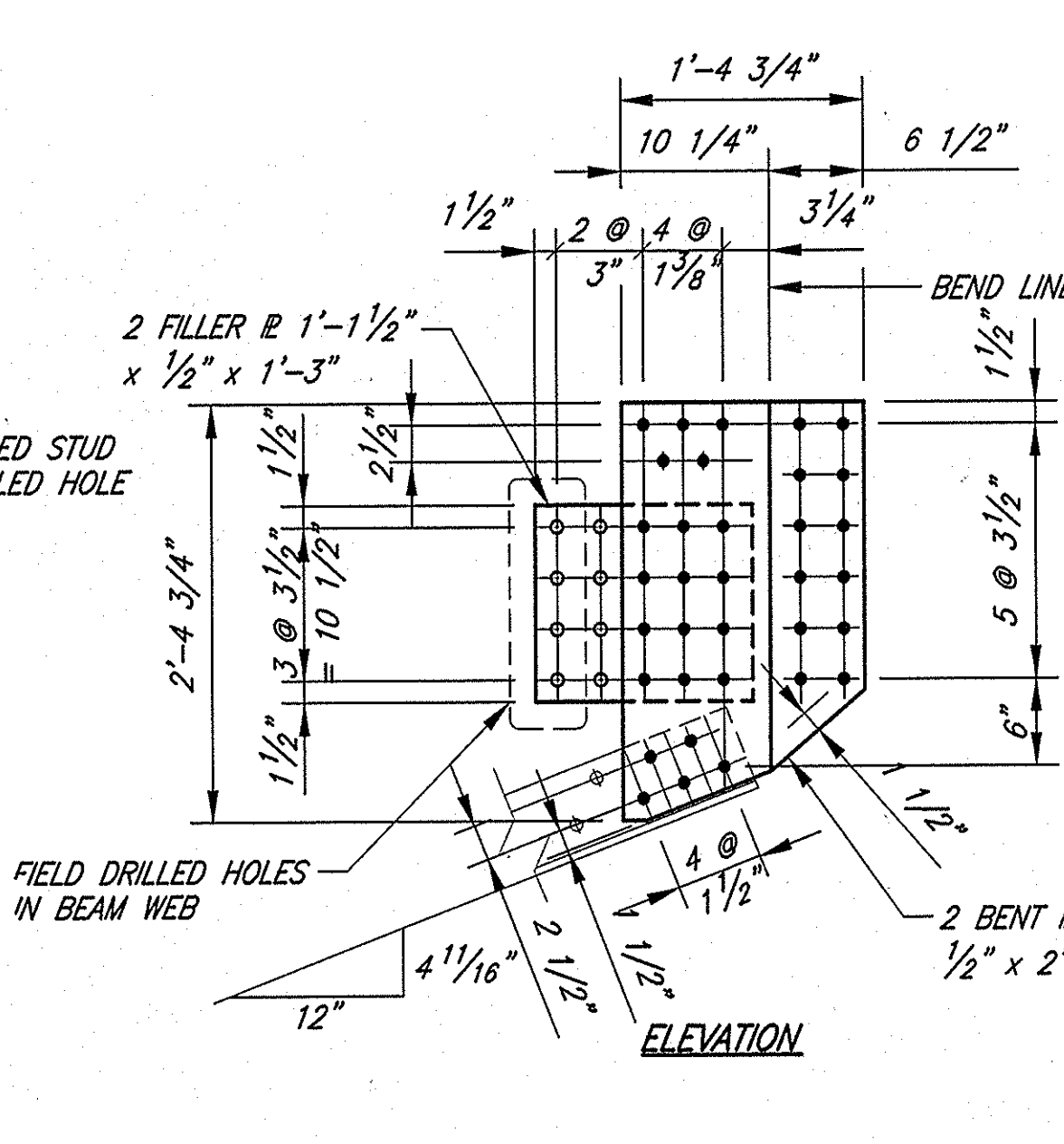
PLAN
 CONNECTION PLATE DETAILS
 BEAM FB-1 (SPANS A-D, H & K)



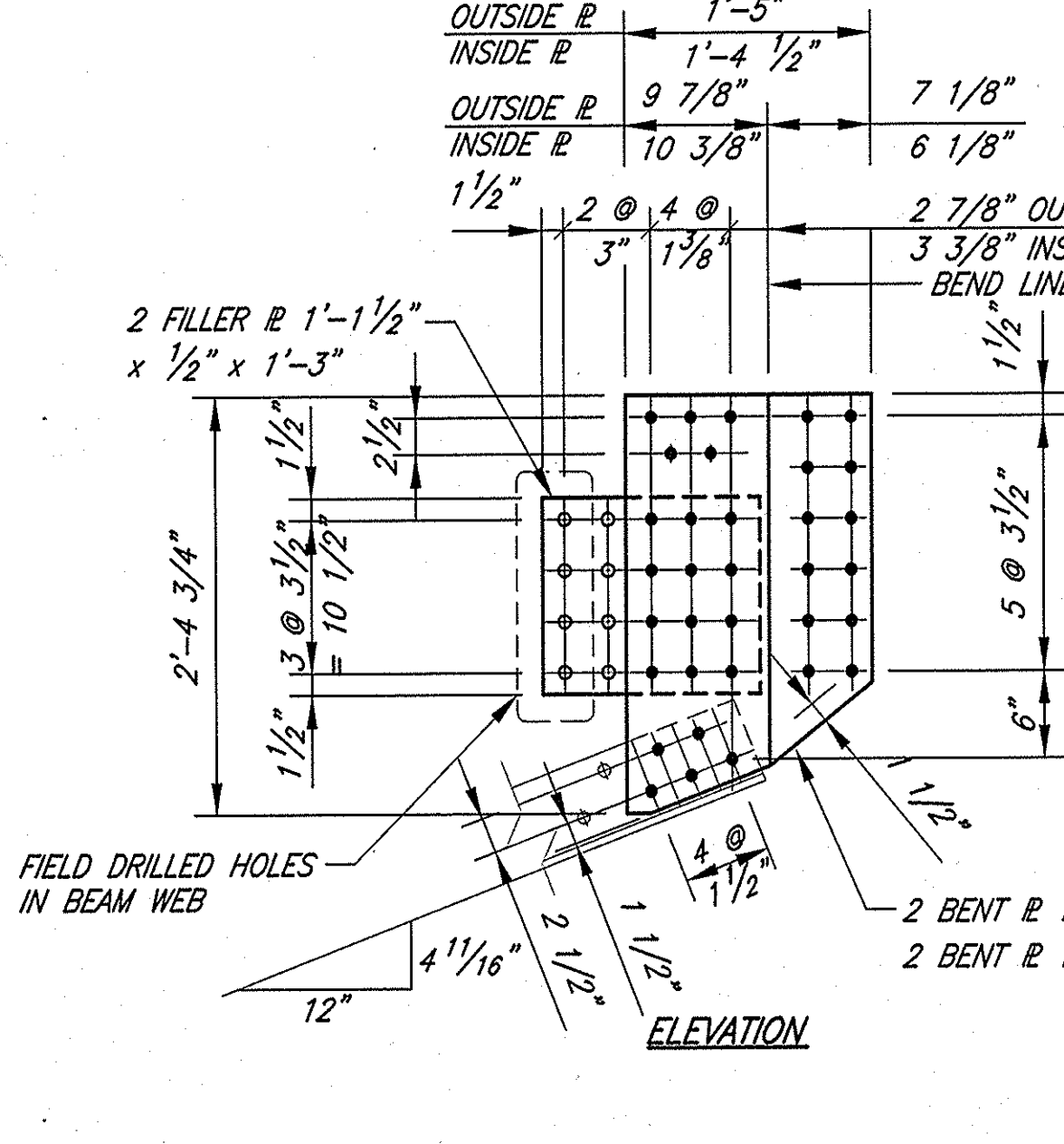
PLAN
 CONNECTION PLATE DETAILS
 BEAM FB-1 (SPANS E, F & G)



TYPICAL THREADED STUD DETAIL
 SPANS A-K



ELEVATION
 CONNECTION PLATE DETAILS
 BEAM FB-1 (SPANS A-D, H & K)



ELEVATION
 CONNECTION PLATE DETAILS
 BEAM FB-1 (SPANS E, F & G)

CONNECTION PLATE NOTES:

- FLOOR BEAMS SHALL BE COMPLETELY SUPPORTED AND BRACED PRIOR TO CONNECTION PLATE REMOVAL. SHORING AND BRACING SHALL NOT BE REMOVED UNTIL ALL BOLTS ARE FINAL TIGHTENED.
- ALL BOLTS TO BE INSTALLED THRU REMOVED RIVET HOLES IN EXISTING STRUCTURE EXCEPT AS NOTED.
- ALL DRILLED HOLES FOR CONNECTION PLATES TO BE SUBPUNCHED 13/16" Ø AND REAMED TO 15/16" Ø IN THE FIELD TO MATCH EXISTING.

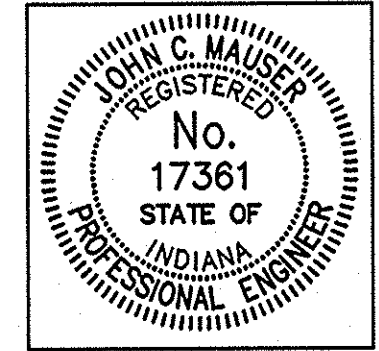
RIVET REPLACEMENT NOTES:

- ONLY THE INSIDE ROWS OF THE BOTTOM FLANGE SHALL BE SUBJECT TO RIVET REPLACEMENT BY H.S. BOLTS.
- REMOVE EXISTING RIVETS AND REPLACE W/ 7/8" A325 BOLTS.
- THE REPLACEMENT LAYOUT IS MEANT TO ESTABLISH AN APPROXIMATE NUMBER AND LOCATION FOR INDIVIDUAL RIVET REPLACEMENT. THE ACTUAL SPACING AND NUMBER OF RIVETS TO BE REPLACED WITH BOLTS SHALL BE APPROVED BY THE ENGINEER PRIOR TO INSTALLATION.

SHEAR STUD INSTALLATION NOTES:

- THE TYPICAL SHEAR STUD LAYOUT SHOWS THE RANGES OF MAXIMUM SPACING AND THE MINIMUM NUMBER OF STUDS REQUIRED. THE ACTUAL SPACING AND NUMBER OF STUDS INSTALLED WILL BE DEPENDENT ON THE LOCATION OF EXISTING RIVET HOLES.
- ALL STUDS ARE TO BE INSTALLED IN HOLES WHERE EXISTING RIVETS HAVE BEEN REMOVED EXCEPT AS NOTED. A325 BOLTS SHALL BE PLACED IN ANY UNUSED OPEN HOLES WHERE SHEAR STUDS ARE NOT INSTALLED. FINAL STUD INSTALLATION WILL BE APPROVED BY THE ENGINEER PRIOR TO INSTALLING CONCRETE.
- ADJUST HEIGHT OF BOLT TO MAINTAIN MINIMUM STUD EMBEDMENT OF 2 INCHES ABOVE BOTTOM OF FLOOR SLAB AND 2 INCHES CLEAR TO TOP OF FLOOR SLAB.
- REMOVE AND REPLACE CONCRETE DECK AND REINFORCING STEEL AS SHOWN ON SHEET 5.
- REMOVE EXISTING JOINT AND INSTALL NEW SS JOINTS AS SHOWN ON SHEET 5.

Time: 8:47:39
 Date: 11/2/2000
 Drawing File: C:\jcm\INDOT\ERB\372\DWG\372-05.DWG (S:\mgp\chc)



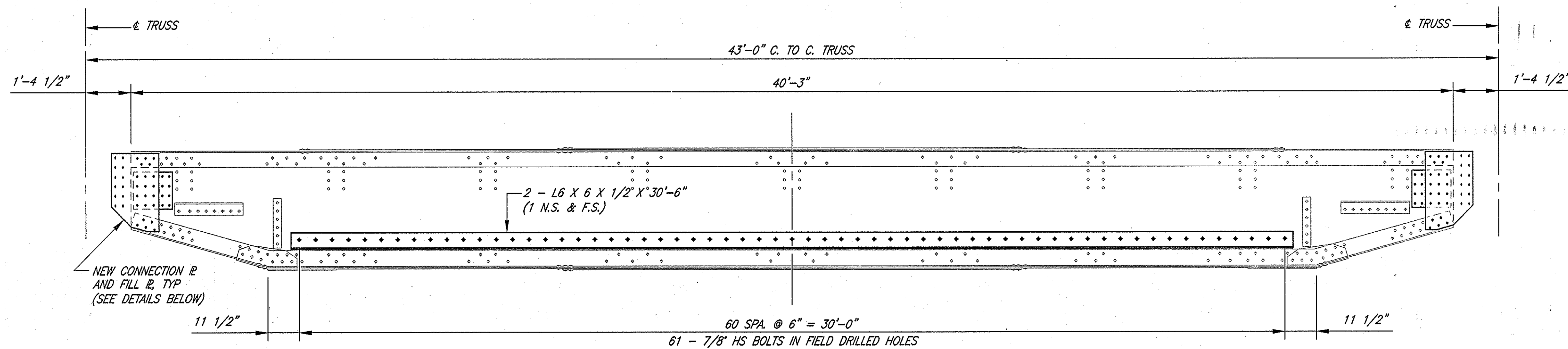
RECOMMENDED FOR APPROVAL
John C. Mauser 11/2/00
 DESIGN ENGINEER DATE

DESIGNED: JCM DRAWN: STB
 CHECKED: RJP CHECKED: JCM

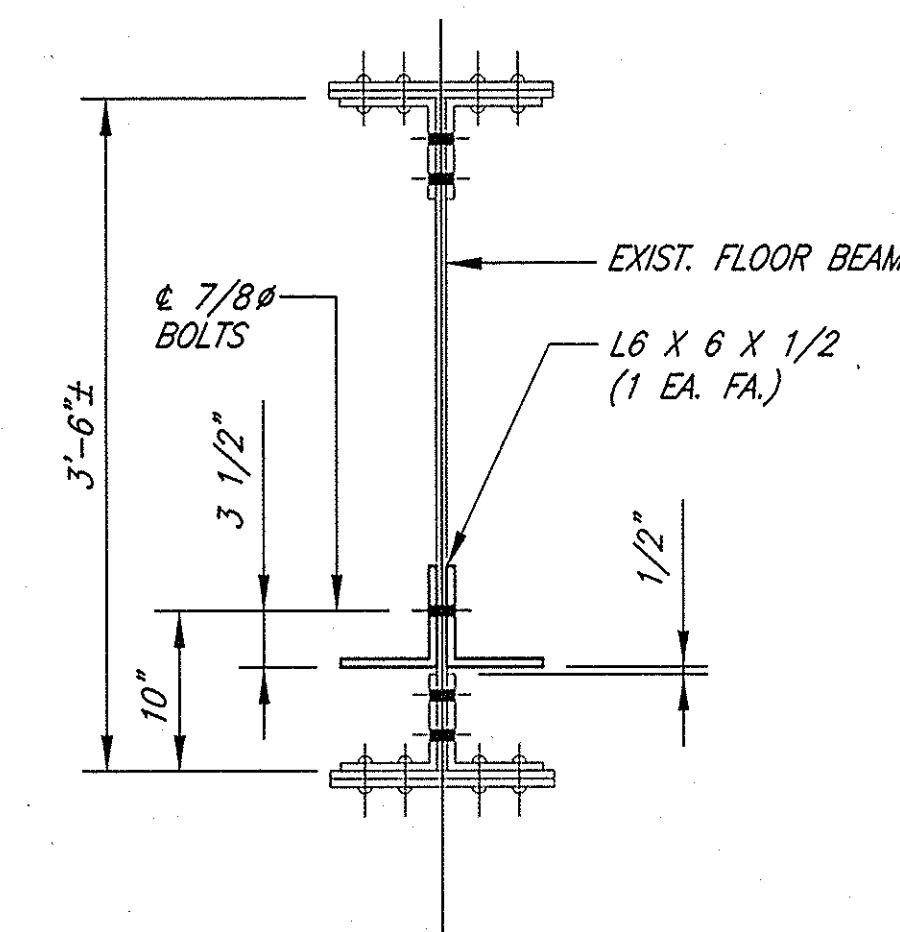
INDIANA
DEPARTMENT OF TRANSPORTATION

END FLOOR BEAM FB-1
 SPANS A-D, E-G, H & K

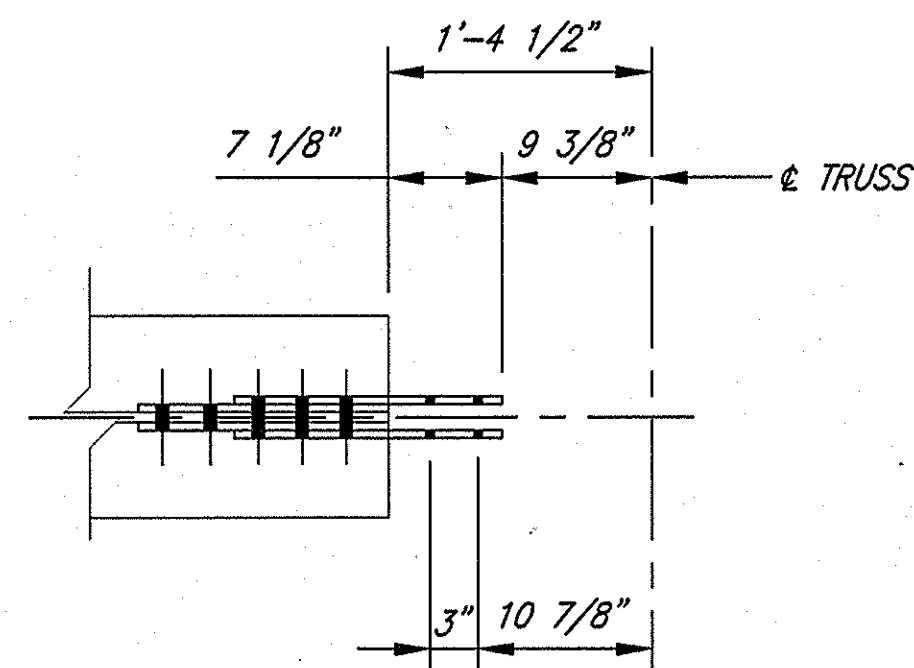
HORIZONTAL SCALE	BRIDGE FILE
AS NOTED	152-45-1031F
VERTICAL SCALE	DESIGNATION
	9800480
SURVEY BOOK	SHEETS
	6 of 8
CONTRACT	PROJECT
B-25411	BR/N881 (007)



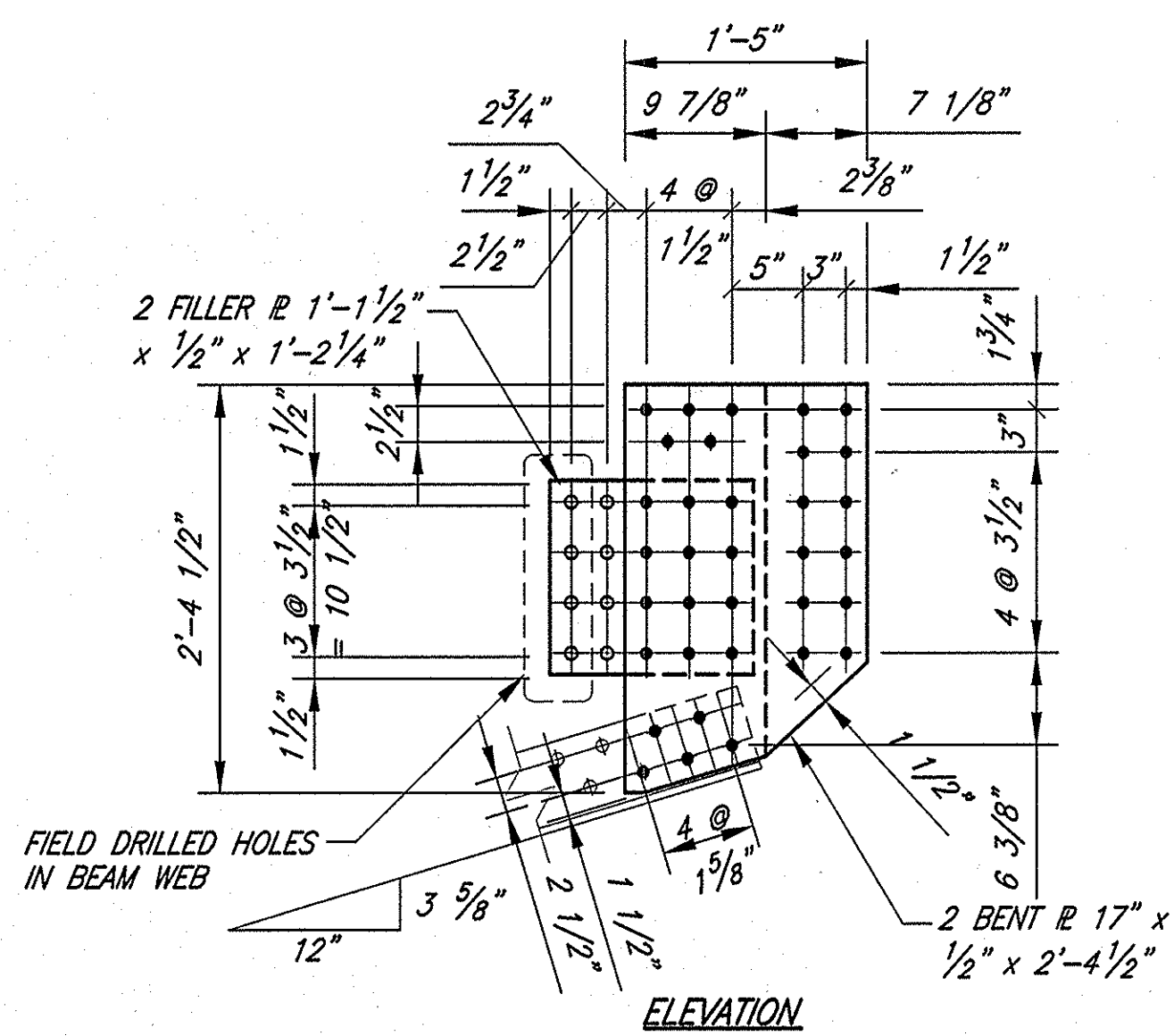
**ELEVATION
END FLOOR BEAM FB-7**
SCALE: 1/2" = 1'-0"



TYPICAL SECTION THRU FB-7
SCALE: 1" = 1'-0"



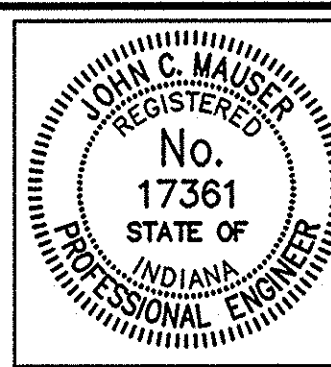
PLAN



**CONNECTION PLATE DETAILS
BEAM FB-7 (SPANS A & K)**

NOTE:
SEE SHEET 6 FOR CONNECTION PLATE NOTES.

Time: 8:49 AM
 Date: 11/24/00
 Scale: 1/2" = 1'-0"
 Drawing File: K:\Draw (INDOT)\BEB\372\DWG\372-06.dwg (Stangphee)



RECOMMENDED FOR APPROVAL
John C. Mauer 11/8/00
 DESIGN ENGINEER DATE

DESIGNED: JCM DRAWN: STB
 CHECKED: RJP CHECKED: JCM

INDIANA
 DEPARTMENT OF TRANSPORTATION

END FLOOR BEAM FB-7
 SPANS A & K

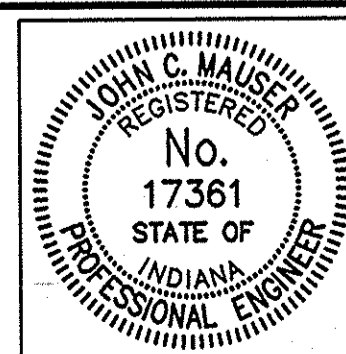
HORIZONTAL SCALE	BRIDGE FILE
AS NOTED	152-45-1031F
VERTICAL SCALE	DESIGNATION
	9800480
SURVEY BOOK	SHEETS
	7 of 8
CONTRACT	PROJECT
B-25411	BR/N881 (007)

SUMMARY OF BRIDGE QUANTITIES

ITEM	CONCRETE				CONCRETE "C" IN RAILING		REINF. STEEL LBS.	REINF. STEEL EPOXY COATED LBS.	EXPANSION JOINT					DRILLED HOLES EACH	RIVET REMOVAL EACH	STRUCTURAL STEEL ** LBS.	SHEAR CONNECTOR 7/8" STUDS ** EACH	FIELD DRILLED HOLES IN CONC EACH	REVTMENT RIRRAP	CLASS I RIPRAP
	"C" IN SUPER	"A" IN SUBSTR.			CU. YDS.	L.FT.			TYPE BSJT	TYPE BSJT	TYPE BSJT	CLASS S-S	CLASS S-S REPLACEMENT SEAL							
	CU. YDS.	CU. YDS.							L.FT.	L.FT.	L.FT.	L.FT.	L.FT.							
SUPERSTRUCTURE																				
SPANS "A-D, H, K" FB-1 & FB-7	44.5							1286						1172	2440	21119	880			
SPANS "E, F, G" FB-1	22.7							648						646	1616	10682	528			
SPANS "L"	6.5							555												
SUBSTRUCTURE																				
ABUT. NO. 1		1.6						138										44		
TOTALS	73.7	1.6						2627						1818	4056	31801	1408	44		

** ESTIMATED QUANTITY

Time: 8:49:54
 Date: 11/27/2000
 Drawing File: K:\drive\INDOT-RHB\272\DWG\SUM-SHT.dwg (Sbangscho)



RECOMMENDED FOR APPROVAL: *John C. Mauser* 11/27/00
 DESIGN ENGINEER DATE
 DESIGNED: JCM DRAWN: STB
 CHECKED: RJP CHECKED: JCM

INDIANA DEPARTMENT OF TRANSPORTATION
 BRIDGE SUMMARY OF QUANTITIES

HORIZONTAL SCALE	BRIDGE FILE
VERTICAL SCALE	152-45-1031F
	DESIGNATION
	9800480
SURVEY BOOK	SHEETS
	8 of 8
CONTRACT	PROJECT
B-25411	BR/N881 (007)