

INDEX		SUBJECT						
SHEET NO.	SHEET DESIGNATION	PROJECT	SECTION	TYPE	SPAN	TYPE	STATION	CONTRACT NO.
1	ONE SHEET	FAS 2(5)	3084	R.C. ARCH	1@40'	PAWPAW CR.	28+35	2750
1	INDEX & TITLE SHEET							
2	ONE SHEET							
3	ROAD PLAN & PROFILE							
4	GENERAL PLAN							
5	DETAILS							
6	DETAILS: BEND, MAGS. & BILLS OF MATERIALS							
7	BRIDGE STD. A 2							
8	BRIDGE STD. C							
9	ONE SHEET							
10	ONE SHEET							
11	ROAD STD. D-11-FR							
12	ROAD STD. SHEET A							
13	BRIDGE STD. M1							
14	BRIDGE STD. S1							
15	BRIDGE STD. T SHEET A							
16	BRIDGE STD. T SHEET B							
17	BRIDGE STD. Z SHEET A							
18	BRIDGE STD. Z SHEET B							

STATE OF INDIANA
STATE HIGHWAY COMMISSION

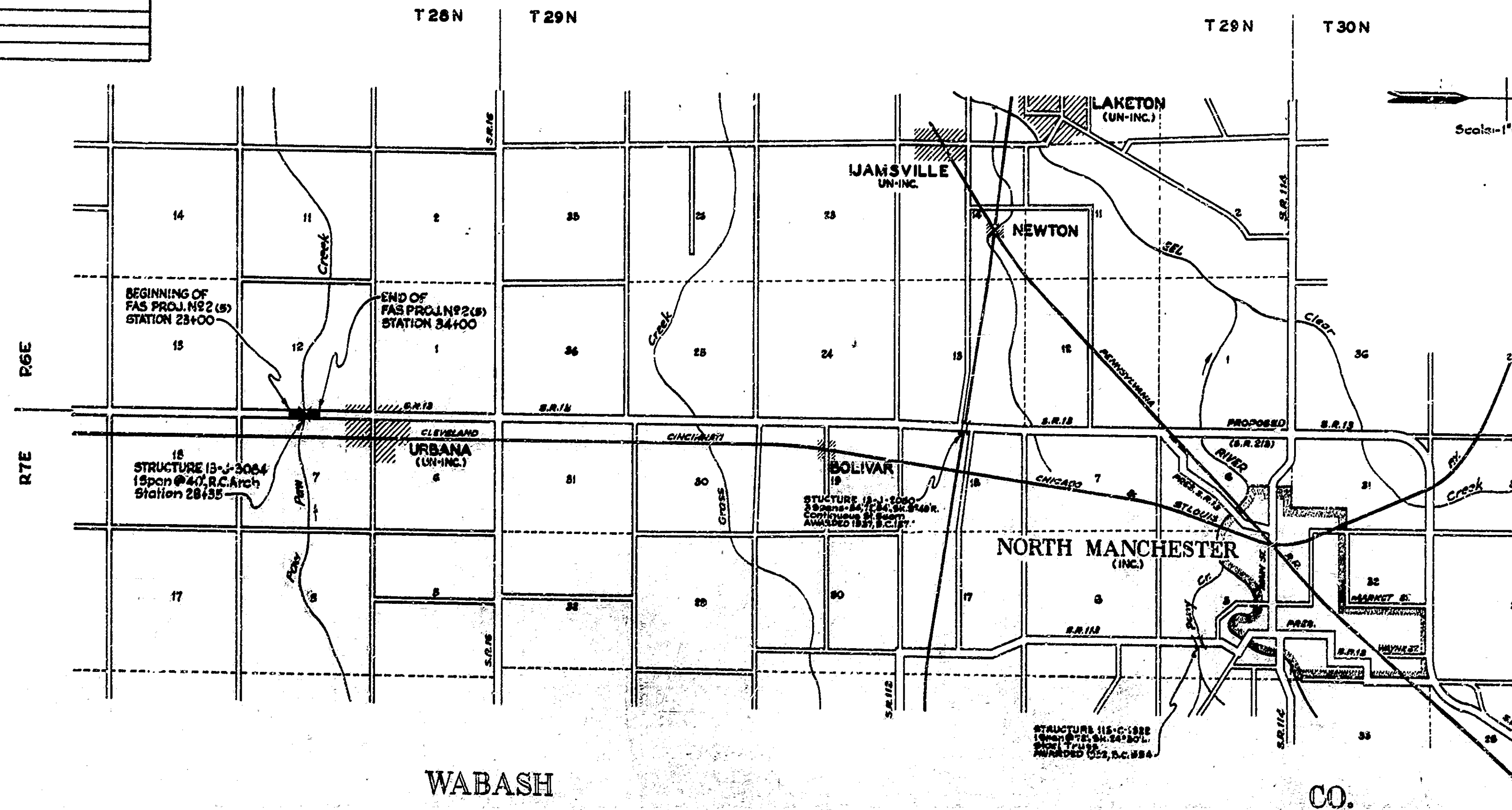
BRIDGE PLANS
FOR SPANS OVER 20 FEET
ON
STATE ROAD NO. 13 SECTION J
FAS PROJECT NO. 2 (5) (1943)

WABASH - SYRACUSE ROAD

DESCRIPTION OF FAS PROJ. NO. 2 (5) (1943) - BEGINNING AT A POINT ON PROPOSED S.R. 13 APPROX. 2105' NORTH OF THE CORNER, COMMON TO SECTIONS 12, 13, 18 & 7 AND EXTENDING NORTH A DISTANCE OF APPROX. 1100' TO A POINT ON PROPOSED S.R. 13 APPROX. 3205' NORTH OF THE CORNER, COMMON TO SECTIONS 12, 13, 18 & 7, ALL IN SECTIONS 7 & 12-T28N-R 7E, WABASH COUNTY.

ROADWAY LENGTH = 0.201 MI.
BRIDGE LENGTH = 0.007 MI.
TOTAL LENGTH = 0.208 MI. MAX. GRADE = 1.25%

BRIDGES OVER 20 SPAN					
FED. ROAD DIST. NO.	STATE	FAS. PROJ. NO.	TOTAL SPAN	SHEET NO.	TOTAL SHEETS
4	IND.	2(5)	1947	1	18



Revised 9-21-48 For Construction Changes

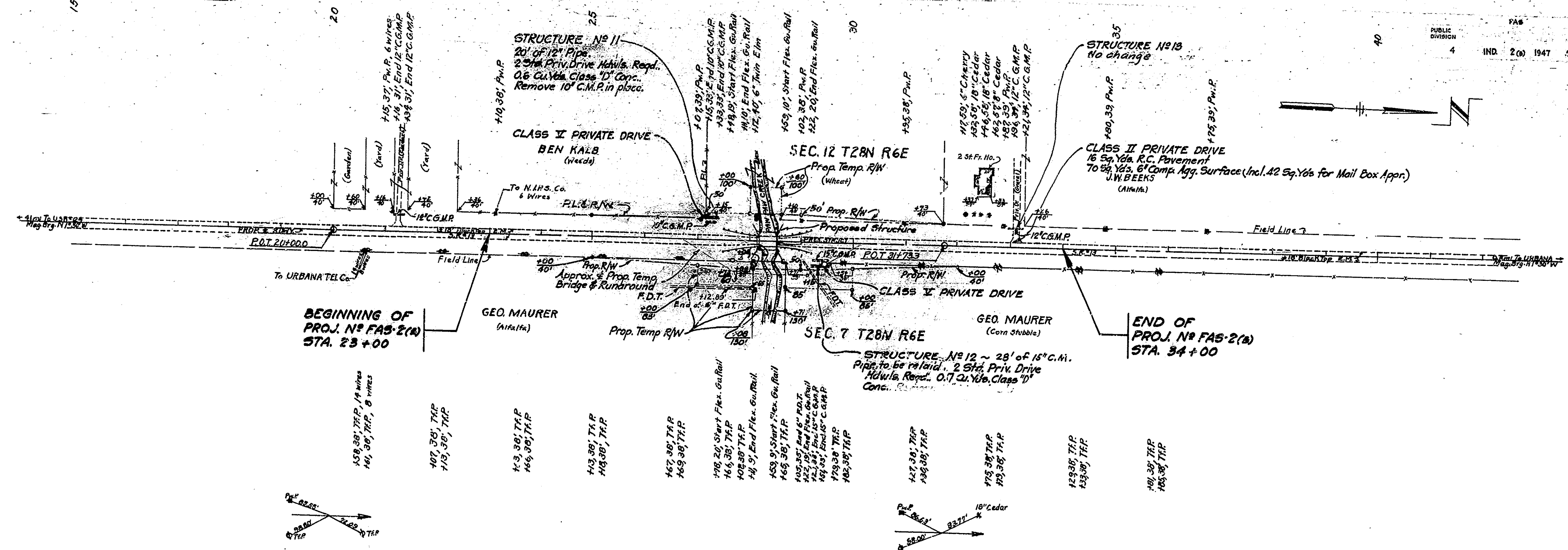
APPROVED AND ADOPTED 8-1-46
BY STATE HIGHWAY COMMISSION OF INDIANA
John H. ...
CHAIRMAN, STATE HIGHWAY COMMISSION OF INDIANA
APPROVED 7-30-46
Carl E. ...
CHIEF ENGINEER, STATE HIGHWAY COMMISSION OF INDIANA

RECOMMENDED FOR APPROVAL
DISTRICT ENGINEER
PUBLIC WORKS ADMINISTRATION
FEDERAL WORKS AGENCY

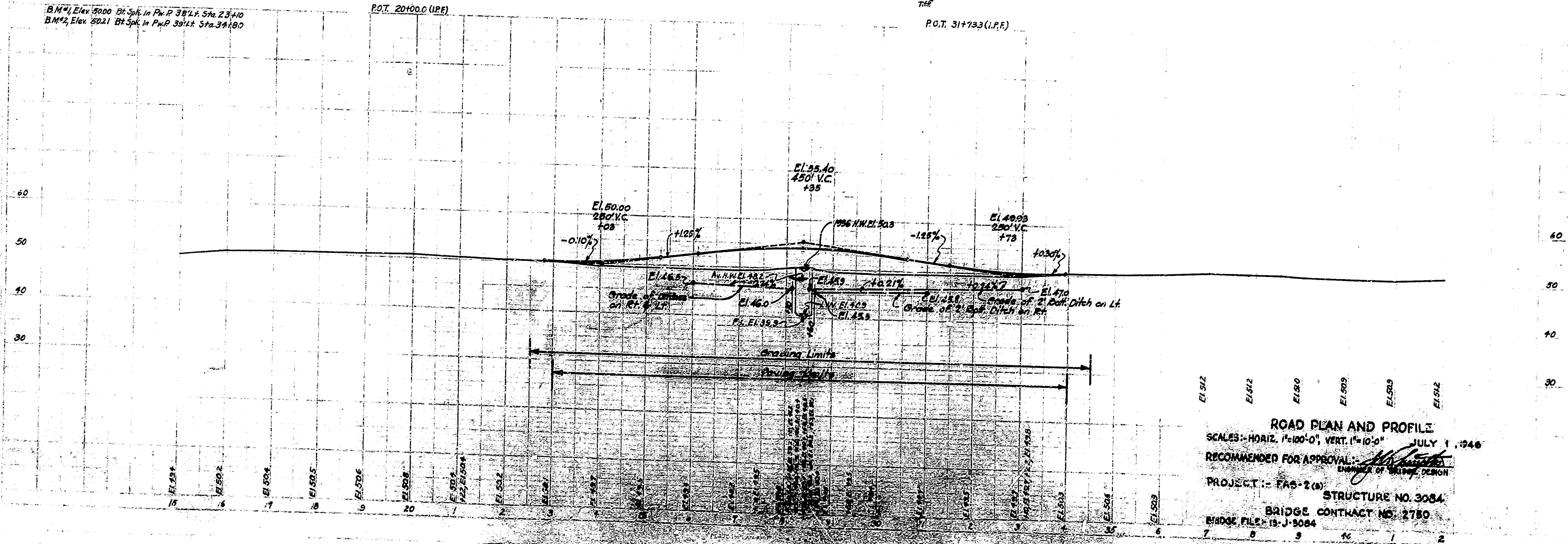
APPROVED
BRIDGE ENGINEER
PUBLIC WORKS ADMINISTRATION
FEDERAL WORKS AGENCY

STATE HIGHWAY COMMISSION STANDARD
BRIDGE SPECIFICATIONS DATED NOVEMBER 1939
TO BE USED WITH THESE PLANS

RECOMMENDED FOR APPROVAL DATE 7-25-46

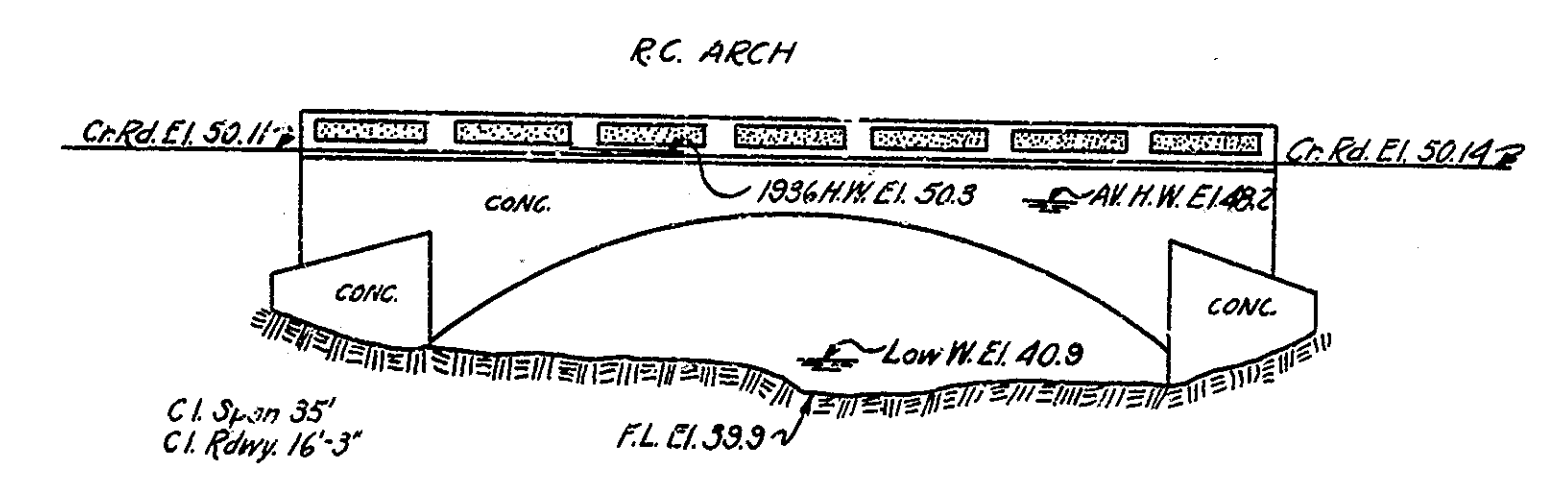
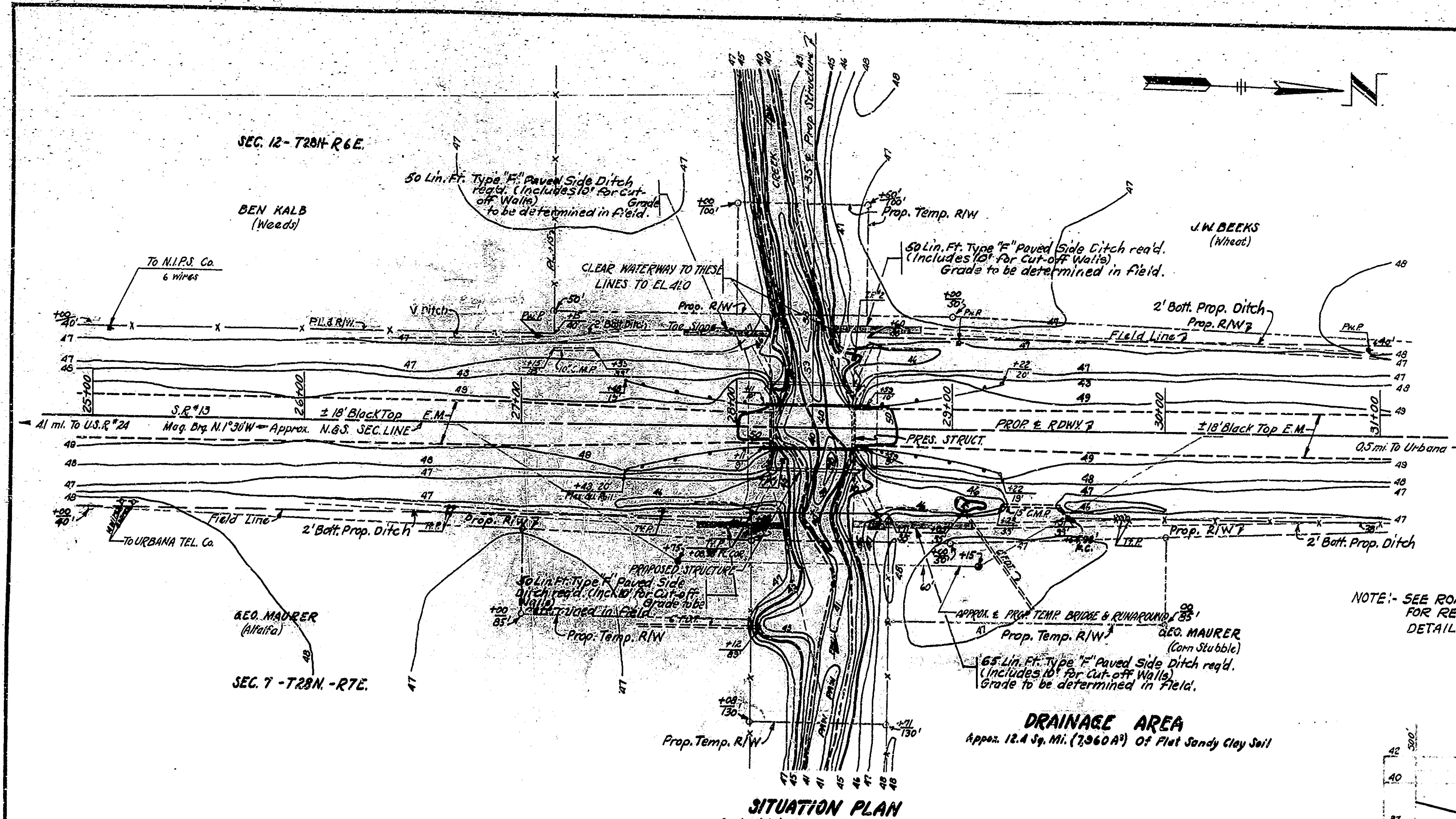


BM #1 Elev. 500.00 Bl. Spk. in P.W.P. 38' x 4" Sta. 23+10
 BM #2 Elev. 502.1 Bl. Spk. in P.W.P. 38' x 4" Sta. 34+80

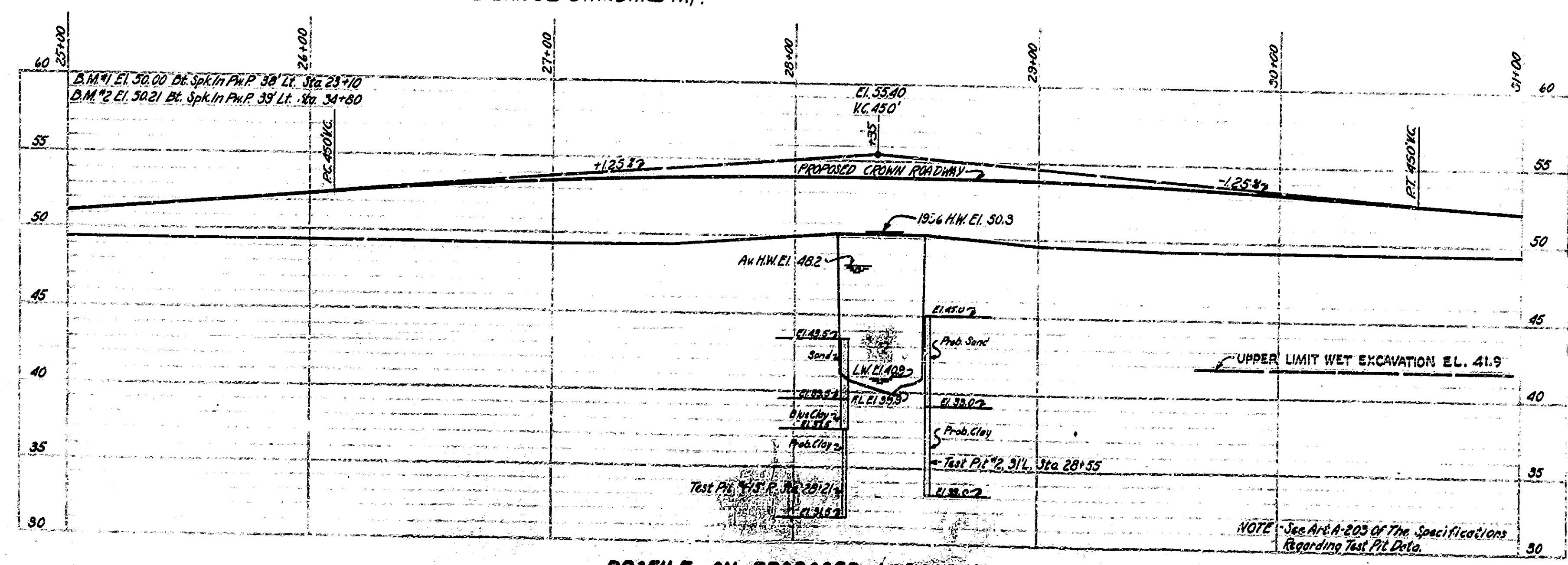
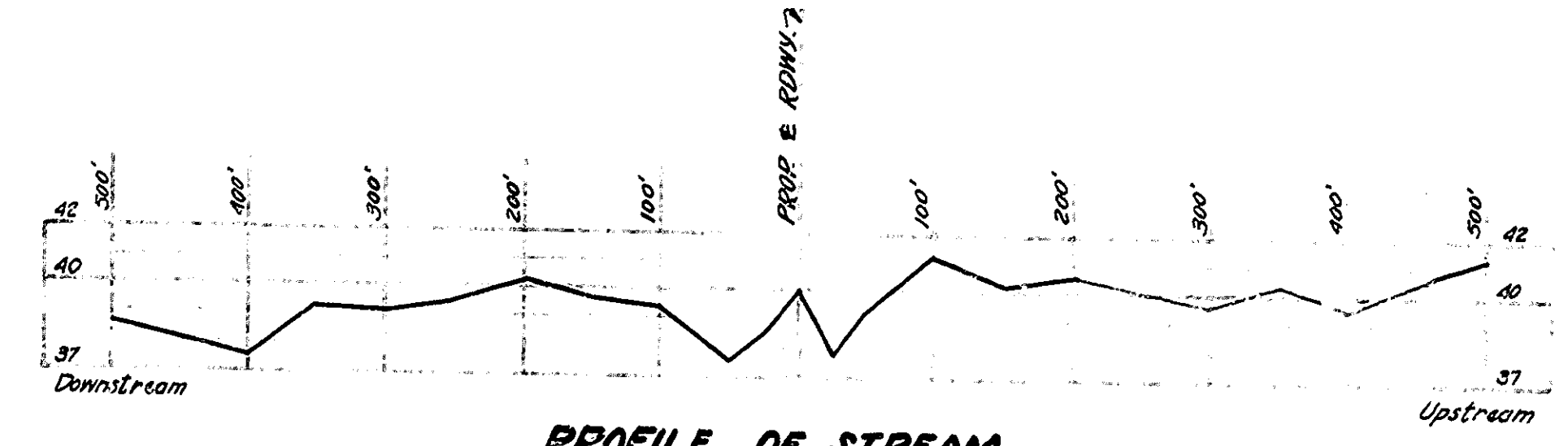


ROAD PLAN AND PROFILE
 SCALES: -HORIZ. 1"=100'-0", VERT. 1"=10'-0" JULY 1, 1946
 RECOMMENDED FOR APPROVAL: [Signature]
 PROJECT: - FAS-2 (a)
 STRUCTURE NO. 3084
 BRIDGE CONTRACT NO. 2780
 BRIDGE FILE: 19-J-3084

BRIDGES OVER 20' SPAN					
POP. DIST. STATE	FAS. PROJ. NO.	FISCAL YEAR	SHEET NO.	TOTAL SHEETS	
4 IND.	280	1947	3	18	



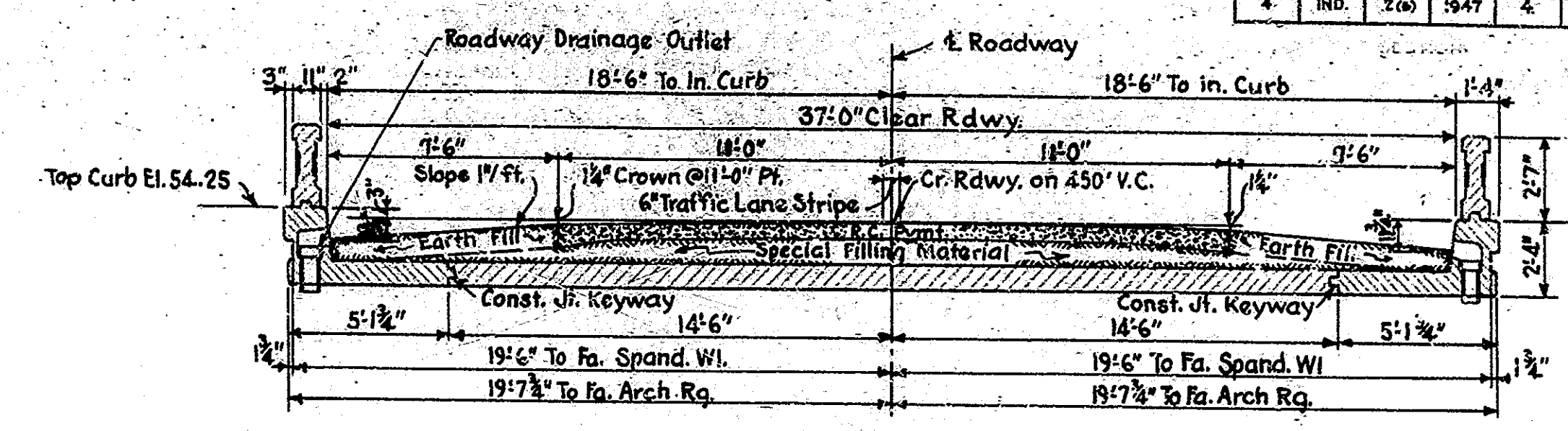
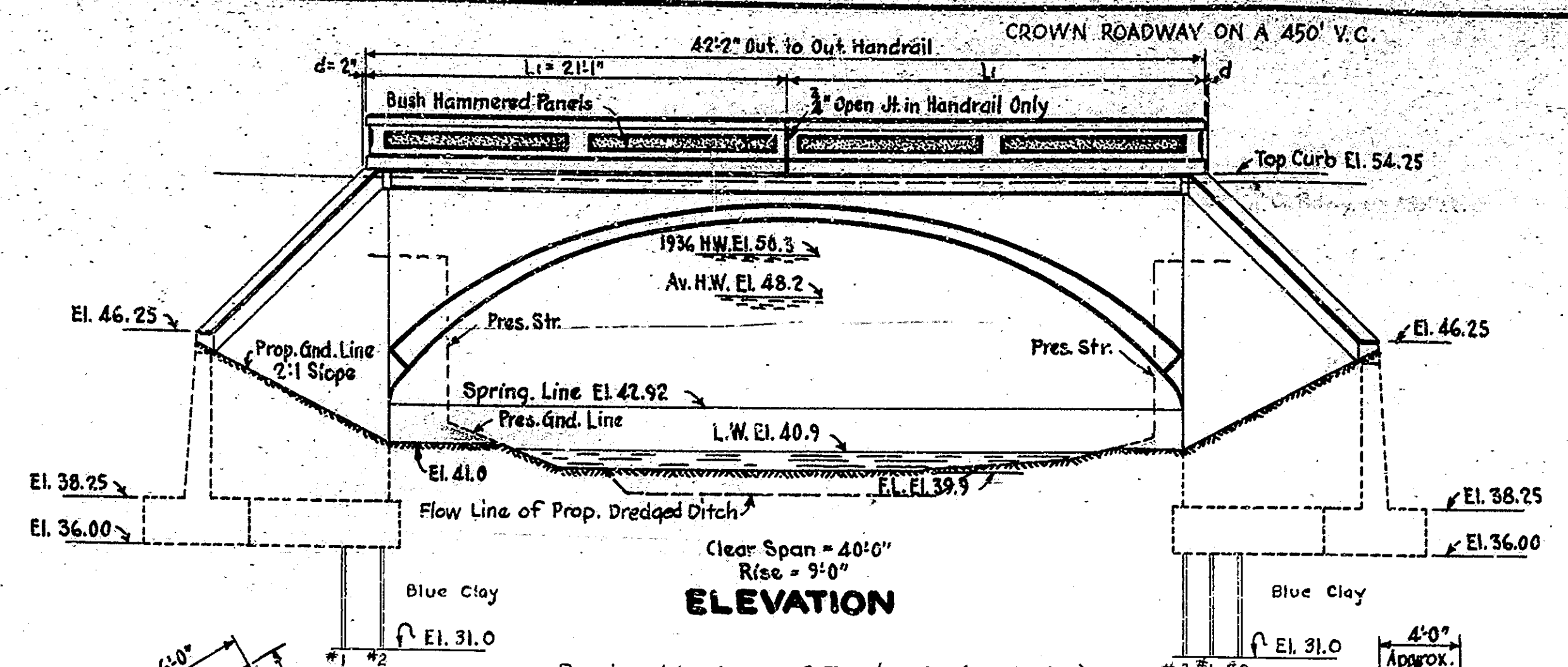
NOTE:- SEE ROAD PLAN FOR REFERENCES AND APPROACH DETAILS NOT SHOWN.



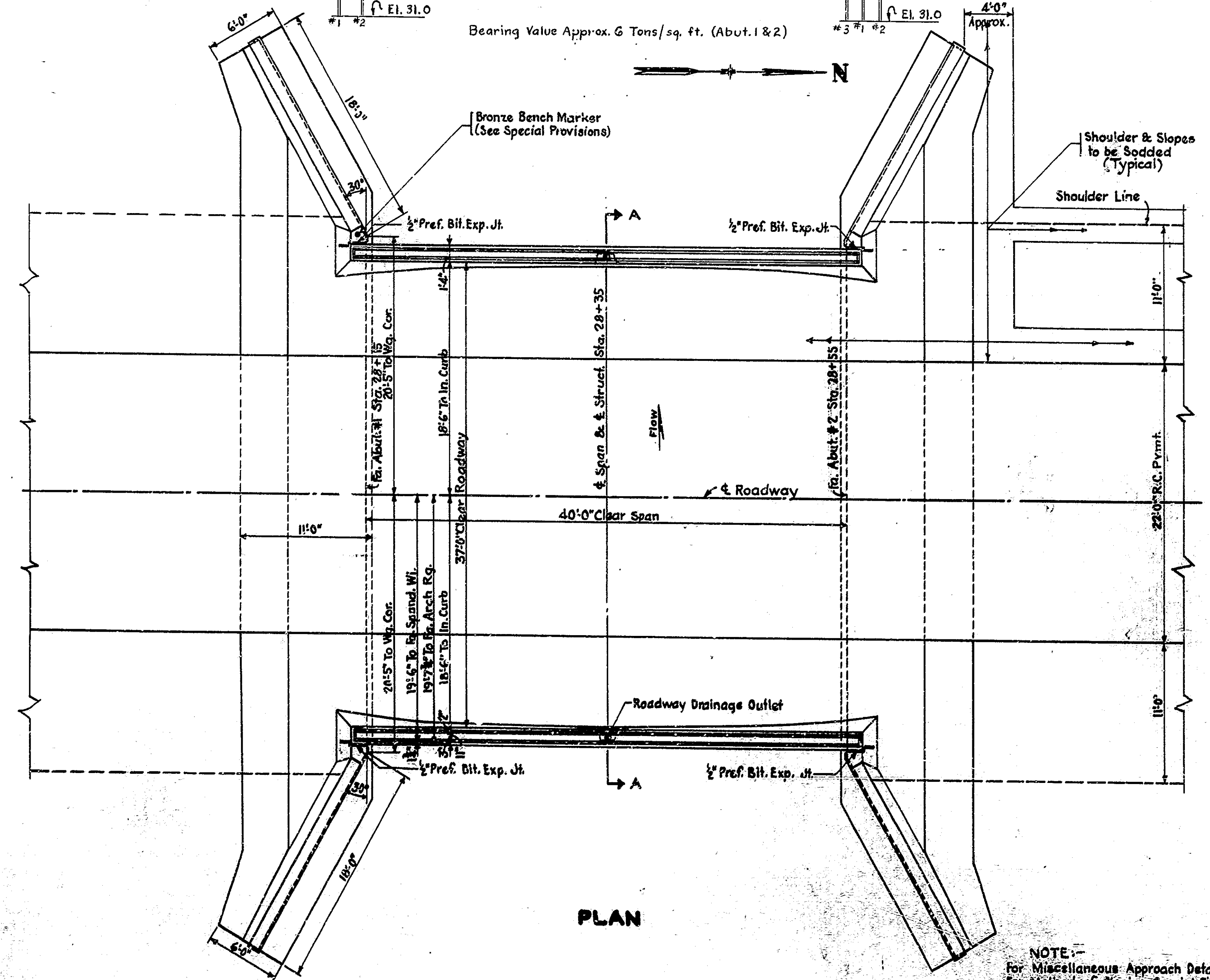
LAYOUT
REINFORCED CONCRETE ARCH BRIDGE
1 SPAN @ 40'-0" OVER PAW-PAW CREEK ON STATE ROAD 13-J
STATE HIGHWAY COMMISSION OF INDIANA
WABASH COUNTY

SCALE:- AS NOTED JULY 1, 1946
RECOMMENDED FOR APPROVAL: *[Signature]*
PROJECT:- FAS-2 (b) STATION:- 28+35
DRAWING:- C₁ OF 4 STRUCTURE NO. 3084
BRIDGE CONTRACT NO. 2780
BRIDGE FILE:- 15-J-3084

BRIDGES OVER 20' SPAN					
PROJ. NO.	STATE	F.A.P. PROJ. NO.	FISCAL YEAR	SHEET NO.	TOTAL SHEETS
4	IND.	2(0)	1947	4	18



SECTION A-A
Scale: 1/4" = 1'-0"



PLAN

GENERAL NOTES

Depth of footings to be extended if found necessary. See Art. B 202 of Specifications. Reinforcing steel covering shall be 3 inches in footings except bottom steel which shall be 4 inches, 2 inches in all other parts unless noted. All Dimensions on Details and Bending Diagrams for Reinforcing Bars are measured on centerlines of Bars.

Concrete in footings, wingwalls, and abutments up to skawbacks to be Class "E". Concrete in structure not noted above to be Class "D". Continuous concrete pours shall be required between construction joints as shown on detail plans.

Waterproof abutments, wingwalls, arch ring, and spandrel walls in accordance with Specifications.

Bevel forms 1/2 inch under copings; and chamfer exposed edges 1/2 inch unless noted.

2 Roadway Drainage Outlets to be placed as shown on this drawing. Upstream wings to be rip-rapped.

See Special Provisions for items included in this contract.

STANDARD DRAWINGS:
Use Concrete Handrail Details Bridge Std. A2, dated March 29, 1935, revised 2-20-42.
Use Standard Miscellaneous Details Br. Std. C, dated Oct. 1, 1943, revised 6-1-45.

STANDARD D-II-FR SECTION
See Std. Drwg.
(6" Traffic Lane Stripe to be placed on & Rdwy.)

DESIGN DATA

Unit Stresses:-
F_c = 20,000#/sq.
F_s = 10,000#/sq.
For arch ring analysis an increase of 25% is permitted due to inclusion of temperature and rib shortening stresses.

Live Load:-
H20 Truck Loading with distribution in accordance with 1941 A.A.S.H.O. Specifications.

NOTE:-
For Miscellaneous Approach Details, See Br. Std. M, dated July 1, 1944, revised 11-1-45.
For Method of Placing Special Filling Material, See Br. Std. S, dated June 13, 1939.

GENERAL PLAN
REINFORCED CONCRETE ARCH BRIDGE
SPAN @ 40'-0" 37'-0" RDWY.
OVER PAW-PAW CREEK ON STATE ROAD 13-J
STATE HIGHWAY COMMISSION OF INDIANA
WABASH COUNTY

SCALE: 3/16" = 1'-0" UNLESS NOTED JULY 1 1946

RECOMMENDED FOR APPROVAL: *[Signature]*

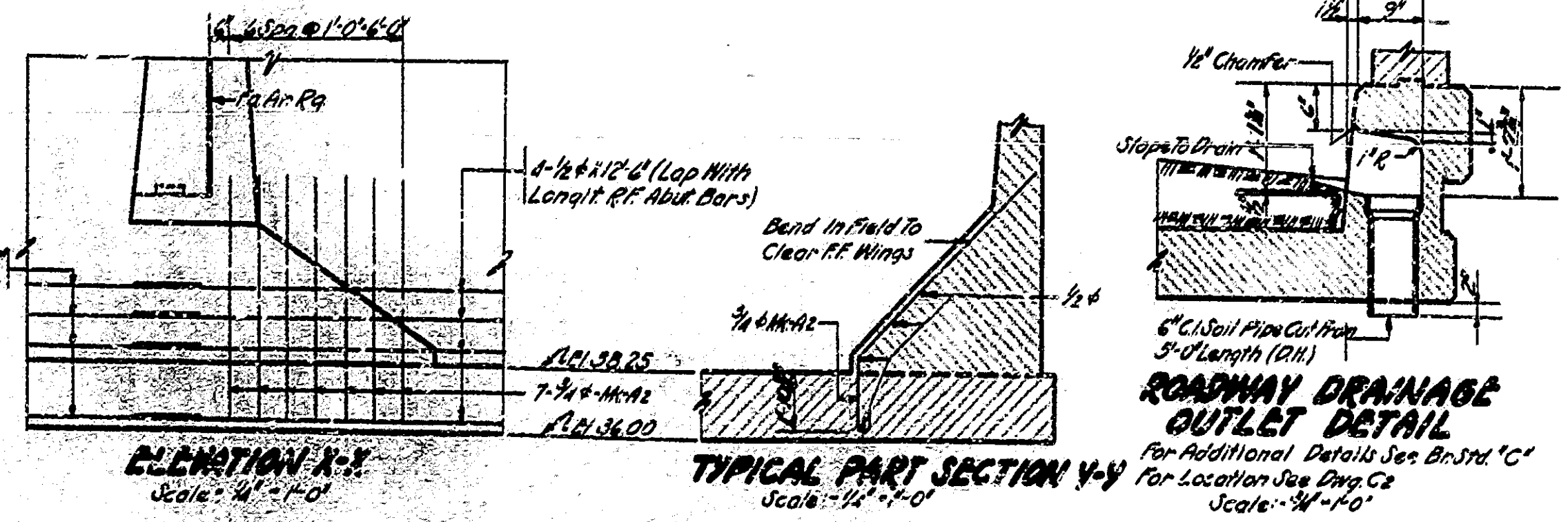
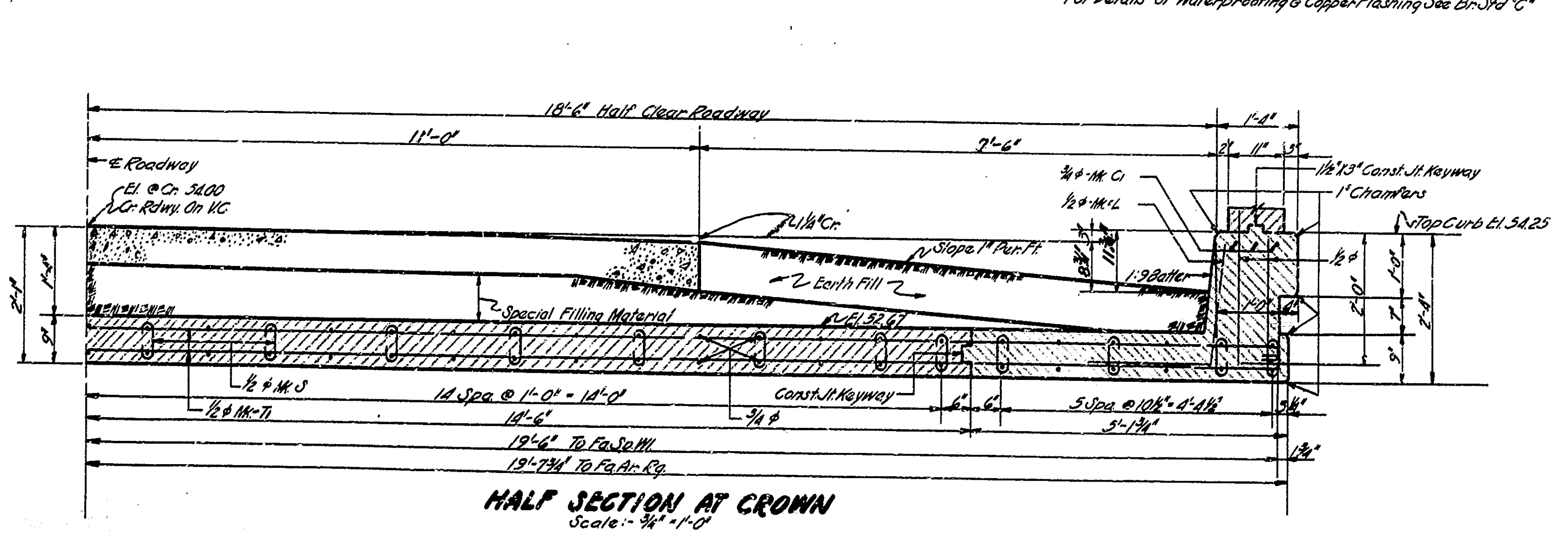
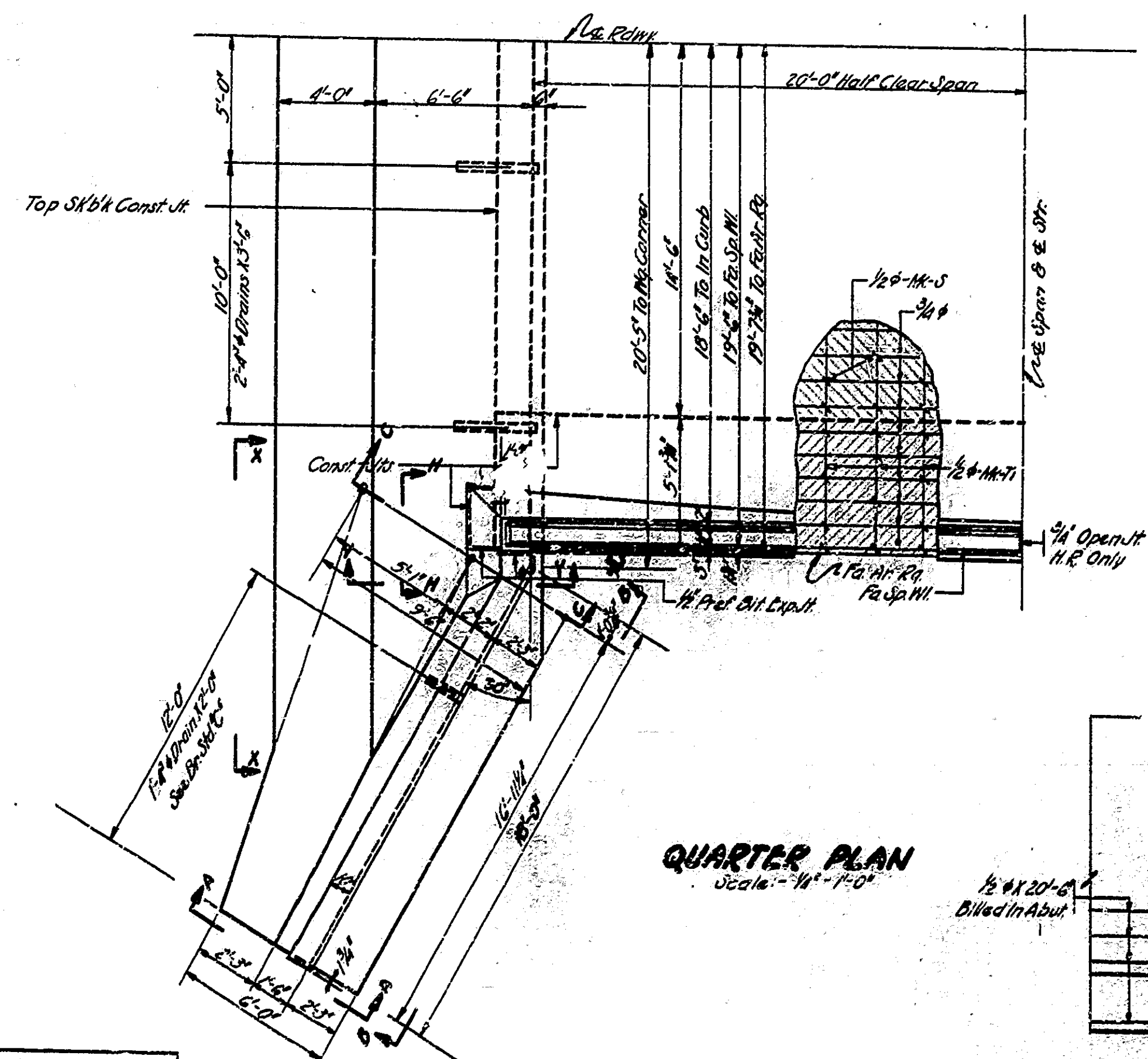
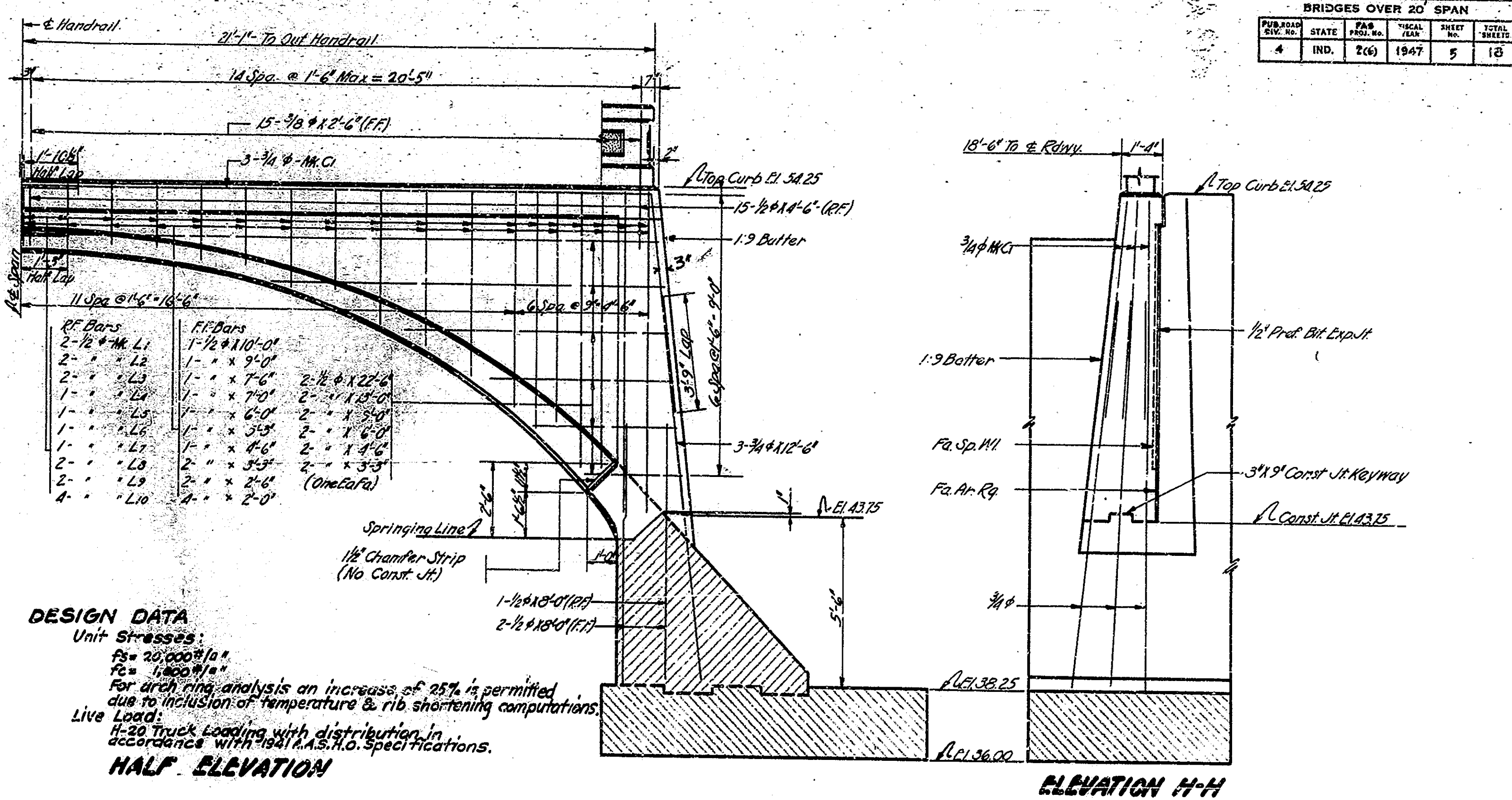
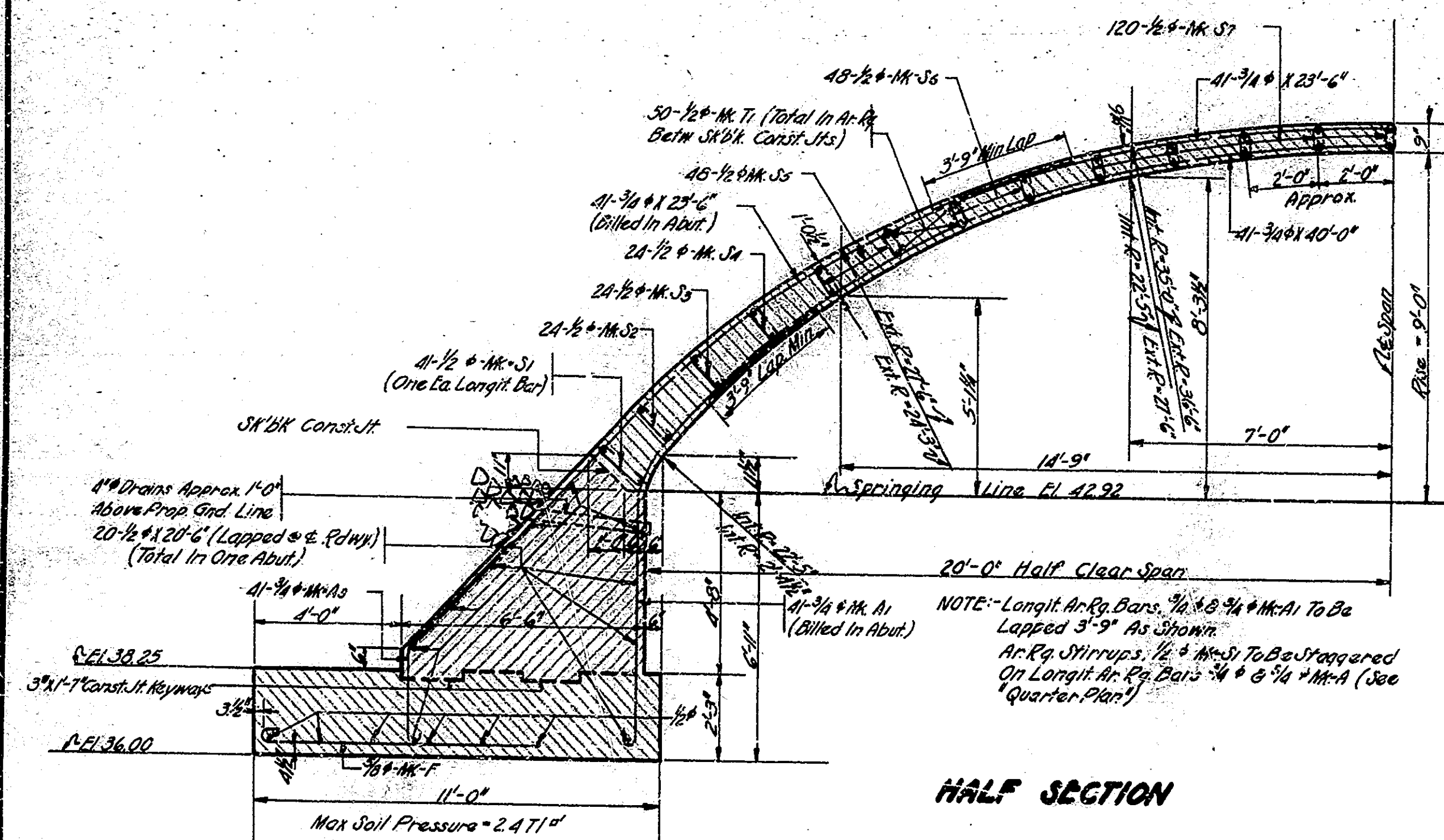
PROJECT: P.A.S. 2(0) STATION: 28+35
STRUCTURE NO. 3054

DRAWING: C2 OF 4 BRIDGE CONTRACT NO. 2750

DESIGNED BY: C.W.D.
DRAWN BY: T.E.G.
CHECKED BY: J.L.M.
APPROVED BY: J.L.M.

BRIDGES OVER 20' SPAN					
FEDERAL DIV. NO.	STATE	PROJ. NO.	SCALE	SHEET NO.	TOTAL SHEETS
4	IND.	2(6)	1947	5	13

NOTE: - FOR HANDRAIL DETAILS SEE BR STD A2 WITHOUT POSTS.
For Number And Length Of Horizontal Bars In Handrail See Bill. of Materials!



DETAILS
STATE HIGHWAY COMMISSION OF INDIANA

SCALE: 3/8" = 1'-0" UNLESS NOTED JULY 1 1946
RECOMMENDED FOR APPROVAL: [Signature]
PROJECT: FAB-2(6) STATION: 28+35
DRAWING: C3 OF 4 STRUCTURE NO. 3054
BRIDGE CONTRACT NO. 2750
BRIDGE FILE: 18-J-8084

DESIGNED BY: [Name]
DRAWN BY: [Name]
CHECKED BY: [Name]
TRADE: [Name]

