

CONTRACT NO. B-15068

| INDEX | | | | | |
|------------|-------------------|-------------------------------|--|-------------|-------------------|
| PROJECT | STRUCTURE | TYPE | SPAN | OVER | STATION |
| RS-3635(3) | I24-35-6503 | CONT. R.C. SLAB | 3 - SPANS 20'-3", 25'-6", 20'-3" | BROOK CREEK | 1506+70.00 |
| SHEET NO. | SHEET DESIGNATION | SUBJECT | | | F.H.W.A. APPROVAL |
| 1 | ONE SHEET | TITLE SHEET | | | |
| 2 | ONE SHEET | TYPICAL CROSS SECTIONS | | | |
| 3 | ONE SHEET | PLAN & PROFILE | | | |
| 4 | ONE SHEET | EROSION CONTROL SHEET | | | |
| 5 | ONE SHEET | SOIL BORINGS SHEET | | | |
| 6 | ONE SHEET | LAYOUT | | | |
| 7 | ONE SHEET | GENERAL PLAN | | | |
| 8 | ONE SHEET | SITE NO. 4 | | | |
| 9 | ONE SHEET | PHYS. NO. 2 & 3 | | | |
| 10 | ONE SHEET | SUPERSTRUCTURE | | | |
| 11 | ONE SHEET | SUPERSTRUCTURE DETAILS | | | |
| 12 | ONE SHEET | BRIDGE SUMMARY | | | |
| 13 | ONE SHEET | BRIDGE ESTIMATE OF QUANTITIES | | | |
| 14-20 | SEVEN SHEETS | CROSS SECTIONS | | | |

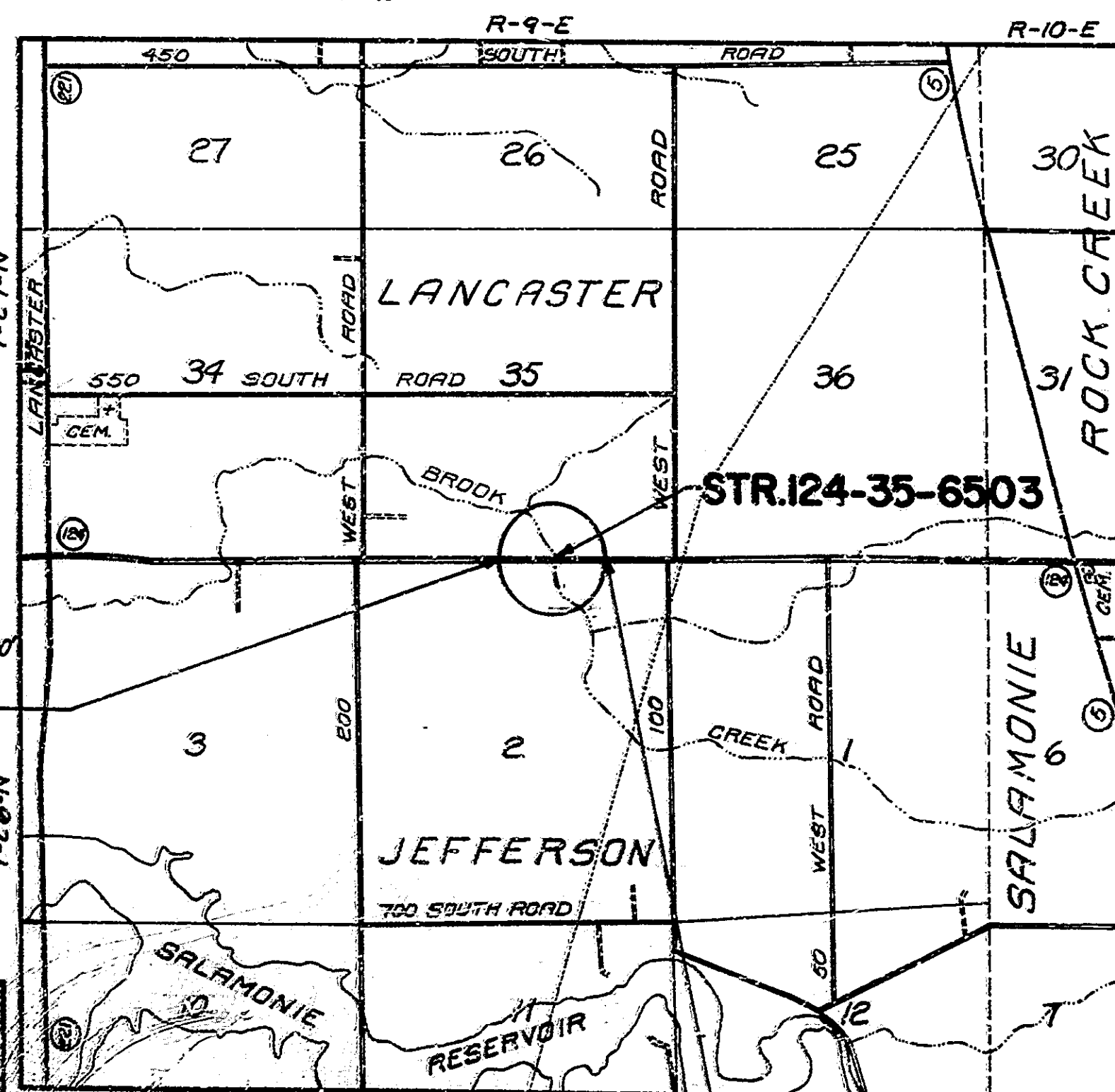
STATE OF INDIANA
INDIANA STATE HIGHWAY COMMISSION

BRIDGE PLANS FOR SPANS OVER 20 FEET ON

STATE ROAD NO. 124
PROJECT NO. ST-3635 (B) PE.
ST-3635 (B) R/W
RS-3635 (3) CONST.

BEGINNING AT THE NORTHWEST CORNER OF THE NORTHEAST QUARTER OF SECTION 2, TOWNSHIP 26 NORTH, RANGE 9 EAST, JEFFERSON TOWNSHIP, HUNTINGTON COUNTY, THENCE WEST 2 FEET ALONG THE NORTH LINE OF SECTION 2, TO A POINT WHICH IS THE WEST PROJECT LIMITS. THENCE EAST 1400 FEET ON AND ALONG THE NORTH LINE OF SECTION 2 TO A POINT, WHICH IS THE EAST PROJECT LIMITS, ALL BEING IN SECTION 2, TOWNSHIP 26 NORTH, RANGE 9 EAST, JEFFERSON TOWNSHIP AND SECTION 35, TOWNSHIP 27 NORTH, RANGE 9 EAST, LANCASTER TOWNSHIP, HUNTINGTON COUNTY, INDIANA.

BRIDGE LENGTH: 0.013 MI.
ROADWAY LENGTH: 0.252 MI.
TOTAL LENGTH: 0.265 MI.
MAX. GRADE: 2.05 %



| TRAFFIC DATA | |
|------------------------|----------------------|
| A.D.T. (1980) | 857 V.P.D. |
| A.D.T. (2004PROJECTED) | 1145 V.P.D. |
| D.H.V. (2004PROJECTED) | 105 V.P.D. |
| TRUCKS | D.H.V. 5% A.D.T. 12% |
| DESIGN SPEED | 60 M.P.H. |
| ACCESS CONTROL | NONE |

NOTE: WHENEVER "INDIANA STATE HIGHWAY COMMISSION" APPEARS IN THESE PLANS, IT SHALL BE INTERPRETED AS "INDIANA DEPARTMENT OF HIGHWAYS" EXCEPT THE 1978 INDIANA STATE HIGHWAY COMMISSION SPECIFICATION SHALL BE USED.

BEGIN PROJECT
STA. 1500+00
LINE "A"

END PROJECT
STA. 1514+00
LINE "A"

PLANS SUBMITTED FOR APPROVAL
BOYD E. PHELPS, INC.
INDIANAPOLIS & MICHIGAN CITY, INDIANA
BY *[Signature]*
DATE *June 22, 1983*



| DATE | REVISIONS SHEET NO. |
|----------|---|
| 9-2-83 | 3 |
| 10-11-84 | 1, 2, 3, 4, 5, 6, 7, 8, 9, 10, 11, 12, 13, 14, 15, 16, 17, 18, 19, 20, 21, 22, 23, 24, 25, 26, 27, 28, 29, 30, 31, 32, 33, 34, 35, 36, 37, 38, 39, 40, 41, 42, 43, 44, 45, 46 |

| DATE | REVISIONS SHEET NO. |
|------|---------------------|
| | |
| | |

INDIANA STATE HIGHWAY COMMISSION
STANDARD SPECIFICATIONS DATED 1978
TO BE USED WITH THESE PLANS.

| BRIDGES OVER 20' SPAN | | | | | |
|-----------------------|----------------------------|---|------|-------------------|------------------|
| PROJECT NO. | STATE | PROJECT NO. | YEAR | SHEET NO. | TOTAL SHEETS |
| 6 | IND. | RS-3635(3) | 19 | 1 | 46 |
| INDEX CONTINUED | | | | | |
| SHEET NO. | SHEET DESIGNATION | SUBJECT | | F.H.W.A. APPROVAL | ADOPTED REVISION |
| 21 | BRIDGE STD. BR1 | ALUMINUM BRIDGE RAILING | | | R-10-23-83 |
| 22 | BRIDGE STD. BR2 | ALUMINUM BRIDGE RAILING DETAILS | | | R-10-23-83 |
| 23 | BRIDGE STD. BR3 | STEEL BRIDGE RAILING | | 12-16-80 | R-11-3-80 |
| 24 | BRIDGE STD. BR4 | STEEL BRIDGE RAILING DETAILS | | 5-10-79 | R-12-1-78 |
| | BRIDGE STD. BR5 | RAILING CONNECTION DETAILS | | | |
| | BRIDGE STD. BR6 | RAILING CONNECTION DETAILS | | | |
| 25 | BRIDGE STD. C1 | MISCELLANEOUS DETAILS | | 12-21-81 | R-12-7-81 |
| | BRIDGE STD. C2 | MISCELLANEOUS DETAILS | | | |
| 26 | BRIDGE STD. C3 | MISCELLANEOUS DETAILS | | 12-21-81 | R-12-7-81 |
| | BRIDGE STD. C4 | MISCELLANEOUS DETAILS | | | |
| | BRIDGE STD. D | CASTING DETAILS ROADWAY DRAINS | | | |
| | BRIDGE STD. | | | | |
| | BRIDGE STD. PB | PRESTRESSED CONCRETE TYPE I-BEAMS | | | |
| | BRIDGE STD. PB | PRESTRESSED CONCRETE TYPE I-BEAMS | | | |
| | BRIDGE STD. PB | PRESTRESSED BOX BEAMS | | | |
| | BRIDGE STD. PB | PRESTRESSED COMPOSITE BOX BEAMS WIDE | | | |
| | BRIDGE STD. PB | PRESTRESSED COMPOSITE BOX BEAMS WIDE | | | |
| | BRIDGE STD. PB10 | TOLERANCES FOR FABRICATION OF PRESTRESSED BEAMS | | | |
| | BRIDGE STD. PB11 | ELASTOMERIC BEARING PAD DETAILS | | | |
| | BRIDGE STD. | | | | |
| | BRIDGE STD. R2A | BRIDGE LIGHTING DETAILS | | | |
| | BRIDGE STD. R2B | BRIDGE LIGHTING DETAILS | | | |
| 27 | BRIDGE STD. S1 | MISCELLANEOUS DETAILS | | 1-17-72 | R-8-2-71 |
| | BRIDGE STD. SH1 | STEEL SHOE DETAILS | | | |
| | BRIDGE STD. T SHEET A | STANDARD TEMPORARY BRIDGE | | | |
| | BRIDGE STD. T SHEET B | STANDARD TEMPORARY BRIDGE | | | |
| | BRIDGE STD. | | | | |
| | BRIDGE STD. | | | | |
| | BRIDGE STD. | | | | |
| | BRIDGE STD. | | | | |
| | BRIDGE STD. | | | | |
| 28 | ROAD STD. SHEET A | STANDARD PAVEMENT JOINTS | | 4-10-84 | R-9-4-84 |
| | ROAD STD. SHEET B | STANDARD PAVEMENT JOINTS | | | |
| 29 | ROAD STD. SHEET MA | MISCELLANEOUS STANDARDS | | * | R-9-4-84 |
| | ROAD STD. SHEET MB | MISCELLANEOUS STANDARDS | | | |
| 30 | ROAD STD. SHEET MA | MISCELLANEOUS STANDARDS | | * | R-9-4-84 |
| | ROAD STD. SHEET MB | MISCELLANEOUS STANDARDS | | | |
| | ROAD STD. SHEET MC | MISCELLANEOUS STANDARDS | | | |
| | ROAD STD. SHEET MD | MISCELLANEOUS STANDARDS | | | |
| | ROAD STD. SHEET ME | MISCELLANEOUS STANDARDS | | | |
| | ROAD STD. SHEET MF | MISCELLANEOUS STANDARDS | | | |
| | ROAD STD. SHEET MG | MISCELLANEOUS STANDARDS | | | |
| | ROAD STD. SHEET MH | MISCELLANEOUS STANDARDS | | | |
| | ROAD STD. SHEET MI | MISCELLANEOUS STANDARDS | | | |
| | ROAD STD. SHEET MJ | MISCELLANEOUS STANDARDS | | | |
| | ROAD STD. SHEET MK | MISCELLANEOUS STANDARDS | | | |
| | ROAD STD. SHEET ML | MISCELLANEOUS STANDARDS | | | |
| | ROAD STD. SHEET MM | MISCELLANEOUS STANDARDS | | | |
| | ROAD STD. SHEET MN | MISCELLANEOUS STANDARDS | | | |
| | ROAD STD. SHEET MO | MISCELLANEOUS STANDARDS | | | |
| | ROAD STD. SHEET MP | MISCELLANEOUS STANDARDS | | | |
| | ROAD STD. SHEET MQ | MISCELLANEOUS STANDARDS | | | |
| | ROAD STD. SHEET MR | MISCELLANEOUS STANDARDS | | | |
| | ROAD STD. SHEET MS | MISCELLANEOUS STANDARDS | | | |
| | ROAD STD. SHEET MT | MISCELLANEOUS STANDARDS | | | |
| | ROAD STD. SHEET MU | MISCELLANEOUS STANDARDS | | | |
| | ROAD STD. SHEET MV | MISCELLANEOUS STANDARDS | | | |
| | ROAD STD. SHEET MW | MISCELLANEOUS STANDARDS | | | |
| | ROAD STD. SHEET MX | MISCELLANEOUS STANDARDS | | | |
| | ROAD STD. SHEET MY | MISCELLANEOUS STANDARDS | | | |
| | ROAD STD. SHEET MZ | MISCELLANEOUS STANDARDS | | | |
| | ROAD STD. SHEET NA | STANDARD REINFORCED CONCRETE BOX CULVERTS | | | |
| | ROAD STD. SHEET NB | STANDARD REINFORCED CONCRETE CULVERTS | | | |
| | ROAD STD. SHEET NC | GUARD RAIL CLASS | | | |
| | ROAD STD. SHEET ND | GUARD RAIL CLASS | | | |
| 35 | ROAD STD. SHEET GR4 | GUARD RAIL CLASS "G" | | * | R-4-2-84 |
| 36 | ROAD STD. SHEET GR5 | ALUMINUM GUARD RAIL DETAILS | | 5-21-82 | R-4-1-82 |
| 37 | ROAD STD. SHEET GR6 | STEEL TUBE GUARD RAIL DETAILS | | 5-21-82 | R-4-1-82 |
| | ROAD STD. SHEET GR | | | | |
| 38 | ROAD STD. SHEET GR10 | GUARD RAIL MOUNTED ENDS | | 5-21-82 | R-4-1-82 |
| 39 | ROAD STD. SHEET CR2 | TEMPORARY CONCRETE BARRIERS | | * | R-4-1-84 |
| 40 | ROAD STD. | | | | |
| 41 | ROAD STD. SHEET 1 DETOURS | STANDARD DETOUR SIGNS | | * | R-4-1-84 |
| | ROAD STD. SHEET 2 DETOURS | STANDARD DETOUR SIGNS | | | |
| | ROAD STD. SHEET 3 DETOURS | STANDARD DETOUR SIGNS | | | |
| 42 | ROAD STD. SHEET 2 DETOURS | STANDARD DETOUR SIGNS | | 4-10-84 | R-2-1-84 |
| 43 | ROAD STD. SHEET 2A DETOURS | STANDARD DETOUR SIGNS | | 4-10-84 | R-2-1-84 |
| 44 | ROAD STD. SHEET 3 DETOURS | STANDARD DETOUR SIGNS | | 4-10-84 | R-2-1-84 |
| | ROAD STD. SHEET 4 DETOURS | STANDARD DETOUR SIGNS | | | |
| 45 | ROAD STD. SHEET 5 DETOURS | STANDARD DETOUR SIGNS | | 12-8-83 | R-10-3-83 |
| 46 | ROAD STD. SHEET 5A DETOURS | STANDARD DETOUR SIGNS | | 4-10-84 | R-2-1-84 |

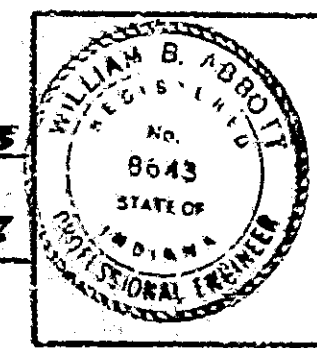
* PENDING F.H.W.A. APPROVAL

APPROVED: 9-1-83

[Signature]
CHIEF HIGHWAY ENGINEER

RECOMMENDED FOR APPROVAL: 8-25-83

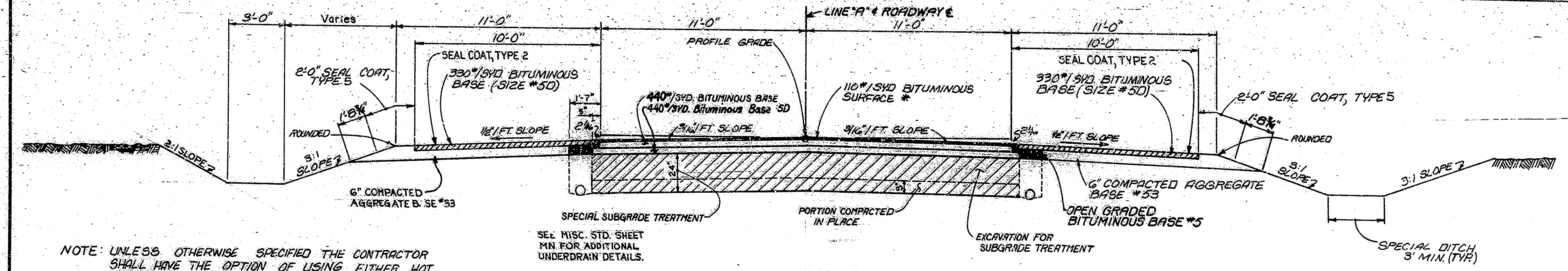
[Signature]
ENGINEER OF BRIDGE DESIGN



FEDERAL HIGHWAY ADMINISTRATION
DEPARTMENT OF TRANSPORTATION
APPROVED: _____
DIVISION ADMINISTRATOR DATE

BRIDGE FILE: I24-35-6503

| FEDERAL ROAD DISTRICT NO. | STATE | PROJECT NO. | PACEL YEAR | SHEET NO. | TOTAL SHEETS |
|---------------------------|-------|-------------|------------|-----------|--------------|
| IND. | IN. | RS-3635(1) | | 2 | 46 |

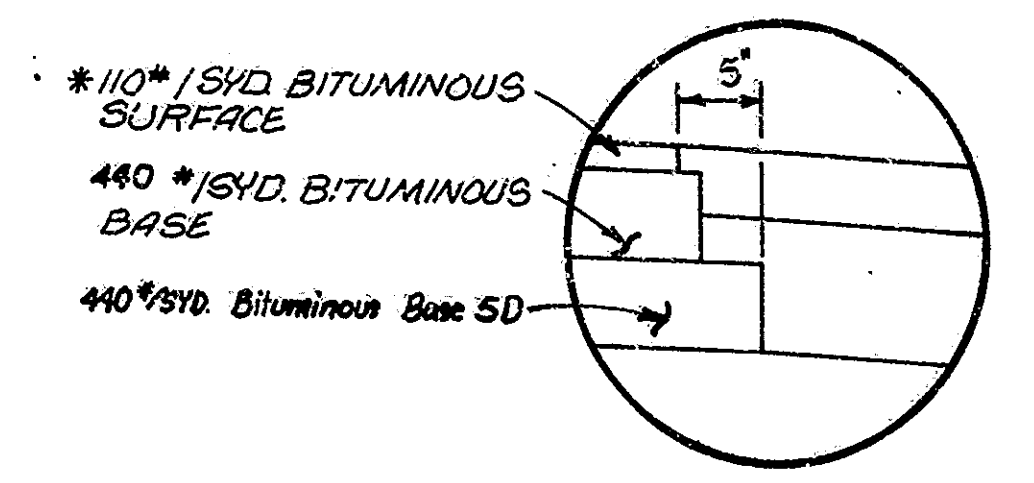


NOTE: UNLESS OTHERWISE SPECIFIED THE CONTRACTOR SHALL HAVE THE OPTION OF USING EITHER HOT ASPHALT CONCRETE (H.A.C.) OR HOT ASPHALT EMULSION (H.A.E.) ON ALL BITUMINOUS ITEMS EXCEPT SURFACE

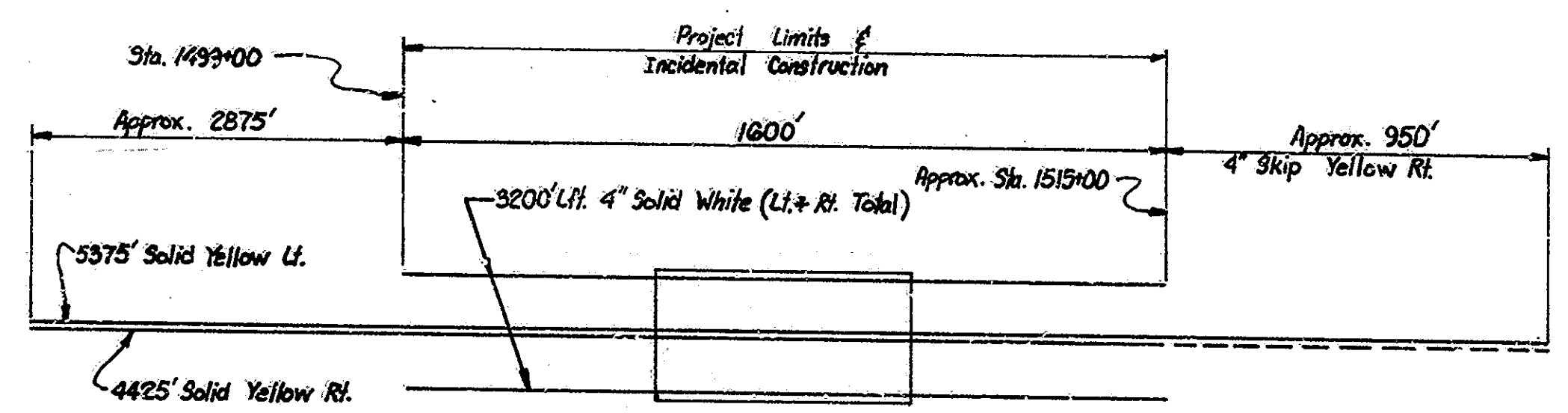
SEED MIXTURE "CV" TO BE USED ON ALL SLOPES 3:1 OR STEEPER.

TYPICAL CROSS SECTION
SCALE: 3/8" = 1'-0"

STA. 1500+00.00 TO STA. 1506+15.75
STA. 1507+24.25 TO STA. 1514+00.00



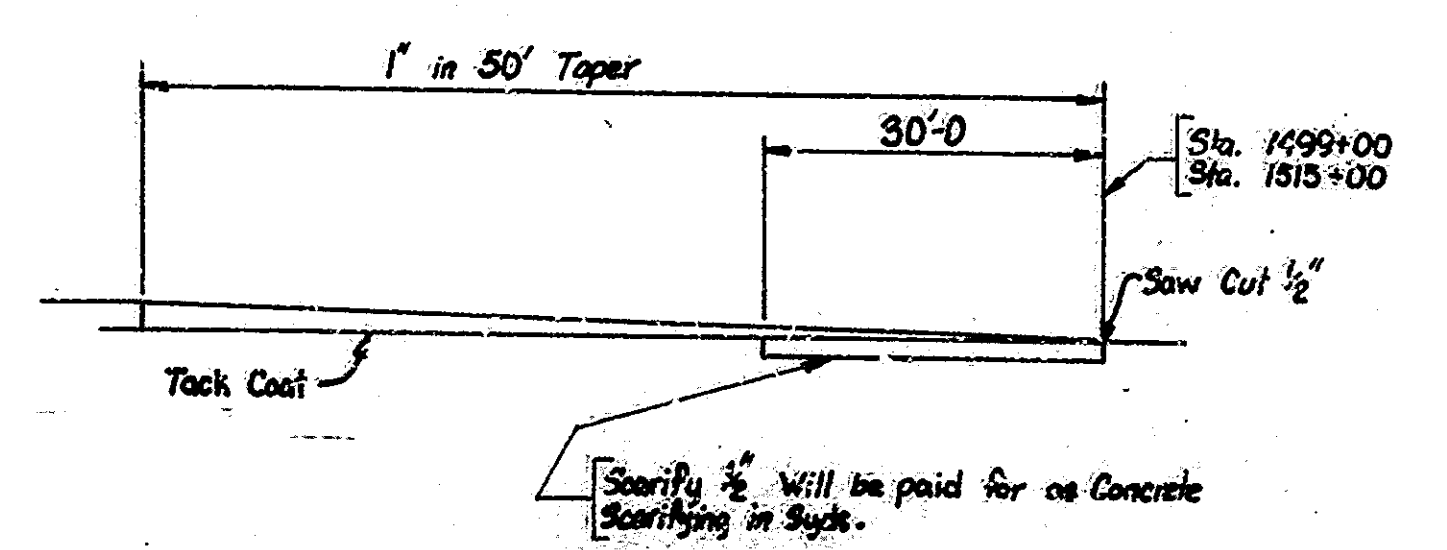
EDGE OF PAVEMENT DETAIL
SCALE: 1 1/2" = 1'-0"
* H.A.C., TYPE 11B



Note: The 4' Solid & Skip Yellow Lines are intended to extend to a break in the existing striping
PAVEMENT MARKING DETAIL
NO SCALE

| STA. TO STA. | L. R. | LENGTH GROUP K' | LENGTH F.B.C.C.S. | OUTLET STATION | REMARKS | DELINEATOR POST No. | LOCATION |
|--------------------|-------|-----------------|-------------------|----------------|---------|---------------------|----------|
| 1500+00 TO 1506+15 | ✓ | 615 | 30 | 1506+15 | | 1 | 1506+15 |
| 1500+00 TO 1506+15 | ✓ | 615 | 26 | 1506+15 | | 1 | 1506+15 |
| 1507+25 TO 1514+00 | ✓ | 675 | 26 | 1507+25 | | 1 | 1507+25 |
| 1507+25 TO 1514+00 | ✓ | 675 | 26 | 1507+25 | | 1 | 1507+25 |

| STA. TO STA. | LEFT | | RIGHT | | TYPE |
|-----------------------------|------|------|-------|------|------------------------------|
| | LET. | LET. | LET. | LET. | |
| 1515+00 TO 1524+50 | | | 240 | | 4' SKIP YELLOW STRIPING |
| 1499+00 TO 1515+00 | 1600 | | 1600 | | 4' SOLID WHITE EDGE STRIPING |
| SEE PAVEMENT MARKING DETAIL | | | 9800 | | 4' SOLID YELLOW STIPING |



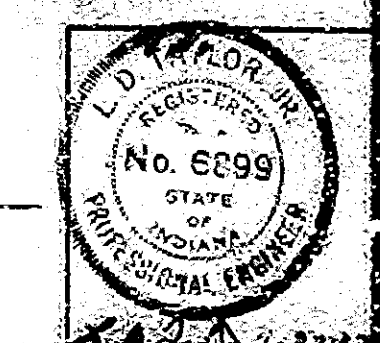
WEDGE & LEVEL DETAIL
NO SCALE

| STATION | Q | TYPE |
|----------|---|------|
| LINE "A" | | |
| 1500+02 | ✓ | * |
| 1500+77 | ✓ | * |

* SECTION CORNER MONUMENTS
NOTE: SECTION CORNER MONUMENTS TO BE CONSTRUCTED ONLY WHEN REMOVING AN EXISTING ESTABLISHED CORNER

TYPICAL CROSS SECTIONS

SCALE: AS SHOWN



Ref. 10-11-24 Bituminous Base Scarifying Detail, Pav. Striping Detail

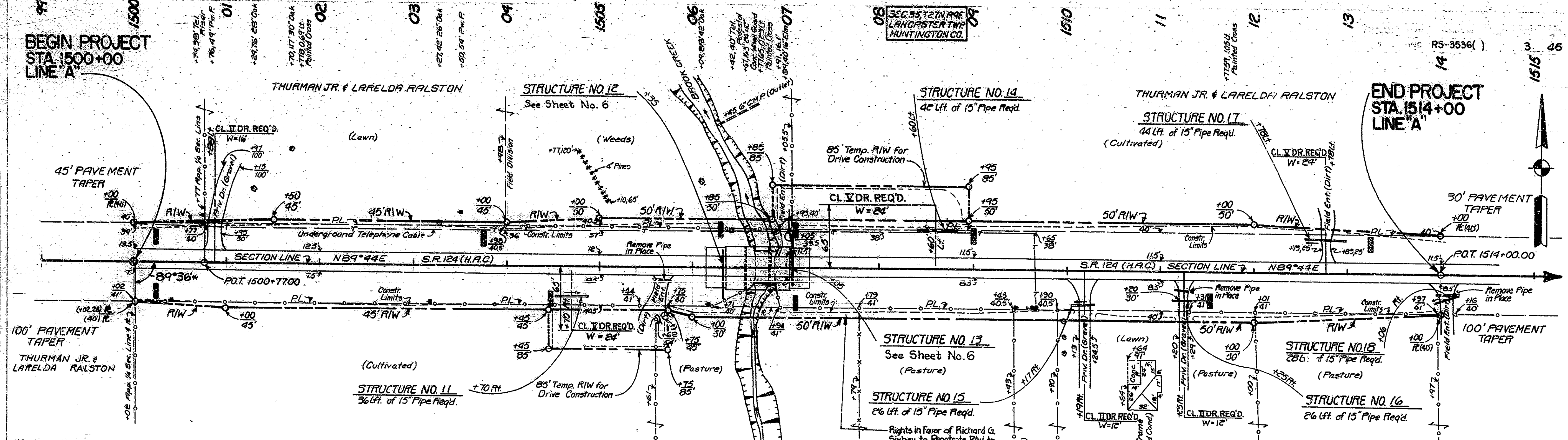
1/4 SECTION CORNER MONUMENT
REQD. STA. 1500+02.00

1/4 SECTION CORNER MONUMENT
REQD. STA. 1500+77.00

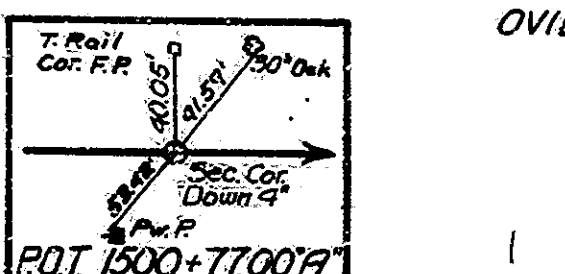
BEGIN PROJECT
STA. 1500+00
LINE "A"

END PROJECT
STA. 1514+00
LINE "A"

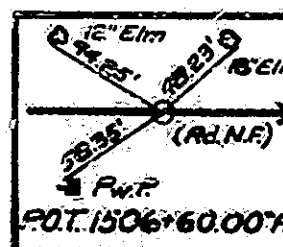
PLAN
SHEET NO. 8018 & 8019
NO. 8018
NO. 8019



* 89°36' AS FENCED, NO COUNTY RECORD OF STONE EVER BEING LOCATED. USED FENCE CORNER ± 1/2 MILE SOUTH.

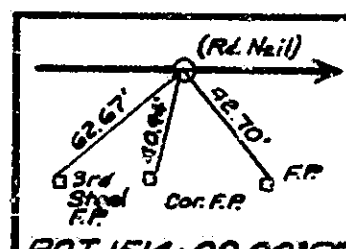


EROSION CONTROL METHOD "A"



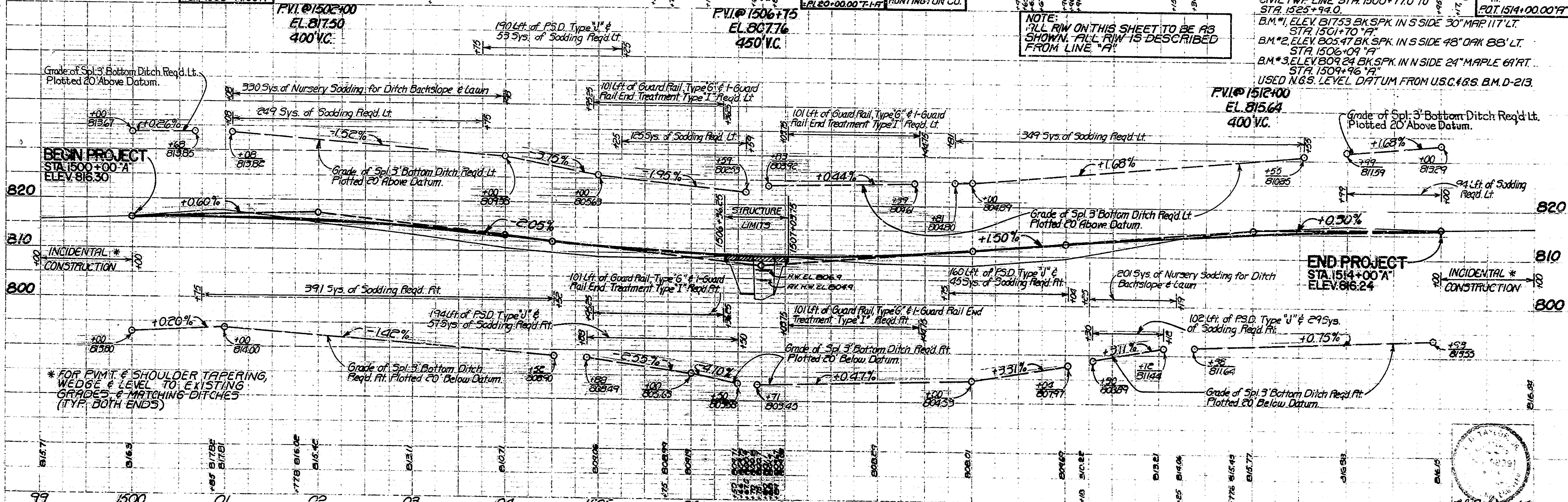
NOTE: ALL R/W ON THIS SHEET TO BE AS SHOWN. ALL R/W IS DESCRIBED FROM LINE "A"

OVID L. & ESTHER M. LAHR
NOTE: STA. 1527+25 APP. S.E. COR. SEC. 35, P.O.T. 1525+94, SEC. COR. MON. DOWN 8', N.E. COR. SEC. 2

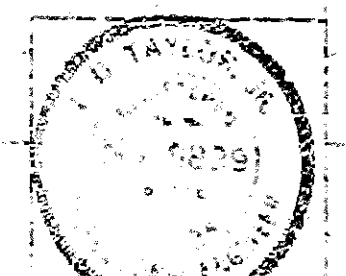


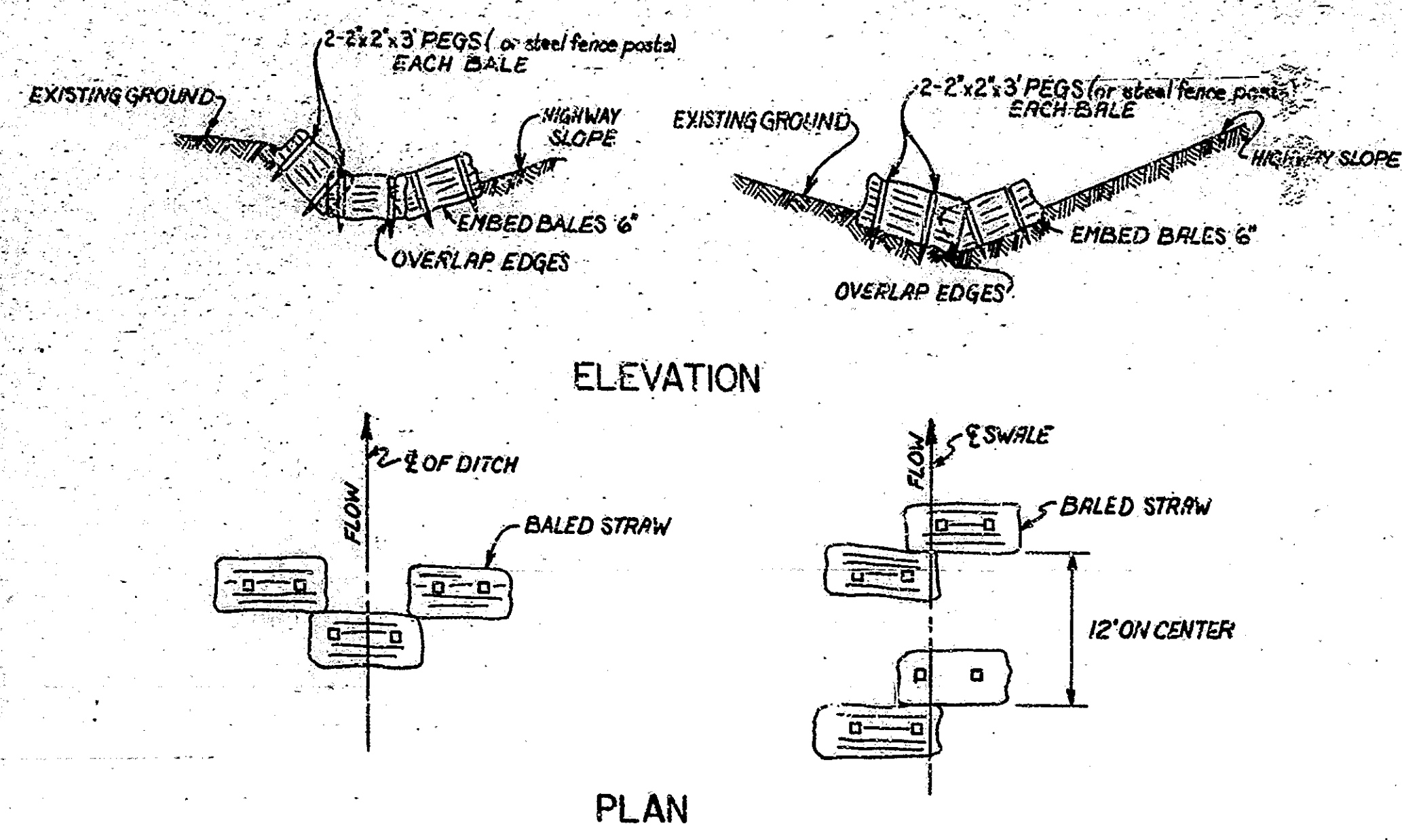
LINE "A" IS ON E & W SEC. 00 & 01 CIVIL TWP LINE STA. 1500+77.00 TO STA. 1525+94.0.
B.M. #1, ELEV. 817.53 BK. SPK. IN S. SIDE 30' MAPLE 117' LT. STA. 1501+70' "A"
B.M. #2, ELEV. 805.47 BK. SPK. IN S. SIDE 48' DARK 88' LT. STA. 1506+09' "A"
B.M. #3, ELEV. 809.24 BK. SPK. IN N. SIDE 24' MAPLE 61' RT. STA. 1509+96' "A"
USED N.G.S. LEVEL DATUM FROM U.S.C. & G.S. B.M.D.-213.

PROFILE
SHEET NO. 8018 & 8019
NO. 8018
NO. 8019

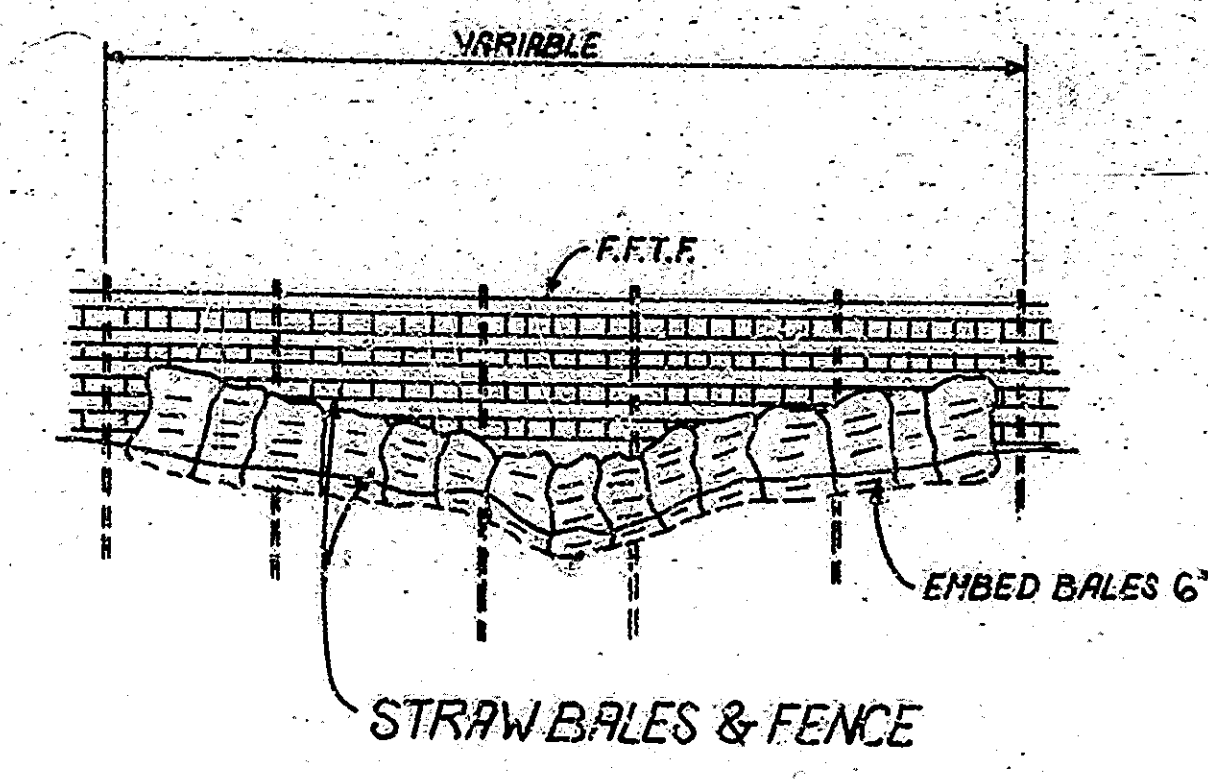


* FOR P.V.M.T. & SHOULDER TAPERING, WEDGES & LEVEL TO EXISTING GRADES & MATCHING DITCHES (TYP. BOTH ENDS)

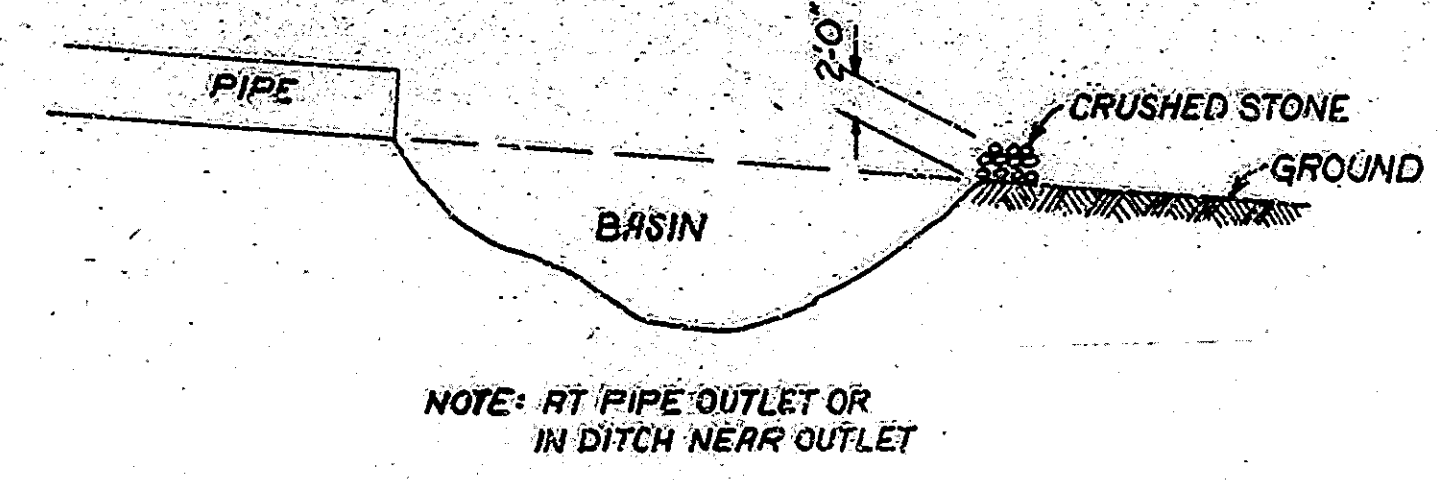




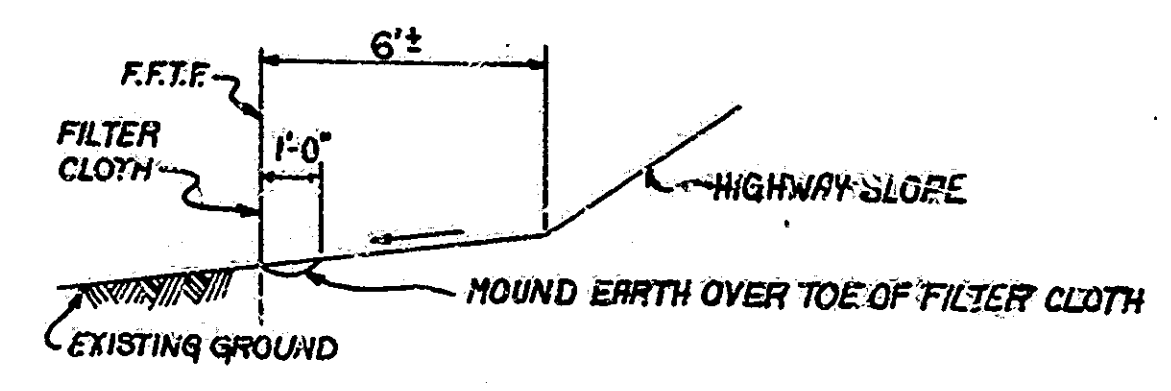
METHOD A



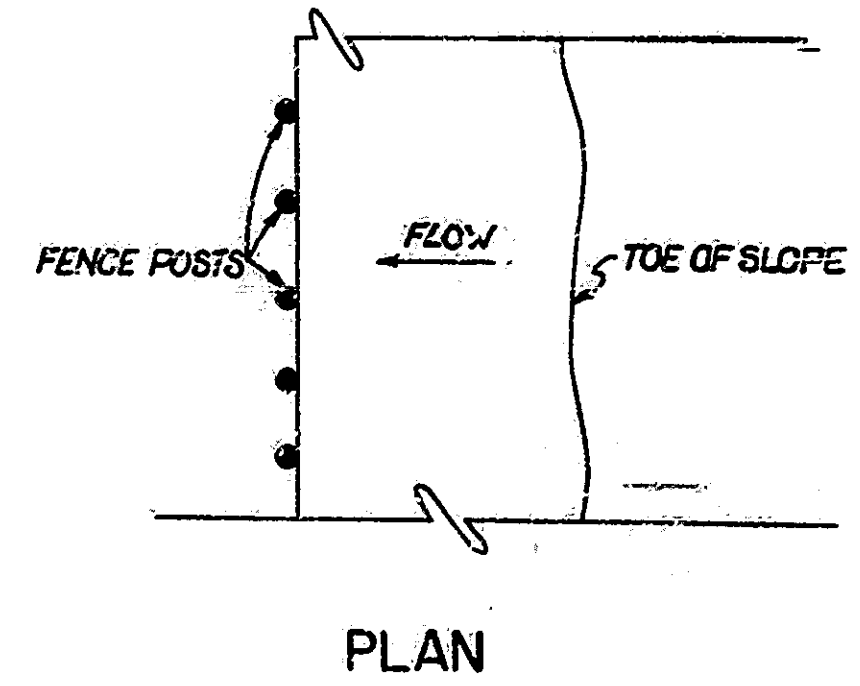
METHOD B



METHOD D

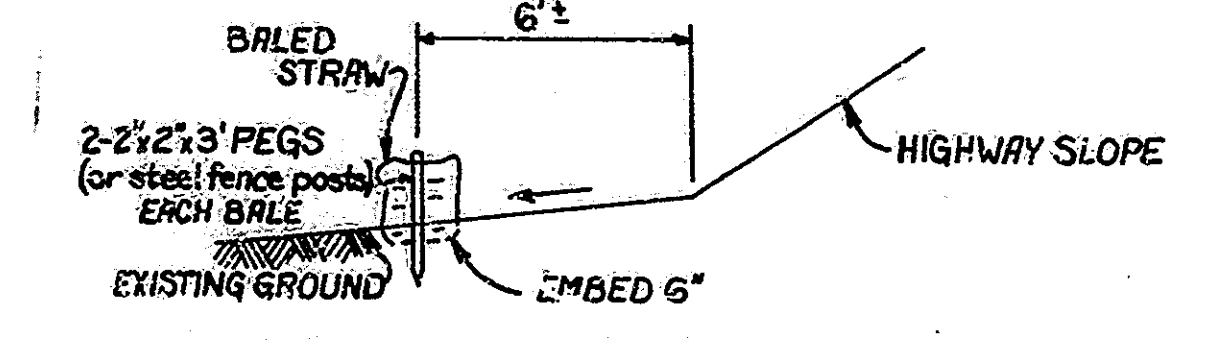


ELEVATION

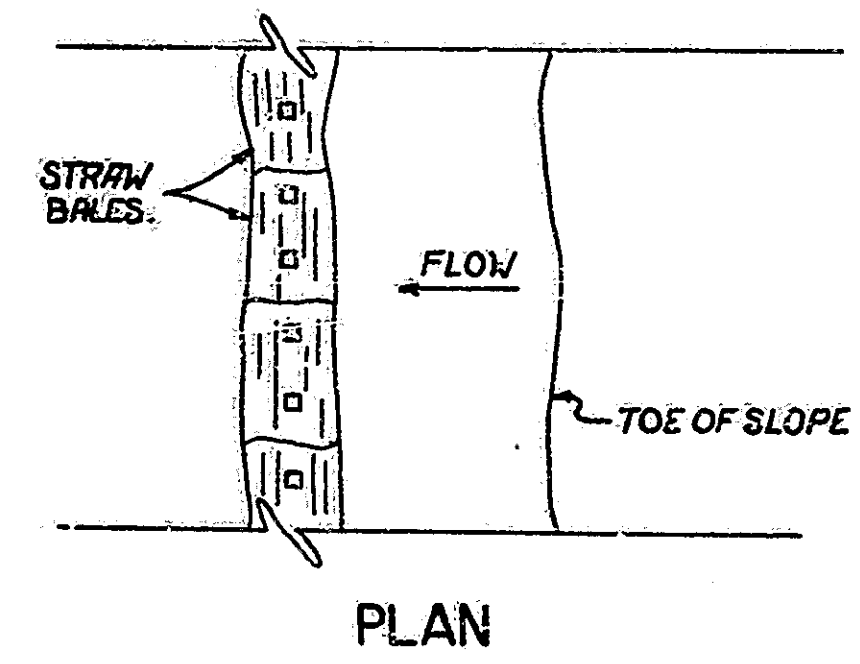


PLAN

METHOD C



ELEVATION



PLAN

METHOD E

| TABLE OF QUANTITIES | | | | | | |
|---------------------|------|--------|------|------|------|-------|
| LOCATIONS | SIZE | METHOD | | | | |
| | | A | B | C | D | E |
| STATION, OFFSET | FEET | BALES | LFT. | LFT. | EACH | BALES |
| LINE "A" | | | | | | |
| 1500+25, LT. | | 3 | | | | |
| 1500+25, RT. | | 3 | | | | |
| 1503+75, LT. | | 3 | | | | |
| 1504+50, RT. | | 3 | | | | |
| 1506+30, LT. | | 3 | | | | |
| 1507+07, LT. | | 3 | | | | |
| 1507+07, RT. | | 3 | | | | |
| 1509+00, LT. | | 3 | | | | |
| 1511+50, RT. | | 3 | | | | |
| 1513+25, LT. | | 3 | | | | |
| | | | | | | |
| | | | | | | |
| | | | | | | |
| | | | | | | |

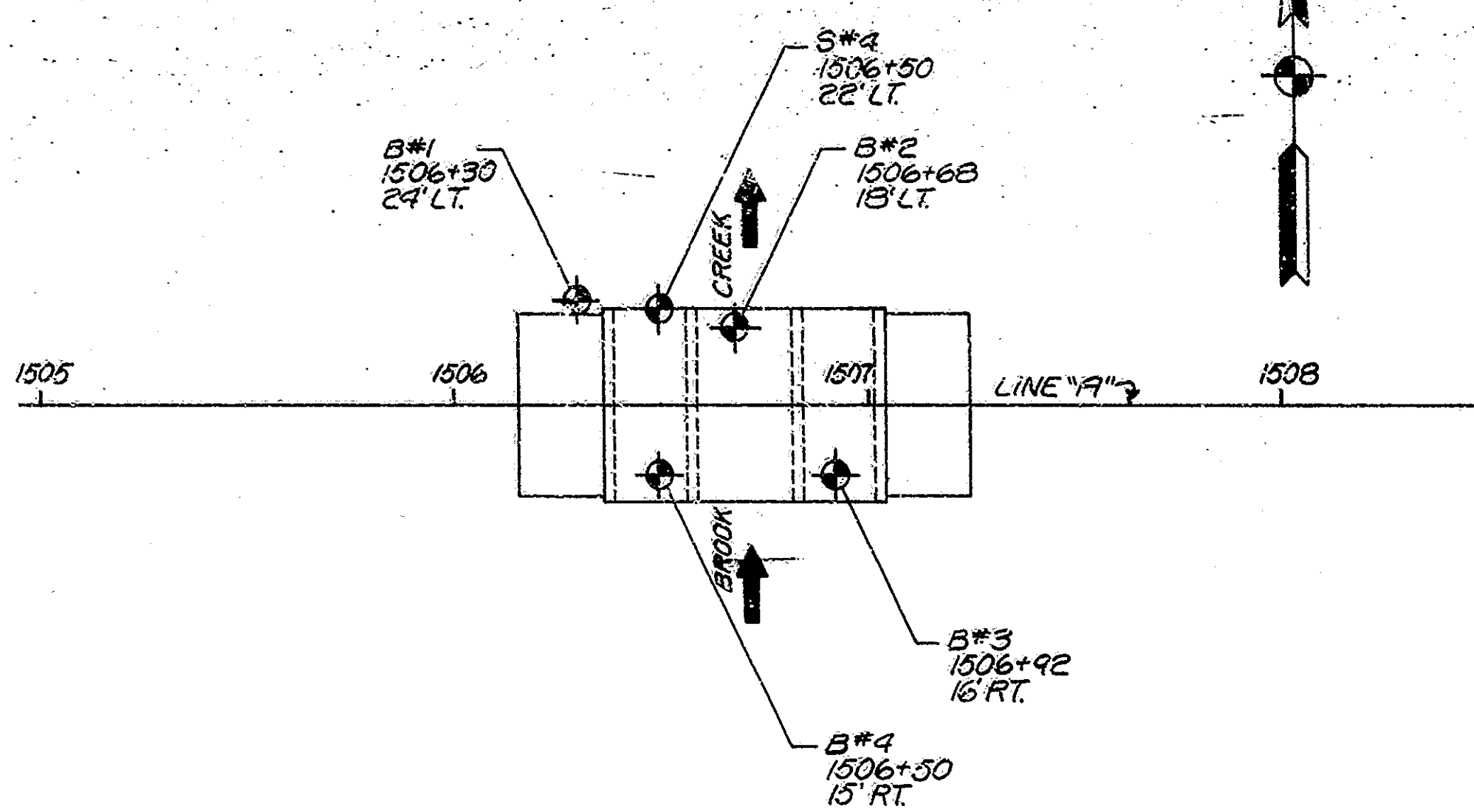
PRY ITEMS
 METHOD A "STRAW BALES IN PLACE" EACH
 METHOD B "EROSION CONTROL METHOD B" LFT.
 METHOD C "EROSION CONTROL METHOD C" LFT.
 METHOD D "EROSION CONTROL METHOD D" EACH
 METHOD E "STRAW BALES IN PLACE" EACH

EROSION CONTROL
INDIANA DEPARTMENT OF HIGHWAYS

SCALE:- DATE: June 22, 1983

DRAWING OF SHEET 4 OF 48
 PROJECT: RS-3635(3)
 CONTRACT NO: B-15068
 BRIDGE FILE: 124-35-6503





NOTES:
 ◆ BORING LOCATION
 "N" INDICATES NUMBER OF BLOWS REQUIRED TO DRIVE A O.D. SPLIT SPOON SAMPLER TO A DEPTH OF 6" BY A 140 LB. HAMMER FALLING 30 INCHES.
 ▼ GROUND WATER TABLE

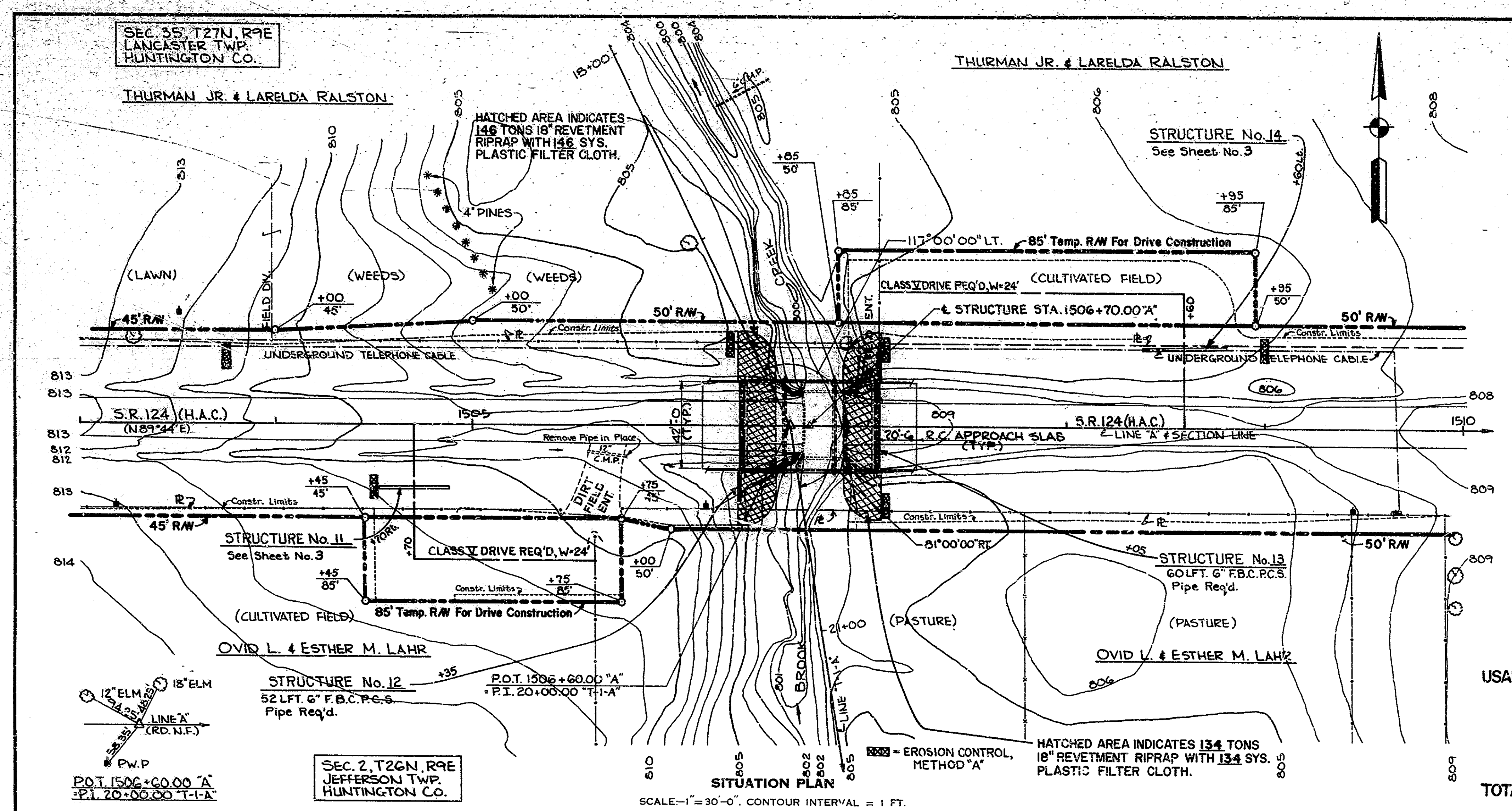
PLAN: SECTION
 NOTE BOOK
 NO. 1000000000

| BORING NO. | B*1 | | | S*4 | | | B*2 | | | B*3 | | | B*4 | | |
|--------------|---------------------|-------|-------|---------------------|-------|-------|---------------------|-------|-------|---------------------|-------|-------|---------------------|-------|-------|
| STATION | 1506+30 "A" | | | 1506+50 "A" | | | 1506+68 "A" | | | 1506+92 "A" | | | 1506+50 "A" | | |
| OFFSET | 24' LT. | | | 22' LT. | | | 18' LT. | | | 16' RT. | | | 15' RT. | | |
| GROUND ELEV. | 806.2 | | | 806.2 | | | 805.8 | | | 808.7 | | | 808.4 | | |
| 810 | SURFACE ELEVATION 7 | | | SURFACE ELEVATION 7 | | | SURFACE ELEVATION 7 | | | SURFACE ELEVATION 7 | | | SURFACE ELEVATION 7 | | |
| | NO. | ELEV. | "N" | NO. | ELEV. | "N" | NO. | ELEV. | "N" | NO. | ELEV. | "N" | NO. | ELEV. | "N" |
| 805 | 1 | 803.7 | 3.6 | 1 | 803.7 | 3.6 | 1 | 803.7 | 3.6 | 1 | 803.7 | 3.6 | 1 | 803.7 | 3.6 |
| | 2 | 801.2 | 3.5 | 2 | 801.2 | 3.5 | 2 | 801.2 | 2.9 | 2 | 801.2 | 2.9 | 2 | 801.2 | 2.9 |
| 800 | 3 | 798.7 | 16.20 | 3 | 798.7 | 16.20 | 3 | 798.7 | 16.20 | 3 | 798.7 | 16.20 | 3 | 800.9 | 11.16 |
| | 4 | 796.2 | 9.82 | 4 | 796.2 | 9.82 | 4 | 795.8 | 11.16 | 4 | 798.4 | 6.15 | 4 | 798.4 | 6.15 |
| 795 | | | | 793.7 | | | | | | 5 | 793.4 | 13.16 | 5 | 793.4 | 13.16 |
| 790 | IRC | | | | | | IRC | | | IRC | | | IRC | | |
| | 788.7 | | | | | | 788.3 | | | 788.2 | | | 792.9 | | |
| 785 | | | | | | | | | | | | | | | |

PROFILE: SECTION
 NOTE BOOK
 NO. 1000000000

SOIL BORINGS
 SCALE: 1"=30' HORIZ., 1"=5' VERT.
 SUBMITTED FOR APPROVAL
 S. B. [Signature] 6-2-53

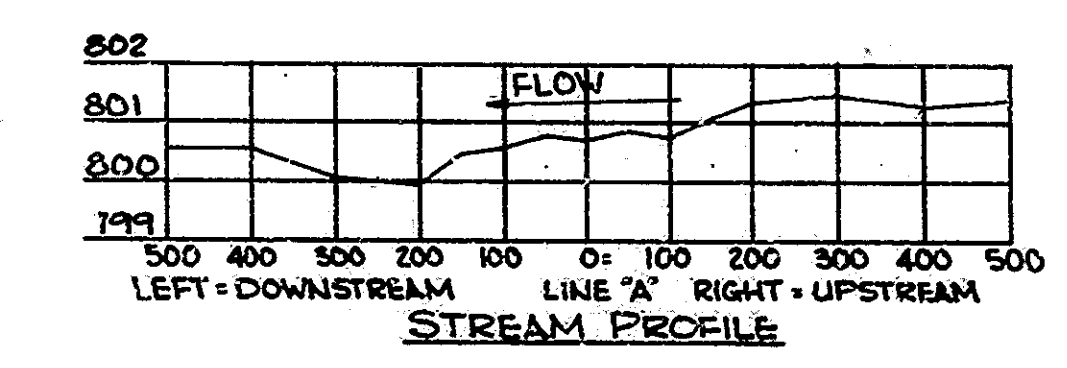
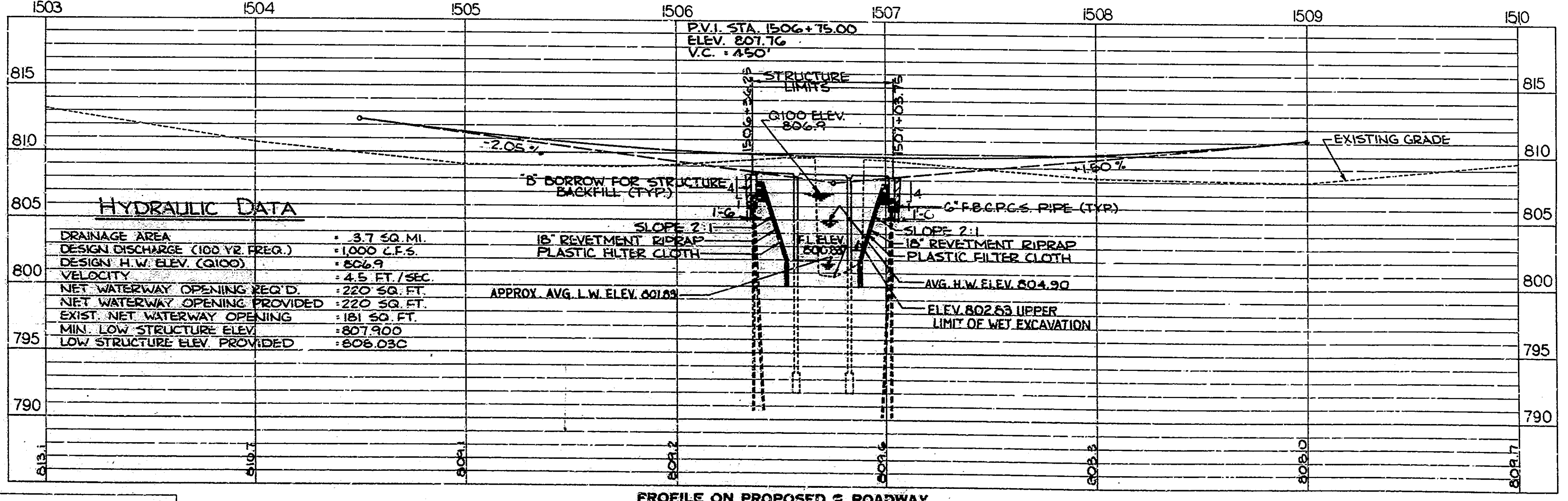
5/13/83
6/6/83



UTILITIES
ELECTRICITY: UNITED R.E.M.C.
P.O. BOX 739
S.R. 5 SOUTH
HUNTINGTON, IND. 46750
TELEPHONE: MID-INDIANA TELEPHONE CORP.
121 E. MILL ST.
OSSIAN, IND. 46777
622-4144

EARTHWORK TABULATION

| | |
|--|-----------------|
| FILL + 25% | 4,221 CYS. |
| COMMON EXCAVATION | 3,406 |
| USABLE WATERWAY EXCAVATION (70%) | 292 |
| BORROW | 523 |
| NOTE: Above Tabulation Does Not Include "Excavation For Subgrade Treatment," However This Item Is Estimated To Be 600 CYS. | |
| TOTAL WATERWAY EXCAVATION | 417 CYS. |



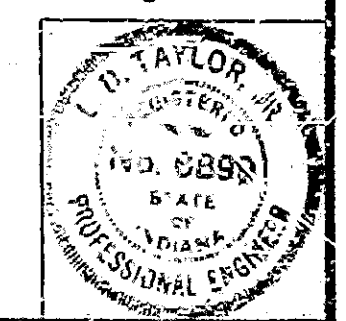
EXISTING STRUCTURE
30' PRECAST CONCRETE BEAM STRUCTURE
1 SPAN @ 22'-6", 33.8' OUT TO OUT COPING,
NO SKEW

LAYOUT
CONTINUOUS REINFORCED CONCRETE SLAB BRIDGE
3 SPANS: 1 @ 20'-3", 1 @ 25'-6", 1 @ 20'-3"
NO SKEW
S.R. 124 OVER BROOK CREEK
42'-0" CL. ROADWAY

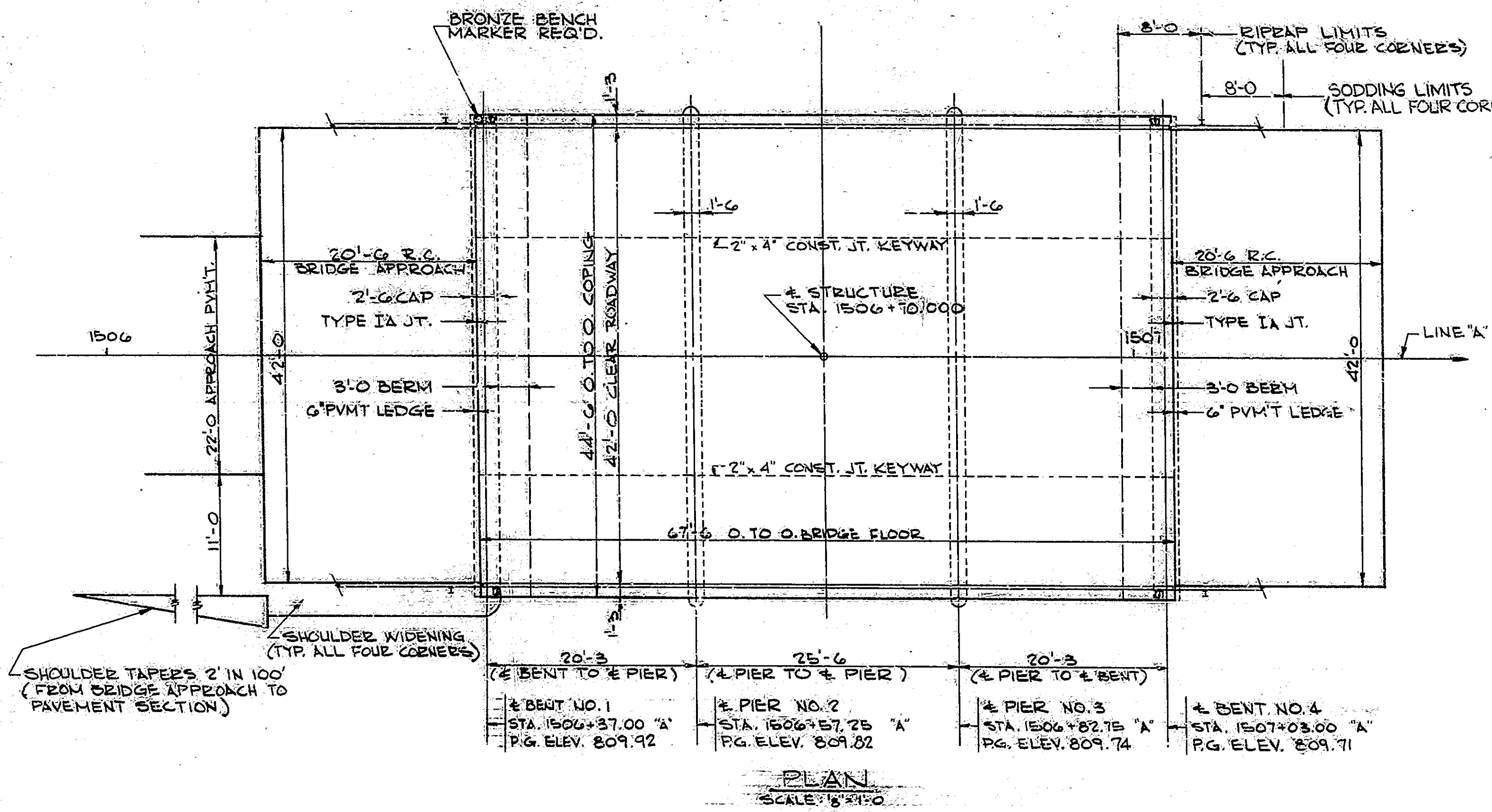
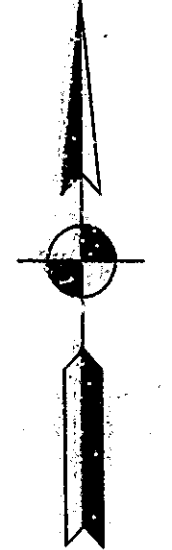
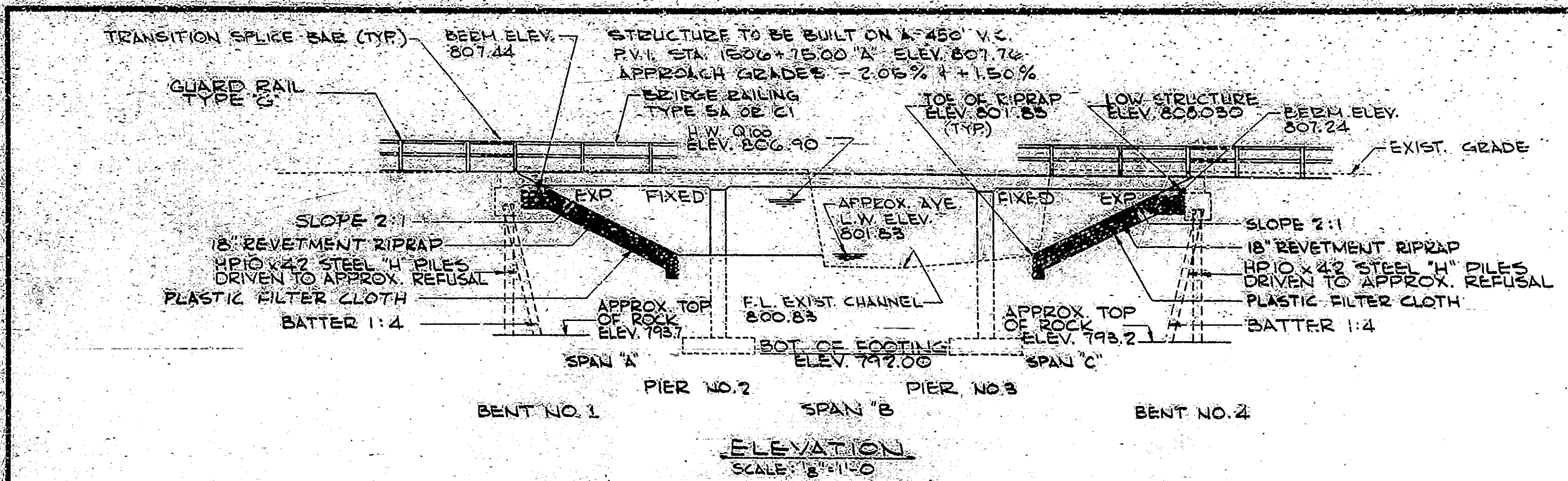
INDIANA DEPARTMENT OF HIGHWAYS
HUNTINGTON COUNTY
SCALE: AS NOTED
DATE: June 22, 1983
SUBMITTED FOR APPROVAL: [Signature]
DRAWING: C1 OF C6 SHEET: 6 OF 46
PROJECT: RS-3635(3) STATION: -
BRIDGE CONTRACT NO. B-15068
BRIDGE FILE: 124-35-6503

DRAWN: CKD
DESIGNED: CVD
TRACED: CKD

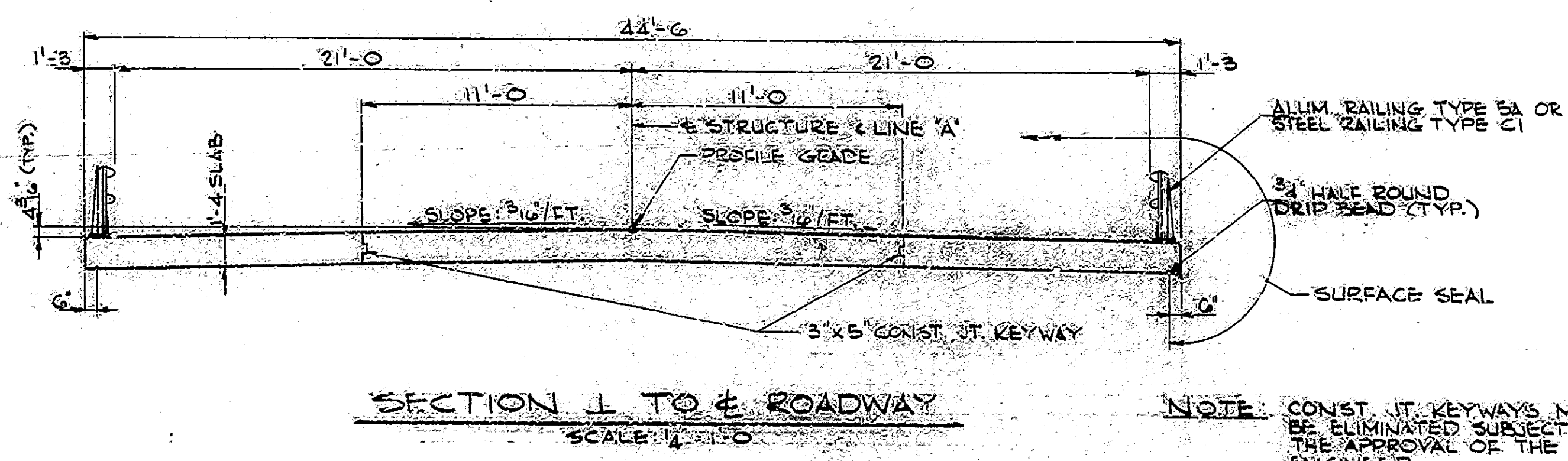
PROFILE ON PROPOSED ROADWAY
SCALE: HORIZ. 1" = 30'-0" VERT. 1" = 5'-0"
NOTE: FIELD NOTES, BOOK BR-2547
REV. 10-11-84 Earthwork Tabulation



5/2/82 S.F.
 10/3/82 S.F.
 5/19/83 S.F.
 6/1/83
 6/6/83



NOTE:
 TOP LAYER OF REINFORCING STEEL IN SUPERSTRUCTURE SLAB TO BE EPOXY COATED



NOTE: CONST. JT. KEYWAYS MAY BE ELIMINATED SUBJECT TO THE APPROVAL OF THE ENGINEER.

GENERAL NOTES

- FOOTINGS SHALL EXTEND MINIMUM OF 6' INTO SOLID ROCK.
- REINFORCING STEEL NOT TO BE ORDERED UNTIL ROCK IS UNCOVERED.
- DETERMINE PILE LENGTHS BY SECTION 701 OF SPECIFICATIONS.
- DEPTH OF FOOTINGS TO BE EXTENDED IF FOUND NECESSARY. SEE ARTICLE 206.11(C) OF SPECIFICATIONS.
- REINFORCING STEEL COVERING SHALL BE 2 1/2" IN TOP AND 1" MIN. IN BOTTOM OF FLOOR SLABS, 3" IN FOOTING EXCEPT BOTTOM STEEL WHICH SHALL BE 4" AND 2" IN ALL OTHER PARTS, UNLESS NOTED.
- CONCRETE IN FOOTINGS TO BE CLASS 'B'.
- CONCRETE IN SUPERSTRUCTURE TO BE CLASS 'C'.
- CONCRETE IN END BENTS, PIER STEMS, AND PAVED SIDE DITCHES TO BE CLASS 'A'.
- CONTINUOUS CONCRETE POURS SHALL BE REQUIRED BETWEEN CONSTRUCTION JOINTS AS SHOWN IN DETAIL PLANS.
- WATERPROOF BACK OF END BENTS IN ACCORDANCE WITH ARTICLE 102.22 OF THE SPECIFICATIONS. CHAMFER EXPOSED EDGES 1" UNLESS NOTED.
- CONSTRUCT 18" REVETMENT RIPRAP AT LOCATIONS SHOWN ON LAYOUT.
- TOLERANCE IN POSITION OF PILE HEAD MAXIMUM 2".
- ONLY THE TOP OF PILES, TOP OF BRIDGE DECK, END BENT CAPS, FACE OF DECK COPING AND UNDERSIDE OF THE BRIDGE FLOOR FROM COPING TO DRIP BEAD TO BE SEALED.

DESIGN DATA

DESIGNED FOR HS20-44 LOADING IN ACCORDANCE WITH 1977 A.A.S.H.T.O. SPECIFICATIONS INCLUDING 1978-1981 INTERIM SPECIFICATIONS.
 UNIT STRESSES: $f_c = 20,000$ P.S.I.
 $f_t = 1,200$ P.S.I.

STANDARD DRAWINGS

| BR STD. | RD STD. | PURPOSE |
|---------|---------|---|
| BR1 | | ALUMINUM BRIDGE RAILING TYPE 5A |
| BR2 | | ALUMINUM BRIDGE RAILING DETAILS |
| BR3 | | STEEL BRIDGE RAILING TYPE C |
| BR4 | | STEEL BRIDGE RAILING DETAILS |
| C1 | | REINFORCING BAR NOTES, BAR BENDING DETAILS, STEEL "H" PILES |
| C2 | | TYPE IA JOINT |
| SI | | "B" BORROW |
| | A | STANDARD PAVEMENT JOINTS |
| | MA | MISCELLANEOUS STANDARDS |
| | MB | MISCELLANEOUS STANDARDS |
| | ME2 | MISCELLANEOUS STANDARDS |
| | MH1 | MISCELLANEOUS STANDARDS |
| | MN | MISCELLANEOUS STANDARDS |
| | MP | MISCELLANEOUS STANDARDS |
| | GR4 | GUARD RAIL CLASS "G" |
| | GR5 | ALUMINUM GUARD RAIL DETAILS |
| | GR6 | STEEL GUARD RAIL DETAILS |
| | GR10 | GUARD RAIL BURIED ENDS |
| | CB2 | TEMPORARY CONCRETE BARRIERS |
| | MT3 | MISCELLANEOUS STANDARDS |
| | 1 | STANDARD DETOUR SIGNS |
| | 2 | STANDARD DETOUR SIGNS |
| | 2A | STANDARD DETOUR SIGNS |
| | 3 | STANDARD DETOUR SIGNS |
| | 4 | STANDARD DETOUR SIGNS |
| | 5 | STANDARD DETOUR SIGNS |

GENERAL PLAN

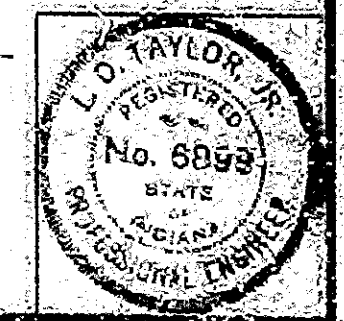
CONTINUOUS REINFORCED CONCRETE SLAB BRIDGE
 3 SPANS: 10'-20'-3" 10'-25'-6" 10'-20'-3"
 NO SKEW 42'-0" ROADWAY
 S.R. 124 OVER BROOK CREEK

INDIANA DEPARTMENT OF HIGHWAYS
 HUNTINGTON COUNTY

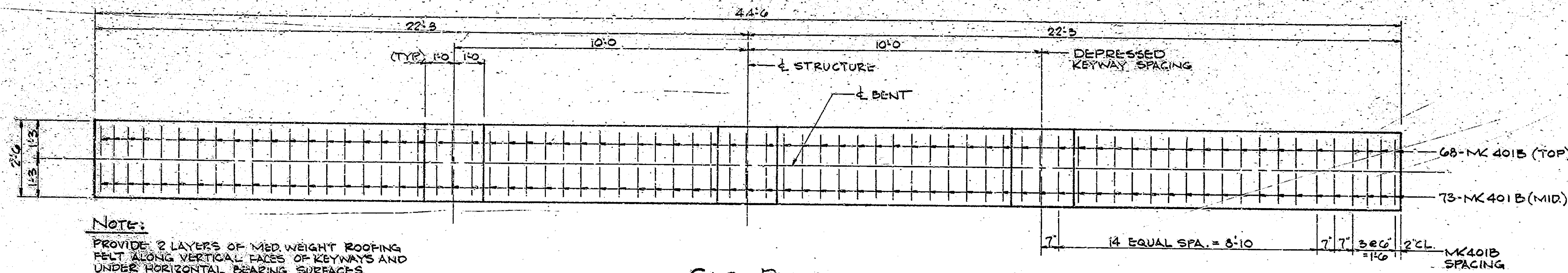
SCALE: AS NOTED

DATE: June 22, 1983

DRAWING: C2 OF C6 SHEET: 7 OF 46
 PROJECT: RS-3635(3)
 CONTRACT NO. B-1506B
 BRIDGE FILE: 124-35-6503

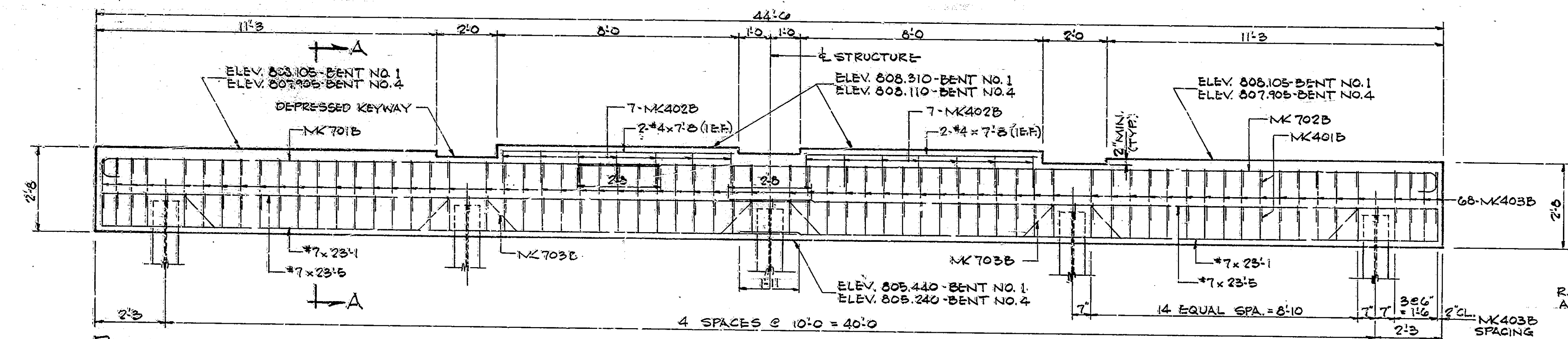


5/19/83
6/4/83



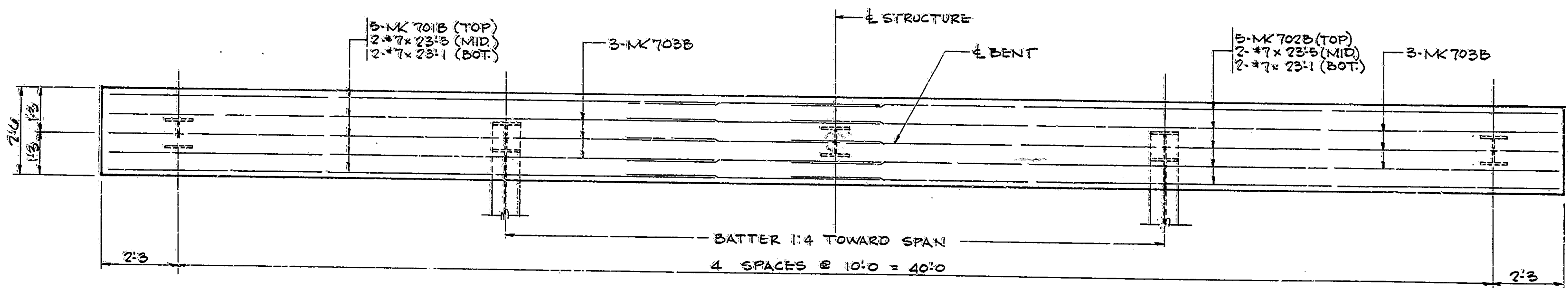
NOTE:
 PROVIDE 2 LAYERS OF MED WEIGHT ROOFING FELT ALONG VERTICAL FACES OF KEYWAYS AND UNDER HORIZONTAL BEARING SURFACES.

CAP PLAN
 SCALE: 1/2" = 1'-0"

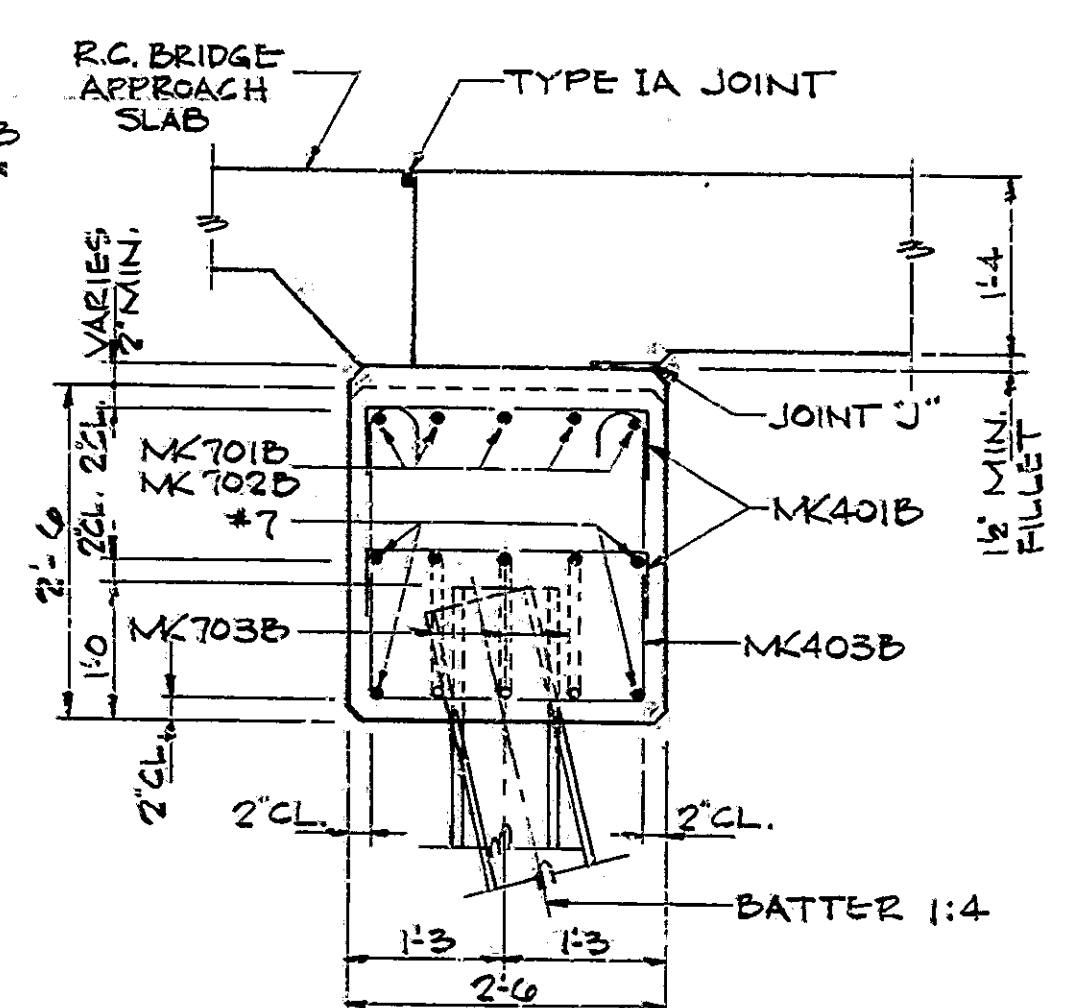


PILING:
 5" HP10 x 42 x 16'-0" STEEL 'H' PILES

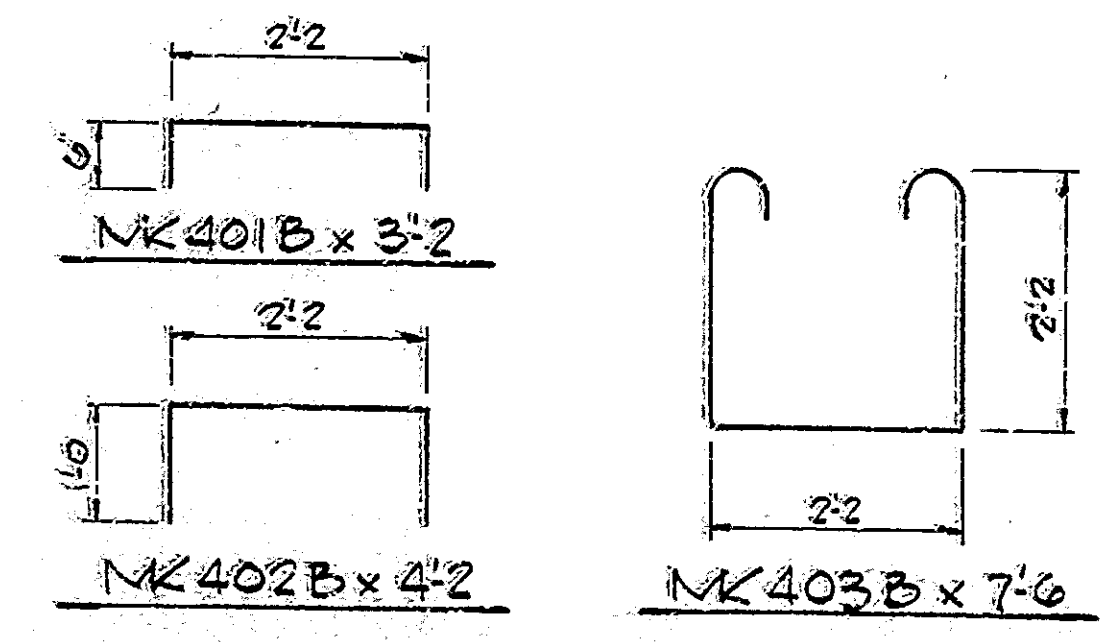
ELEVATION
 SCALE: 1/2" = 1'-0"



PILING PLAN
 SCALE: 1/2" = 1'-0"



SECTION "A-A"
 SCALE: 3/4" = 1'-0"



NOTES:
 1. FOR REINFORCING BAR NOTES SEE BRIDGE STD. C1.
 2. FOR JOINT "J" DESCRIPTION, SEE DWG. C6.
 3. FOR GENERAL NOTES, SEE DWG. C2.
 4. SEE GENERAL PLAN, DWG. C3 FOR CORED HOLE IN ROCK DETAIL.

BILL OF MATERIALS
 BENTS NO. 1 & NO. 4
 ONE BENT ONLY

| SIZE OR MK | NO. PCS | LENGTH | WEIGHT |
|--------------------------|-----------|--------|-----------------|
| 701B | 5 | 19'-3" | |
| 702B | 5 | 29'-3" | |
| 703B | 6 | 25'-1" | |
| *7 | 4 | 23'-5" | |
| *7 | 4 | 23'-1" | |
| TOTAL | *7 | | 1,883* |
| 401B | 141 | 3'-2" | |
| 402B | 14 | 4'-2" | |
| 403B | 68 | 7'-6" | |
| *4 | 4 | 7'-6" | |
| TOTAL | *4 | | 698* |
| TOTAL REINFORCING | | | 1,881* |
| CONCRETE | | | |
| CLASS 'A' | | | 11,247 |
| MISCELLANEOUS | | | |
| 5" HP10 x 42 x 16'-0" | | | 80 L.F. |
| STEEL 'H' PILES | | | 80 L.F. |
| SURFACE SEAL | | | 115 S.F. |

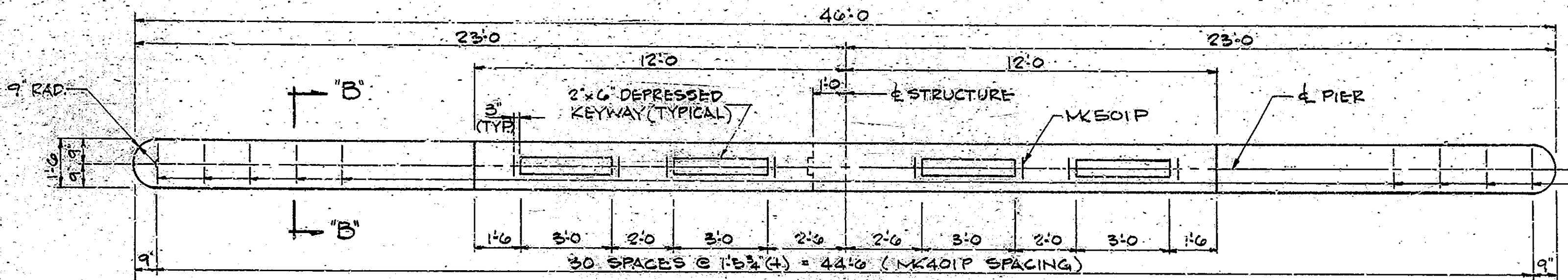
BENTS NO. 1 & NO. 4
INDIANA DEPARTMENT OF HIGHWAYS

SCALE: AS NOTED
 DATE: June 22, 1983

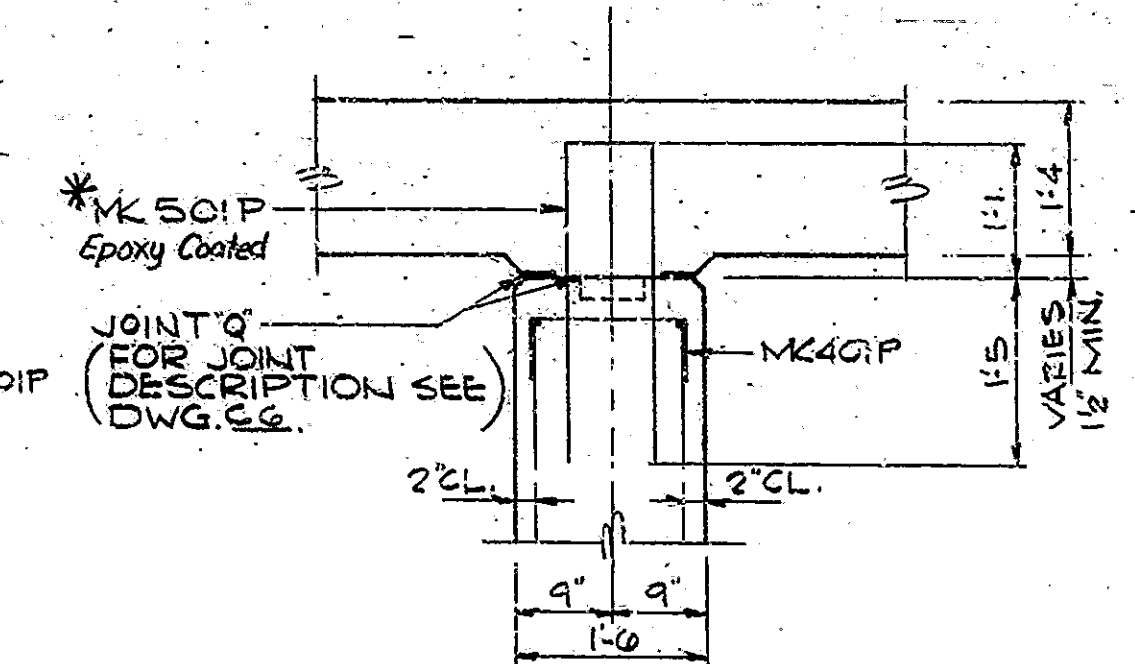
DRAWING: C3 OF C6 SHEET: 8 OF 46
 PROJECT: RS-3635(S)
 CONTRACT NO: B-15068
 BRIDGE FILE: 124-35-6503



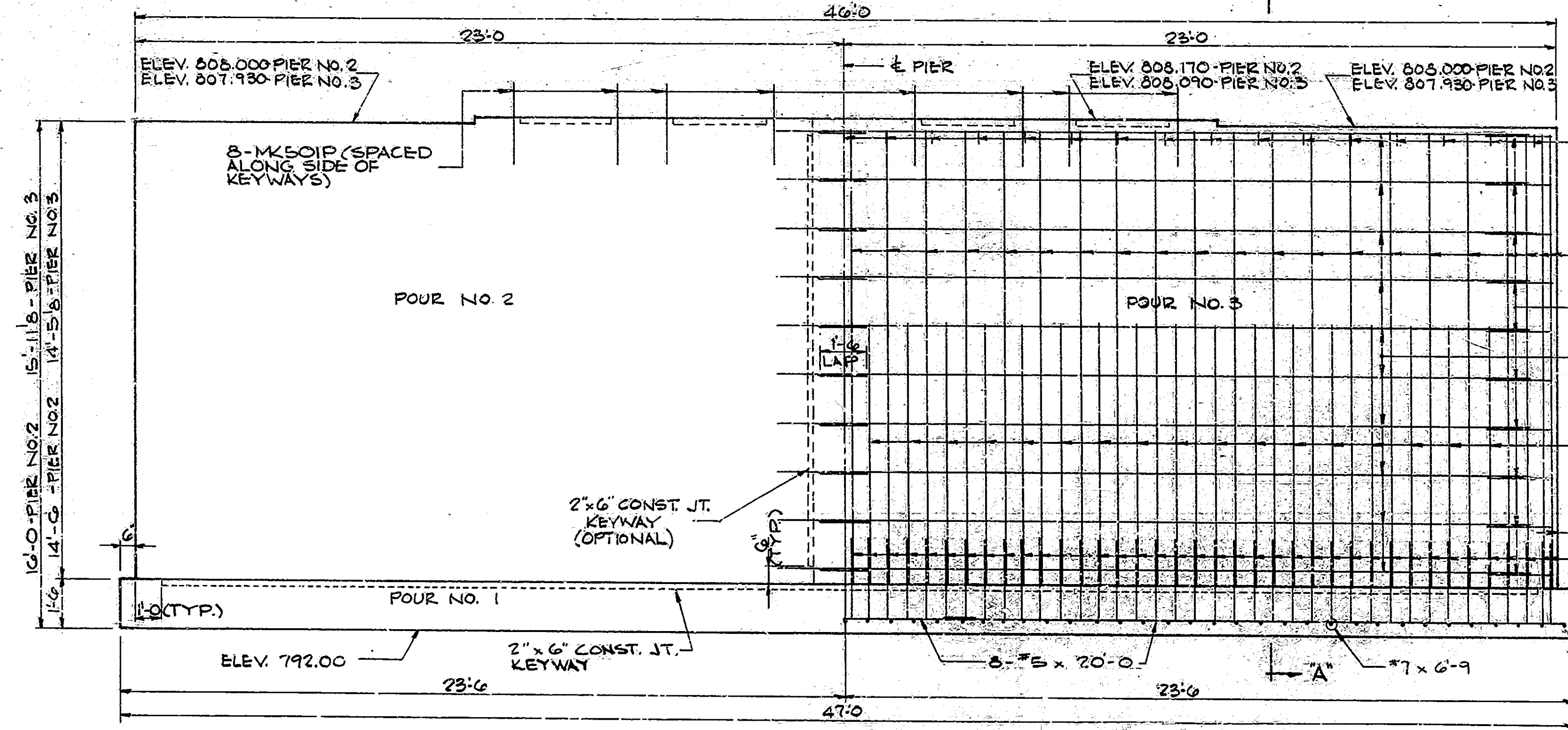
5/19/83
6/11/83
6/4/83



CAP PLAN
SCALE: 3/8" = 1'-0"

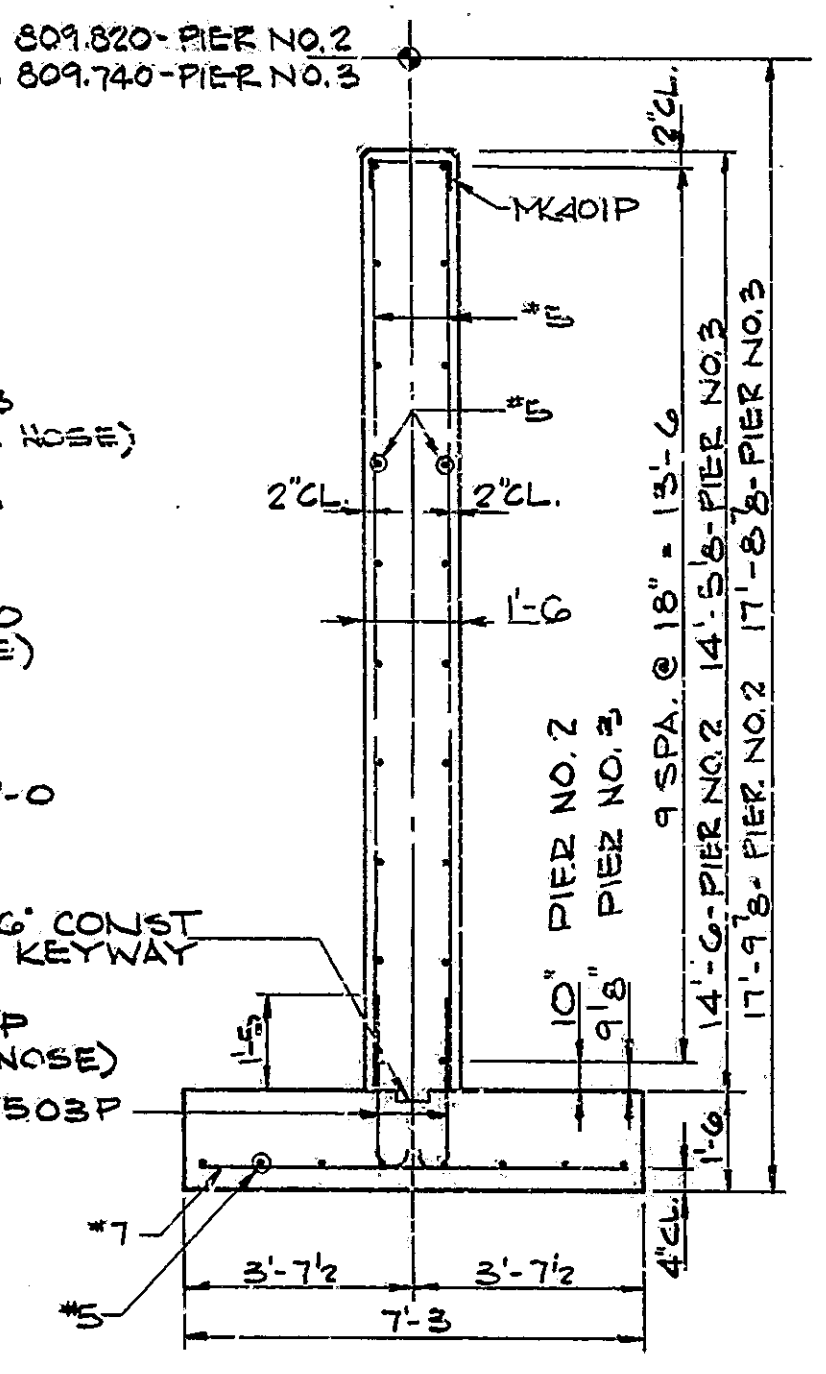


SECTION B-B
SCALE: 3/8" = 1'-0"

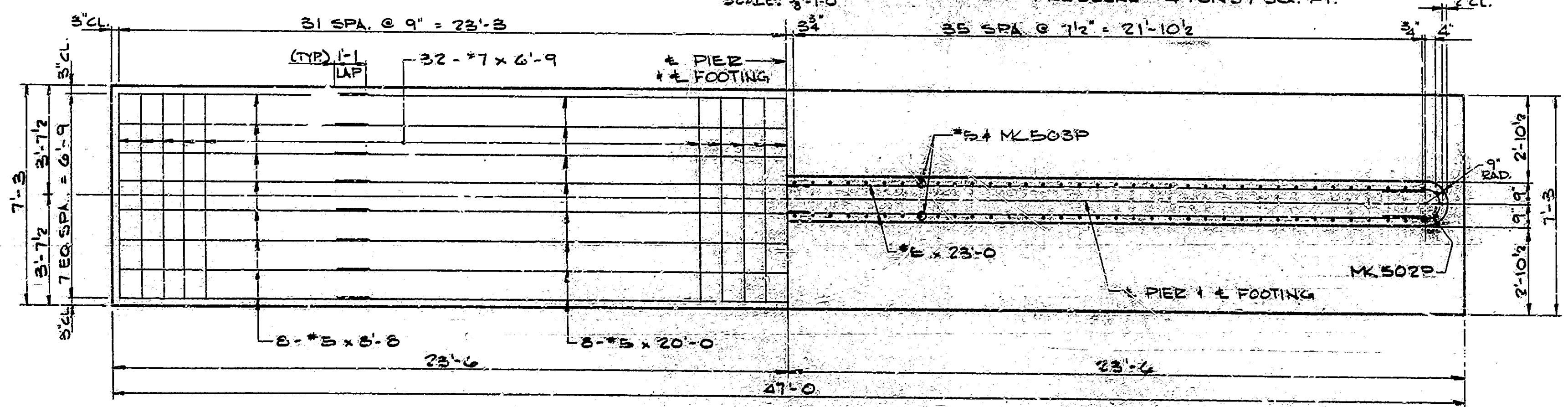


ELEVATION
SCALE: 3/8" = 1'-0"

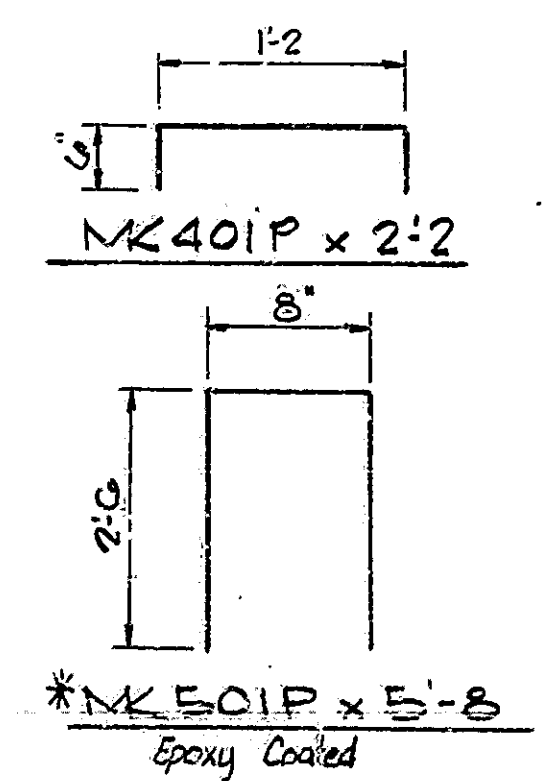
NOTE: MAX. ROCK BEARING PRESSURE = 4 TONS / SQ. FT.



SECTION A-A
SCALE: 3/8" = 1'-0"



FOOTING PLAN
SCALE: 3/8" = 1'-0"



- NOTES:
- FOR REINFORCING BAR NOTES SEE BRIDGE STD. C-1.
 - FOR GENERAL NOTES, SEE DWG. C-2.
 - REINFORCING STEEL SHALL NOT BE ORDERED UNTIL ROCK IS UNCOVERED.

PIERS NO. 2 & NO. 3
INDIANA DEPARTMENT OF HIGHWAYS

SCALE: AS NOTED DATE: June 22, 1983

DRAWING: C4 OF C6 SHEET: 9 OF 46
PROJECT: RS-3635(3)
CONTRACT NO. B-1506B
BRIDGE FILE: 124-35-6503

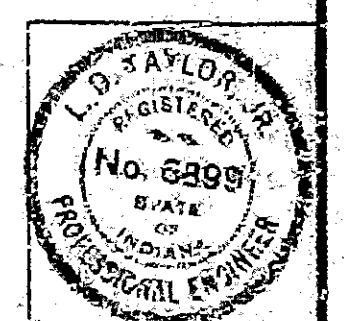
BILL OF MATERIALS

ONE PIER ONLY

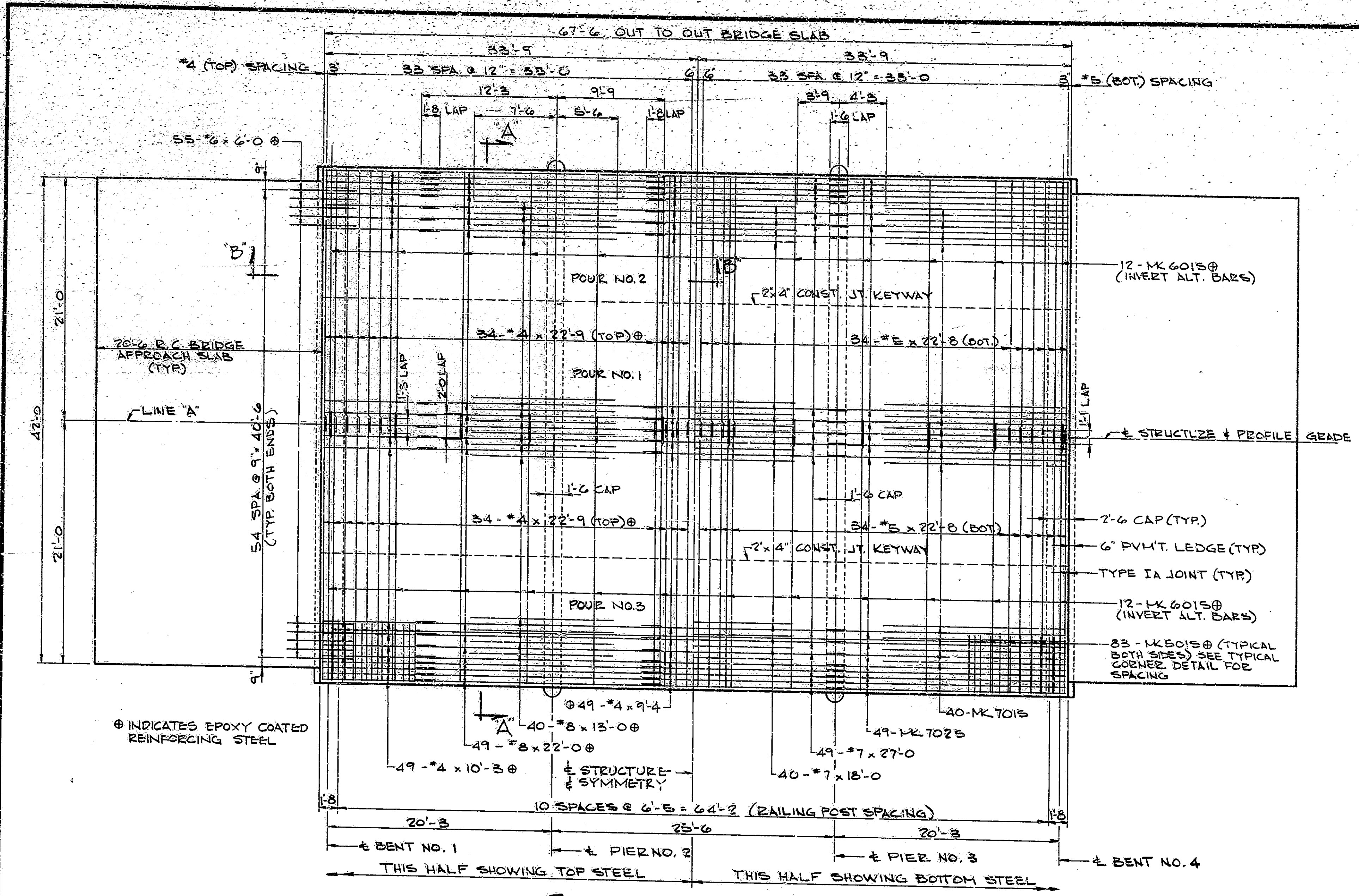
| SIZE OR MK | NO. PCS. | LENGTH | WEIGHT |
|-----------------------|----------|--------|-----------|
| #7 | 63 | 6'-9" | |
| TOTAL #7 | | | 869# |
| #501P | 8 | 5'-6" | 47# |
| #502P | 20 | 4'-7" | |
| #503P | 150 | 5'-2" | |
| #5 | 40 | 23'-0" | |
| #5 | 16 | 20'-0" | |
| #5 | 82 | 14'-3" | |
| #5 | 8 | 8'-8" | |
| #5 | 68 | 8'-0" | |
| TOTAL #5 | | | 3,743# |
| 401P | 31 | 2'-2" | |
| TOTAL #4 | | | 45# |
| TOTAL REINFORCING | | | 4,657# |
| CONCRETE | | | |
| CLASS "B" POUR NO. 1 | | | 18.8 C.Y. |
| CLASS "A" POUR NO. 2 | | | 17.7 C.Y. |
| CLASS "A" POUR NO. 3 | | | 19.4 C.Y. |
| TOTAL CLASS "A" CONC. | | | 37.1 C.Y. |
| MISCELLANEOUS | | | |
| SURFACE SEAL | | | 74 S.F. |

* Denotes Epoxy Coated Reinf. Steel.

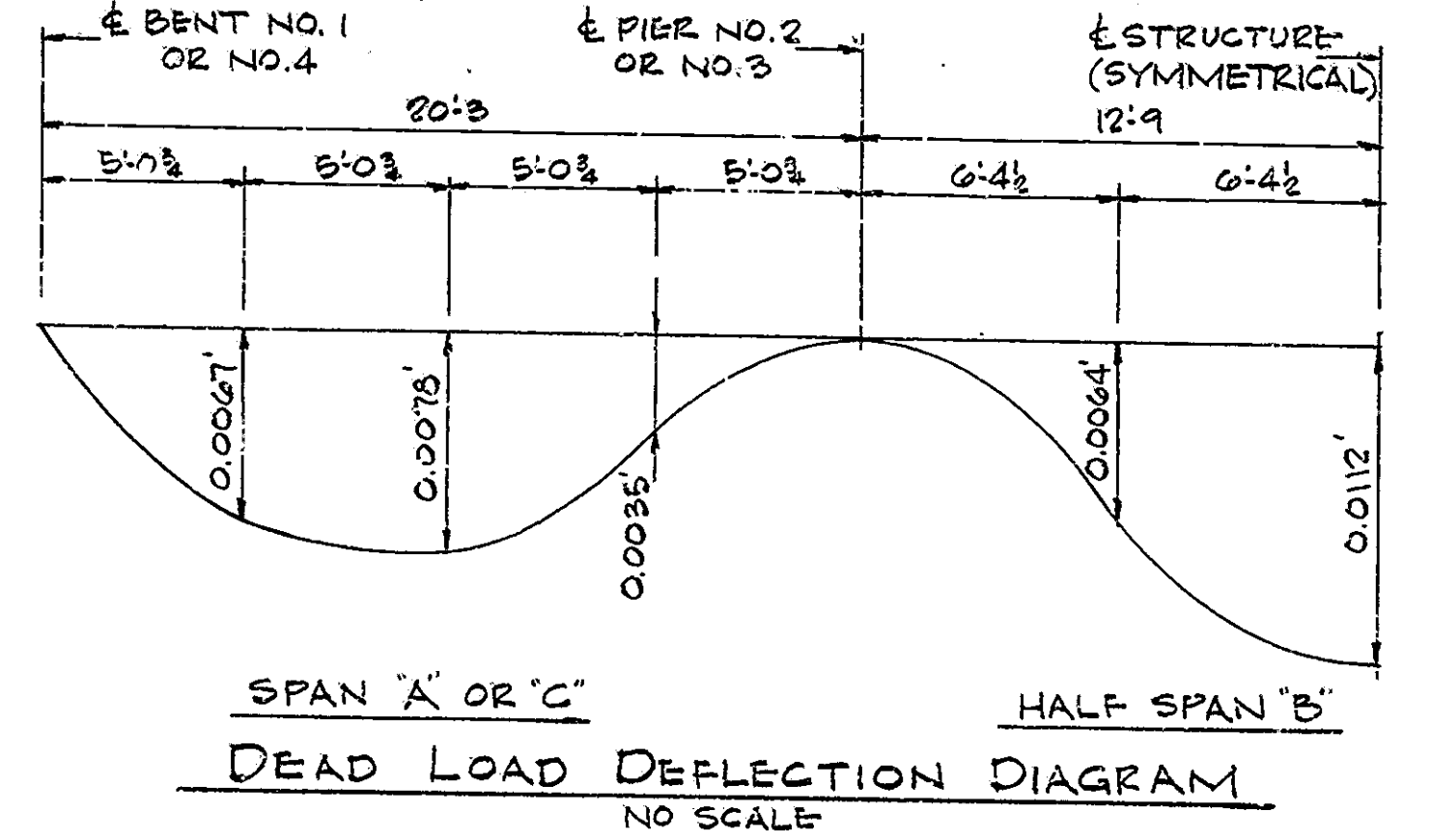
DESIGNED: CWD
DRAWN: WDM, CWD, L.D.S.
TRACED: CWD



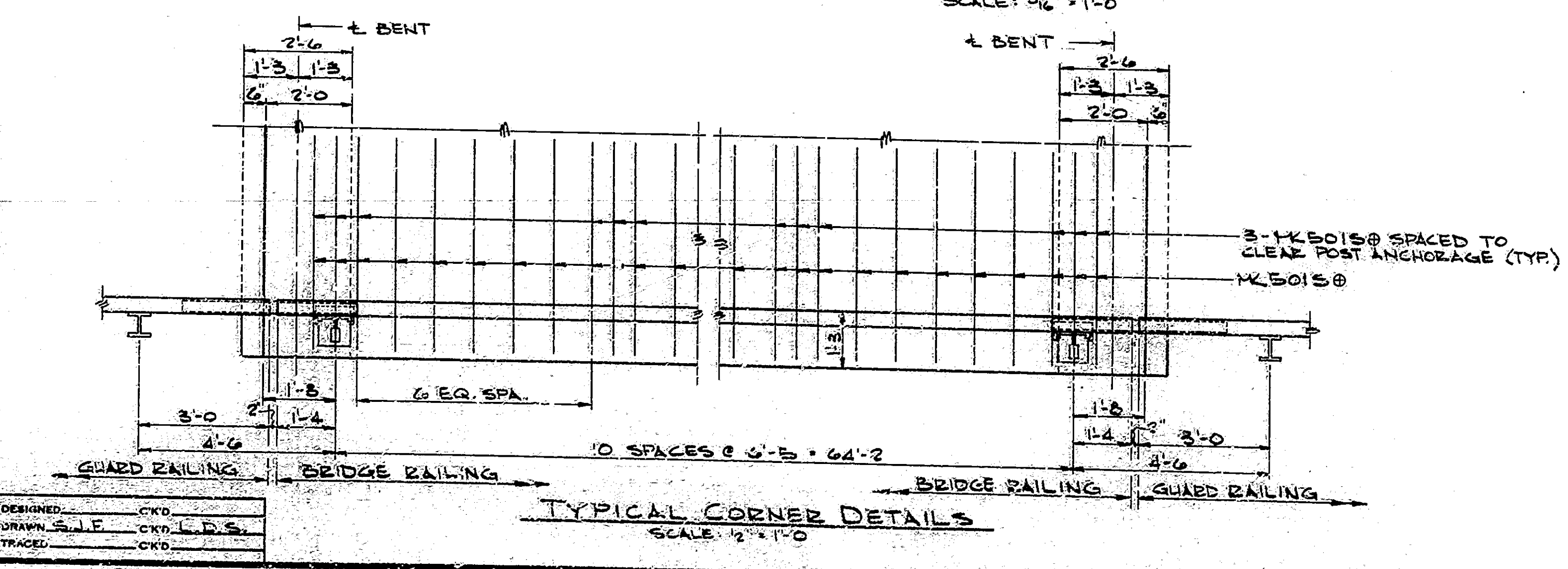
5/17/83
6/2/83



DESIGN DATA
REINFORCED CONCRETE:
 UNIT STRESSES: $f_c = 20,000$ PSI; $f_s = 1,200$ PSI
 LIVE LOAD: HS20-44 WITH IMPACT AND DISTRIBUTION OF LOADS IN ACCORDANCE WITH 1977 A.A.S.H.T.O. SPECIFICATIONS INCLUDING 1978-1981 INTERIM SPECIFICATIONS
 DEAD LOAD: INCREASED 35% S.F. OF ROADWAY FOR FUTURE WEARING SURFACE.
 SLAB DESIGNED WITH A STRUCTURAL DEPTH OF 14 1/2\"/>



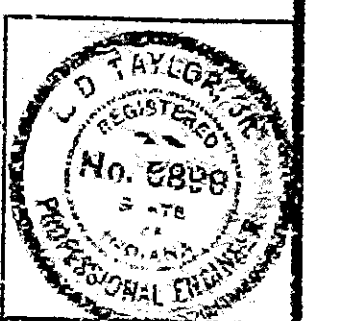
- NOTES:**
1. SEE BRIDGE STD. C FOR REINFORCING BAR NOTES.
 2. SEE DWG. C6 FOR BILL OF MATERIALS AND ADDITIONAL DETAILS.
 3. SEE DWG. C2 FOR GENERAL NOTES.
 4. THE TOP REINFORCING IN THE DECK SHALL BE SECURELY TIED DOWN TO THE DECK FORMS TO PREVENT LIFTING DURING CONCRETE PLACEMENT.



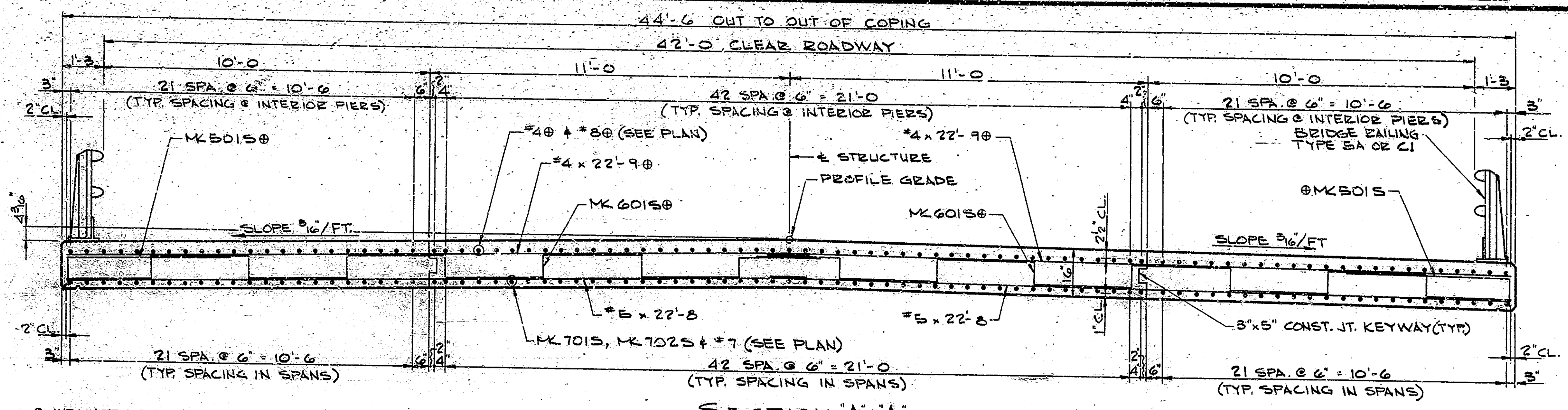
SUPERSTRUCTURE
INDIANA DEPARTMENT OF HIGHWAYS

SCALE: AS NOTED DATE: June 23, 1983

DRAWING: C5 OF C6 SHEET: 10 OF 46
 PROJECT: RS-3635(3)
 CONTRACT NO. B-15068
 BRIDGE FILE: 124-35-6503



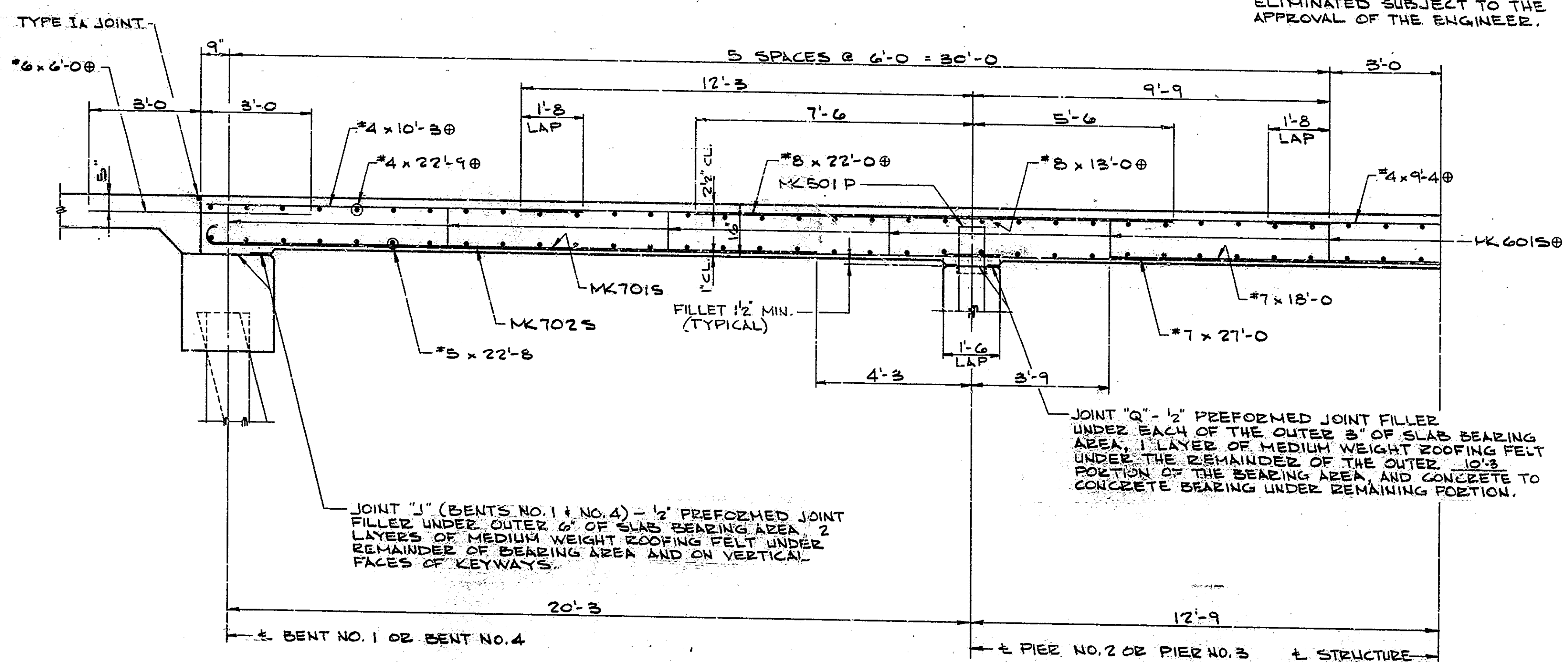
6/17/83
 6/17/83
 6/17/83



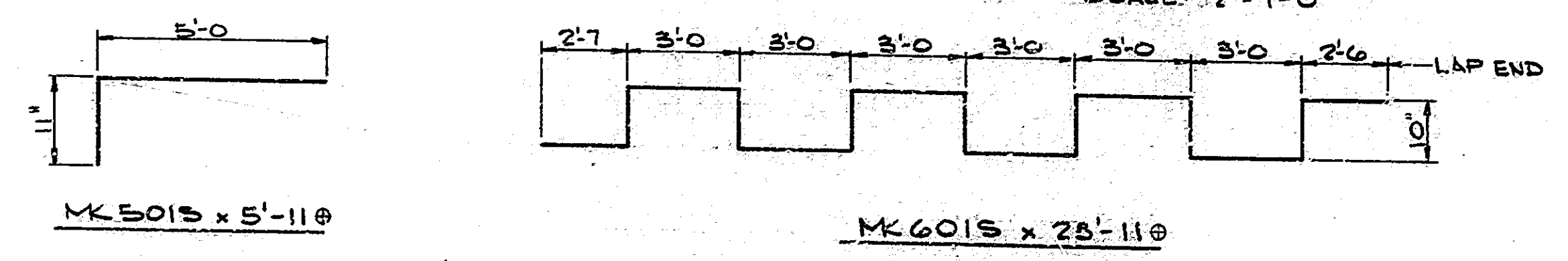
⊙ INDICATES EPOXY COATED REINFORCING STEEL

SECTION A-A
 SCALE: 1/2" = 1'-0"

NOTE:
 3' x 5' CONST. JT. KEYWAYS MAY BE ELIMINATED SUBJECT TO THE APPROVAL OF THE ENGINEER.



HALF SECTION B-B
 SCALE: 1/2" = 1'-0"



NOTE:
 FOR ADDITIONAL NOTES SEE DWG. C5.

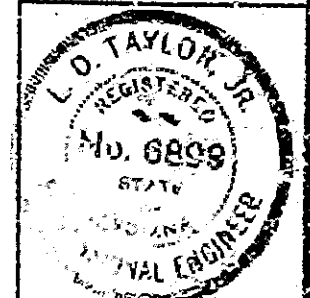
BILL OF MATERIALS

| EPOXY COATED REINFORCING | | | |
|-----------------------------------|----------|---------|----------|
| SIZE/FORM | NO. PCS. | LENGTH | WEIGHT |
| #8 | 98 | 22'-0" | |
| #8 | 80 | 13'-0" | |
| TOTAL | #8 | | 8,533* |
| #6 | 24 | 28'-11" | |
| #6 | 110 | 6'-0" | |
| TOTAL | #6 | | 2,034* |
| #5 | 166 | 5'-11" | |
| TOTAL | #5 | | 1,024* |
| #4 | 136 | 22'-9" | |
| #4 | 98 | 10'-3" | |
| #4 | 49 | 9'-4" | |
| TOTAL | #4 | | 3,043* |
| TOTAL EPOXY COATED REINF. 14,634* | | | |
| UNCOATED REINFORCING | | | |
| SIZE/FORM | NO. PCS. | LENGTH | WEIGHT |
| 7015 | 80 | 17'-5" | |
| 7025 | 98 | 22'-5" | |
| #7 | 49 | 27'-0" | |
| #7 | 40 | 18'-0" | |
| TOTAL | #7 | | 11,514* |
| #5 | 136 | 22'-8" | |
| TOTAL | #5 | | 3,215* |
| TOTAL UNCOATED REINF. 14,729* | | | |
| CONCRETE - CLASS 'C' | | | |
| POUR NO. 1 | | | 74.6 CY |
| POUR NO. 2 | | | 38.2 CY |
| POUR NO. 3 | | | 28.2 CY |
| TOTAL CONCRETE CLASS 'C' 141.0 CY | | | |
| MISCELLANEOUS | | | |
| RAILING - TYPE SA OR C1 | | | 1337 LF |
| SURFACE SEAL | | | 3,246 SF |

SUPERSTRUCTURE DETAILS
 INDIANA DEPARTMENT OF HIGHWAYS

SCALE: AS NOTED DATE: Jun 22, 1983

DRAWING: C6 OF C6 SHEET: 11 OF 46
 PROJECT: RS-3635(s)
 CONTRACT NO. 8-15068
 BRIDGE FILE: 124-35-6503



DESIGNED: CKD
 DRAWN: S.J.F. CKD L.D.S.
 TRACED: CKD

6/17/83
6/18/83
6/16/83

| ITEM | CONCRETE | | | | STRUCTURE | | | | | | | | | | QUANTITIES | | | | | | | | | | | | |
|----------------|----------|----------|----------|----------|--------------------------|--------------------|-------------------|---------------------------|---------------------|------------------|----------------|----------|----------|----------|------------|----------------------|-------------------------------------|-----------------------|-----------------|------------------|--------------------|------|---------------------|--------------------|----------------|----------------------|-----------------------|
| | CLASS C | CLASS A | CLASS B | CLASS B | CONCRETE RAILING CLASS C | REINF. STEEL TOTAL | STRUCT. STEEL *** | EPOXY COATED REINF. STEEL | ANCHOR PLATES IN AP | UNTREATED TIMBER | TREATED TIMBER | PILES | | | | CAST IRON DRAIN PIPE | CAST IRON GRATES, BASINS & FITTINGS | RAILING TYPE SA OR CI | EXP. JOINT TYPE | EXP. JOINT CLASS | CONC. STR. MEMBERS | | BRIDGE DECK SURFACE | CORED HOLE IN ROCK | SURFACE SEAL** | FINISHING AND CURING | BLASTING AND CLEANING |
| | CU. YDS. | CU. YDS. | CU. YDS. | IN. FTG. | | | | | | | | CU. YDS. | CU. YDS. | LIN. FT. | LBS. | | | | | | LBS. | LBS. | | | | | |
| SUPERSTRUCTURE | 151.0 | | | | | 14,729 | 14,634 | | | | | | | | | 133.7 | | | | | | | | | | 3,246 | |
| SUBSTRUCTURE | | | | | | | | | | | | | | | | | | | | | | | | | | | |
| BENT No. 1 | 11.2 | | | | | 1,881 | | | | | | | | | | | | | | | | | | | | 115 | |
| PIER No. 2 | 37.1 | | | 18.8 | | 4,657 | | 47 | | | | | | | | | | | | | | | | | | 74 | |
| PIER No. 3 | 37.1 | | | 18.8 | | 4,657 | | 47 | | | | | | | | | | | | | | | | | | 74 | |
| BENT No. 4 | 11.2 | | | | | 1,881 | | | | | | | | | | | | | | | | | | | | 115 | |
| TOTALS | 151.0 | 96.6 | | 37.6 | | 32,349 | 14,728 | | | | | | | | | 101,600 | | | | | | | | | | 5,624 | |

Reinf. Steel for Approach Structures
Reinf. Steel for R.C. Bridge Approaches
Reinf. Steel for Lip Gutter, PvmT, Topers, etc.

| STRUCT. NO. | LOCATION | SIZE | DESCRIPTION | APPROACH | | | | STRUCTURES | | | REMARKS |
|-------------|----------------------|------|-------------|----------|--------------|--------------|---------------|------------|------|------|--|
| | | | | LENGTH | CONCR. CL. A | REINF. STEEL | PIPE END SEC. | IN STRS. | LBS. | EACH | |
| 11 | 1504+70 RT. LINE 'A' | 15" | GROUP 'D' | 36 | | | 2 | | | | |
| 12 | 1506+35 LT. LINE 'A' | 6" | FBC.PCS. | 52 | | | | | | | I-BELINEATOR POST REQ'D. |
| 13 | 1507+05 RT. LINE 'A' | 6" | FBC.PCS. | 60 | | | | | | | I-BELINEATOR POST REQ'D. |
| 14 | 1508+06 LT. LINE 'A' | 15" | GROUP 'D' | 42 | | | 2 | | | | |
| 15 | 1510+17 RT. LINE 'A' | 15" | GROUP 'D' | 26 | | | 2 | | | | |
| 16 | 1511+25 RT. LINE 'A' | 15" | GROUP 'D' | 26 | | | 2 | | | | |
| 17 | 1512+78 LT. LINE 'A' | 15" | GROUP 'D' | 44 | | | 2 | | | | |
| 18 | 1514+06 RT. LINE 'A' | 15" | GROUP 'D' | 28 | | | 2 | | | | |
| TOTALS | | | | | | | | | | | Total of Reinforcing Steel Carried to Structure Quantities |

| LOCATION | DESCRIPTION | WIDTH | RADII | GRADE | LENGTH | DIST. FROM | EXCAVATION (CYS) | BITUM. SURFACE | BITUM. BINDER | BITUM. BASE | COMP. AGG. BASE |
|---------------|-------------|-------|-------|-------|--------|------------|------------------|----------------|---------------|-------------|-----------------|
| LT. 1500+88'A | CLASS II | 16 | 15-25 | +10 | 23 | 0 | 6 | 110 | ± 2.4 | 220 | ± 4.7 |
| RT. 1504+70'A | CLASS V | 24 | 25-15 | +0.58 | 136 | 25 | | | | | |
| LT. 1508+60'A | CLASS V | 24 | 15-25 | -8.17 | 198 | 15 | 126 | | | | |
| RT. 1510+19'A | CLASS II | 12 | 25-15 | -7.87 | 23 | 0 | 2 | 110 | ± 1.8 | 220 | ± 3.6 |
| RT. 1511+25'A | CLASS II | 12 | 25-15 | +7.09 | 20.5 | 0 | 1 | 110 | ± 1.6 | 220 | ± 3.3 |
| LT. 1512+78'A | CLASS V | 24 | 15-25 | -2.0 | 25 | 1 | 0 | | | | |

± PAID FOR AS "BITUMINOUS MIXTURE FOR APPROACHES"

NOTES:
Weight of Spirals includes weight of 1 1/2 extra turns top and bottom.
Spacers and 1/2 turns at laps included in cost of Spiral
*** The weight of structural steel is approximate only, and it shall be the Contractor's responsibility to determine the weight on which he bases his bid.
For Test Bar Samples See Bridge Standard C1.

| L.T. OR RT. | STATION TO STATION | PAVED SIDE DITCH (LIN. FT.) | | | | | SODDING (SQ. YD.) | | | | | | |
|-------------|-----------------------------|-----------------------------|------------|-------------|------------|---------------|-------------------|------------------|---------|-------------|-----------|-------|-----------|
| | | TYPE | PAY LENGTH | NO. OF LUGS | PAY LENGTH | CUT OFF WALLS | PAY LENGTH | TOTAL PAY LENGTH | FOR PSD | FOR DITCHES | SHOULDERS | OTHER | TOTAL SOD |
| RT | 1500+75 TO 1504+52 | | | | | | | | | | | | 391 |
| LT | 1501+08 TO 1503+75 | | | | | | | | | | | | 249 |
| LT | 1501+08 TO 1503+98 | | | | | | | | | | | ± 330 | ± 330 |
| LT | 1503+75 TO 1505+25 | "J" | 158 | 2 | 16 | 2 | 16 | 190 | 53 | | | | 53 |
| RT | 1504+88 TO 1506+50 | "J" | 170 | 1 | 8 | 2 | 16 | 124 | 57 | | | | 57 |
| LT | 1505+25 TO 1506+96 | | | | | | | | | | | 125 | 125 |
| RT | 1508+75 TO 1510+04 | "J" | 136 | 1 | 8 | 2 | 16 | 160 | 45 | | | | 45 |
| LT | 1508+81 TO 1512+55 | | | | | | | | | | | 349 | 349 |
| RT | 1510+25 TO 1511+55 | | | | | | | | | | | ± 201 | ± 201 |
| RT | 1510+30 TO 1511+12 | "J" | 86 | | | 2 | 16 | 102 | 29 | | | | 29 |
| LT | 1512+99 TO 1514+00 | | | | | | | | | | | 94 | 94 |
| | BRIDGE CORNERS | | | | | | | | | | | 79 | 79 |
| | Delineator Posts, 25x4xPost | | | | | | | | | | | 12 | 12 |
| TOTALS | | | | | | | | 646 | | | | ± 531 | ± 1483 |

⊗ INDICATES, SODDING (NURSERY)
± NURSERY SOD NOT INCLUDED
NOTE: See Sheet N22 for Underdrain Table.

| DATE | ITEM |
|----------|--|
| 10-11-84 | Reinf. Steel 17mm Epoxy Coated, Rev. Note for Underdrains, Alms. |

BRIDGE SUMMARY
INDIANA DEPARTMENT OF HIGHWAYS

DATE June 22, 1983

SHEET 12 OF 46

PROJECT: RS-3635(3)
CONTRACT NO: B-15068
BRIDGE FILE: 124-35-6503

