

BRIDGE CONTRACT NO. 4415

INDEX						
PROJECT	STRUCTURE	TYPE	SPAN	OVER	STATION	CONTRACT NO.
1-03-4(10)	267-E9-4234	CONTINUOUS R.C. GIRDER	38', 65', 65', 38'	U.S. 52	10+00	4415
SHEET NO.	SHEET DESIGNATION	SUBJECT				
1		INDEX & TITLE SHEET				
2	C1	TYPICAL CROSS SECTIONS				
3-6		ROAD PLAN & PROFILE SHEET NOS 13, 14, 15, 16, RD. PROJ. 1-03-4(10)				
7	C2	LAYOUT				
8	C3	GENERAL PLAN				
9	C4	SUBSTRUCTURE - BENTS				
10	C5	SUBSTRUCTURE - PILE CAPS				
11-14	C6-C9	SUPERSTRUCTURE DETAILS				
15	C10	ROLLERS & DIAPHRAGM				
16	C11	BILL OF MATERIALS				
17		SUMMARY				
18	BRIDGE STD. C1	STANDARD MISC. DETAILS (REV. 6-3-57)				
19	BRIDGE STD. H1	TYP. DETAILS OF THICKENED PAVEMENT AND LOCATING TOE OF SLOPE AROUND END BENTS (REV. 3-20-53)				
20	BRIDGE STD. S1	TYPICAL DETAILS FOR PLACING SP. FILL MAT'L (REV. 9-20-52)				
21	BRIDGE STD. M1	MISCELLANEOUS APPROACH DETAILS (REV. 6-3-57)				
22	BRIDGE STD. M2	MISCELLANEOUS APPROACH DETAILS (REV. 6-3-57)				
23	BRIDGE STD. M3	MISCELLANEOUS APPROACH DETAILS (9-23-57)				
23A	BRIDGE STD. R2	BRIDGE LIGHTING DETAILS (JUNE 30, 1930)				

STATE OF INDIANA
STATE HIGHWAY DEPARTMENT

BRIDGE PLANS
FOR SPANS OVER 20 FEET
ON
STATE ROAD NO. 267 SECTION E 9
1-PROJECT NO. 03-4(10)

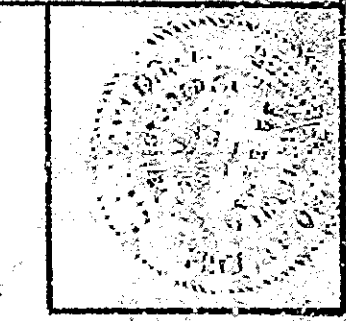
SR 267 OVER INDIANAPOLIS TO LEBANON ROAD
BEGINNING AT A POINT 262 FEET SOUTHWEST OF THE NORTH LINE OF SEC. 27, T18N R1E, AND RUNNING IN A SOUTH WESTERLY DIRECTION 260 FEET TO A POINT 622 FEET SOUTHWEST OF THE NORTH LINE OF SEC. 27, T18N R1E, BOONE COUNTY

ROADWAY LENGTH = 0.010 MILES
BRIDGE LENGTH = 0.059 MILES
TOTAL LENGTH = 0.049 MILES
CONSIDERED 0.00 MILES ON U.S. 52

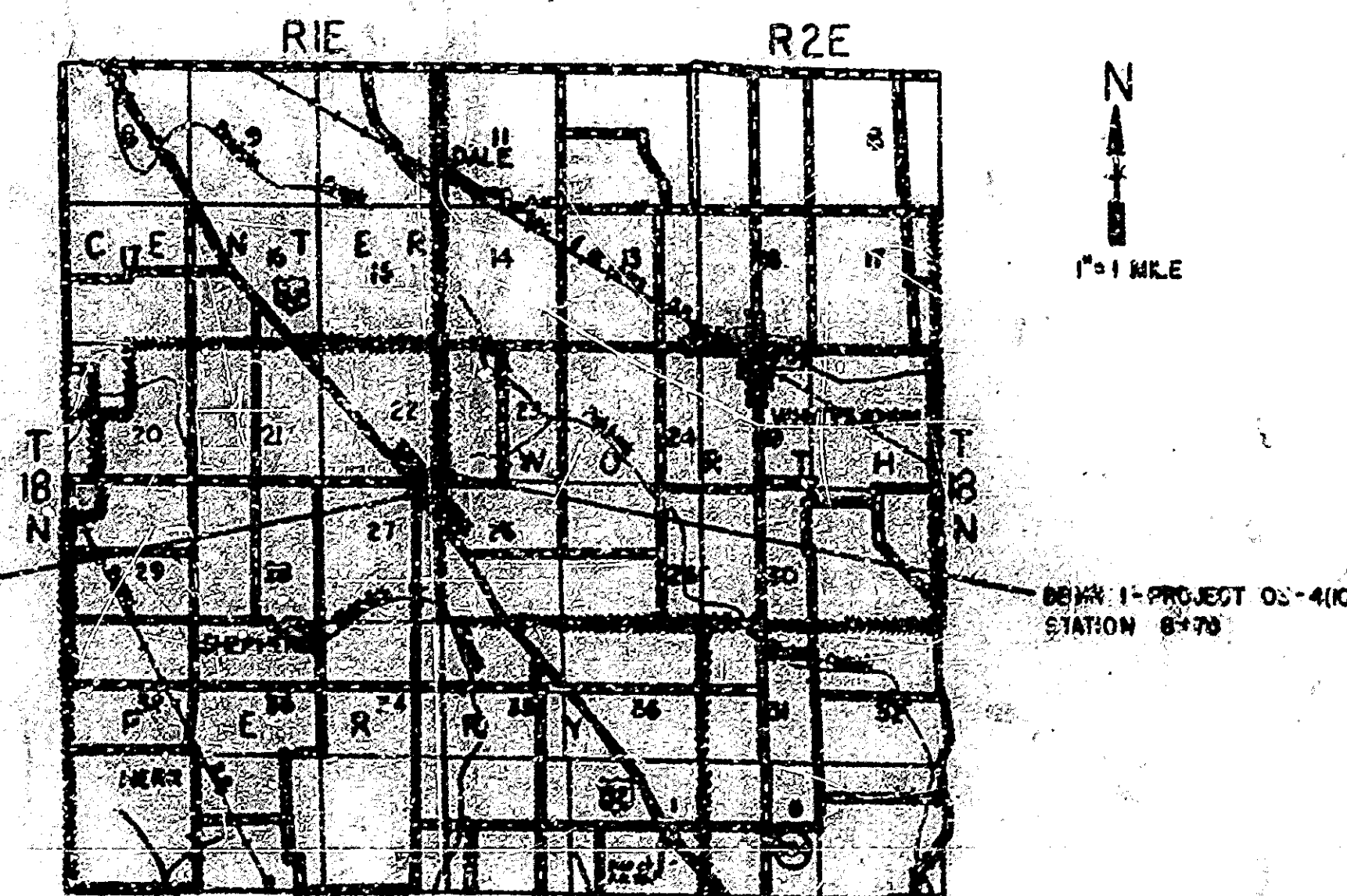
MAX. GRADE +4%

BRIDGES OVER 20' SPAN					
FISCAL YEAR	STATE	PROJECT NO.	FISCAL YEAR	SHEET NO.	TOTAL SHEETS
1958	IND.	4(10)	1958	1	23

THESE PLANS PREPARED BY
BOYD E PHELPS INC
ENGINEERS
INDIANAPOLIS & MICHIGAN CITY, IND.
BY: *[Signature]*
DATE: March 12, 1958



BOONE COUNTY



TRAFFIC DATA (SR 267)
AVERAGE DAILY TRAFFIC: 1958 (ADJUSTED) 518 V.P.D.
AVERAGE DAILY TRAFFIC 1978 (PROJECTED) 1208 V.P.D.
TRUCKS 5.5%
ACCESS CONTROL NONE F=11
DESIGN SPEED 60 M.P.H.

TRAFFIC DATA (FAI-03)
ADT. (1954) 8500 V.P.D.
ADT. (1975) 18000 V.P.D.
TRUCKS 3.7%
DESIGN SPEED 70 M.P.H.

Revised 7-2-59 Sheet 8
And Sheet 23A Added

APPROVED AND ADOPTED
BY STATE HIGHWAY DEPARTMENT OF INDIANA
DATE 4-11-58

[Signature]
CHIEF ENGINEER, STATE HIGHWAY DEPARTMENT OF INDIANA

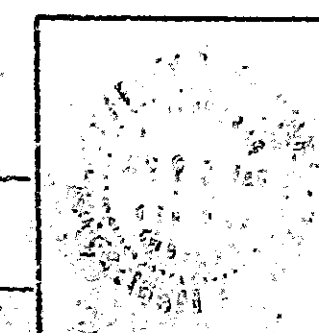
APPROVED
DATE 4-11-58

[Signature]
CHIEF ENGINEER, STATE HIGHWAY DEPARTMENT OF INDIANA

STATE HIGHWAY DEPARTMENT OF INDIANA
1957 STANDARD ROAD AND BRIDGE SPECIFICATIONS
TO BE USED WITH THESE PLANS

RECOMMENDED FOR APPROVAL DATE 4-10-58

[Signature]
SUPERVISOR OF PUBLIC ROADS, STATE HIGHWAY DEPARTMENT OF INDIANA

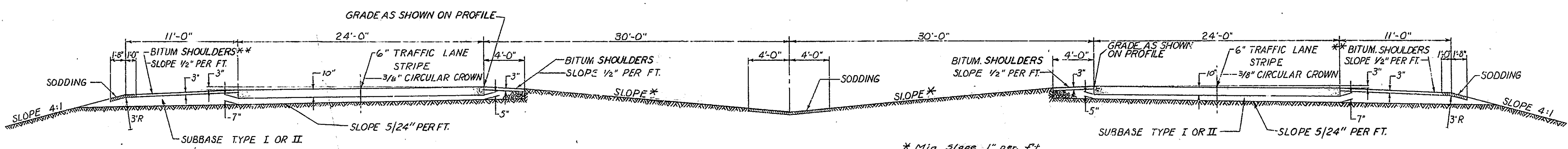


DEPARTMENT OF COMMERCE
BUREAU OF PUBLIC ROADS
APPROVED: _____
DATE: _____
DESIGN ENGINEER

BRIDGE FILE- 267-E9-4234

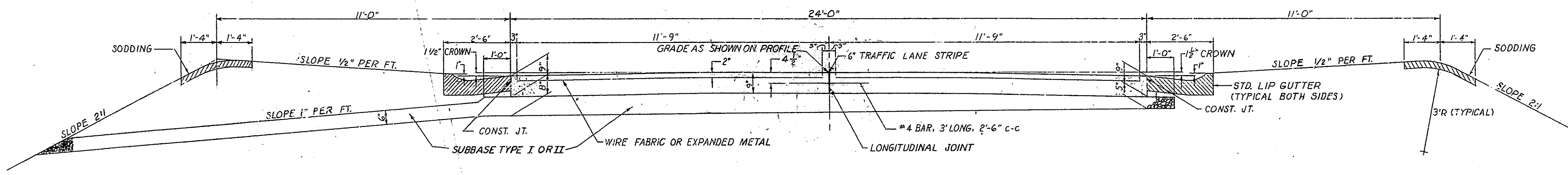
2

BRIDGES OVER 20' SPAN					
IND. ROAD REG. NO.	STATE	PROJECT NO.	FISCAL YEAR	SHEET NO.	TOTAL SHEETS
4	IND.	F03-410	1958	2	25



TYPICAL FILL SECTION - U.S. 52
SCALE: 3/16" = 1'-0"

**NOTE: Outside Bituminous Shoulders to be eliminated within interchange.

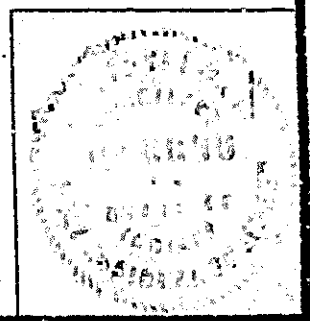


TYPICAL FILL SECTION - STATE ROAD 267
SCALE: 1/2" = 1'-0"

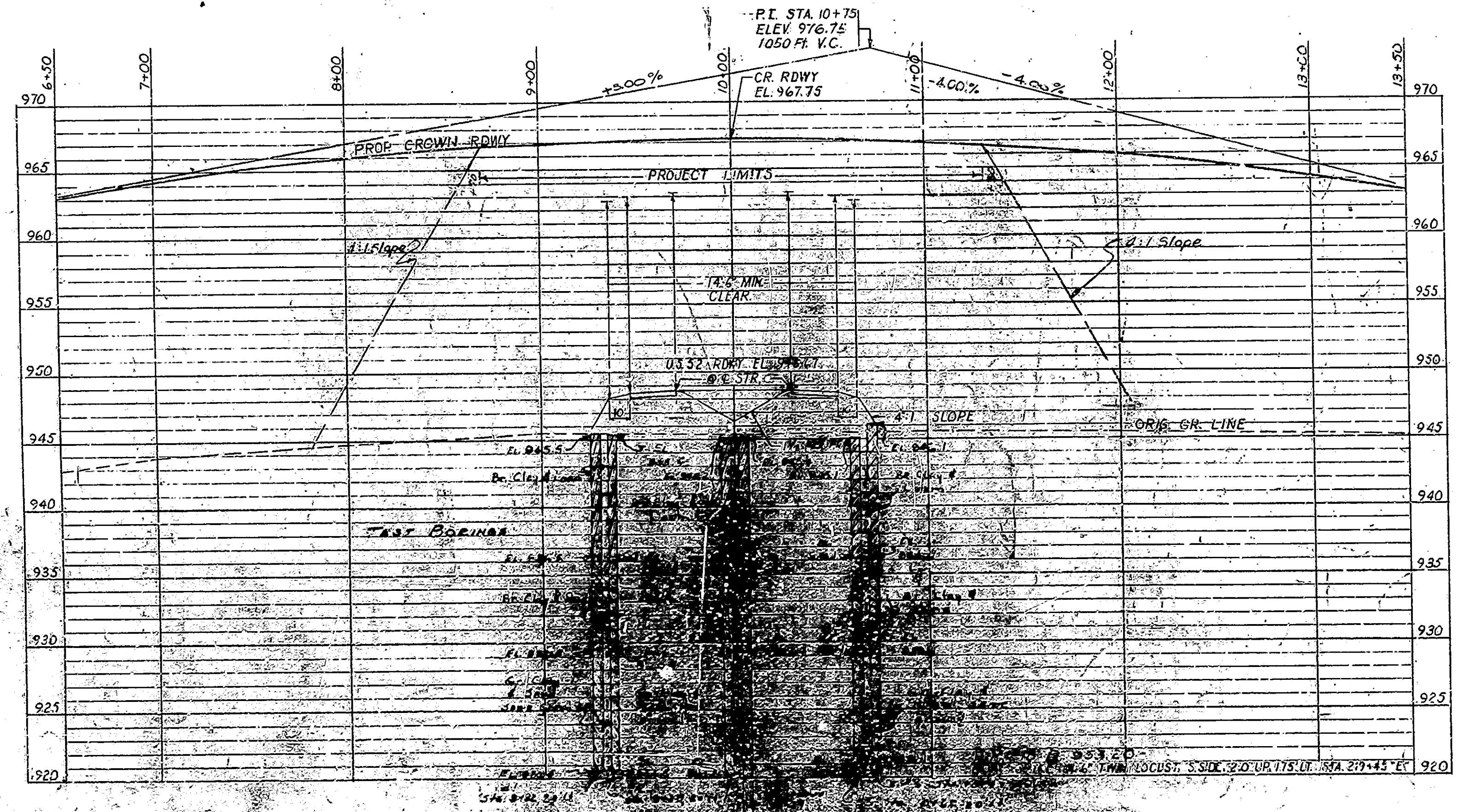
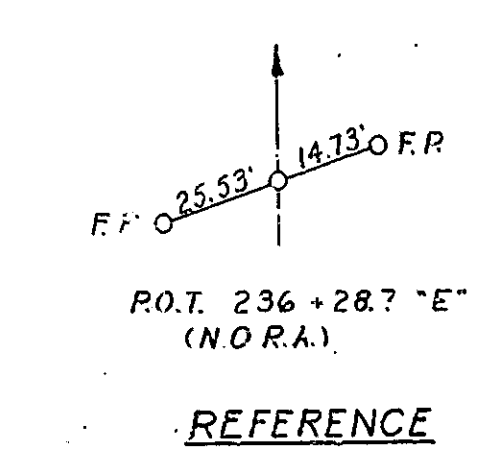
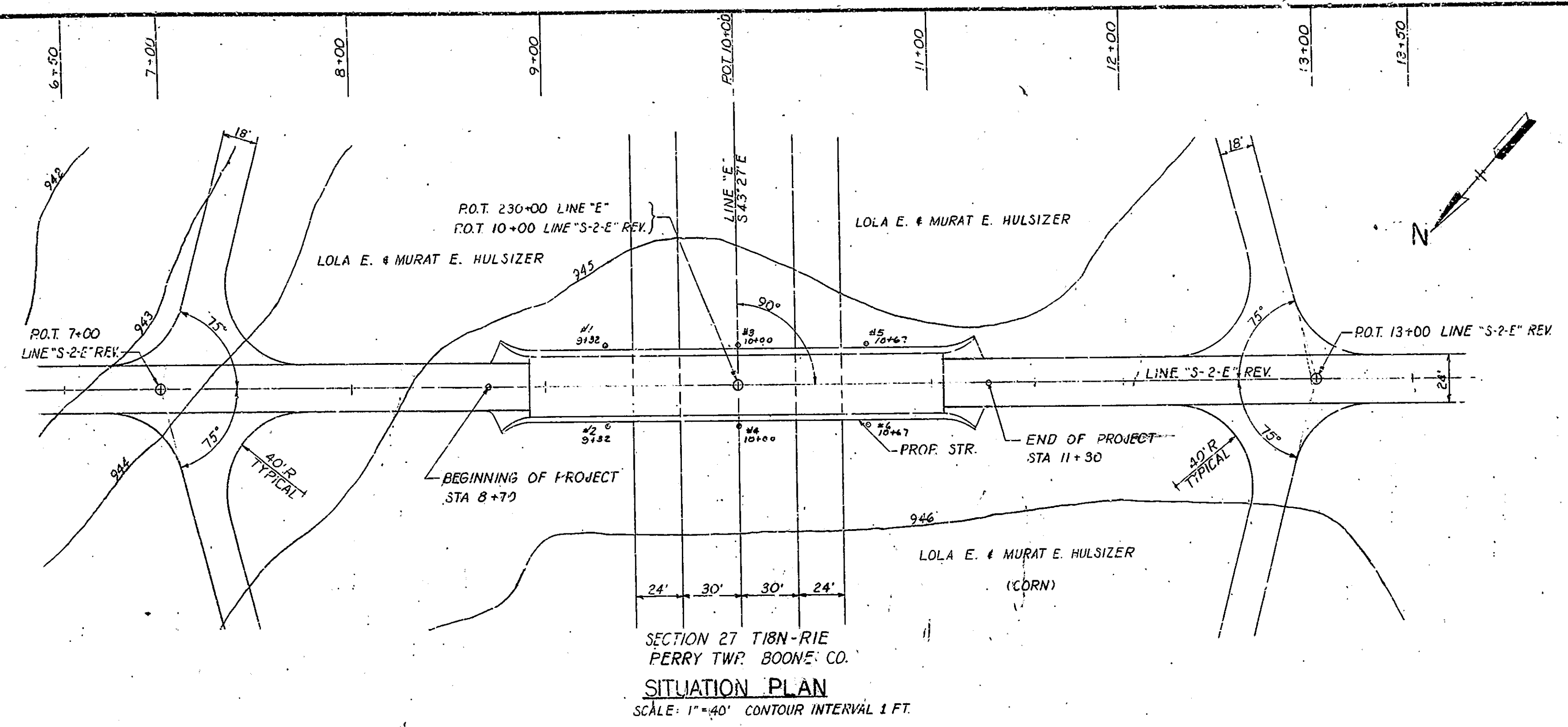
TYPICAL CROSS SECTIONS
STATE HIGHWAY DEPARTMENT OF INDIANA

SCALE: AS NOTED
SUBMITTED FOR APPROVAL: *S. N. Taylor* MARCH 12, 1958
DRAWING: C1 OF 11
PROJECT: I-03-410 STATION:
BRIDGE CONTRACT NO. 4415
BRIDGE FILE: 267-E9-4294

DESIGNED	M.J.G.	CK'D
DRAWN	R.K.	CK'D M.J.G.
TRACED		CK'D



BRIDGES OVER 20' SPAN					
PUR. ROAD RES. NO.	STATE	PROJECT NO.	FISCAL YEAR	SHEET NO.	TOTAL SHEETS
4	IND.	I-03-400	1956	7	23



Earth Work Tabulation
 Fill + 20% 13,980 cu. yds.
 Special Borrow 13,980 cu. yds.
 Grade E Special Borrow 280 cu. yds.

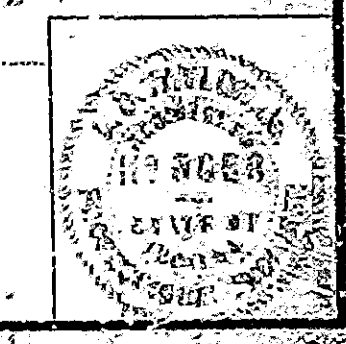
NOTE: This structure on Road Project I-03-4(8)

LAYOUT
CONTINUOUS REINFORCED CONCRETE GIRDER BRIDGE
 4 SPANS: 1@38'-0" 2@65'-0" 1@38'-0" 30'-0" ROADWAY
 OVER U.S. 52 ON STATE ROAD 267
STATE HIGHWAY DEPARTMENT OF INDIANA
 BOONE COUNTY

SCALE: AS NOTED March 12, 1958

SUBMITTED FOR APPROVAL *[Signature]*

DRAWING: C2 OF 11
 PROJECT: I-03-400 STATION: 10+00
 BRIDGE CONTRACT NO. 4415
 BRIDGE FILE: 267-19-4294

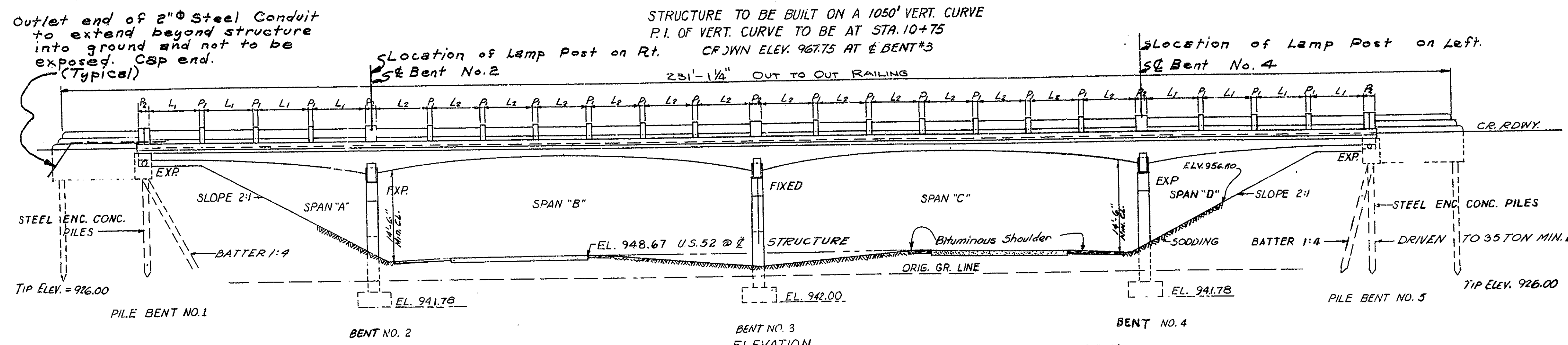


DESIGNED: M.G. CRO.
 DRAWN: R.K. CRO. M.G.
 TRACED: CRO.

Note: See Art. A 203 of Specs. Regarding Test Pit Data.

Note: Field Notes Pages 64, 65, 66, 67, 68, 69, 70, 71, 72, 73, 74, 75, 76, 77, 78, 79, 80, 81, 82, 83, 84, 85, 86, 87, 88, 89, 90, 91, 92, 93, 94, 95, 96, 97, 98, 99, 100, 101, 102, 103, 104, 105, 106, 107, 108, 109, 110, 111, 112, 113, 114, 115, 116, 117, 118, 119, 120, 121, 122, 123, 124, 125, 126, 127, 128, 129, 130, 131, 132, 133, 134, 135, 136, 137, 138, 139, 140, 141, 142, 143, 144, 145, 146, 147, 148, 149, 150, 151, 152, 153, 154, 155, 156, 157, 158, 159, 160, 161, 162, 163, 164, 165, 166, 167, 168, 169, 170, 171, 172, 173, 174, 175, 176, 177, 178, 179, 180, 181, 182, 183, 184, 185, 186, 187, 188, 189, 190, 191, 192, 193, 194, 195, 196, 197, 198, 199, 200, 201, 202, 203, 204, 205, 206, 207, 208, 209, 210, 211, 212, 213, 214, 215, 216, 217, 218, 219, 220, 221, 222, 223, 224, 225, 226, 227, 228, 229, 230, 231, 232, 233, 234, 235, 236, 237, 238, 239, 240, 241, 242, 243, 244, 245, 246, 247, 248, 249, 250, 251, 252, 253, 254, 255, 256, 257, 258, 259, 260, 261, 262, 263, 264, 265, 266, 267, 268, 269, 270, 271, 272, 273, 274, 275, 276, 277, 278, 279, 280, 281, 282, 283, 284, 285, 286, 287, 288, 289, 290, 291, 292, 293, 294, 295, 296, 297, 298, 299, 300, 301, 302, 303, 304, 305, 306, 307, 308, 309, 310, 311, 312, 313, 314, 315, 316, 317, 318, 319, 320, 321, 322, 323, 324, 325, 326, 327, 328, 329, 330, 331, 332, 333, 334, 335, 336, 337, 338, 339, 340, 341, 342, 343, 344, 345, 346, 347, 348, 349, 350, 351, 352, 353, 354, 355, 356, 357, 358, 359, 360, 361, 362, 363, 364, 365, 366, 367, 368, 369, 370, 371, 372, 373, 374, 375, 376, 377, 378, 379, 380, 381, 382, 383, 384, 385, 386, 387, 388, 389, 390, 391, 392, 393, 394, 395, 396, 397, 398, 399, 400, 401, 402, 403, 404, 405, 406, 407, 408, 409, 410, 411, 412, 413, 414, 415, 416, 417, 418, 419, 420, 421, 422, 423, 424, 425, 426, 427, 428, 429, 430, 431, 432, 433, 434, 435, 436, 437, 438, 439, 440, 441, 442, 443, 444, 445, 446, 447, 448, 449, 450, 451, 452, 453, 454, 455, 456, 457, 458, 459, 460, 461, 462, 463, 464, 465, 466, 467, 468, 469, 470, 471, 472, 473, 474, 475, 476, 477, 478, 479, 480, 481, 482, 483, 484, 485, 486, 487, 488, 489, 490, 491, 492, 493, 494, 495, 496, 497, 498, 499, 500, 501, 502, 503, 504, 505, 506, 507, 508, 509, 510, 511, 512, 513, 514, 515, 516, 517, 518, 519, 520, 521, 522, 523, 524, 525, 526, 527, 528, 529, 530, 531, 532, 533, 534, 535, 536, 537, 538, 539, 540, 541, 542, 543, 544, 545, 546, 547, 548, 549, 550, 551, 552, 553, 554, 555, 556, 557, 558, 559, 560, 561, 562, 563, 564, 565, 566, 567, 568, 569, 570, 571, 572, 573, 574, 575, 576, 577, 578, 579, 580, 581, 582, 583, 584, 585, 586, 587, 588, 589, 590, 591, 592, 593, 594, 595, 596, 597, 598, 599, 600, 601, 602, 603, 604, 605, 606, 607, 608, 609, 610, 611, 612, 613, 614, 615, 616, 617, 618, 619, 620, 621, 622, 623, 624, 625, 626, 627, 628, 629, 630, 631, 632, 633, 634, 635, 636, 637, 638, 639, 640, 641, 642, 643, 644, 645, 646, 647, 648, 649, 650, 651, 652, 653, 654, 655, 656, 657, 658, 659, 660, 661, 662, 663, 664, 665, 666, 667, 668, 669, 670, 671, 672, 673, 674, 675, 676, 677, 678, 679, 680, 681, 682, 683, 684, 685, 686, 687, 688, 689, 690, 691, 692, 693, 694, 695, 696, 697, 698, 699, 700, 701, 702, 703, 704, 705, 706, 707, 708, 709, 710, 711, 712, 713, 714, 715, 716, 717, 718, 719, 720, 721, 722, 723, 724, 725, 726, 727, 728, 729, 730, 731, 732, 733, 734, 735, 736, 737, 738, 739, 740, 741, 742, 743, 744, 745, 746, 747, 748, 749, 750, 751, 752, 753, 754, 755, 756, 757, 758, 759, 760, 761, 762, 763, 764, 765, 766, 767, 768, 769, 770, 771, 772, 773, 774, 775, 776, 777, 778, 779, 780, 781, 782, 783, 784, 785, 786, 787, 788, 789, 790, 791, 792, 793, 794, 795, 796, 797, 798, 799, 800, 801, 802, 803, 804, 805, 806, 807, 808, 809, 810, 811, 812, 813, 814, 815, 816, 817, 818, 819, 820, 821, 822, 823, 824, 825, 826, 827, 828, 829, 830, 831, 832, 833, 834, 835, 836, 837, 838, 839, 840, 841, 842, 843, 844, 845, 846, 847, 848, 849, 850, 851, 852, 853, 854, 855, 856, 857, 858, 859, 860, 861, 862, 863, 864, 865, 866, 867, 868, 869, 870, 871, 872, 873, 874, 875, 876, 877, 878, 879, 880, 881, 882, 883, 884, 885, 886, 887, 888, 889, 890, 891, 892, 893, 894, 895, 896, 897, 898, 899, 900, 901, 902, 903, 904, 905, 906, 907, 908, 909, 910, 911, 912, 913, 914, 915, 916, 917, 918, 919, 920, 921, 922, 923, 924, 925, 926, 927, 928, 929, 930, 931, 932, 933, 934, 935, 936, 937, 938, 939, 940, 941, 942, 943, 944, 945, 946, 947, 948, 949, 950, 951, 952, 953, 954, 955, 956, 957, 958, 959, 960, 961, 962, 963, 964, 965, 966, 967, 968, 969, 970, 971, 972, 973, 974, 975, 976, 977, 978, 979, 980, 981, 982, 983, 984, 985, 986, 987, 988, 989, 990, 991, 992, 993, 994, 995, 996, 997, 998, 999, 1000.

BRIDGES OVER 20' SPAN					
PUB. ROAD NO.	STATE	PROJECT NO.	FISCAL YEAR	SHEET NO.	TOTAL SHEETS
4	IND.	I-03-4(10)	1958	8	23

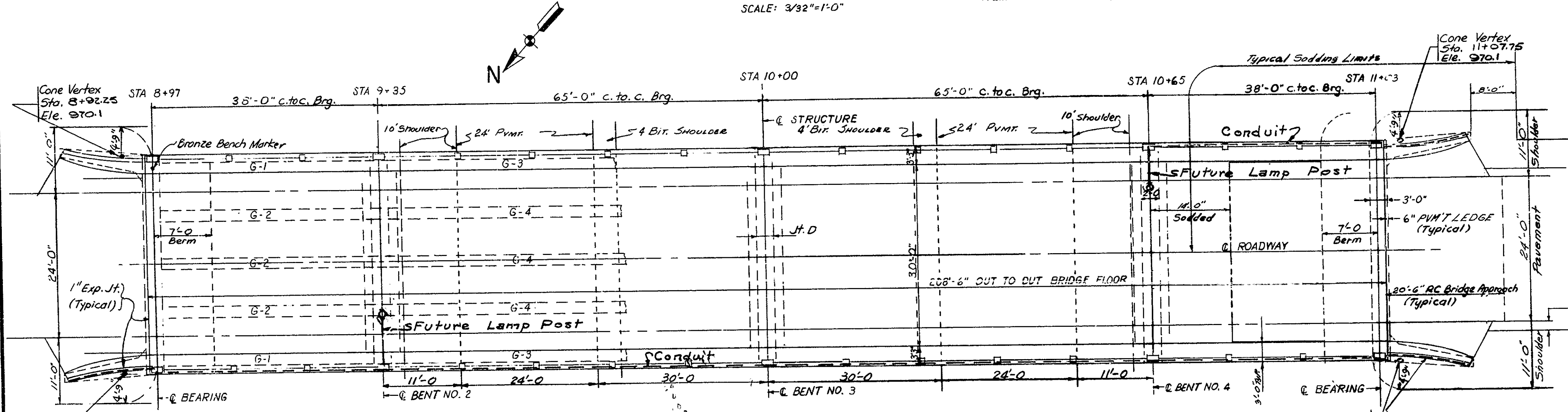


GENERAL NOTES

- No present structure at proposed bridge site.
- Depth of footings to be extended if found necessary. See Art. B 403.2 (a) of specifications.
- Piles shall have minimum bearing value shown on detail drawings. Determine pile lengths by Art. F 203.
- For details of steel encased concrete piles see Bridge Standard C.1. the special provisions and applicable articles in the specifications.
- Piles shall be driven to elevation on plans or below if necessary to obtain desired bearing.
- Reinforcing steel covering shall be 1 inch in floor slabs 3 inches in footings, except bottom steel which shall be 4 inches, and 2 inches in all other parts unless noted.
- Dimensions on bending diagrams for reinforcing bars are measured out to out of bars.
- Concrete in footings & collision walls to be Class "B".
- Concrete in superstructure, including railing and bent caps to be Class "F".
- Concrete in structure not noted above, and in steel encased concrete piles to be Class "D".
- Continuous concrete pours shall be required between construction joint as shown on detail plans.
- Bevel forms 2" under coatings; and chamfer exposed edges 1 inch unless noted.
- Tolerance in position of steel encased concrete pile head maximum 2 inches.
- 3" expansion joint to be placed in approach pavement as specified in Sheet A Standard Pavement Joints.
- All railings to be constructed perpendicular to grade.
- 6" traffic lane stripe to be placed along centerline roadway on bridge floor and pavement.
- See special provisions for items included in this contract.

JOINT LEGEND

Jt "D" indicates 2" preformed exp. material under front 3" of girder bearing area.
1" Exp. Jt. (See Br. Std. C)



BILL OF MATERIALS (FOR LIGHTING INSTALLATION)

2" Steel Conduit 294 Lin. Ft.
Reinforcing Steel 212 Lbs.
Anchor Rods AR2a & Ea

For Additional Lighting
Details See Br. Std. R2.

PLAN

SCALE: 3/32" = 1'-0"

NOTE: R.C. Bridge Approach, 1" Exp. Jt., 3" Exp. Jt., R.C.C. Pmnt. not included in this contract.

TYPICAL CROSS SECTION

See Sheet #2

DESIGN DATA

DESIGNED FOR H20-S16-44 LOADING IN ACCORDANCE WITH 1953 AASHO SPECIFICATION EXCEPT FLOOR SLAB DESIGNED FOR 16000 LB. WHEEL LOAD. END SPAN CHECKED FOR SPECIAL MILITARY LOADING

AVERAGE DAILY TRAFFIC - 518
AVERAGE DAILY TRAFFIC (PROJECTED) 1208

STANDARD DRAWINGS

- Bridge Std. C1 Std. Misc. Details (Rev. 6-3-57) (Rev. 3-20-53)
- Bridge Std. H1 Tip Details of Tied Pile and Location of Slope around End Bent
- Bridge Std. S1 Tip Details for Placing Sp. Fill Mat'l. (Rev. 9-2-52)
- Bridge Std. M1 Misc. Approach Details (Rev. 6-3-57)
- Bridge Std. M2 Misc. Approach Details (Rev. 6-3-57)
- Bridge Std. M3 Misc. Approach Details (9-25-57)

GENERAL PLAN

CONTINUOUS REINFORCED CONCRETE GIRDER BRIDGE

4 SPANS: 1 @ 38'-0" 2 @ 65'-0" 1 @ 38'-0" 30'-0" ROADWAY
OVER U.S. 52 ON STATE ROAD 267

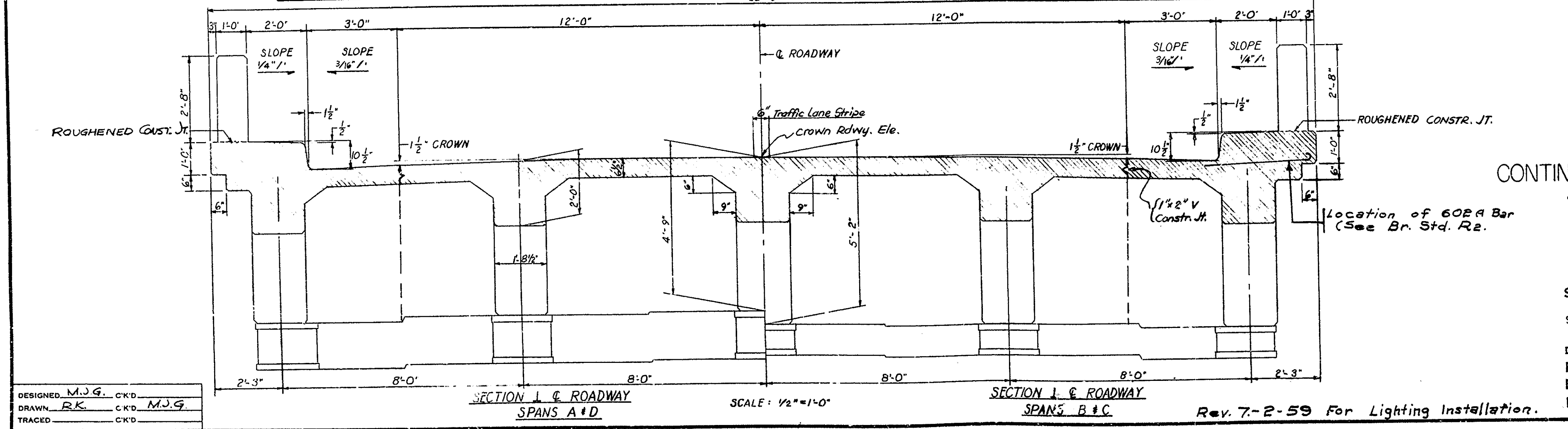
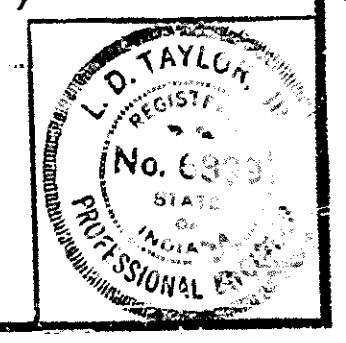
STATE HIGHWAY DEPARTMENT OF INDIANA
BOONE COUNTY

SCALE: - AS NOTED

MARCH 12, 1958

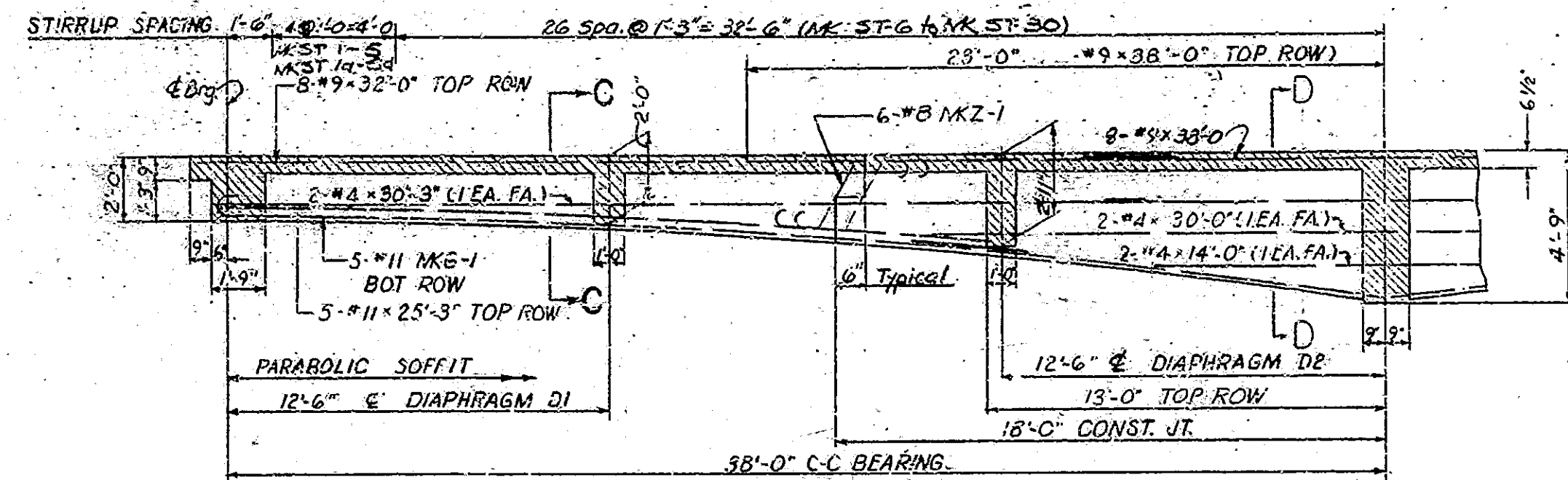
SUBMITTED FOR APPROVAL: *L. D. Taylor Jr.*

DRAWING: C3 OF 11
PROJECT: I-03-4(10) STATION: 10+00
BRIDGE CONTRACT NO. 4415
BRIDGE FILE: 267-E9-4294

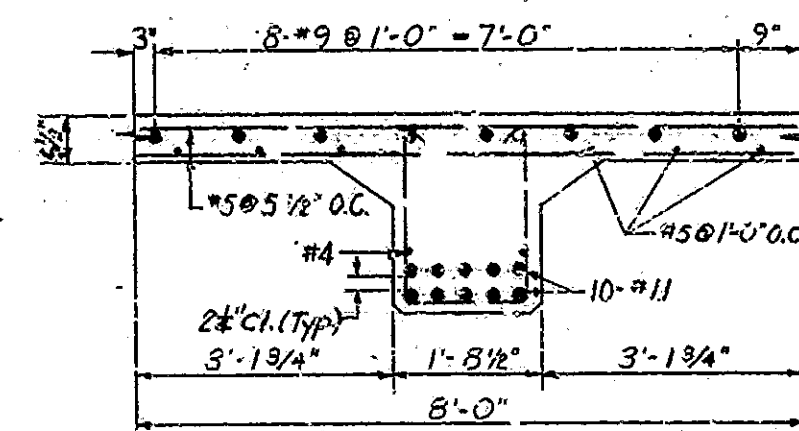


DESIGNED: M.J.G. CKD
DRAWN: R.K. CKD M.J.G.
TRACED: CKD

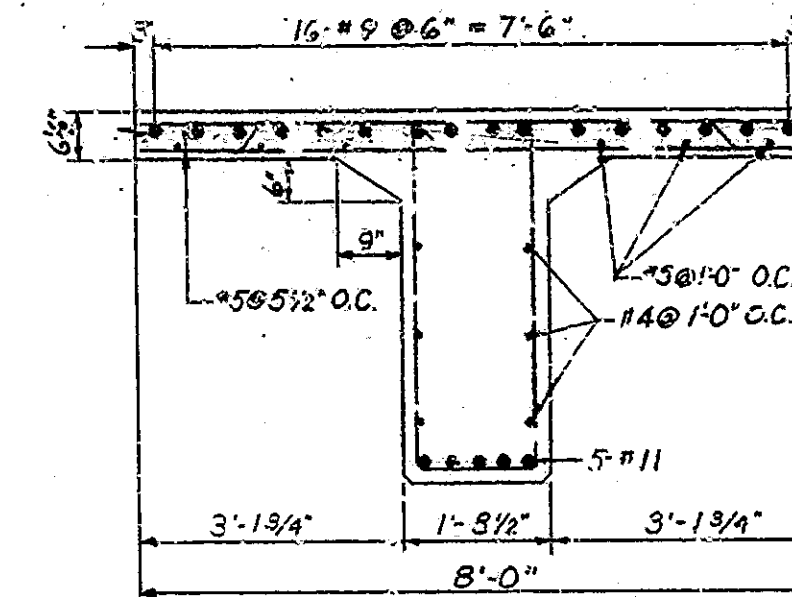
FEDERAL ROAD DISTRICT NO.	STATE	PROJ. NO.	FISCAL YEAR	SHEET NO.	TOTAL SHEETS
4	IND.	1-03-400	1958	11	23



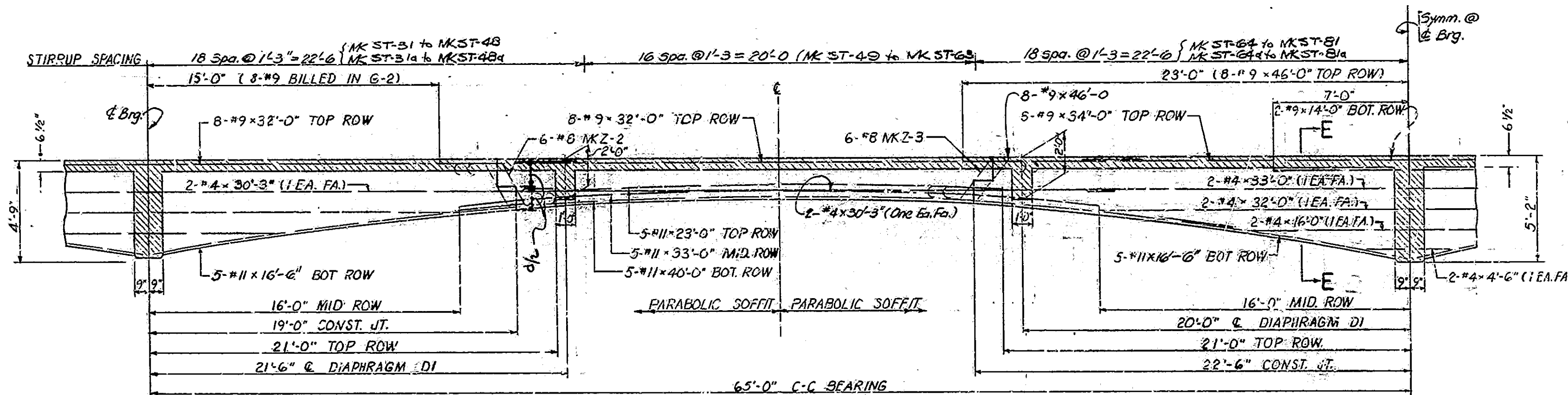
GIRDER G-2 (16 REQ'D)
SCALE: 1/4" = 1'-0"



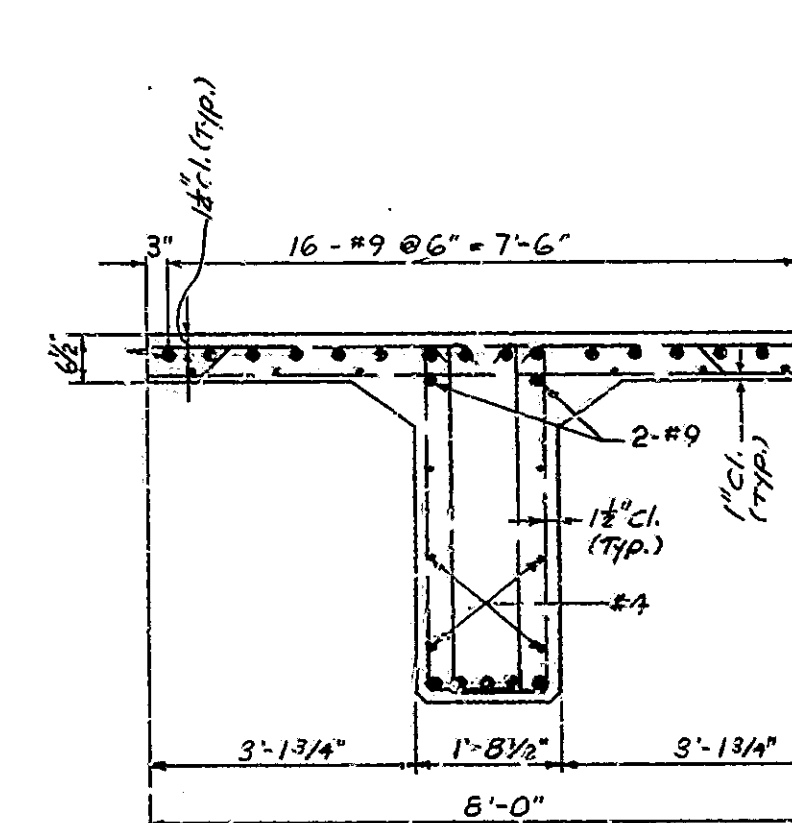
SECTION C-C
SCALE: 1/2" = 1'-0"



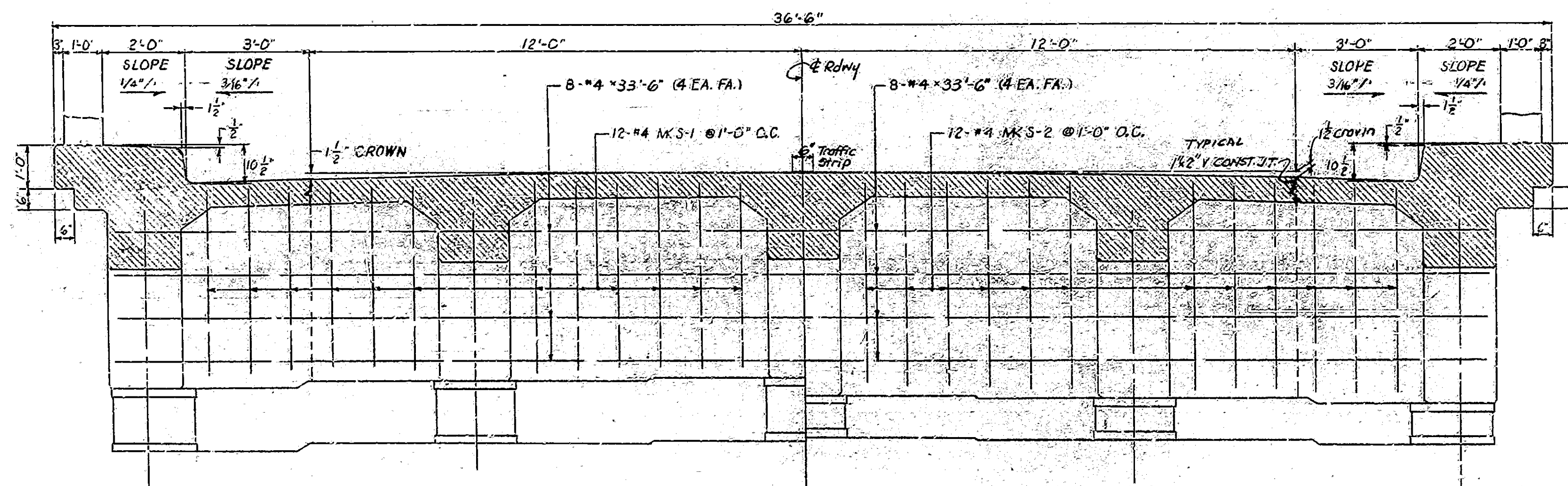
SECTION D-D
SCALE: 1/2" = 1'-0"



GIRDER G-4 (16 REQ'D)
SCALE: 1/4" = 1'-0"



SECTION E-E
SCALE: 1/2" = 1'-0"



HALF SECTION A-A
@ PIERS 2 & 4

HALF SECTION B-B
@ PIER 3

ROADWAY SECTION & DIAPHRAGM
INTERIOR SPANS
SCALE: 1/2" = 1'-0"

DESIGN DATA

Unit Stresses: $f_s = 20,000$ psi
 $f_c = 1,200$ psi
 Live load H-20-S16-44 with distribution of loads in accordance with 1953 AASHTO Specifications. Dead load increased 15#/sq.ft. of roadway for future wearing surface. Slab designed with 1/4" wearing surface. Maximum dead load deflection = 1/16 inch.

NOTE: See Sheet #9 for Reinforcing Bar Notes.

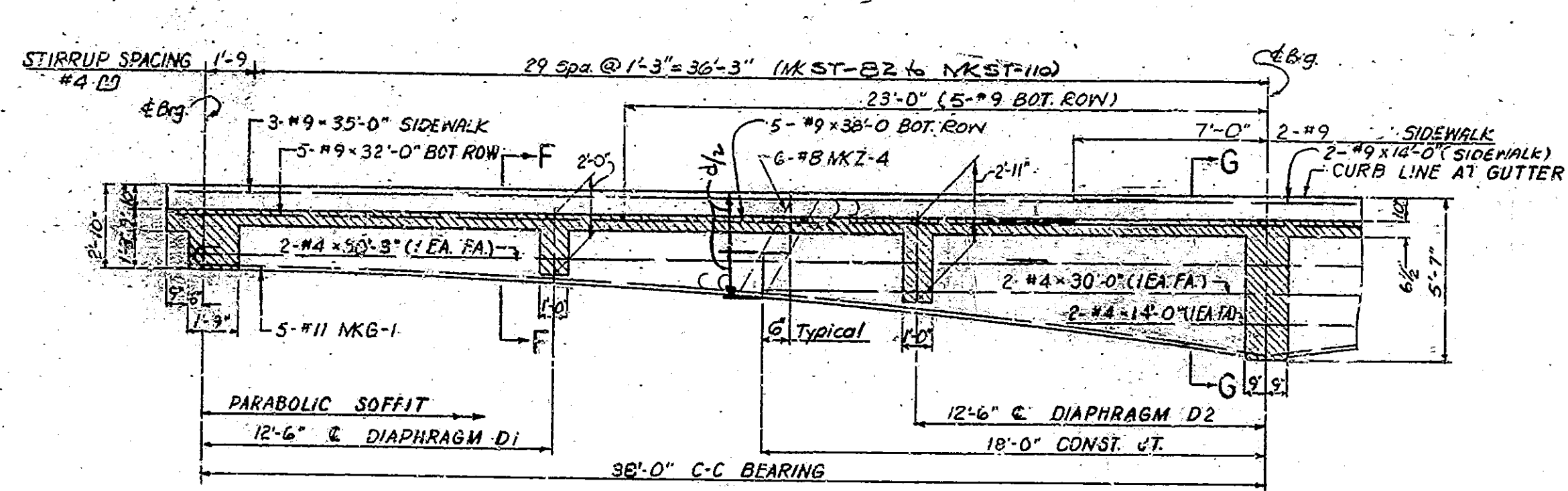
SUPERSTRUCTURE
DETAILS

MARCH 12, 1958

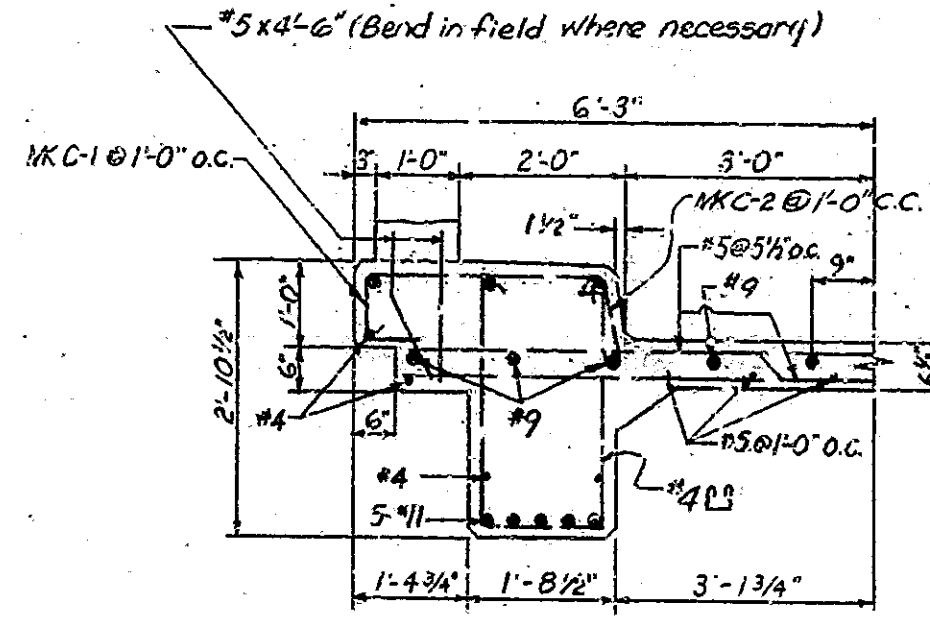
DRAWING - C6 OF 11
 PROJECT - I-03-4100 STATION - 10+00
 BRIDGE CONTRACT NO. 4 & 15
 BRIDGE FILE - 267-E9-4294

DESIGNED BY CRG
 DRAWN BY CRG
 TRACED BY CRG

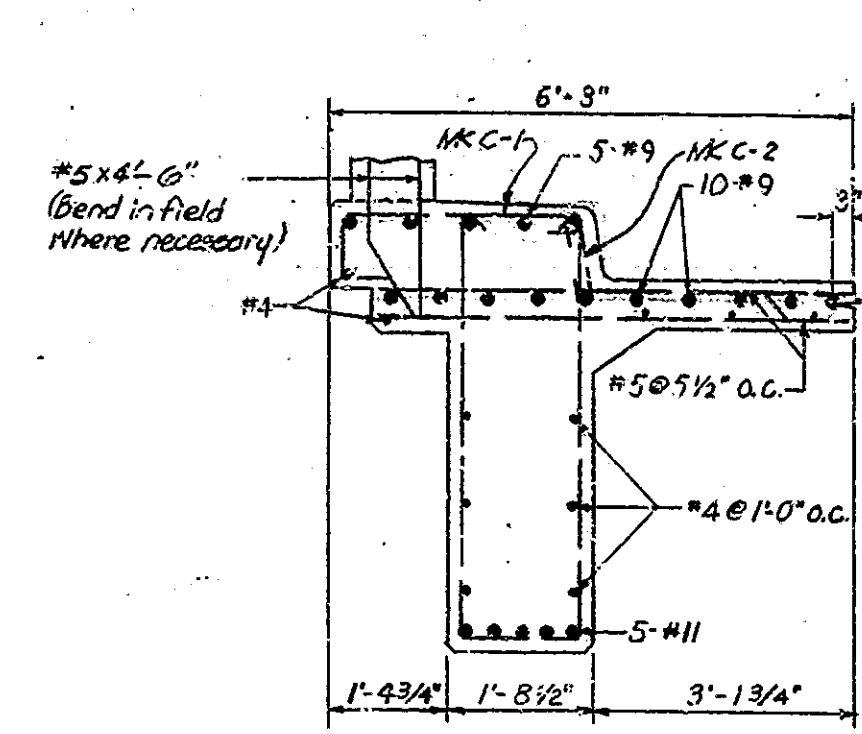
FEDERAL ROAD DIVISION NO.	STATE	PROJ. NO.	FISCAL YEAR	SHEET NO.	TOTAL SHEETS
4	IND.	103-400	1958	12	23



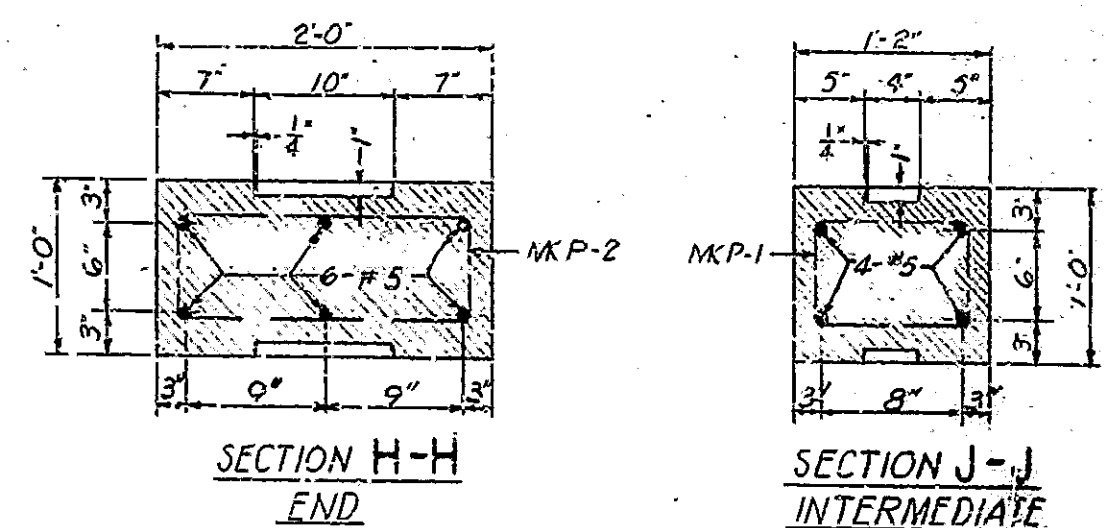
GIRDER G-1 (4 REQ'D)
SCALE: 1/4" = 1'-0"



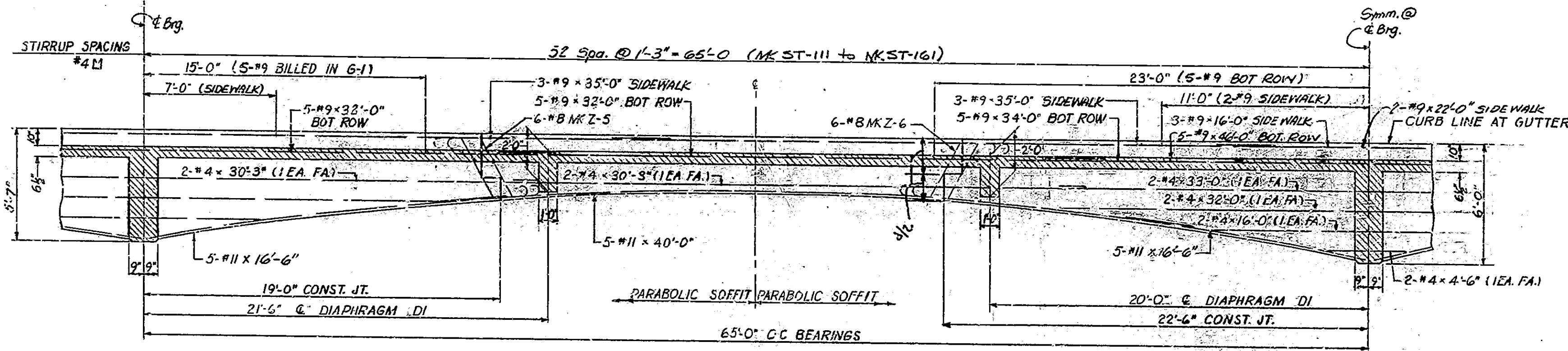
SECTION F-F
SCALE: 1/2" = 1'-0"



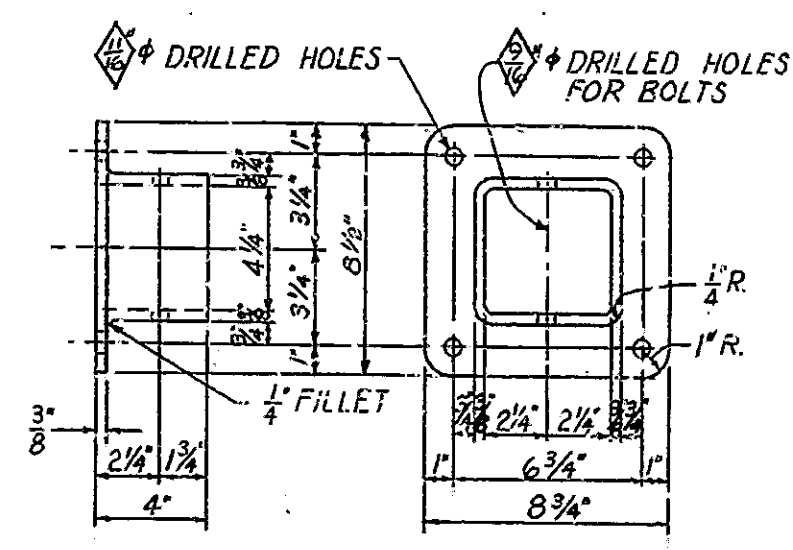
SECTION G-G
SCALE: 1/2" = 1'-0"



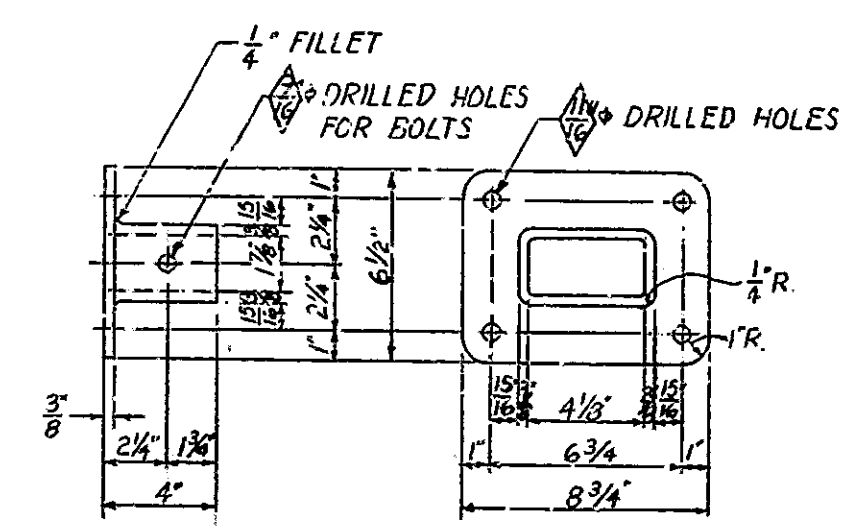
POST SECTIONS
SCALE: 1" = 1'-0"
ANCHOR BOLT DETAILS
NO SCALE



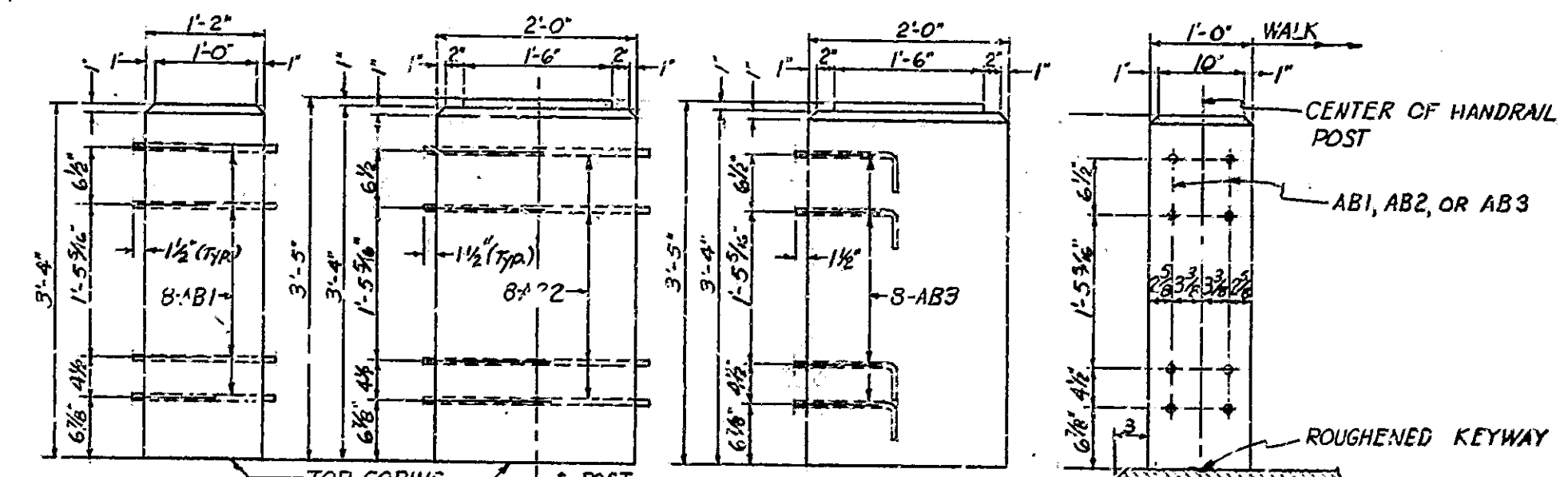
GIRDER G-3 (4 REQ'D)
SCALE: 1/4" = 1'-0"



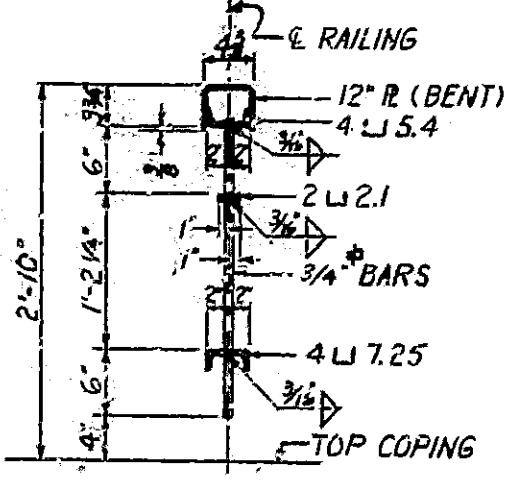
CASTING ca
MALLEABLE IRON
SCALE: 2" = 1'-0"



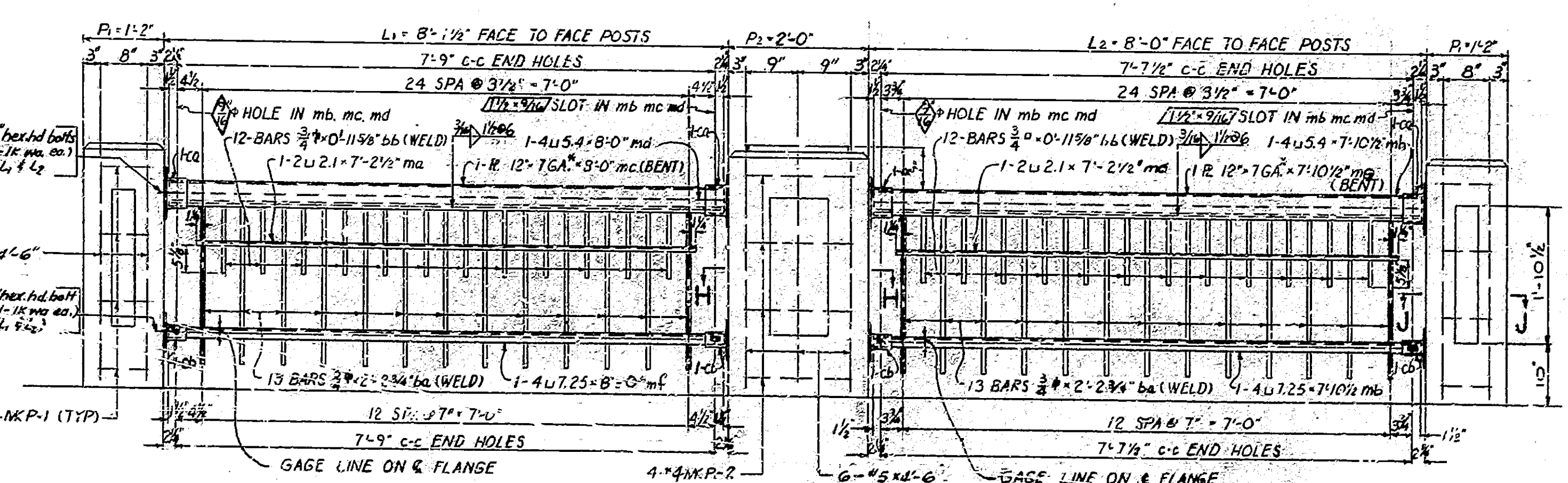
CASTING cb
MALLEABLE IRON
SCALE: 2" = 1'-0"



DETAILS CONCRETE HANDRAIL POSTS SHOWING CONNECTIONS TO STEEL HANDRAIL
SCALE: 3/4" = 1'-0"



TYPICAL SECTION THRU HANDRAIL
SCALE: 3/4" = 1'-0"



TYPICAL HANDRAIL ELEVATION
SCALE: 3/4" = 1'-0"

NOTE: SEE SHEET #9 FOR REINFORCING BAR NOTES.

SUPERSTRUCTURE DETAILS

MARCH 12, 1958

DRAWING: C7 OF 11
PROJECT: I-03-4(10) STATION: -10+00
BRIDGE CONTRACT NO 4A'S
BRIDGE FILE: 267-E9-4294

DESIGNED: M.J.G. C.V.D.
DRAWN: R.K. C.V.D.
TRACED: C.V.D.

PLAN
SCALE: 3/4" = 1'-0"

FEDERAL ROAD DIVISION NO.	STATE	PROJ. NO.	FISCAL YEAR	SHEET NO.	TOTAL SHEETS
2	IND.	402-410	1938	13	23

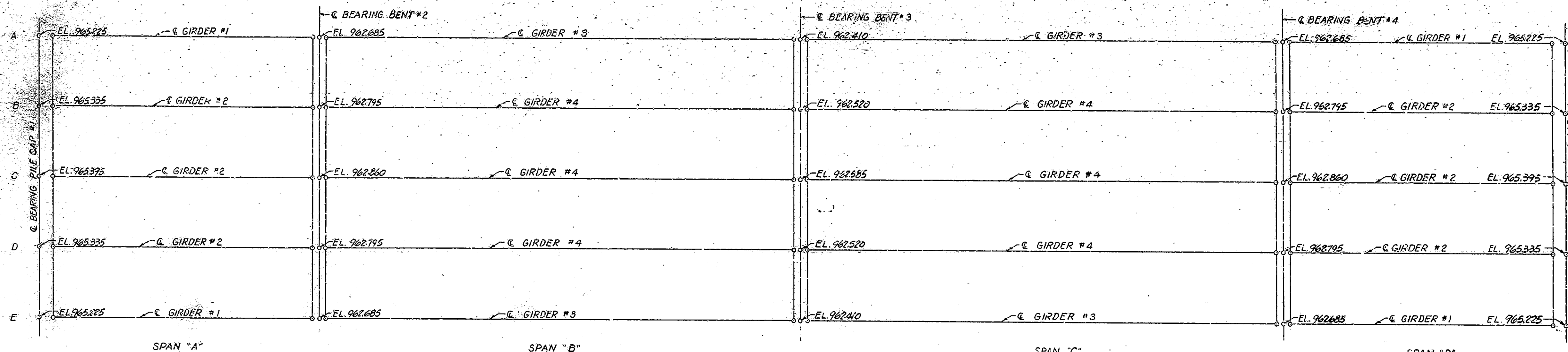
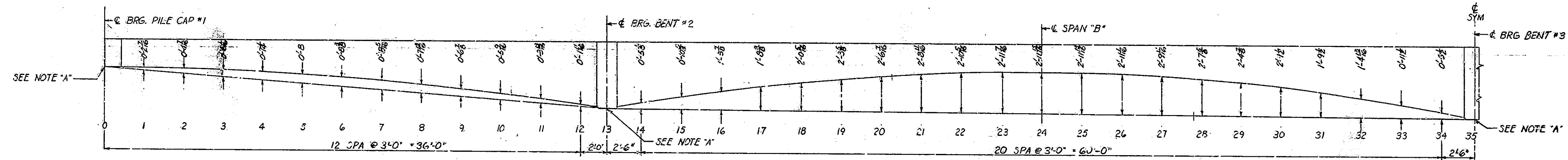
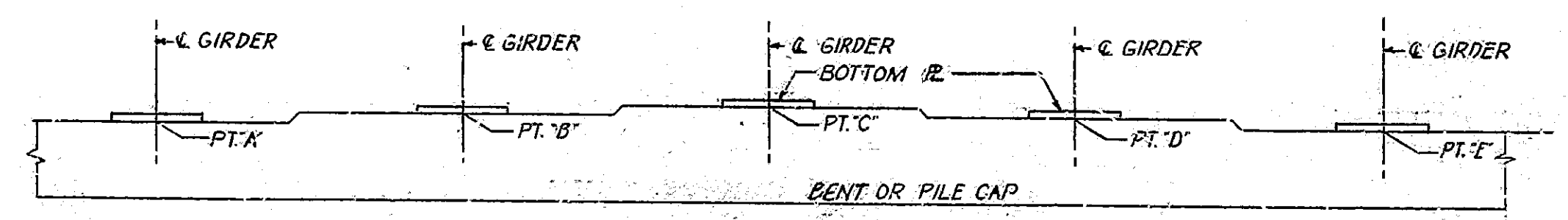


DIAGRAM SHOWING BOTTOM OF GIRDER ELEVATIONS AT C OF BEARING
NOT TO SCALE



PARTIAL LONGITUDINAL SECTION SHOWING GIRDER SOFFIT OFFSETS
SCALE: 1/4" = 1'-0"

NOTE: FOR GIRDER DEPTHS AT NUMBERED POINTS
SEE TABLE II THIS SHEET
NOTE "A": FOR ELEVATIONS OF THE POINTS ON ALL GIRDERS
USE VALUES SHOWN ON LARGE LAYOUT PLAN THIS SHEET



PART ELEVATION OF BENT OR PILE CAP
NOT TO SCALE
FOR ELEVATIONS SEE TABLE I THIS SHEET

POINT	"H"	POINT	"H"
10	2'-0"	18	2'-10 1/8"
1	2'-0 3/4"	19	2'-7"
2	2'-0 1/4"	20	2'-4 1/2"
3	2'-1 7/8"	21	2'-2 1/2"
4	2'-3 3/4"	22	2'-1 1/2"
5	2'-5 1/8"	23	2'-0 1/4"
6	2'-7 3/4"	24	2'-0"
7	2'-10 1/4"	25	2'-0 9/16"
8	3'-1 3/4"	26	2'-1 3/4"
9	3'-4 1/4"	27	2'-2 1/8"
10	3'-8 3/4"	28	2'-5 1/4"
11	4'-0 7/8"	29	2'-8 3/8"
12	4'-5 3/8"	30	2'-11 5/8"
13	4'-9"	31	3'-3 7/8"
14	3'-4 1/4"	32	3'-8 5/8"
15	3'-10 3/4"	33	4'-2 3/4"
16	3'-0"	34	4'-8 3/8"
17	3'-7 3/4"	35	5'-2"

TABLE II

POINT	PILE CAP #1	BENT #2	BENT #3	BENT #4	PILE CAP #5
A	962.485	961.230	961.455	961.230	962.485
B	962.595	961.340	961.565	961.340	962.595
C	962.655	961.400	961.625	961.400	962.655
D	962.595	961.340	961.565	961.340	962.595
E	962.435	961.230	961.455	961.230	962.435

TABLE I

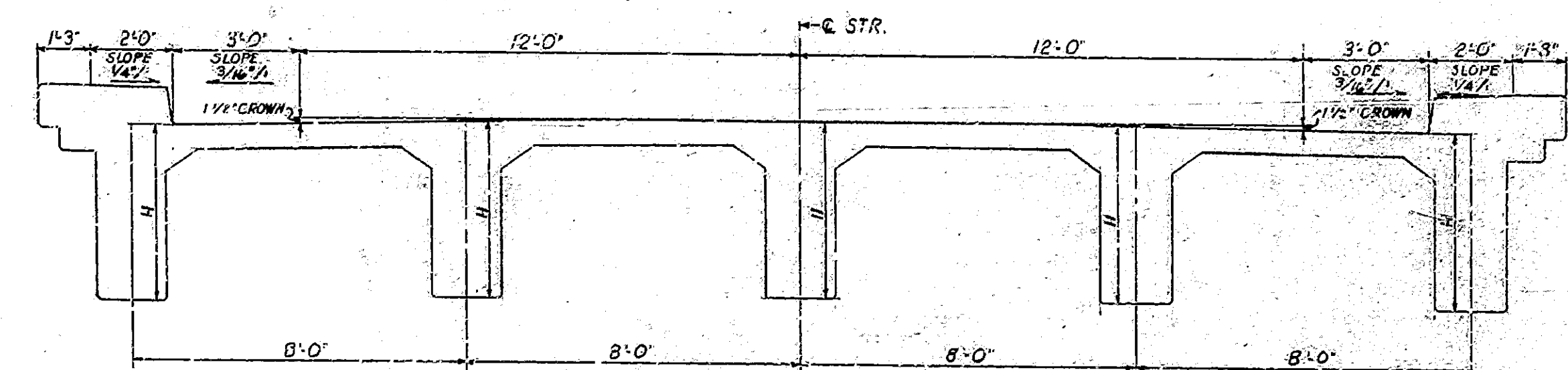


DIAGRAM SHOWING GIRDER DEPTHS
SCALE: 3/8" = 1'-0"

NOTE: FOR DEPTHS "H" SEE TABLE II THIS SHEET

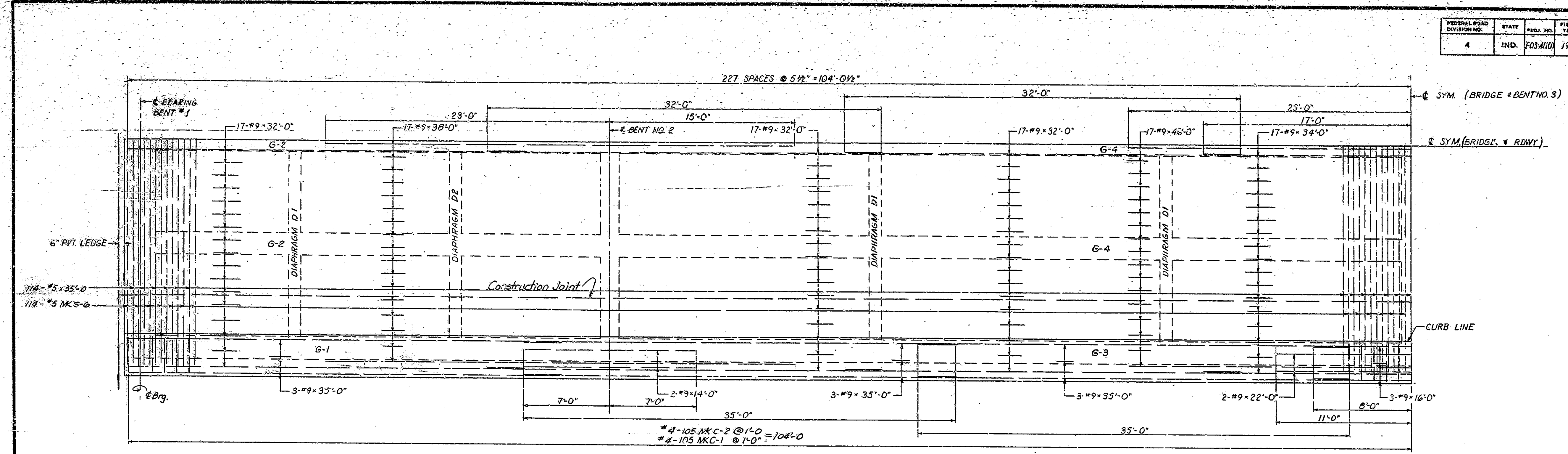
DESIGNED: M.J.G. CVD
DRAWN: R.K. CVD, M.J.G.
CHECKED: CVD

SUPERSTRUCTURE DETAILS

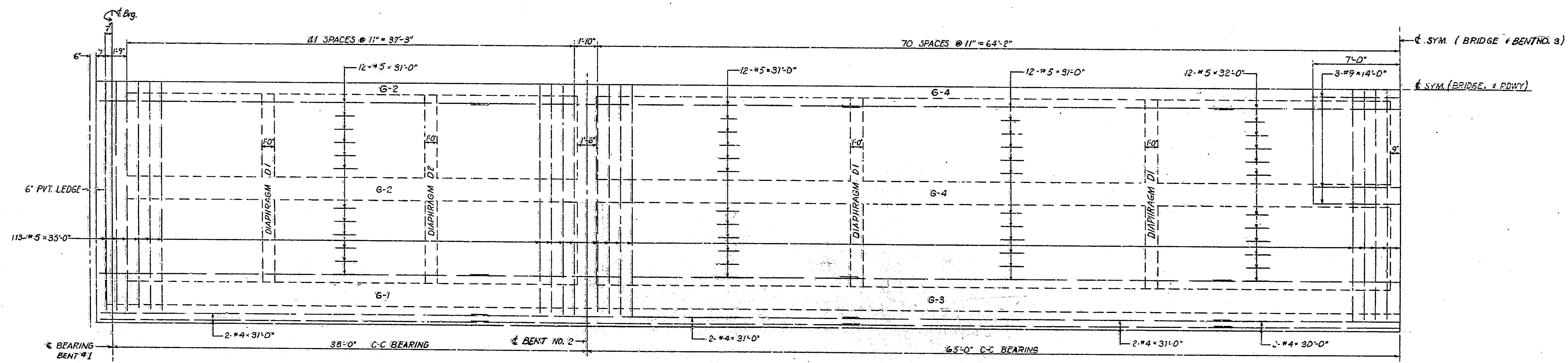
March 12, 1938

DRAWING: C-2 OF 11
PROJECT: 1-02-410 STATION: 10+60
BRIDGE CONTRACT NO. 4415
BRIDGE FILE: 267-E9-4294

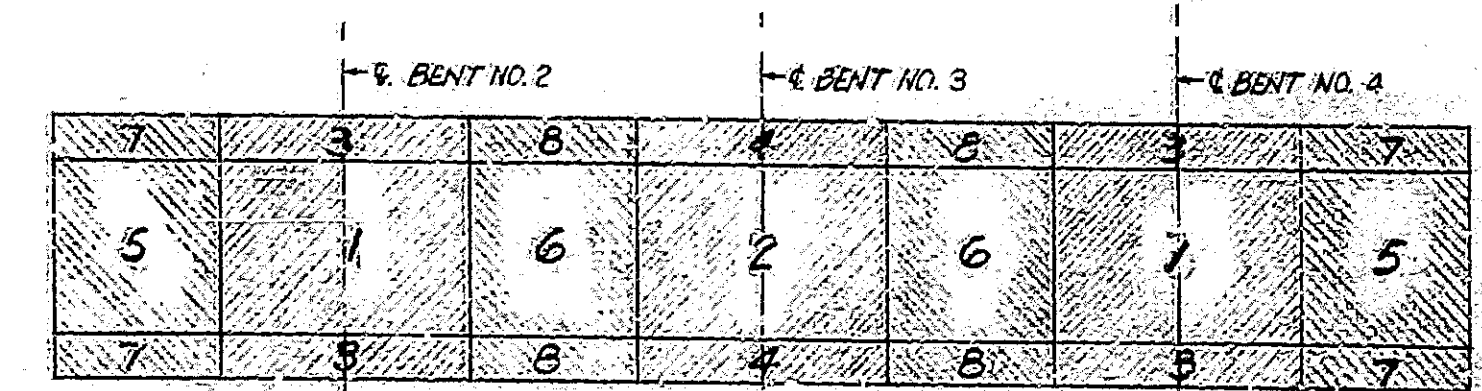
FEDERAL ROAD DIVISION NO.	STATE	PROJ. NO.	FISCAL YEAR	SHEET NO.	TOTAL SHEETS
4	IND.	FOS-410	1958	12	23



QUARTER PLAN SHOWING TOP REINFORCING STEEL FOR ROADWAY SLAB & CURB
SCALE: 1/4" = 1'-0"



QUARTER PLAN SHOWING BOTTOM REINFORCING STEEL FOR ROADWAY SLAB & CURB
SCALE: 1/4" = 1'-0"



POUR DIAGRAM
NOT TO SCALE

NOTE: ENTIRE SUPERSTRUCTURE TO BE FORMED BEFORE POURING.

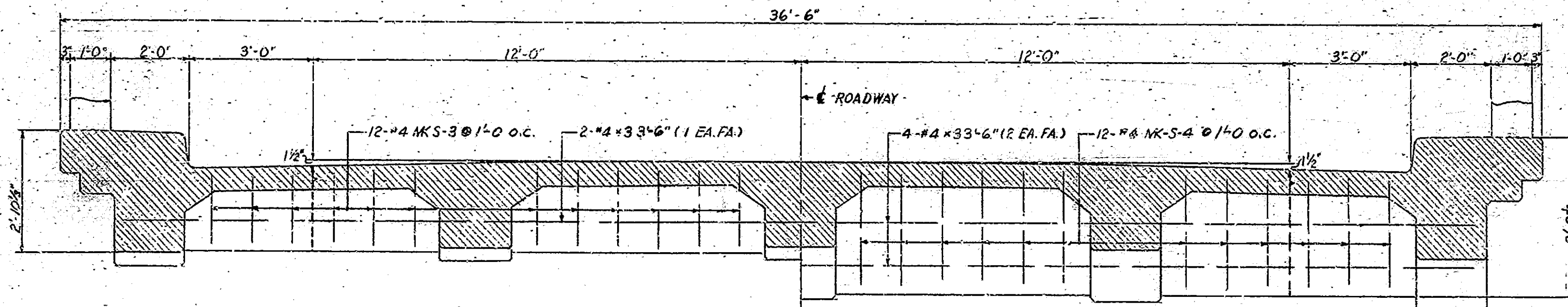
NOTE: FOR REINFORCING BAR NOTES SEE SHEET #9

DESIGNED: M.J.G. S.K.D.
DRAWN: R.K. C.K. M.J.G.
CHECKED: C.R.S.

SUPERSTRUCTURE DETAILS

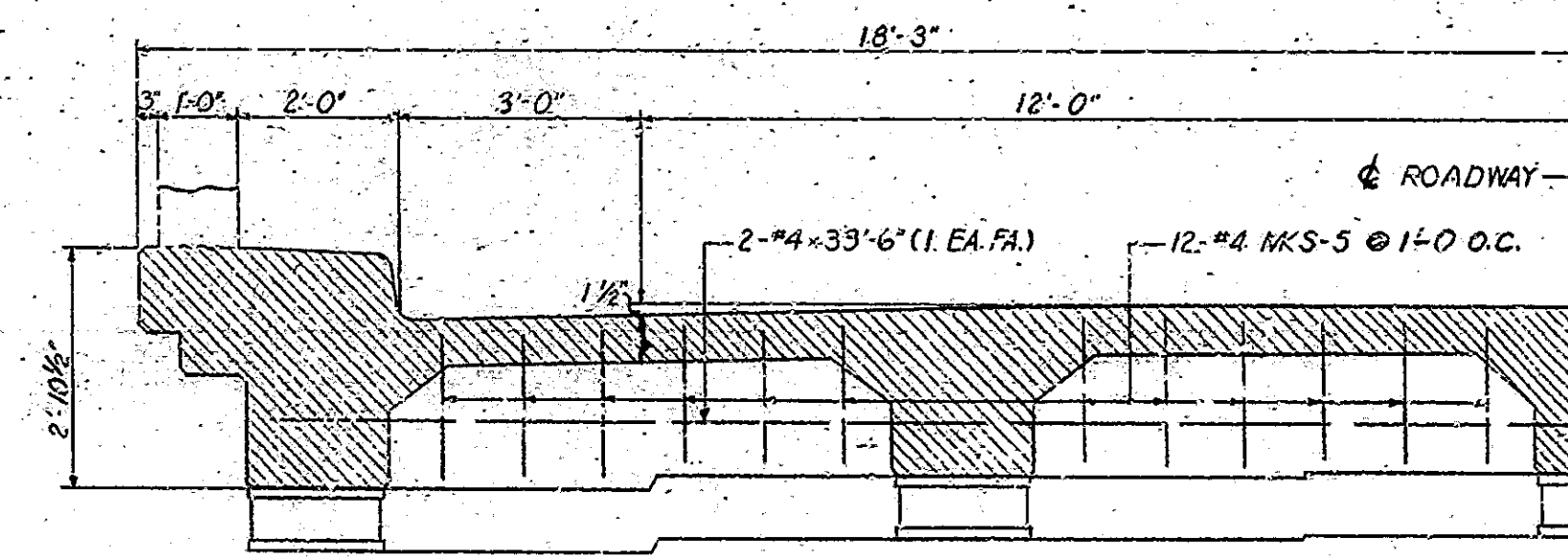
DRAWING: C9 OF 11
PROJECT: I-68-4(10)
BRIDGE CONTRACT NO. 4-15
BRIDGE FILE: 267-E9-4294
STATION: 10+00
Nov. 12, 1958

FEDERAL ROAD DISTRICT (NO.)	STATE	PROJ. NO.	FISCAL YEAR	SHEET NO.	TOTAL SHEETS
4	IND.	1-03-4(10)	1958	15	23



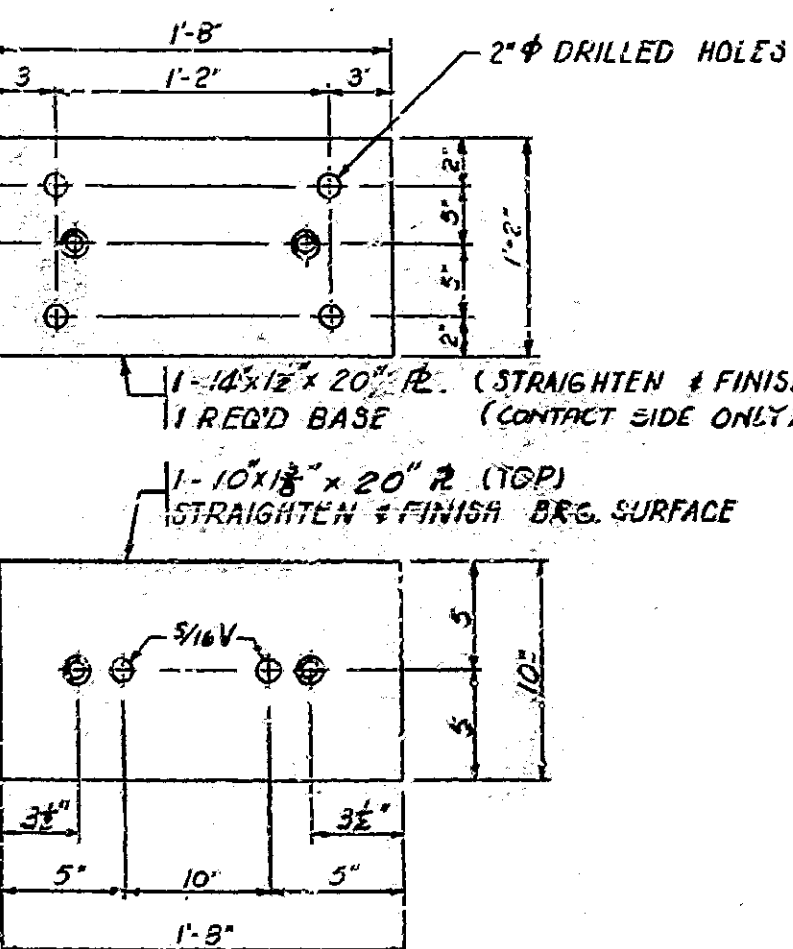
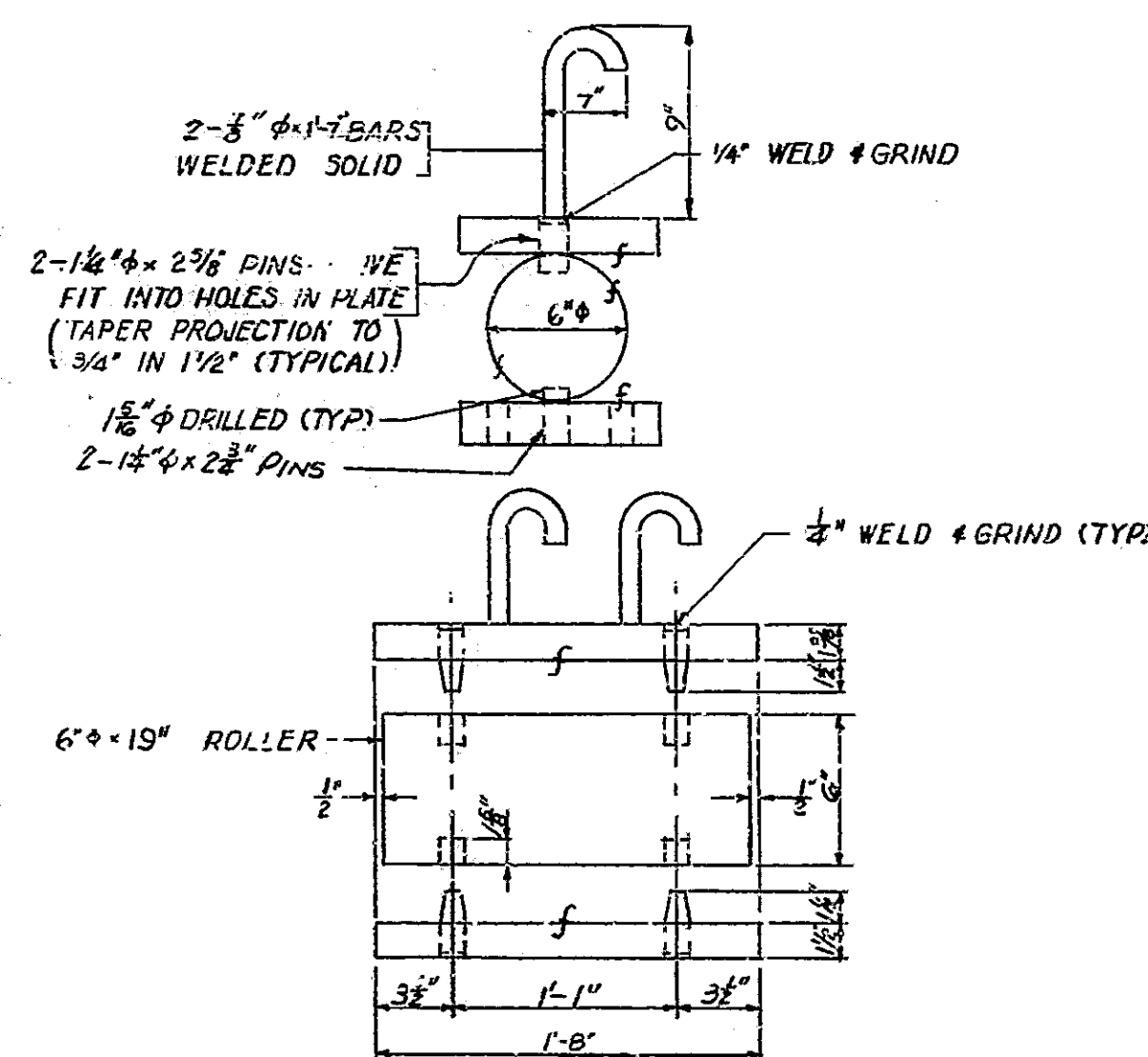
HALF SECTION SHOWING INTERIOR DIAPHRAM D1
(6 REQ'D)

SCALE: 1/2" = 1'-0"

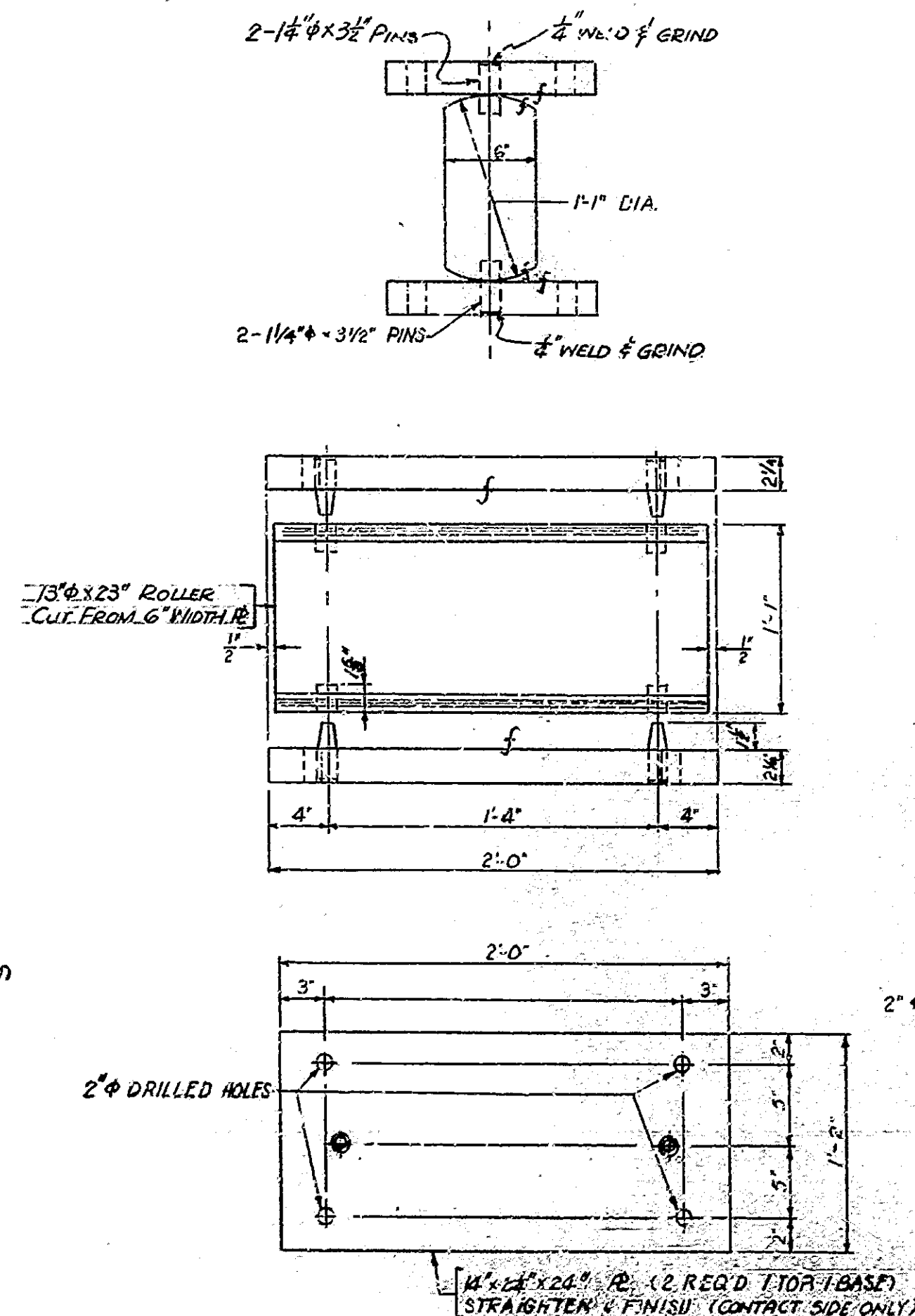


HALF SECTION SHOWING INTERIOR DIAPHRAM D2
(2 REQ'D)

HALF DIAPHRAM ELEVATION AT PILE BENTS 1 & 5
SCALE: 1/2" = 1'-0"

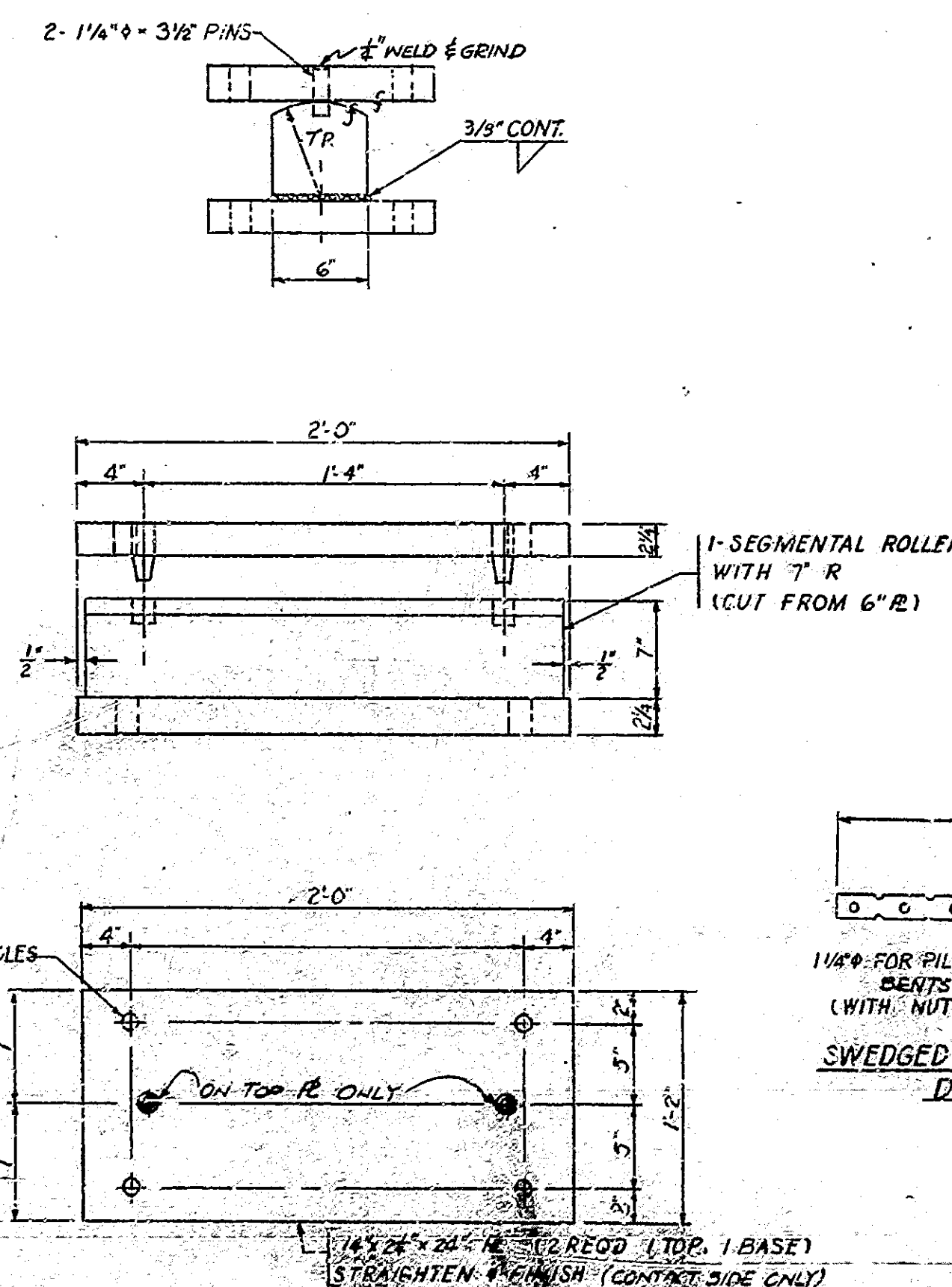


PILE CAPS 1 & 5

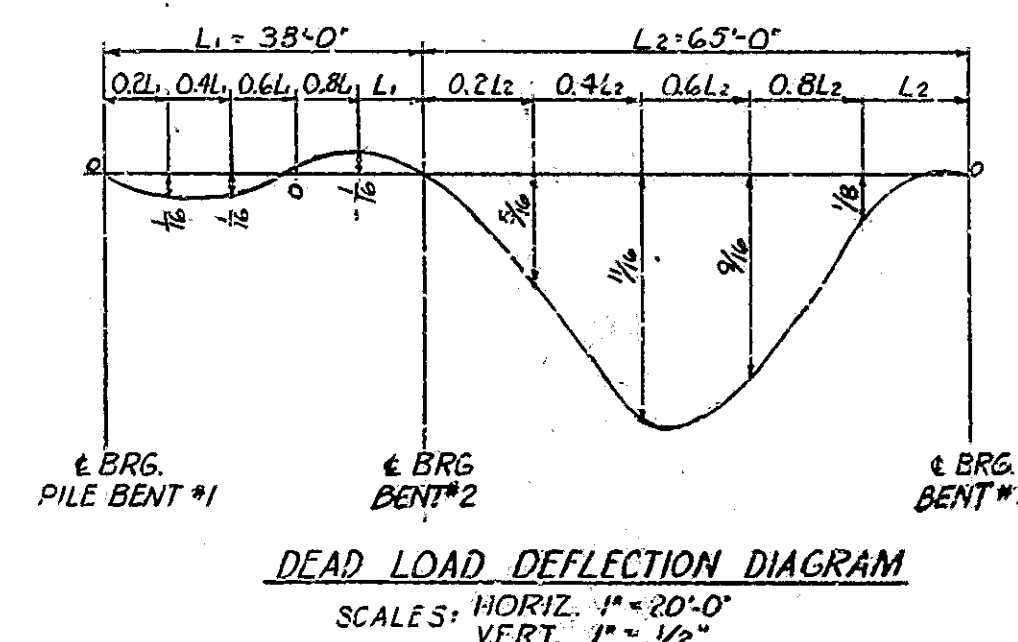
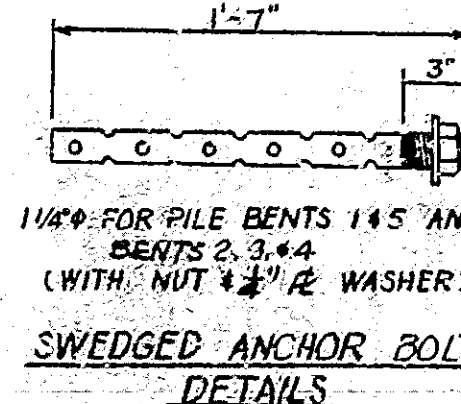


BENTS 2 & 4

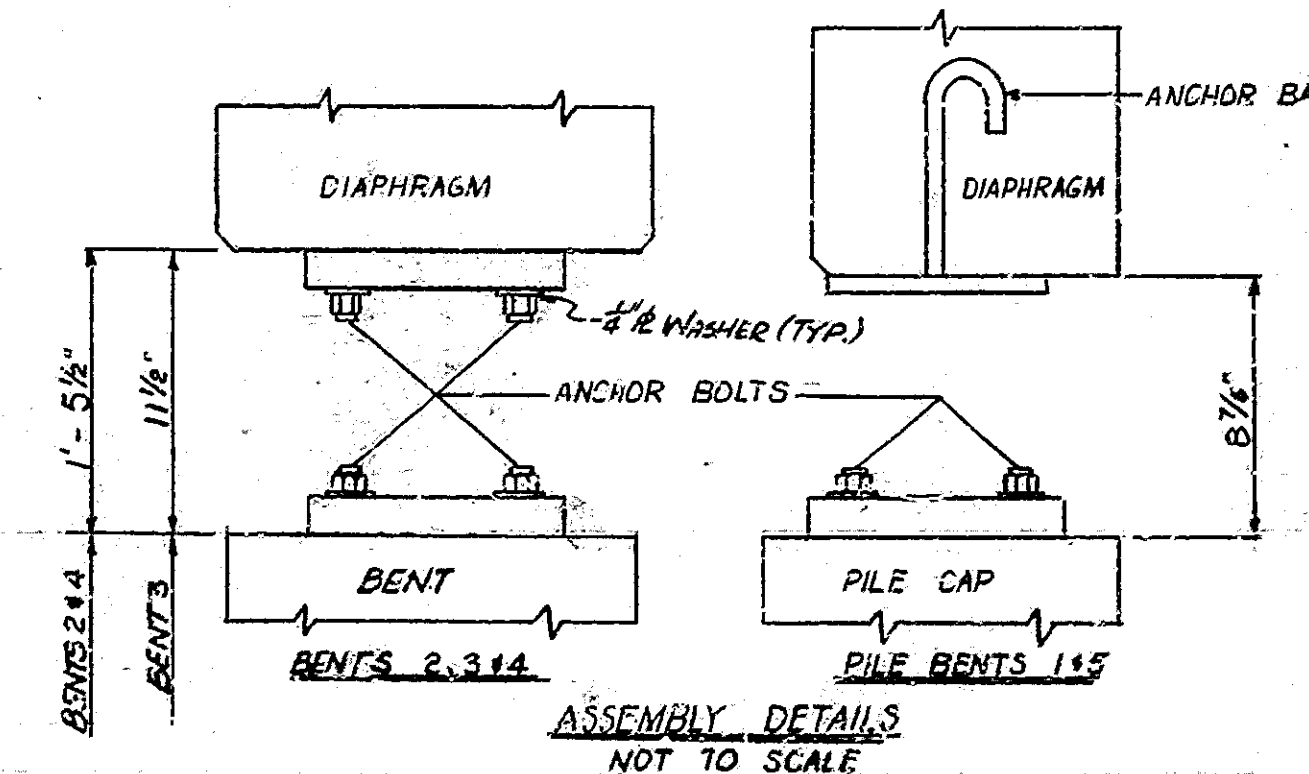
ROLLER DETAILS
NOT TO SCALE



BENT 3



DEAD LOAD DEFLECTION DIAGRAM
SCALE: HORIZ. 1" = 20'-0"
VERT. 1" = 1/2"



ROLLER AND DIAPHRAM

DETAILS

MAR. 12, 1958

DRAWING: C-10F-11
 PROJECT: 1-03-4(10)
 BRIDGE CONTRACT NO. 4415
 BRIDGE FILE: 267-E9-4294

NOTE: FOR REINFORCING BAR NOTES SEE SHEET # 9

DESIGNED: M.J.G. C.R.D.
 DRAWN: C.R.D. M.J.G.
 TRACED: C.R.D.

