

CONTRACT NO. B-9340

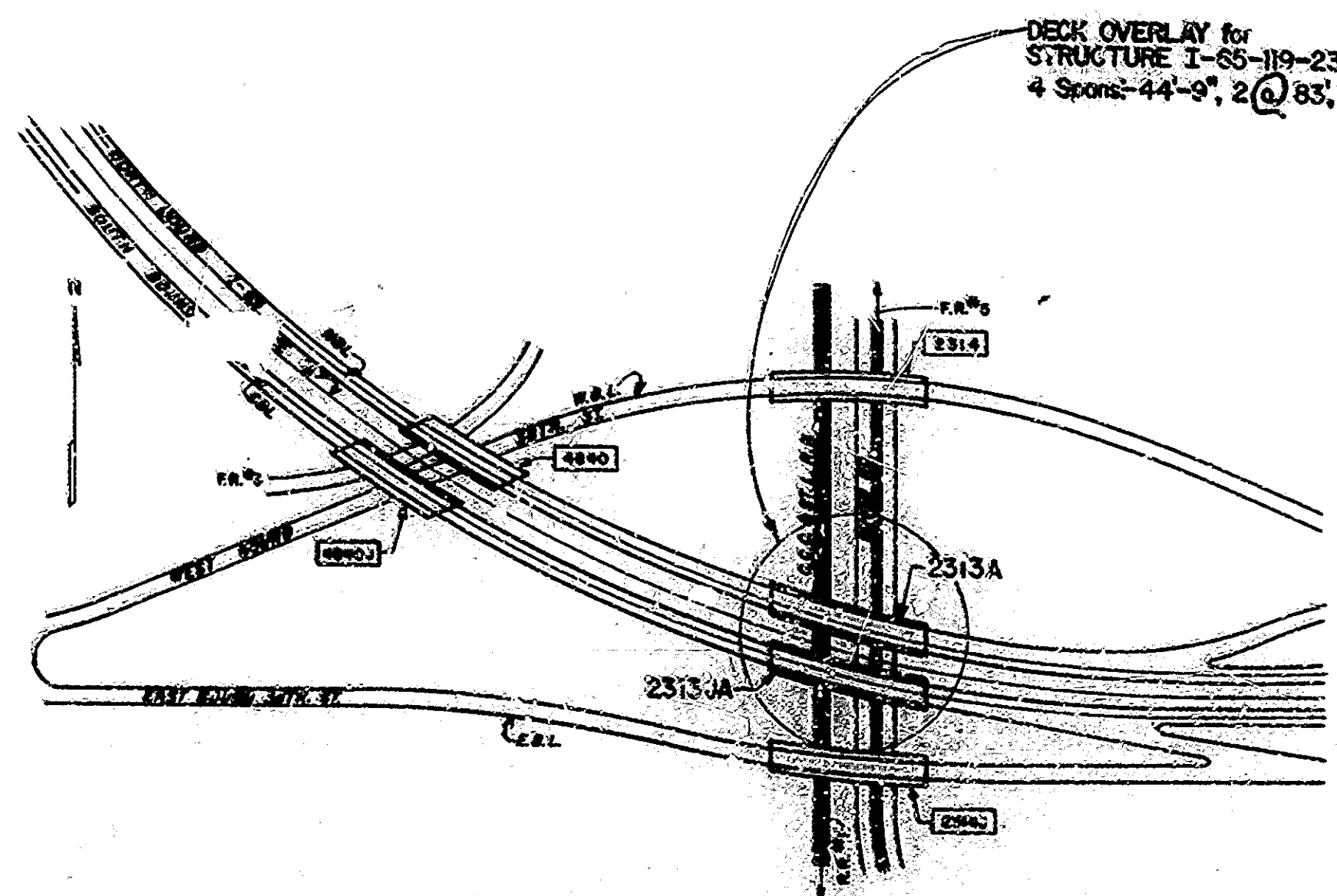
| INDEX | | | | | |
|---------------------|-------------------------|--------------|----------------------------------|---------------------------------|---------------|
| PROJECT | STRUCTURE | TYPE | SPAN | OVER | STATION |
| I-65-119-2313A & JA | | DECK OVERLAY | 4 SPANS: 44'-9", 2 @ 83', 44'-9" | C.C.C. & ST. L. R.R. & GUN ROAD | |
| SHEET DESIGNATION | SUBJECT | | | | DATE APPROVAL |
| 01 | TRAFFIC CONTROL DETAILS | | | | |
| 02 | GENERAL PLAN | | | | |
| 03 | EXPANSION JOINT DETAILS | | | | |
| 04 | DETAILS | | | | |

STATE OF INDIANA
INDIANA STATE HIGHWAY COMMISSION

BRIDGE PLANS FOR SPANS OVER 20 FEET ON INTERSTATE ROAD NO. 65 PROJECT NO.

() P.E.
() R/W
() CONST.

DECK OVERLAY FOR PRESENT STRUCTURE OVER C.C.C. & ST. L. R.R. & GUN ROAD.
SECTION 20—T.16 N.—R.3 E., MARION COUNTY.



| BRIDGES OVER 20' SPAN | | | | | |
|-----------------------|-------|-------------|------|-----|--------------|
| COUNT | STATE | PROJECT NO. | YEAR | NO. | TOTAL SHEETS |
| 5 | IND. | | 1973 | 1 | 10 |

| INDEX CONTINUED STANDARD DRAWINGS | | | | | |
|--------------------------------------|-------------------------------|---------|----------|---------------------|--|
| SHEET NO. | SHEET DESIGNATION | SUBJECT | FORM NO. | ADDITIONAL REVISION | |
| BRIDGE STD. 101 | ALUMINUM ROSS R. #8 | | | | |
| BRIDGE STD. 102 | 2" CHANNEL IRON PLATE DETAILS | | | | |
| BRIDGE STD. 103 | STEEL TUBES | | | | |
| BRIDGE STD. 104 | STEEL TUBES | | | | |
| BRIDGE STD. 105 | STEEL TUBES | | | | |
| BRIDGE STD. 106 | STEEL TUBES | | | | |
| BRIDGE STD. 107 | STEEL TUBES | | | | |
| BRIDGE STD. 108 | STEEL TUBES | | | | |
| BRIDGE STD. 109 | STEEL TUBES | | | | |
| BRIDGE STD. 110 | STEEL TUBES | | | | |
| BRIDGE STD. 111 | STEEL TUBES | | | | |
| BRIDGE STD. 112 | STEEL TUBES | | | | |
| BRIDGE STD. 113 | STEEL TUBES | | | | |
| BRIDGE STD. 114 | STEEL TUBES | | | | |
| BRIDGE STD. 115 | STEEL TUBES | | | | |
| BRIDGE STD. 116 | STEEL TUBES | | | | |
| BRIDGE STD. 117 | STEEL TUBES | | | | |
| BRIDGE STD. 118 | STEEL TUBES | | | | |
| BRIDGE STD. 119 | STEEL TUBES | | | | |
| BRIDGE STD. 120 | STEEL TUBES | | | | |
| BRIDGE STD. 121 | STEEL TUBES | | | | |
| BRIDGE STD. 122 | STEEL TUBES | | | | |
| BRIDGE STD. 123 | STEEL TUBES | | | | |
| BRIDGE STD. 124 | STEEL TUBES | | | | |
| BRIDGE STD. 125 | STEEL TUBES | | | | |
| BRIDGE STD. 126 | STEEL TUBES | | | | |
| BRIDGE STD. 127 | STEEL TUBES | | | | |
| BRIDGE STD. 128 | STEEL TUBES | | | | |
| BRIDGE STD. 129 | STEEL TUBES | | | | |
| BRIDGE STD. 130 | STEEL TUBES | | | | |
| BRIDGE STD. 131 | STEEL TUBES | | | | |
| BRIDGE STD. 132 | STEEL TUBES | | | | |
| BRIDGE STD. 133 | STEEL TUBES | | | | |
| BRIDGE STD. 134 | STEEL TUBES | | | | |
| BRIDGE STD. 135 | STEEL TUBES | | | | |
| BRIDGE STD. 136 | STEEL TUBES | | | | |
| BRIDGE STD. 137 | STEEL TUBES | | | | |
| BRIDGE STD. 138 | STEEL TUBES | | | | |
| BRIDGE STD. 139 | STEEL TUBES | | | | |
| BRIDGE STD. 140 | STEEL TUBES | | | | |
| BRIDGE STD. 141 | STEEL TUBES | | | | |
| BRIDGE STD. 142 | STEEL TUBES | | | | |
| BRIDGE STD. 143 | STEEL TUBES | | | | |
| BRIDGE STD. 144 | STEEL TUBES | | | | |
| BRIDGE STD. 145 | STEEL TUBES | | | | |
| BRIDGE STD. 146 | STEEL TUBES | | | | |
| BRIDGE STD. 147 | STEEL TUBES | | | | |
| BRIDGE STD. 148 | STEEL TUBES | | | | |
| BRIDGE STD. 149 | STEEL TUBES | | | | |
| BRIDGE STD. 150 | STEEL TUBES | | | | |
| BRIDGE STD. 151 | STEEL TUBES | | | | |
| BRIDGE STD. 152 | STEEL TUBES | | | | |
| BRIDGE STD. 153 | STEEL TUBES | | | | |
| BRIDGE STD. 154 | STEEL TUBES | | | | |
| BRIDGE STD. 155 | STEEL TUBES | | | | |
| BRIDGE STD. 156 | STEEL TUBES | | | | |
| BRIDGE STD. 157 | STEEL TUBES | | | | |
| BRIDGE STD. 158 | STEEL TUBES | | | | |
| BRIDGE STD. 159 | STEEL TUBES | | | | |
| BRIDGE STD. 160 | STEEL TUBES | | | | |
| BRIDGE STD. 161 | STEEL TUBES | | | | |
| BRIDGE STD. 162 | STEEL TUBES | | | | |
| BRIDGE STD. 163 | STEEL TUBES | | | | |
| BRIDGE STD. 164 | STEEL TUBES | | | | |
| BRIDGE STD. 165 | STEEL TUBES | | | | |
| BRIDGE STD. 166 | STEEL TUBES | | | | |
| BRIDGE STD. 167 | STEEL TUBES | | | | |
| BRIDGE STD. 168 | STEEL TUBES | | | | |
| BRIDGE STD. 169 | STEEL TUBES | | | | |
| BRIDGE STD. 170 | STEEL TUBES | | | | |
| BRIDGE STD. 171 | STEEL TUBES | | | | |
| BRIDGE STD. 172 | STEEL TUBES | | | | |
| BRIDGE STD. 173 | STEEL TUBES | | | | |
| BRIDGE STD. 174 | STEEL TUBES | | | | |
| BRIDGE STD. 175 | STEEL TUBES | | | | |
| BRIDGE STD. 176 | STEEL TUBES | | | | |
| BRIDGE STD. 177 | STEEL TUBES | | | | |
| BRIDGE STD. 178 | STEEL TUBES | | | | |
| BRIDGE STD. 179 | STEEL TUBES | | | | |
| BRIDGE STD. 180 | STEEL TUBES | | | | |
| BRIDGE STD. 181 | STEEL TUBES | | | | |
| BRIDGE STD. 182 | STEEL TUBES | | | | |
| BRIDGE STD. 183 | STEEL TUBES | | | | |
| BRIDGE STD. 184 | STEEL TUBES | | | | |
| BRIDGE STD. 185 | STEEL TUBES | | | | |
| BRIDGE STD. 186 | STEEL TUBES | | | | |
| BRIDGE STD. 187 | STEEL TUBES | | | | |
| BRIDGE STD. 188 | STEEL TUBES | | | | |
| BRIDGE STD. 189 | STEEL TUBES | | | | |
| BRIDGE STD. 190 | STEEL TUBES | | | | |
| BRIDGE STD. 191 | STEEL TUBES | | | | |
| BRIDGE STD. 192 | STEEL TUBES | | | | |
| BRIDGE STD. 193 | STEEL TUBES | | | | |
| BRIDGE STD. 194 | STEEL TUBES | | | | |
| BRIDGE STD. 195 | STEEL TUBES | | | | |
| BRIDGE STD. 196 | STEEL TUBES | | | | |
| BRIDGE STD. 197 | STEEL TUBES | | | | |
| BRIDGE STD. 198 | STEEL TUBES | | | | |
| BRIDGE STD. 199 | STEEL TUBES | | | | |
| BRIDGE STD. 200 | STEEL TUBES | | | | |
| BRIDGE STD. 201 | STEEL TUBES | | | | |
| BRIDGE STD. 202 | STEEL TUBES | | | | |
| BRIDGE STD. 203 | STEEL TUBES | | | | |
| BRIDGE STD. 204 | STEEL TUBES | | | | |
| BRIDGE STD. 205 | STEEL TUBES | | | | |
| BRIDGE STD. 206 | STEEL TUBES | | | | |
| BRIDGE STD. 207 | STEEL TUBES | | | | |
| BRIDGE STD. 208 | STEEL TUBES | | | | |
| BRIDGE STD. 209 | STEEL TUBES | | | | |
| BRIDGE STD. 210 | STEEL TUBES | | | | |
| BRIDGE STD. 211 | STEEL TUBES | | | | |
| BRIDGE STD. 212 | STEEL TUBES | | | | |
| BRIDGE STD. 213 | STEEL TUBES | | | | |
| BRIDGE STD. 214 | STEEL TUBES | | | | |
| BRIDGE STD. 215 | STEEL TUBES | | | | |
| BRIDGE STD. 216 | STEEL TUBES | | | | |
| BRIDGE STD. 217 | STEEL TUBES | | | | |
| BRIDGE STD. 218 | STEEL TUBES | | | | |
| BRIDGE STD. 219 | STEEL TUBES | | | | |
| BRIDGE STD. 220 | STEEL TUBES | | | | |
| BRIDGE STD. 221 | STEEL TUBES | | | | |
| BRIDGE STD. 222 | STEEL TUBES | | | | |
| BRIDGE STD. 223 | STEEL TUBES | | | | |
| BRIDGE STD. 224 | STEEL TUBES | | | | |
| BRIDGE STD. 225 | STEEL TUBES | | | | |
| BRIDGE STD. 226 | STEEL TUBES | | | | |
| BRIDGE STD. 227 | STEEL TUBES | | | | |
| BRIDGE STD. 228 | STEEL TUBES | | | | |
| BRIDGE STD. 229 | STEEL TUBES | | | | |
| BRIDGE STD. 230 | STEEL TUBES | | | | |
| BRIDGE STD. 231 | STEEL TUBES | | | | |
| BRIDGE STD. 232 | STEEL TUBES | | | | |
| BRIDGE STD. 233 | STEEL TUBES | | | | |
| BRIDGE STD. 234 | STEEL TUBES | | | | |
| BRIDGE STD. 235 | STEEL TUBES | | | | |
| BRIDGE STD. 236 | STEEL TUBES | | | | |
| BRIDGE STD. 237 | STEEL TUBES | | | | |
| BRIDGE STD. 238 | STEEL TUBES | | | | |
| BRIDGE STD. 239 | STEEL TUBES | | | | |
| BRIDGE STD. 240 | STEEL TUBES | | | | |
| BRIDGE STD. 241 | STEEL TUBES | | | | |
| BRIDGE STD. 242 | STEEL TUBES | | | | |
| BRIDGE STD. 243 | STEEL TUBES | | | | |
| BRIDGE STD. 244 | STEEL TUBES | | | | |
| BRIDGE STD. 245 | STEEL TUBES | | | | |
| BRIDGE STD. 246 | STEEL TUBES | | | | |
| BRIDGE STD. 247 | STEEL TUBES | | | | |
| BRIDGE STD. 248 | STEEL TUBES | | | | |
| BRIDGE STD. 249 | STEEL TUBES | | | | |
| BRIDGE STD. 250 | STEEL TUBES | | | | |
| BRIDGE STD. 251 | STEEL TUBES | | | | |
| BRIDGE STD. 252 | STEEL TUBES | | | | |
| BRIDGE STD. 253 | STEEL TUBES | | | | |
| BRIDGE STD. 254 | STEEL TUBES | | | | |
| BRIDGE STD. 255 | STEEL TUBES | | | | |
| BRIDGE STD. 256 | STEEL TUBES | | | | |
| BRIDGE STD. 257 | STEEL TUBES | | | | |
| BRIDGE STD. 258 | STEEL TUBES | | | | |
| BRIDGE STD. 259 | STEEL TUBES | | | | |
| BRIDGE STD. 260 | STEEL TUBES | | | | |
| BRIDGE STD. 261 | STEEL TUBES | | | | |
| BRIDGE STD. 262 | STEEL TUBES | | | | |
| BRIDGE STD. 263 | STEEL TUBES | | | | |
| BRIDGE STD. 264 | STEEL TUBES | | | | |
| BRIDGE STD. 265 | STEEL TUBES | | | | |
| BRIDGE STD. 266 | STEEL TUBES | | | | |
| BRIDGE STD. 267 | STEEL TUBES | | | | |
| BRIDGE STD. 268 | STEEL TUBES | | | | |
| BRIDGE STD. 269 | STEEL TUBES | | | | |
| BRIDGE STD. 270 | STEEL TUBES | | | | |
| BRIDGE STD. 271 | STEEL TUBES | | | | |
| BRIDGE STD. 272 | STEEL TUBES | | | | |
| BRIDGE STD. 273 | STEEL TUBES | | | | |
| BRIDGE STD. 274 | STEEL TUBES | | | | |
| BRIDGE STD. 275 | STEEL TUBES | | | | |
| BRIDGE STD. 276 | STEEL TUBES | | | | |
| BRIDGE STD. 277 | STEEL TUBES | | | | |
| BRIDGE STD. 278 | STEEL TUBES | | | | |
| BRIDGE STD. 279 | STEEL TUBES | | | | |
| BRIDGE STD. 280 | STEEL TUBES | | | | |
| BRIDGE STD. 281 | STEEL TUBES | | | | |
| BRIDGE STD. 282 | STEEL TUBES | | | | |
| BRIDGE STD. 283 | STEEL TUBES | | | | |
| BRIDGE STD. 284 | STEEL TUBES | | | | |
| BRIDGE STD. 285 | STEEL TUBES | | | | |
| BRIDGE STD. 286 | STEEL TUBES | | | | |
| BRIDGE STD. 287 | STEEL TUBES | | | | |
| BRIDGE STD. 288 | STEEL TUBES | | | | |
| BRIDGE STD. 289 | STEEL TUBES | | | | |
| BRIDGE STD. 290 | STEEL TUBES | | | | |
| BRIDGE STD. 291 | STEEL TUBES | | | | |
| BRIDGE STD. 292 | STEEL TUBES | | | | |
| BRIDGE STD. 293 | STEEL TUBES | | | | |
| BRIDGE STD. 294 | STEEL TUBES | | | | |
| BRIDGE STD. 295 | STEEL TUBES | | | | |
| BRIDGE STD. 296 | STEEL TUBES | | | | |
| BRIDGE STD. 297 | STEEL TUBES | | | | |
| BRIDGE STD. 298 | STEEL TUBES | | | | |
| BRIDGE STD. 299 | STEEL TUBES | | | | |
| BRIDGE STD. 300 | STEEL TUBES | | | | |

| TRAFFIC DATA | | |
|----------------------------|--|---------|
| A.D.T. (24 HRS.) | | V.P.S. |
| A.D.T. (12 HRS. PROJECTED) | | V.P.S. |
| D.N.V. (12 HRS. PROJECTED) | | V.P.S. |
| TRUCKS | | PERCENT |
| DESIGN SPEED | | M.P.H. |
| ACCESS CONTROL | | |

| BRIDGE | LENGTH | NO. | BRIDGE | LENGTH | NO. |
|------------|--------|-----|------------|--------|-----|
| 2313A | 0.049 | MI. | 2313A | 0.049 | MI. |
| ROADWAY | 0.000 | MI. | ROADWAY | 0.000 | MI. |
| TOTAL | 0.049 | MI. | TOTAL | 0.049 | MI. |
| MAX. GRADE | 2.90 | % | MAX. GRADE | 2.7376 | % |

APPROVED 3-21-73
[Signature]
CHIEF HIGHWAY ENGINEER - MARION COUNTY HIGHWAY DEPARTMENT

FEDERAL HIGHWAY ADMINISTRATION
DEPARTMENT OF TRANSPORTATION

APPROVED: _____
DIVISION ENGINEER DATE _____

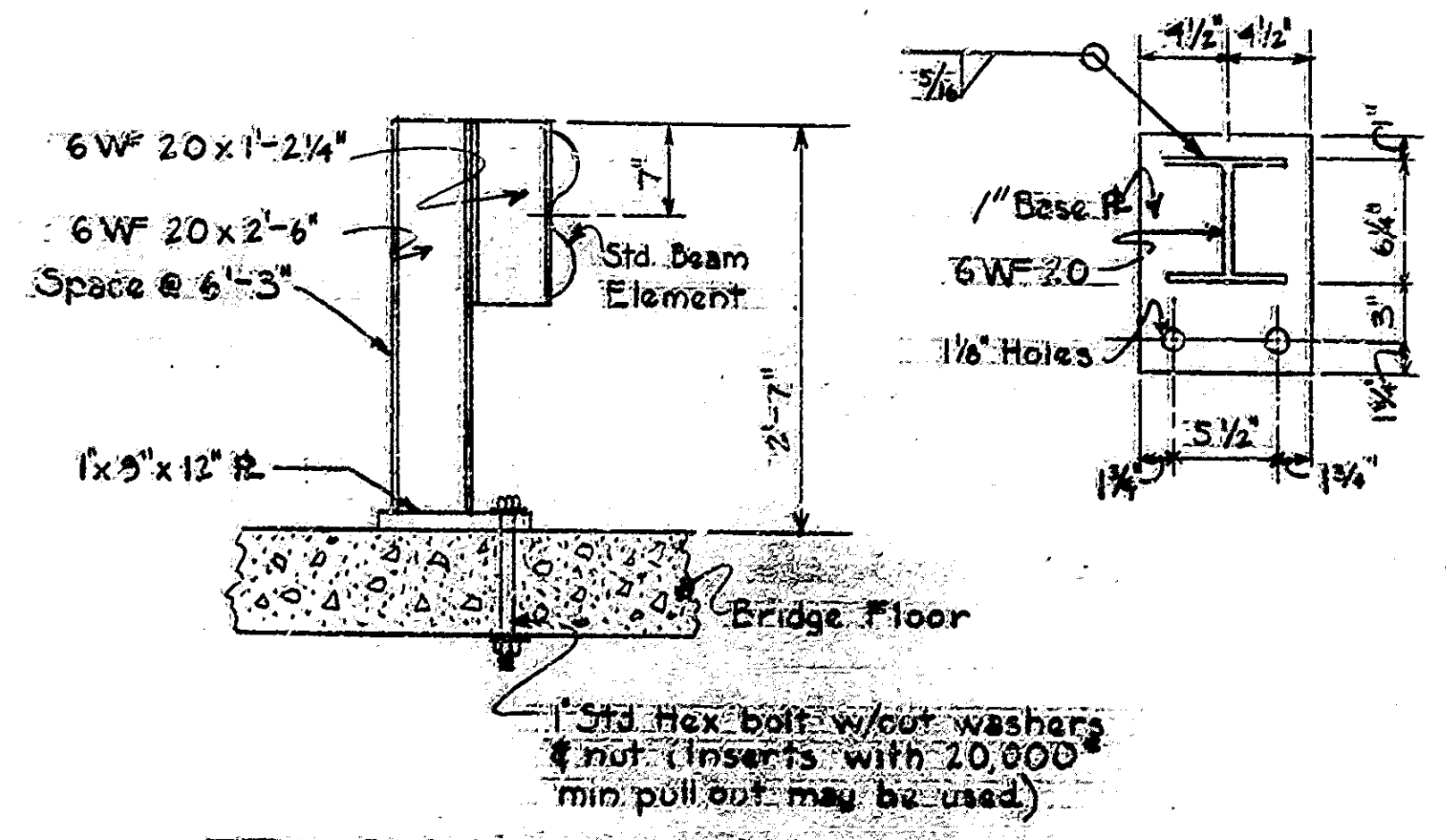
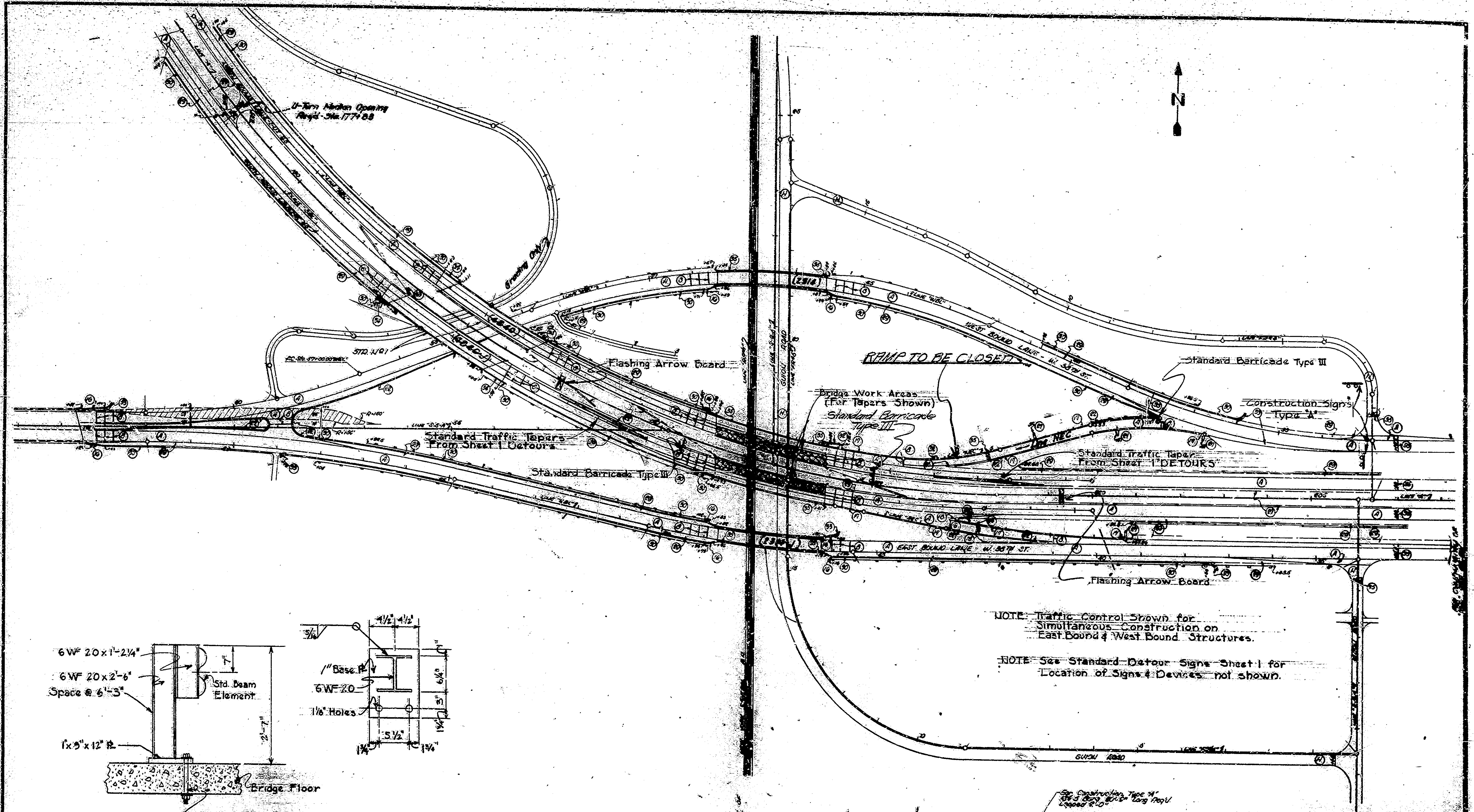
BRIDGE FILE: I-65-119-2313A & JA



RECOMMENDED FOR APPROVAL 3/15/73
[Signature]
CHIEF ENGINEER - MARION COUNTY HIGHWAY DEPARTMENT

| DATE | REVISIONS | BY | NO. |
|------|-----------|----|-----|
| | | | |
| | | | |
| | | | |

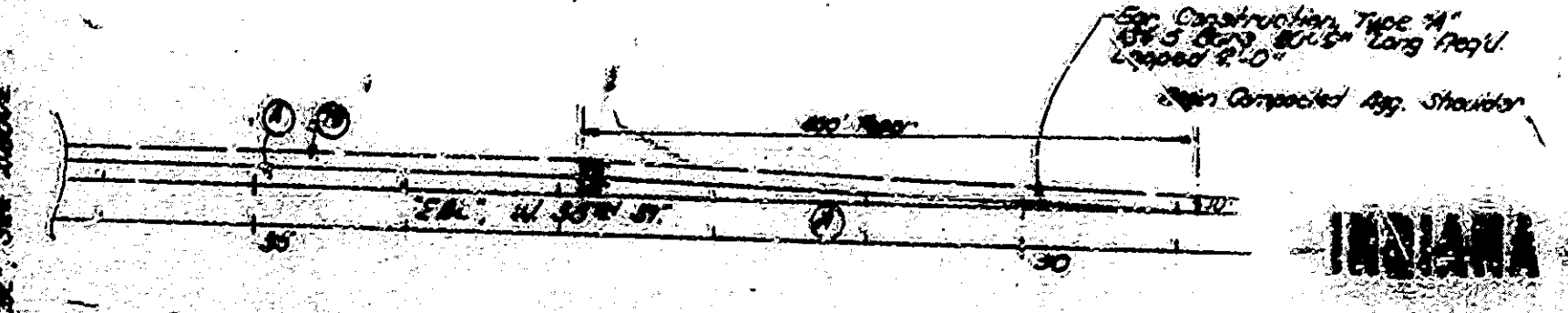
INDIANA STATE HIGHWAY COMMISSION
STANDARD SPECIFICATIONS DATED 1971
TO BE USED WITH THESE PLANS.



NOTE: For details not shown see Std. Sheet GR2

NOTE: Traffic Control Shown for Simultaneous Construction on East Bound & West Bound Structures.

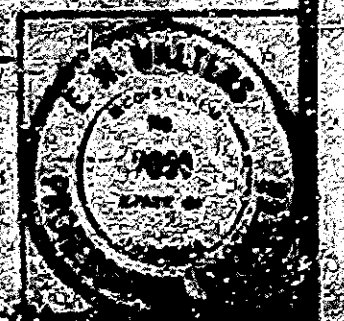
NOTE: See Standard Detour Sign Sheet 1 for Location of Signs & Devices not shown.



INDIANA STATE HIGHWAY COMMISSION

SCALE: NO SCALE DATE: 11/10/50

DRAWING OF SHEET 2 OF 10
 PROJECT: 340
 CONTRACT NO. 340
 BRIDGE FILE: 340

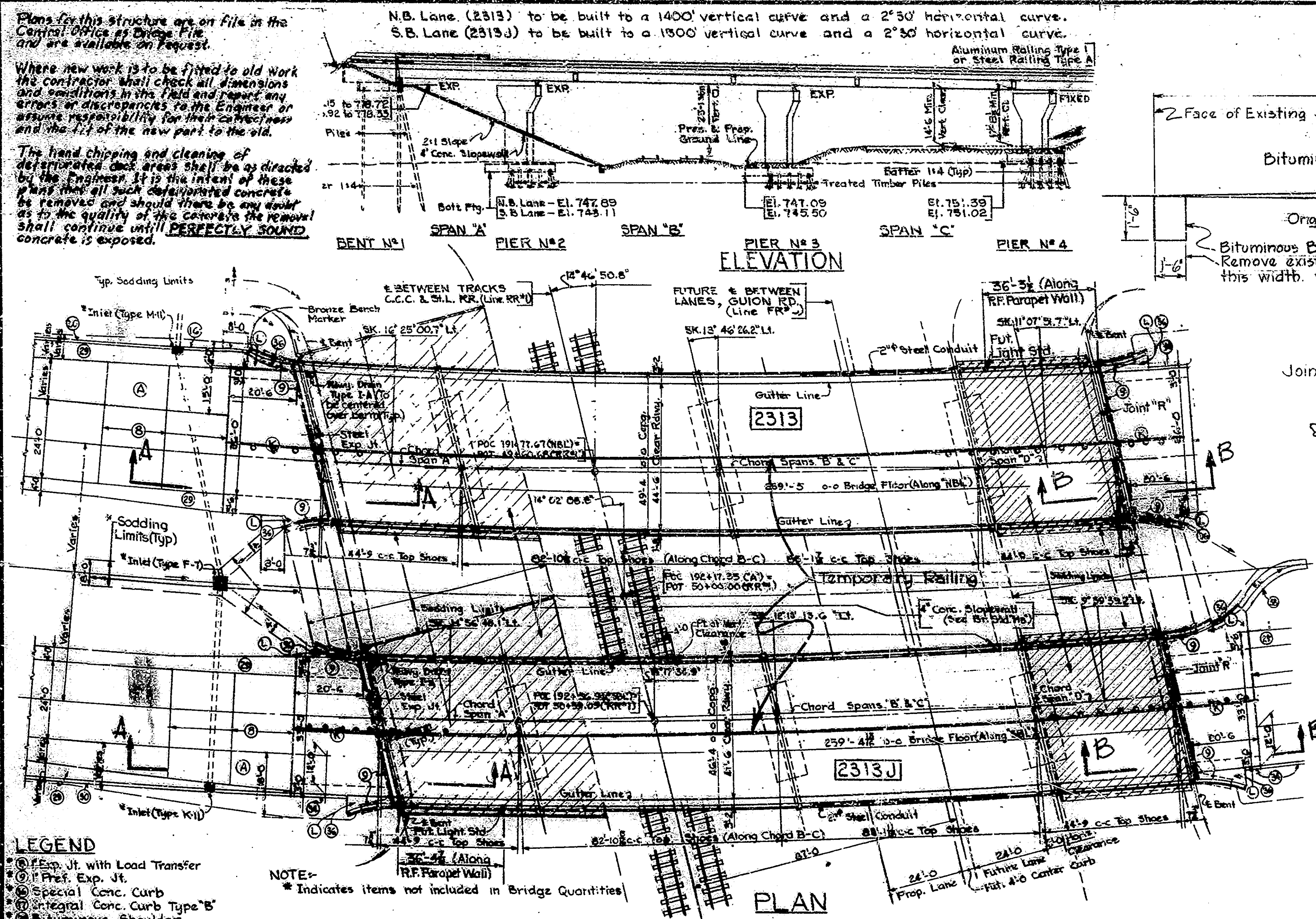


Plans for this structure are on file in the Central Office of Design, File # 192+17.35 and are available on request.

Where new work is to be fitted to old work the contractor shall check all dimensions and conditions in the field and report any errors or discrepancies to the Engineer or assume responsibility for their correctness and the fit of the new part to the old.

The hand chipping and cleaning of deteriorated deck areas shall be as directed by the Engineer. It is the intent of these plans that all such deteriorated concrete be removed and should there be any doubt as to the quality of the concrete the removal shall continue until PERFECTLY SOUND concrete is exposed.

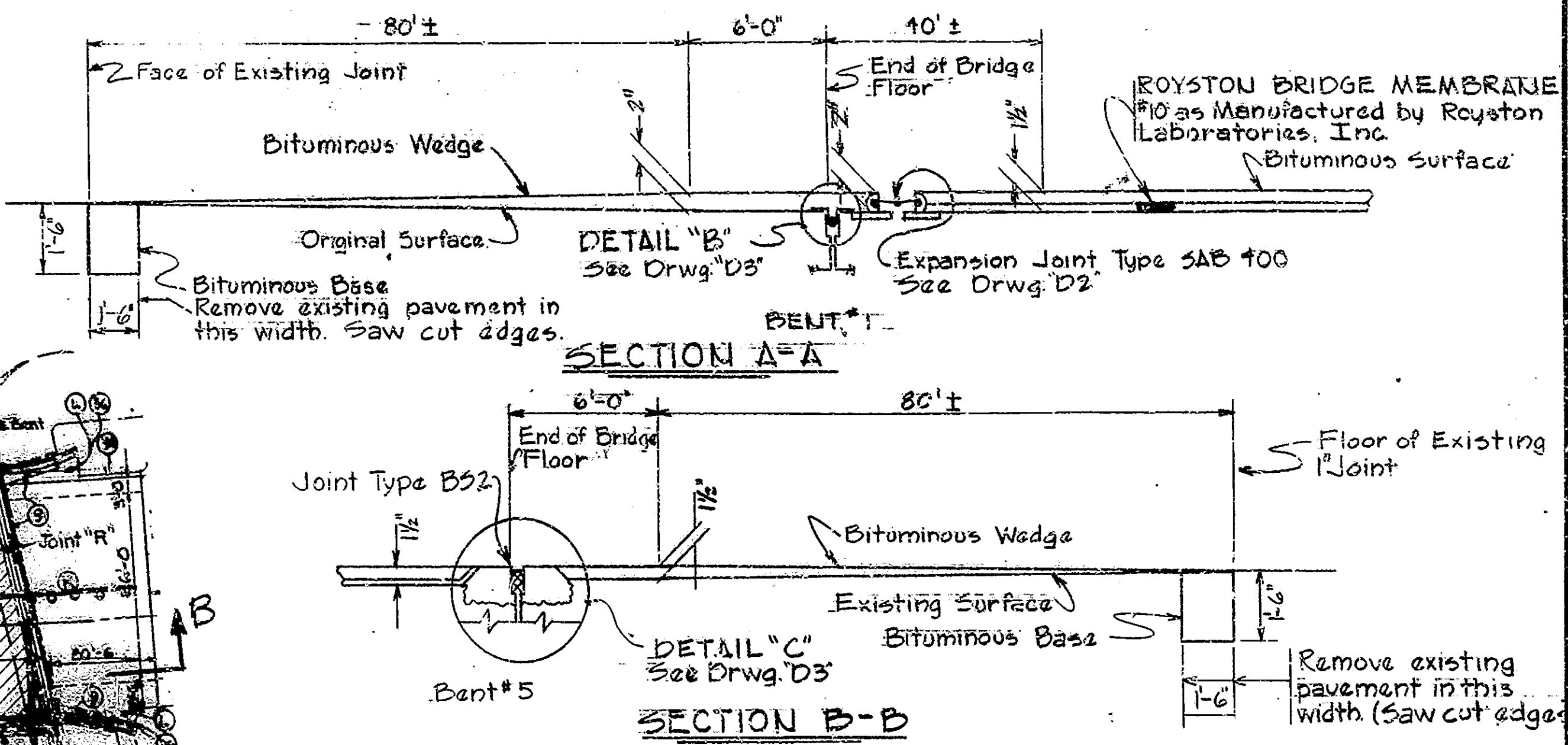
N.B. Lane (2313) to be built to a 1400' vertical curve and a 2°30' horizontal curve.
S.B. Lane (2313J) to be built to a 1300' vertical curve and a 2°30' horizontal curve.



- LEGEND**
- ① Exp. Jt. with Load Transfer
 - ② Pref. Exp. Jt.
 - ③ Special Conc. Curb
 - ④ Integral Conc. Curb Type 'B'
 - ⑤ Bituminous Shoulder
 - ⑥ Bituminous Curb
 - ⑦ Curb Turnout to Std. A-3 Inlet
 - ⑧ Special Integral Conc. Curb
 - ⑨ Integral Curb Walk
 - ⑩ Skd. Paved Gutter
 - ⑪ 10' Reinf. Conc. Pavement
 - ⑫ R.C. Bridge Approach
 - ⑬ Widened R.C. Bridge Approach

NOTE-
* Indicates items not included in Bridge Quantities

DRAWING NO. 192+17.35-2
DATE: 12-1-73
TRACED: C.K.D.



CONSTRUCTION PROCEDURE

1. Close ramp from westbound 38th street to northbound I-65
2. Install Traffic Tapers, temporary railings and other traffic devices and divert traffic to outer lanes of the structures.
3. Remove all deteriorated concrete from all spalled areas of the bridge floor. Remove all existing patching material. Remove concrete around all exposed reinforcing and clean all exposed reinforcing as specified in the special provisions. Edges of all concrete removal areas to be saw cut one inch minimum depth.
4. Place Special Class 'A' Concrete bonded with epoxy in all areas to be patched. Finish smooth to level of adjacent concrete.
5. Prepare the toothed joints as shown on the details and install the expansion joint hardware with temporary protection.
6. Build concrete expansion dams for the B5 joints at locations shown on the plans. Saw cut as shown to provide for joint installation.
7. Fill all existing voids and irregularities in the bridge floor with a neat cement paste or mortar of two parts sand to one part cement.
8. Place the waterproof protective membrane over the bridge floor within the limits shown.
9. Place the 1/2" bituminous surface and place bituminous tapers at each end of the structure to match the new surface.
10. Clean and seal face and top of curbs, inside face and top of parapet walls and top of expansion dams with a penetrating epoxy sealer.
11. Move the temporary traffic devices as required, divert traffic to the inner lanes and repeat steps 3 thru 9 to the outer lanes of the structure.

NOTE: The numbers do not necessarily indicate the sequence of operations. Pneumatic hammer 30lbs. maximum wt. to be used for removal.

DECK RECONSTRUCTION & OVERLAY

GENERAL PLAN
CONTINUOUS (COMPOSITE) STEEL BEAM BRIDGES
N.B. & S.B. STRUCTURES - 4 SPANS: 44'-9", 2 @ 83'-0", 44'-9"
N.B. STR. 44'-6" CL. RDWY., 10'-2" WALK, 10" CURB, APPROX. SK. 5"
S.B. STR. 41'-6" CL. RDWY., 10'-2" WALK, 10" CURB, APPROX. SK. 5"
ON INTERSTATE 65 OVER C.C.C. & ST.L.P.R. & FR. RD. NO. 5

INDIANA STATE HIGHWAY COMMISSION
MARION COUNTY

SCALE: 1" = 20'-0" UNLESS NOTED MARCH 16, 1973

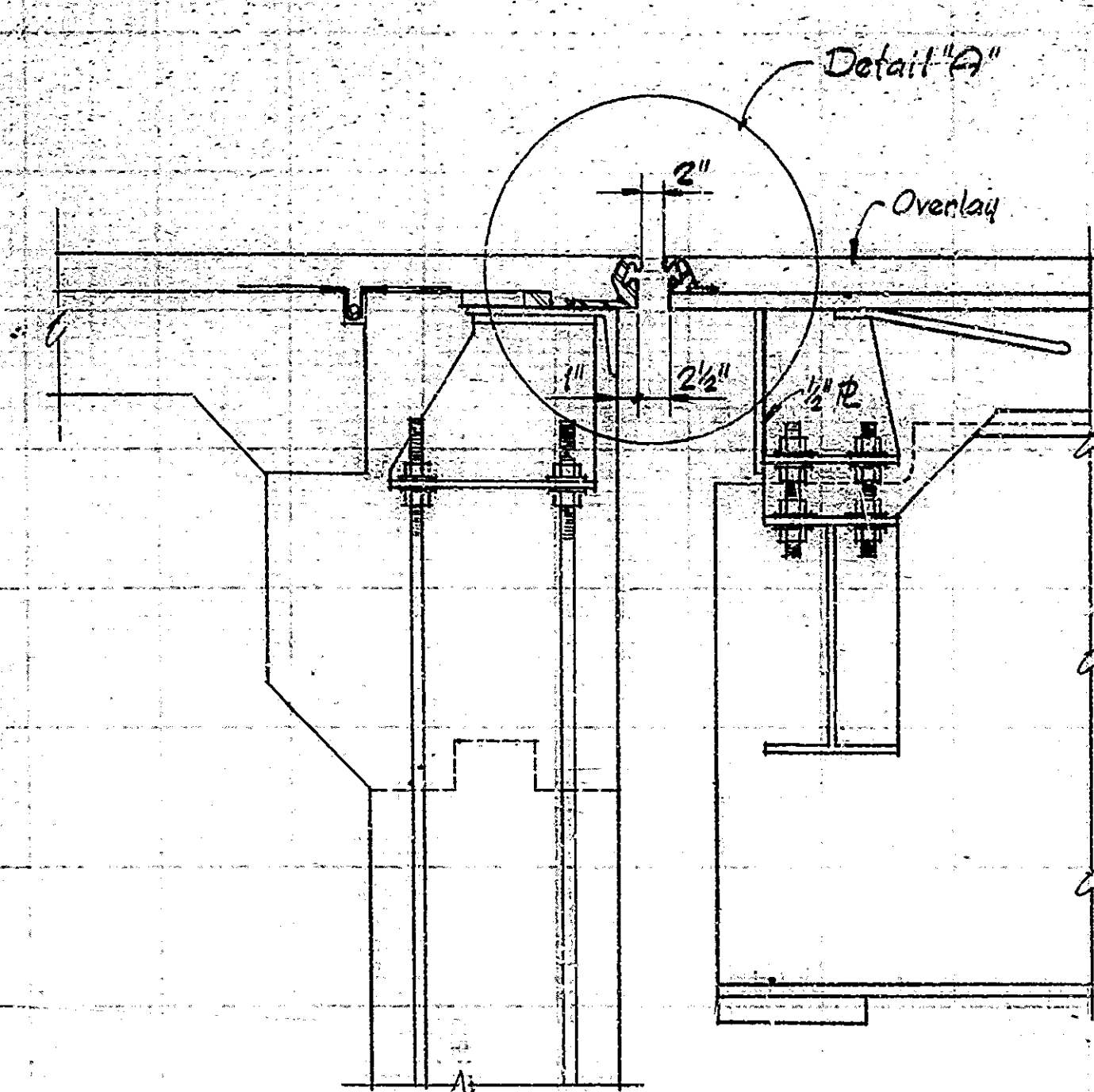
SUBMITTED FOR APPROVAL: *E. J. Walters*
Assistant Engineer, Bridge Design

DATE: 01 of 3 SHEET 3 OF 10
PROJECT: STA. 192+17.35 (A')

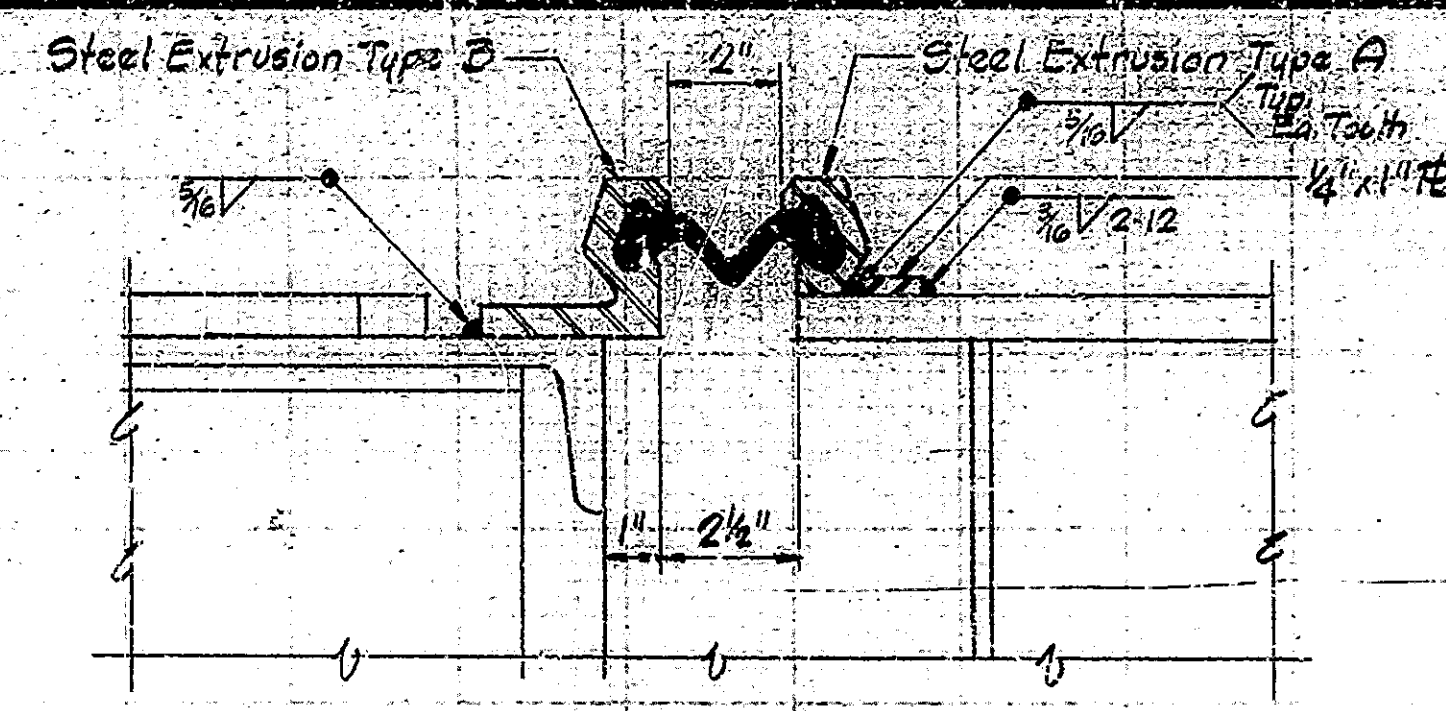
BRIDGE CONTRACT NO. B-9340
DRAWING NO. 192+17.35-2 (N.B. Lane)
SHEET FILE NO. 192+17.35-2 (S.B. Lane)

| STD. | PURPOSE |
|---------|--------------------|
| GR2 | Guard Rail Details |
| DET 501 | Detail of Approach |
| DET 502 | Detail of Approach |
| DET 503 | Detail of Approach |
| DET 504 | Detail of Approach |
| DET 505 | Detail of Approach |

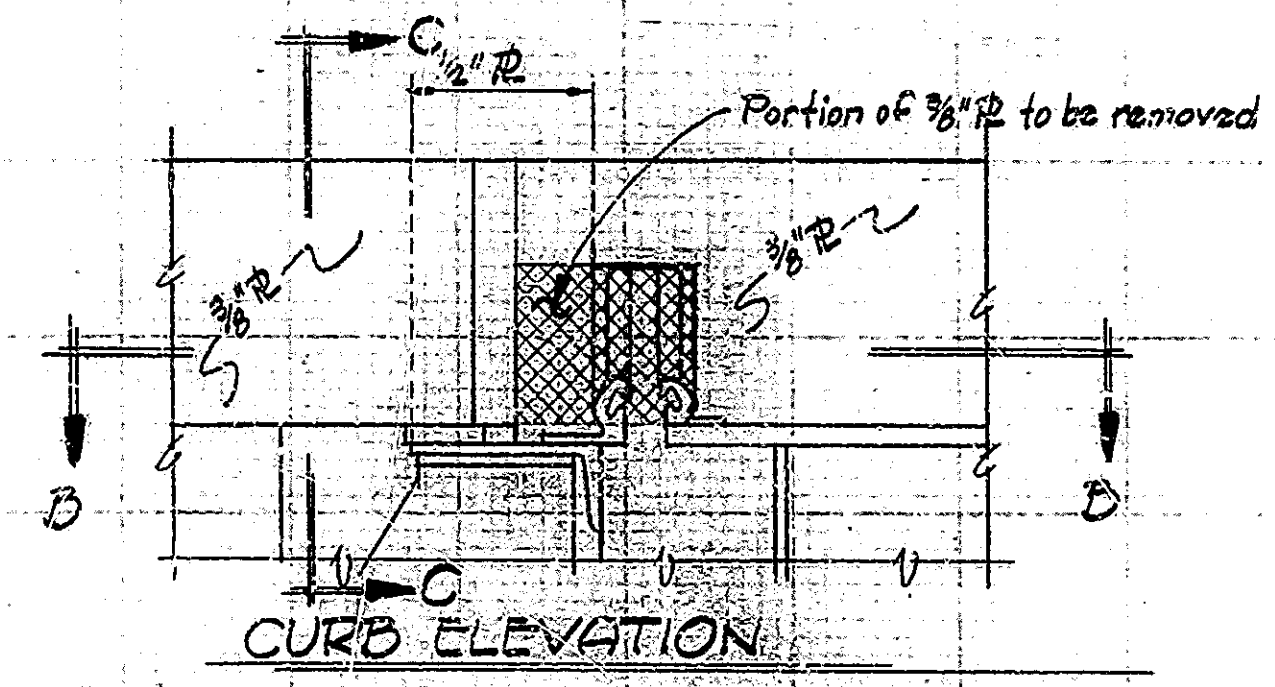
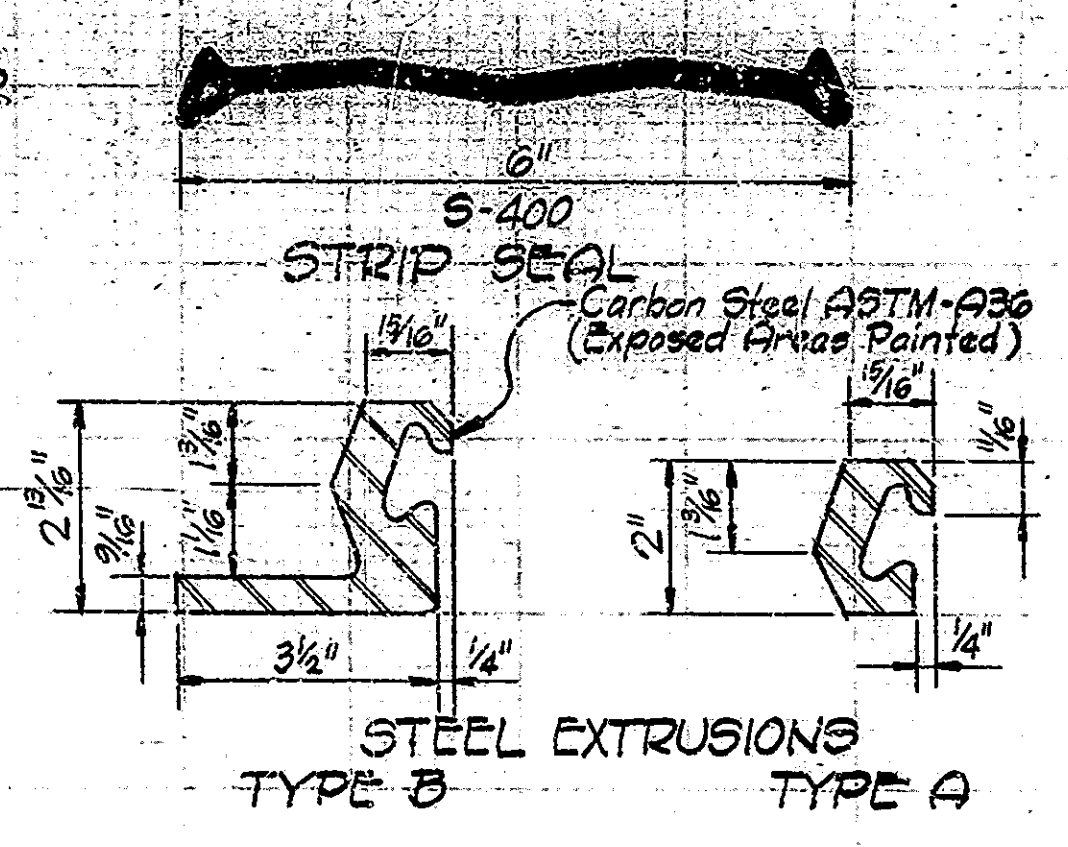




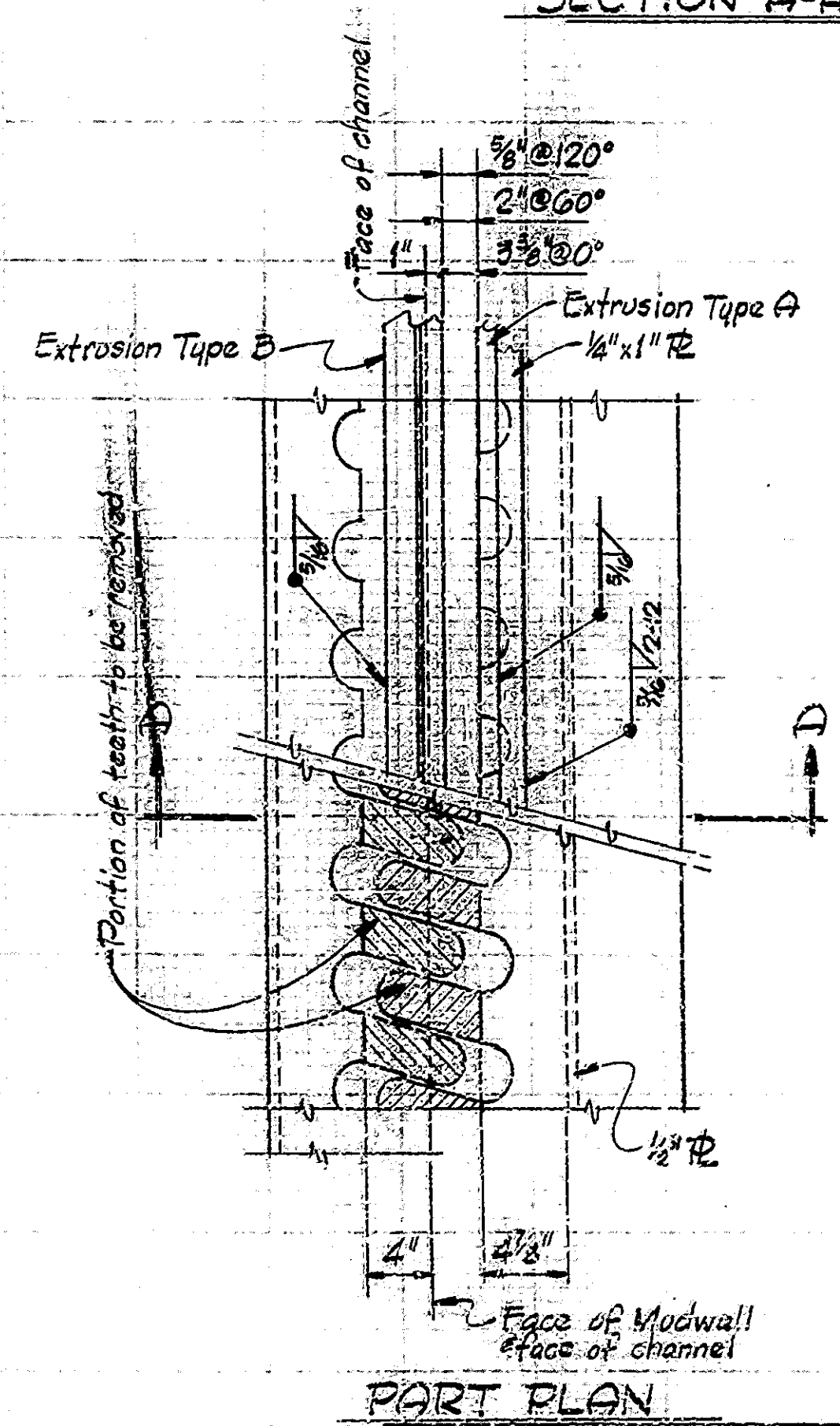
SECTION A-A



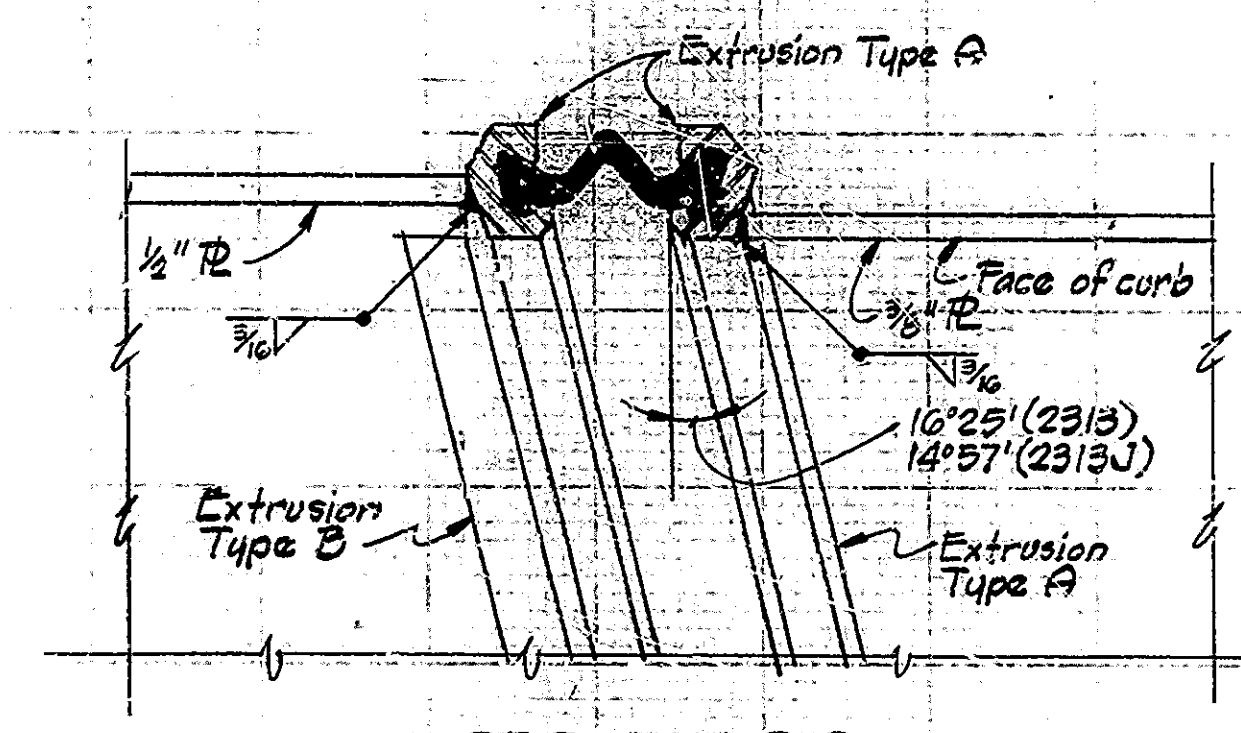
DETAIL A



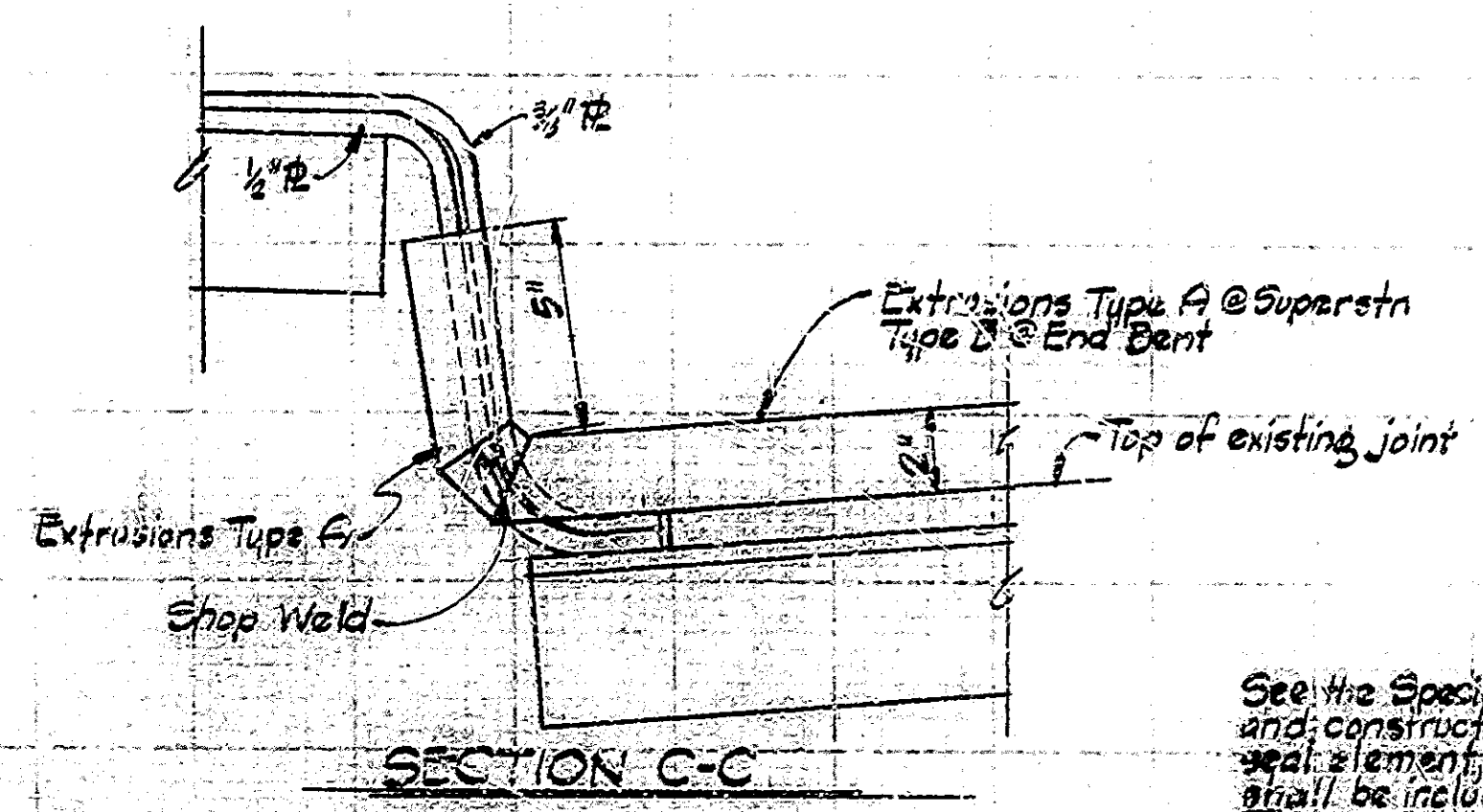
CURB ELEVATION



PART PLAN



SECTION B-B



SECTION C-C

NOTES

See the Special Provisions for physical properties of materials and construction methods. The cost of steel extrusions, neoprene seal element, active anchor system, and installation of joint shall be included in the cost of expansion joint. The profile of joint is to conform to the roadway cross section. The Contractor shall submit 4 copies of shop drawings.

EXPANSION JOINT TYPE
SAB-400 DETAILS

INDIANA STATE HIGHWAY COMMISSION

SCALE: NONE

DATE: MARCH 16, 1973

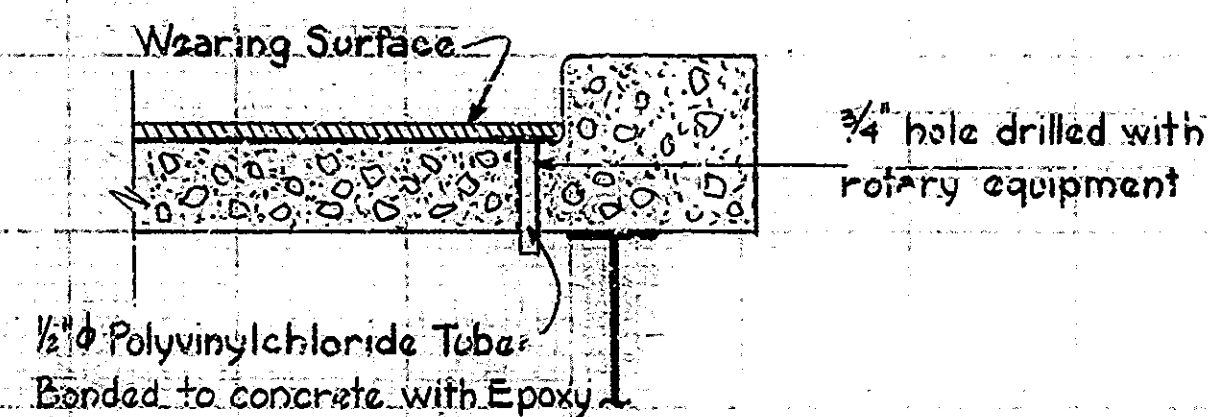
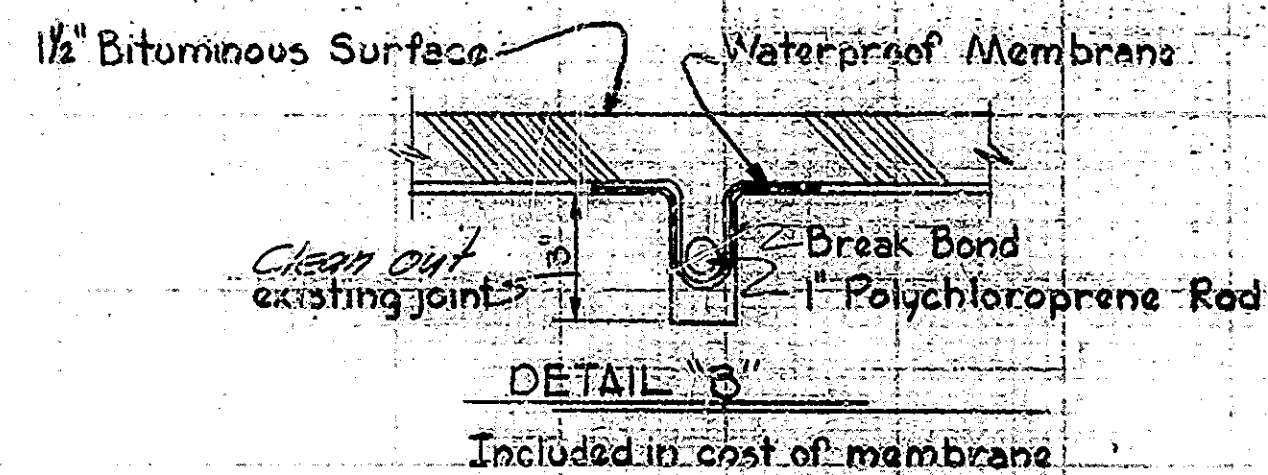
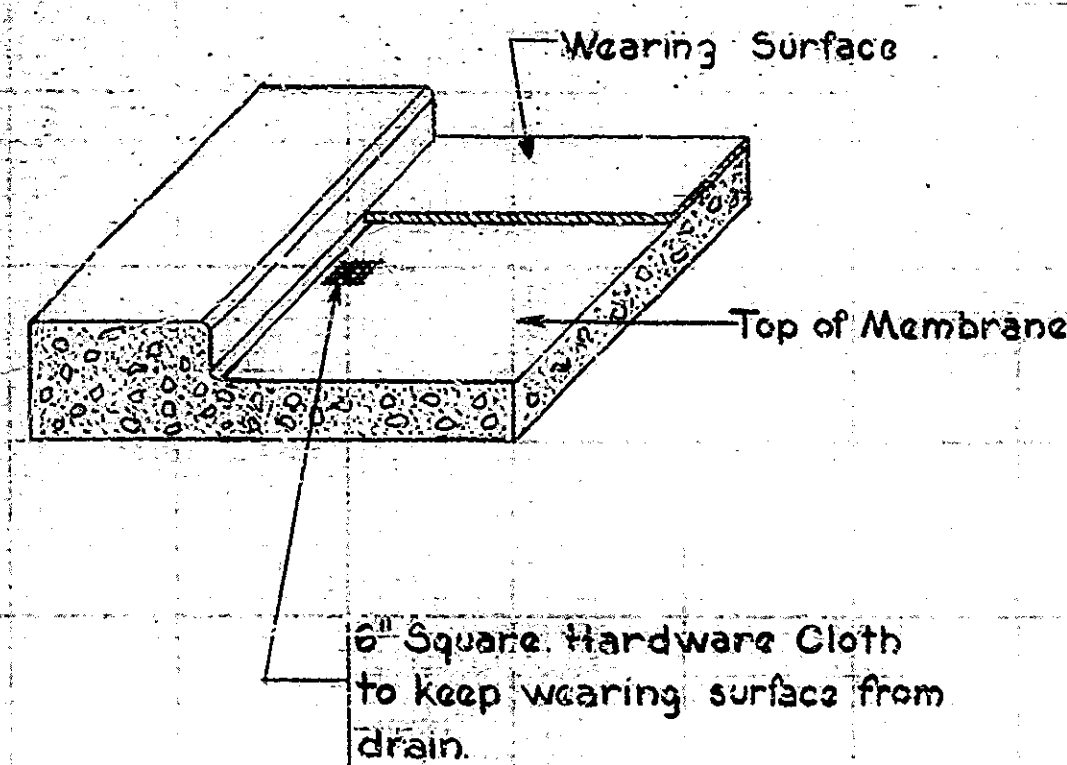
DRAWING: D2 OF 3 SHEET: 4 OF 10

PROJECT: CONTRACT NO. B-9340

BRIDGE FILE: I-65-13-2313 A1 JA

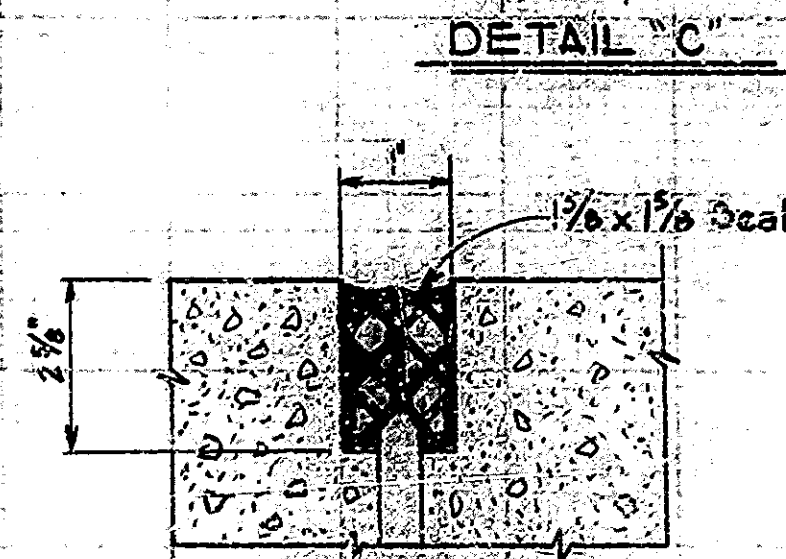
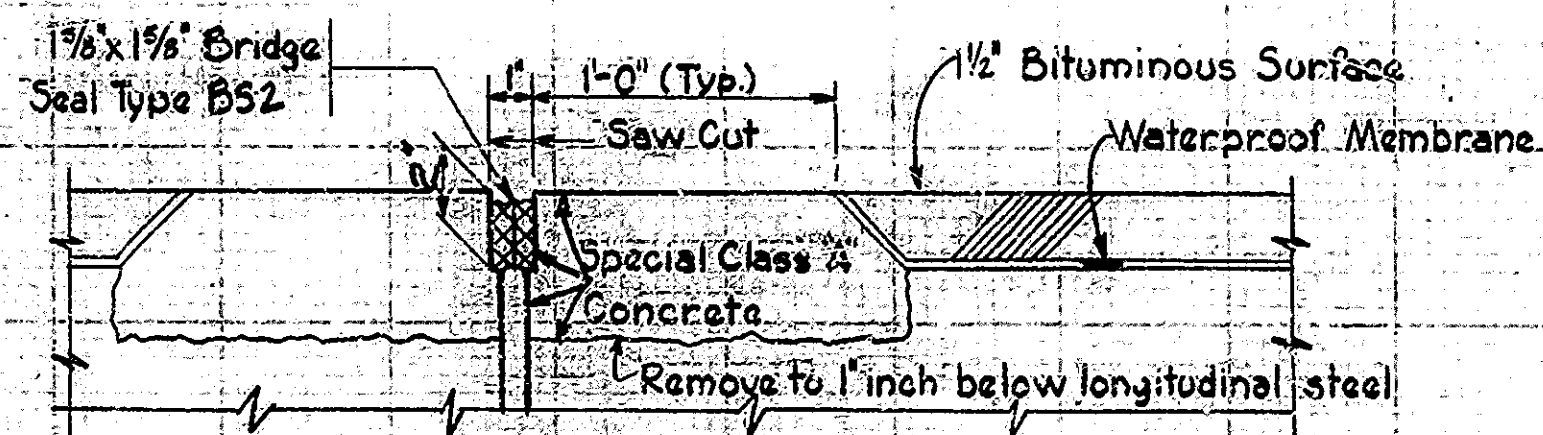


DESIGNED: CND
DRAWN: 205/7/73 CND
TRACED: CND



DECK DRAIN DETAILS

(Place at 20' spacing along lower gutter lines and adjacent to expansion dams.)



BRIDGE SEAL BS2

Minimum Joint Width $5/8"$
 Maximum Joint Width $1 1/2"$
 Minimum Joint Width @ installation $7/8"$
 Minimum Joint depth @ installation $2"$

NOTE: The BS joint seal shall extend up the face and across top of curbs. Clean out or rebuild existing curb joints to accommodate joint seal. Such work to be included in cost of joint type BS.

| SUMMARY | | | |
|---------|------------------------------------|---------|----------|
| | DESCRIPTION | UNIT | QUANTITY |
| (a) | Special Class "A" Concrete | Sq. Ft. | 2560 |
| (d) | Sheet Applied Membrane | L.S. | 1 |
| | Bituminous Mixtures for Approaches | Tons | 277 |
| | Pavement Removal | Sys. | 24 |
| | Surface Seal | Sq. Ft. | 3160 |
| | Deck Drains | Each | 26 |
| | Expansion Joint Type SAB-400 | L.F. | 91 |
| (e) | Joint Type BS2 | L.F. | 97 |
| | Temporary Pavement Marking Tape | L.F. | 3000 |
| | Construction Signs Type "A" | Each | 28 |
| | Construction Signs Type "B" | Each | 12 |
| | Maintaining Traffic | L.S. | 1 |
| | Standard Barricade Type III | Each | 2 |
| | Flashing Arrow Board | Each | 2 |

- (a) Includes concrete removal, saw cuts, cleaning reinforcing and Epoxy Bonding Compound.
- (d) Estimated Quantity = 22,360^{sq}
- (e) Includes preparation of walks and curbs.

DETAILS

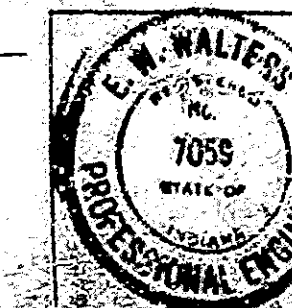
INDIANA STATE HIGHWAY COMMISSION

SCALE: NONE

DATE: MARCH 16, 1973

E. W. Walters
 LICENSED PROFESSIONAL ENGINEER

DRAWING: 23 OF 3 SHEET: 5 OF 10
 PROJECT: -
 CONTRACT NO. 8-9340
 BRIDGE FILE: I-65-110-2513 A+JA



DESIGNED: CWD
 DRAWN: DAW
 CHECKED: CWD

STR

I-65-110-2513 A