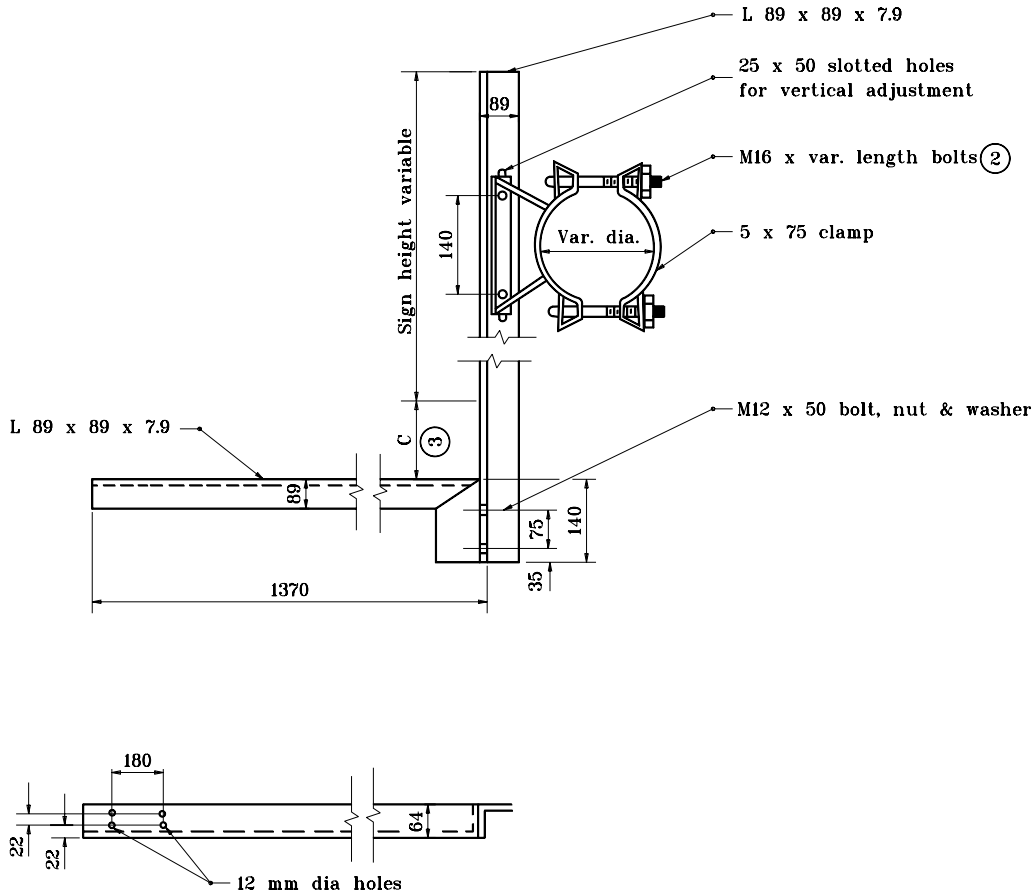


## GENERAL NOTES

1. Alternate right and left hand sign brackets required. (See typical plan)
- ② See Standard Drawing 803-SNIL-07 for Conduit-Lighting Detail.
- ③ Dimension governed by type of lighting fixture used. The contractor shall advise the fabricator of this dimension.



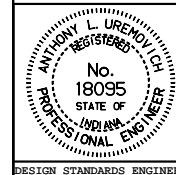
All dimensions are in mm unless otherwise specified.

INDIANA DEPARTMENT OF TRANSPORTATION

**SIGN BRACKET WITH  
EXTENSION LIGHTING SUPPORT**

JANUARY 2000

STANDARD DRAWING NO. 803-SNIL-06



/s/ Anthony L. Uremovich 1-03-00  
DESIGN STANDARDS ENGINEER DATE

/s/ Firooz Zandi      1-03-00  
CHIEF HIGHWAY ENGINEER      DATE

### SIGN BRACKET WITH EXTENSION LIGHTING SUPPORT (FOR SINGLE ARM OR BEAM)