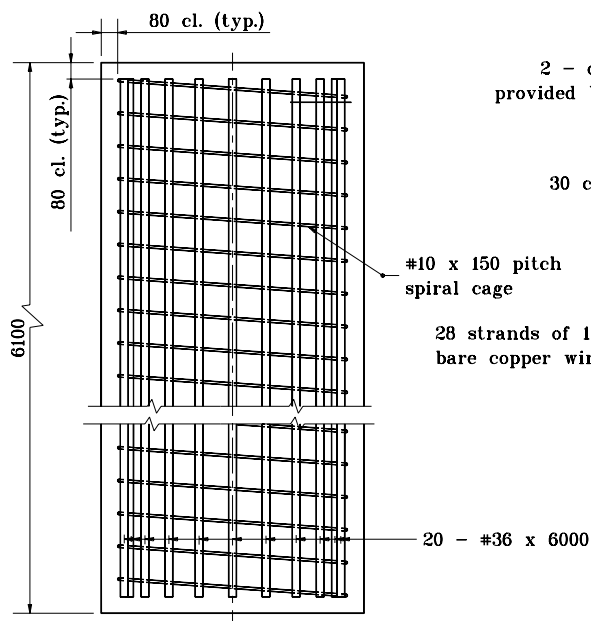
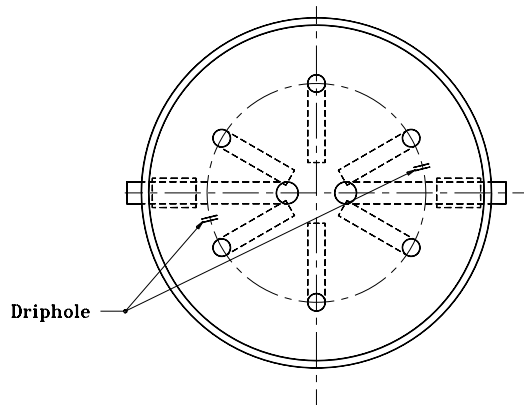


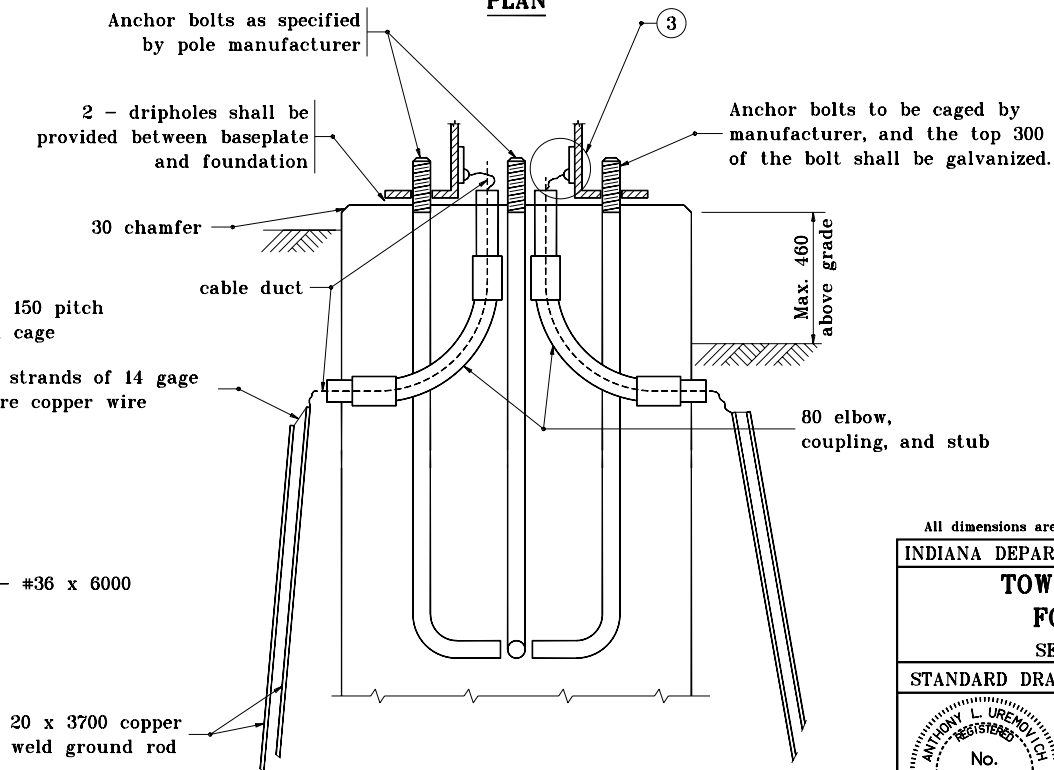
**PLAN
REINFORCING DETAIL**



**ELEVATION
REINFORCING DETAIL**



PLAN



ELEVATION

GENERAL NOTES

- ① Foundation to be formed below grade.
- ② Maximum soil pressure 140 kPa.
- ③ See Standard Drawing 807-LTLR-02 for detail.

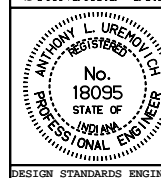
All dimensions are in mm unless otherwise specified.

INDIANA DEPARTMENT OF TRANSPORTATION

**TOWER LIGHTING
FOUNDATION**

SEPTEMBER 2000

STANDARD DRAWING NO. 807-LTFD-08



/s/ Anthony L. Uremovich 9-01-00
DESIGN STANDARDS ENGINEER DATE

/s/ Firooz Zandi 9-01-00
CHIEF HIGHWAY ENGINEER DATE

DESIGN STANDARDS ENGINEER