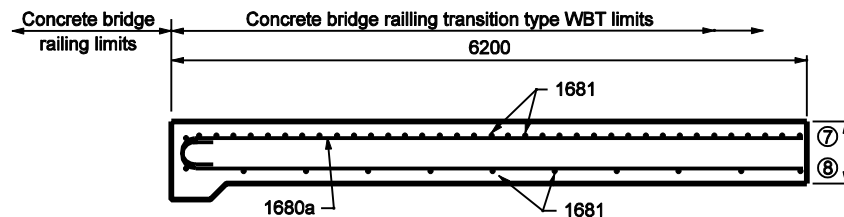
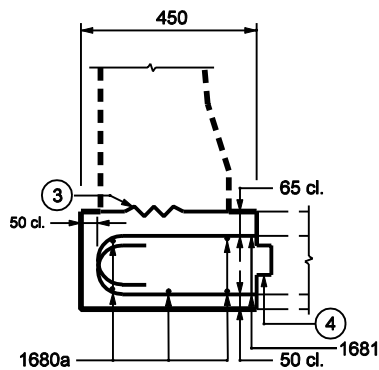


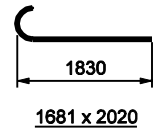
PLAN



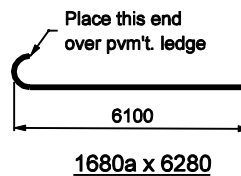
SECTION F-F



SECTION E-E



1681 x 2020



1680a x 6280

**NOTES:**

1. See Standard Drawing 706-TASE-05 for General Notes.

BILL OF MATERIALS			
These quantities are for one approach slab extension.			
EPOXY COATED REINFORCING STEEL			
Size & type	No. of Bars	Length	Weight (lb)
1680a	5	6280	
1681	52	2020	
#16	2	1300	
Total #16 Bars			216
Total Epoxy Coated Steel			216
MISCELLANEOUS			
250 R.C. Pymt.			3.1m. <sup>2</sup>

All Dimensions are in mm unless otherwise specified

INDIANA DEPARTMENT OF TRANSPORTATION

**BRIDGE RAILING TRANSITION  
WBT SLAB EXTENSION**

SEPTEMBER 2002

STANDARD DRAWING NO. 706-TASE-04

	/s/ Richard L. VanCleave	9-03-02
	DESIGN STANDARDS ENGINEER	DATE
	/s/ Richard K. Smutzer	9-03-02
	CHIEF HIGHWAY ENGINEER	DATE

DESIGN STANDARDS ENGINEER