

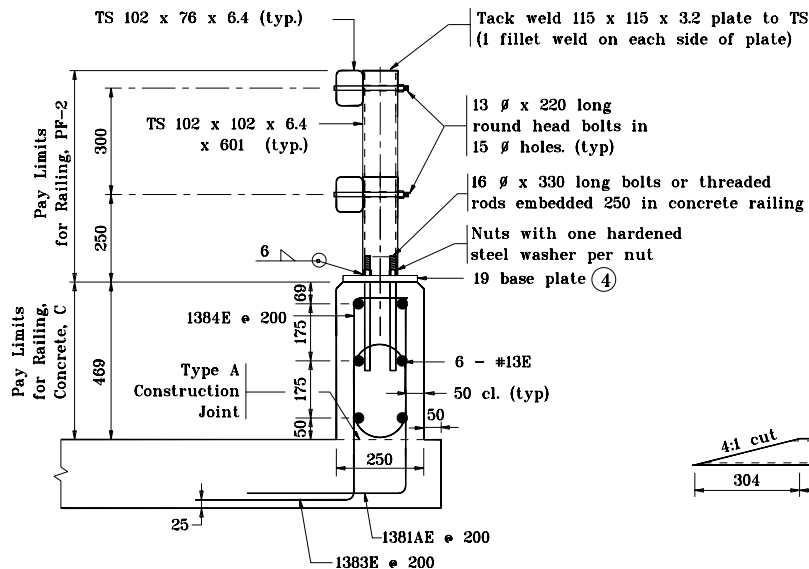
8 - 13  $\phi$  x 320 long round head bolts in 15  $\phi$  holes. (4 ea. rail)  
Holes are to be slotted as required for expansion.

\* NOTE: Field measure distance to holes on concrete transition.

### ELEVATION

### NOTES :

1. All chamfered edges shall be 25.
2. Intermediate railing splices shall be placed every 6 m with center of connection at span quarter points.
3. See Standard Drawing 706-BRPP-05 for Railing Tube Details and Inner Sleeve Details.
- ④ See Standard Drawing 706-BRPP-06 for Base Plate Detail and reinforcing steel bar bends.
5. See Standard Drawing 706-TTBP-03 and 706-TTBP-04 for Concrete Bridge Railing Transition, TPF-2
6. See Standard Drawing 703-BRST-01 for Standard 180° bar bending detail.
7. All reinforcing bars designated "E" shall be epoxy coated.



### TYPICAL SECTION



### DETAIL A (Plan view of both rails)

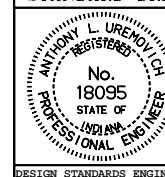
All dimensions are in mm unless otherwise specified.

INDIANA DEPARTMENT OF TRANSPORTATION

### RAILING, PF-2

SEPTEMBER 2001

STANDARD DRAWING NO. 706-BRPP-02



/s/ Anthony L. Uremovich 9-04-01  
DESIGN STANDARDS ENGINEER DATE

/s/ Firooz Zandi 9-04-01  
CHIEF HIGHWAY ENGINEER DATE

DESIGN STANDARDS ENGINEER