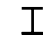
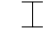



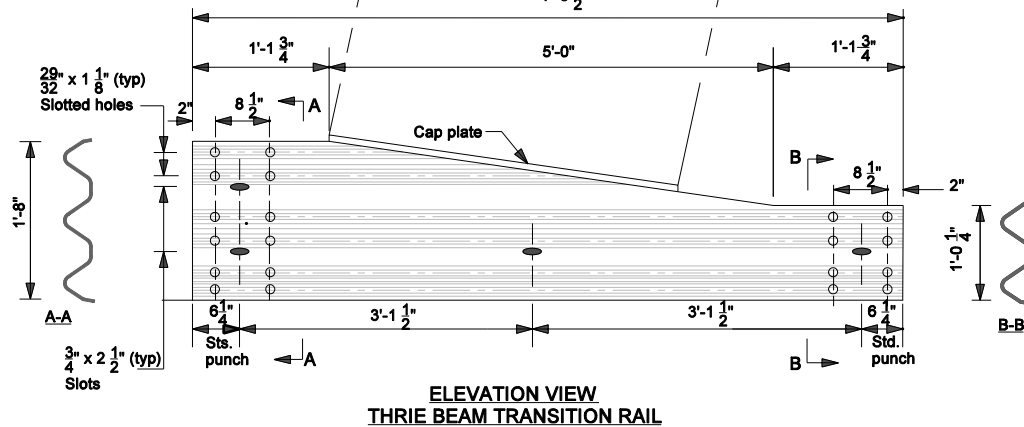
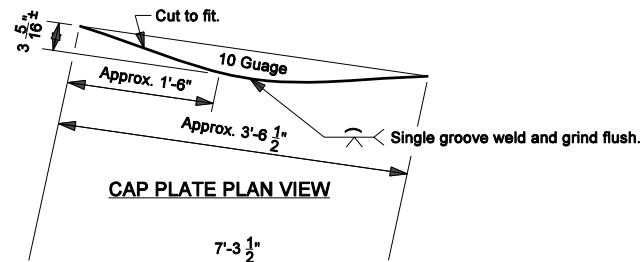
**THRIE BEAM TO W-BEAM GUARDRAIL TRANSITION**

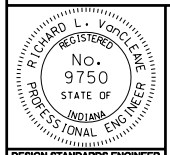
**LEGEND:**

-  - W 6 x 9 Post
-  - W 14 x 22 Blockout
-  - Approved W-Beam Blockout.

**Notes:**

1. For Thrie Beam Guardrail details, see Standard Drawing E 601-MTGR-01.
2. For W-Beam rail details, see Standard Drawing E 601-WBGC-01
3. For W-Beam Guardrail assembly details, see Standard Drawings E 601-WBGA-01 thru -03.
4. Slope on Thrie Beam Transition shall be reversed when thrie beam to W-beam guardrail relative orientation is opposite to that shown hereon.



INDIANA DEPARTMENT OF TRANSPORTATION		
<b>W-BEAM GUARDRAIL TO THRIE BEAM GUARDRAIL TRANSITION, WGT</b>		
MARCH 2005		
STANDARD DRAWING NO. E 601-TWGT-01		
	/s/ Richard L. VanCleave	3-01-05
	DESIGN STANDARDS ENGINEER	DATE
	/s/ Richard K. Smutzer	3-01-05
DESIGN STANDARDS ENGINEER	CHIEF HIGHWAY ENGINEER	DATE