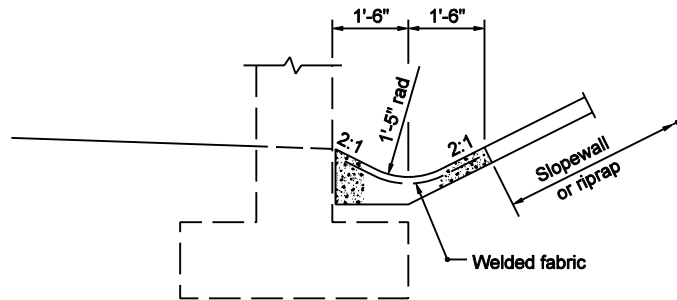
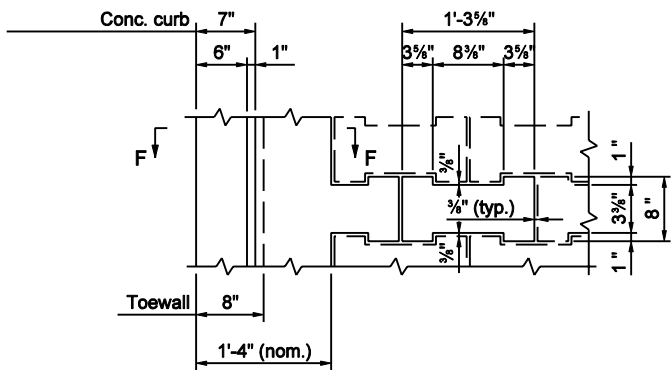


SECTION THROUGH PRECAST RIPRAP



SECTION THROUGH PAVED DITCH AT TOE OF SLOPE

(See layout on plans for location of paved ditch)



PLAN - PRECAST CONCRETE RIPRAP

NOTES

1. See Standard Drawing E 616-SWRR-01 for Section F-F.
2. If riprap is specified, 1'-0" hand-laid riprap or precast concrete riprap type A may be used.
3. Precast conc. riprap
 Type A: H = 7 7/8" (8" nom.)
 Type B: H = 3 3/8" (4" nom.)

INDIANA DEPARTMENT OF TRANSPORTATION	
RIPRAP SLOPEWALL DETAILS	
SEPTEMBER 2003	
STANDARD DRAWING NO. E 616-SWRR-02	
	/s/ Richard L. VanCleave 9-02-03 DESIGN STANDARDS ENGINEER DATE
	/s/ Richard K. Smutzer 9-02-03 CHIEF HIGHWAY ENGINEER DATE
DESIGN STANDARDS ENGINEER	