

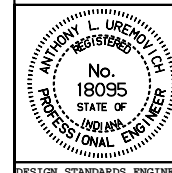
GEOTEXTILE DETAIL

INDIANA DEPARTMENT OF TRANSPORTATION

**TYPICAL SECTION
R.C. ABUTMENT OR WING**

SEPTEMBER 1997

STANDARD DRAWING NO. E 702-BCAW-01



DETAILS PLACED IN THIS FORMAT 11-15-99

/s/ Anthony L. Uremovich 11-15-99
DESIGN STANDARDS ENGINEER DATE

/s/ Firooz Zandi 11-15-99
CHIEF HIGHWAY ENGINEER DATE

DESIGN STANDARDS ENGINEER

ORIGINALLY APPROVED

9-02-97