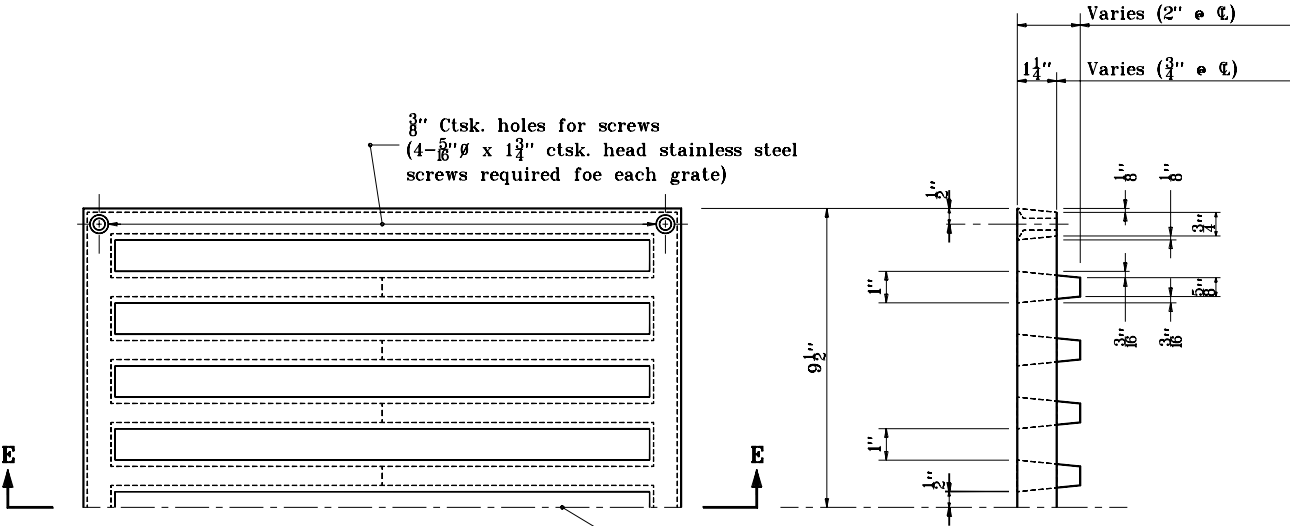


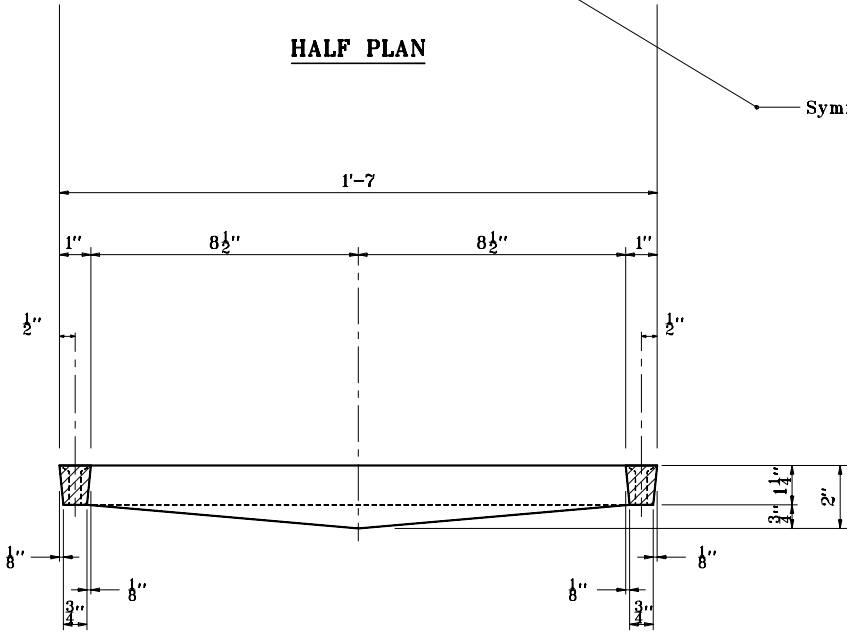
**GENERAL NOTES**

1. Fit grate to box in shop and ship in place.
2. For direction of bars in grate A, see floor details.
3. This grate is used with roadway drain Type SQ and weighs approximately 72 lb.



**HALF PLAN**

Symmetrical About C

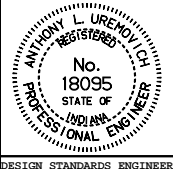


**SECTION E-E**

INDIANA DEPARTMENT OF TRANSPORTATION

**CASTING DETAILS**  
**GRATE A**  
SEPTEMBER 1994

STANDARD DRAWING NO. **E 704-BDCG-01**



DETAILS PLACED IN THIS FORMAT 11-15-99

/s/ Anthony L. Uremovich 11-15-99  
DESIGN STANDARDS ENGINEER DATE

/s/ Firooz Zandi 11-15-99  
CHIEF HIGHWAY ENGINEER DATE

DESIGN STANDARDS ENGINEER ORIGINALLY APPROVED 9-30-94