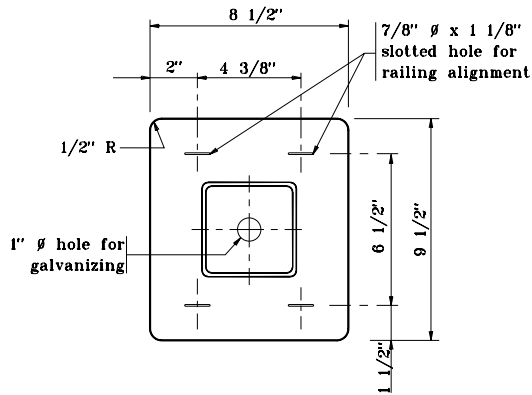
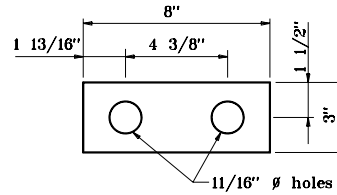


NOTES:

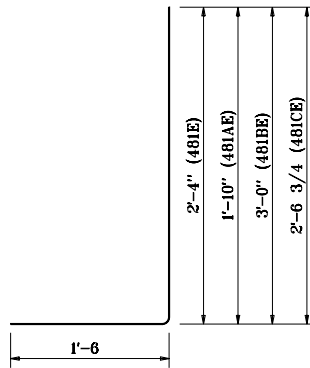
1. See Standard Drawing E 703-BRST-01 for standard 180° bar bending details.
2. All reinforcing bars designated "E" shall be epoxy coated.



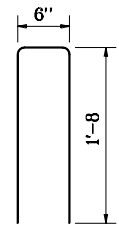
BASE PLATE DETAIL



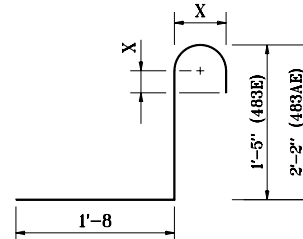
BEARING PLATE DETAIL



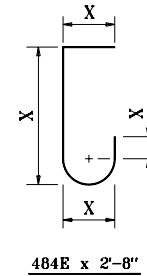
- 481E x 3'-10"
- 481AE x 3'-4"
- 481BE x 4'-6"
- 481CE x 4'-0 3/4"



482E x 3'-10"



- 483E x 3'-10"
- 483AE x 4'-8"



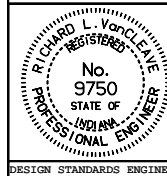
484E x 2'-8"

INDIANA DEPARTMENT OF TRANSPORTATION

**RAILING, PF & PS
DETAILS**

MARCH 2002

STANDARD DRAWING NO. **E 706-BRPP-06**



/s/ Richard L. VanCleave 3-01-02
DESIGN STANDARDS ENGINEER DATE

/s/ Richard K. Smutzer 3-01-02
CHIEF HIGHWAY ENGINEER DATE

DESIGN STANDARDS ENGINEER