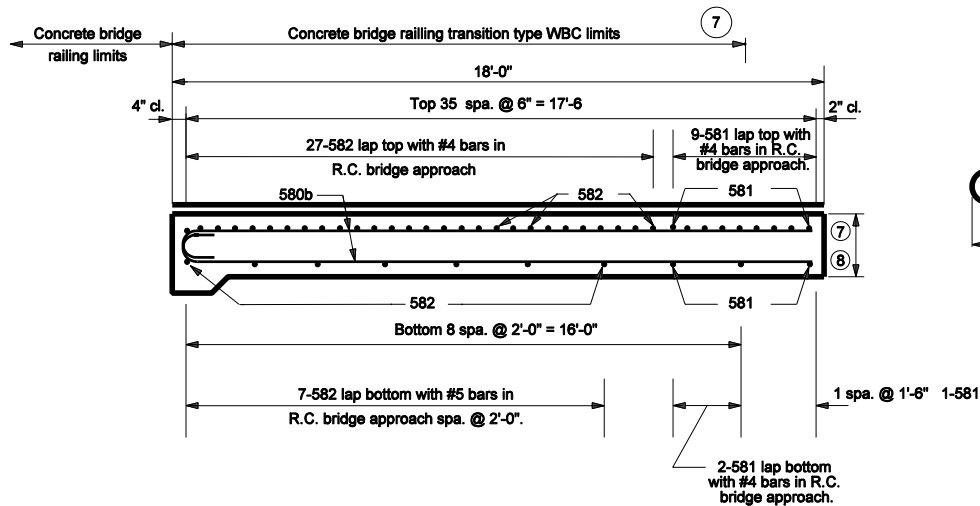


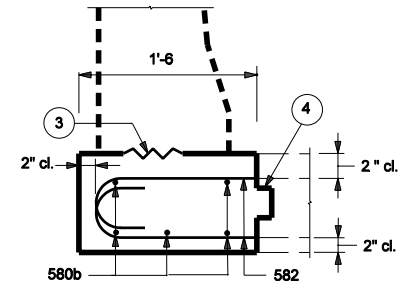
PLAN



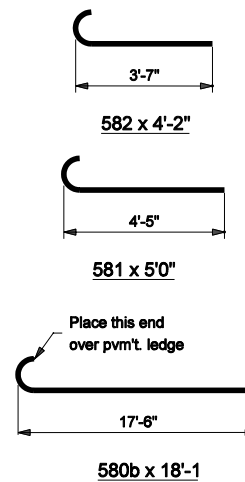
SECTION F-F

NOTES :

1. See Standard Drawing E 706-TWBC-01 through -03 for concrete bridge railing transition WBC details.
2. See Standard Drawing E 706-TASE-05 for General Notes.



SECTION E-E



BILL OF MATERIALS			
These quantities are for one approach slab extension.			
EPOXY COATED REINFORCING STEEL			
Size & type	No. of Bars	Length (ft-in)	Weight (lb)
580b	5	18'-1"	
581	12	5'-0"	
582	34	4'-2"	
#5	2	3'-8"	
Total #5 Bars			312
Total Epoxy Coated Steel			312
MISCELLANEOUS			
R.C. Br. Appr., 10'			3.37 yd <sup>2</sup>

INDIANA DEPARTMENT OF TRANSPORTATION

**BRIDGE RAILING TRANSITION WBC SLAB EXTENSION**

SEPTEMBER 2004

STANDARD DRAWING NO. E 706-TASE-03

	<i>/s/ Richard L. VanCleave</i>	9-01-04
	DESIGN STANDARDS ENGINEER	DATE
	<i>/s/ Richard K. Smutzer</i>	9-01-04
	CHIEF HIGHWAY ENGINEER	DATE

DESIGN STANDARDS ENGINEER