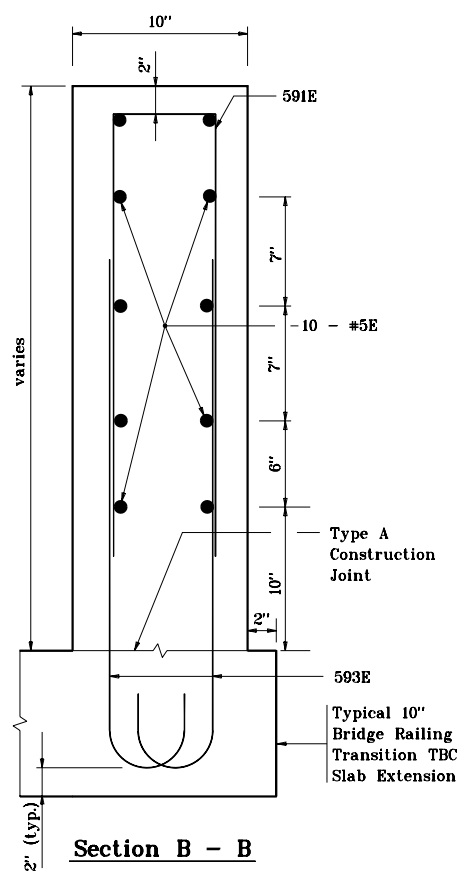
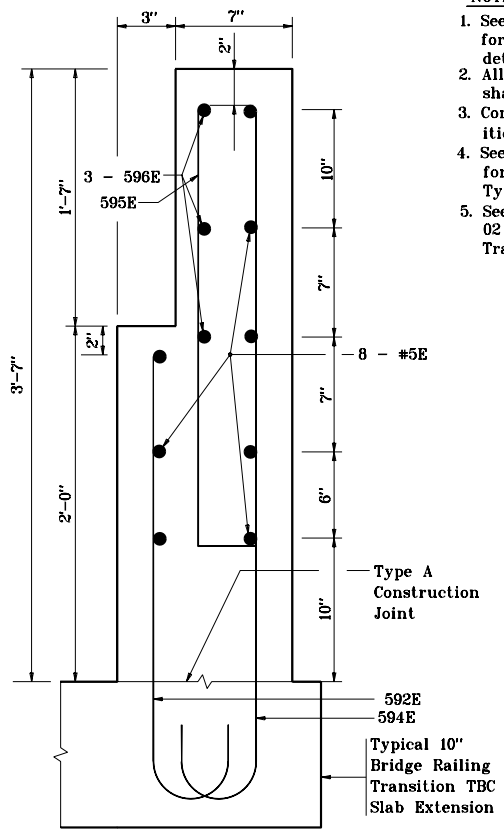


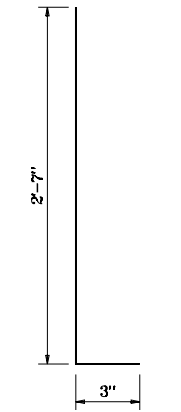
Section A - A



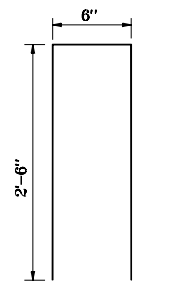
Section B - B



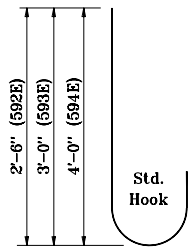
Section C - C



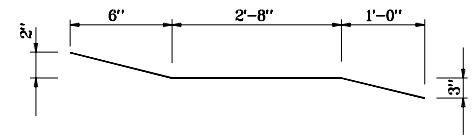
595E x 2'-10"



591E x 5'-6"



592E x 3'-1"
593E x 3'-7"
594E x 4'-7"



596E x 4'-3"

- NOTES:**
1. See Standard Drawing E 703-BRST-01 for standard 180° bar bending detail.
 2. All reinforcing bars designated "E" shall be epoxy coated.
 3. Concrete in bridge railing transition to be class C.
 4. See Standard Drawing E 706-CBRT-02 for attachment of guardrail Type TGB.
 5. See Standard Drawing E 706-TASE-01, 02 & 05 for Bridge Railing Transition TBC Slab Extension.

INDIANA DEPARTMENT OF TRANSPORTATION	
CONCRETE BRIDGE RAILING TRANSITION, TPF-1	
MAY 2000	
STANDARD DRAWING NO. E 706-TTBP-02	
	/s/ Anthony L. Uremovich 5-01-00 DESIGN STANDARDS ENGINEER DATE
	/s/ Firooz Zandi 5-01-00 CHIEF HIGHWAY ENGINEER DATE