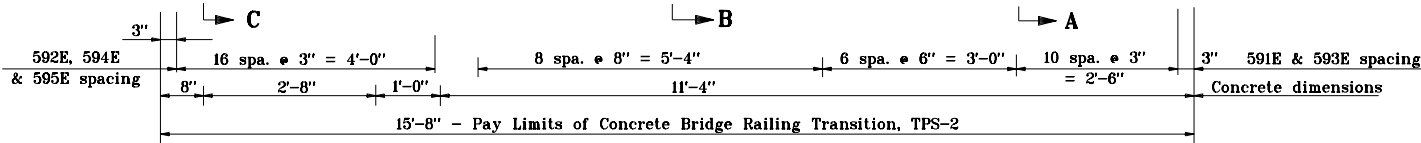
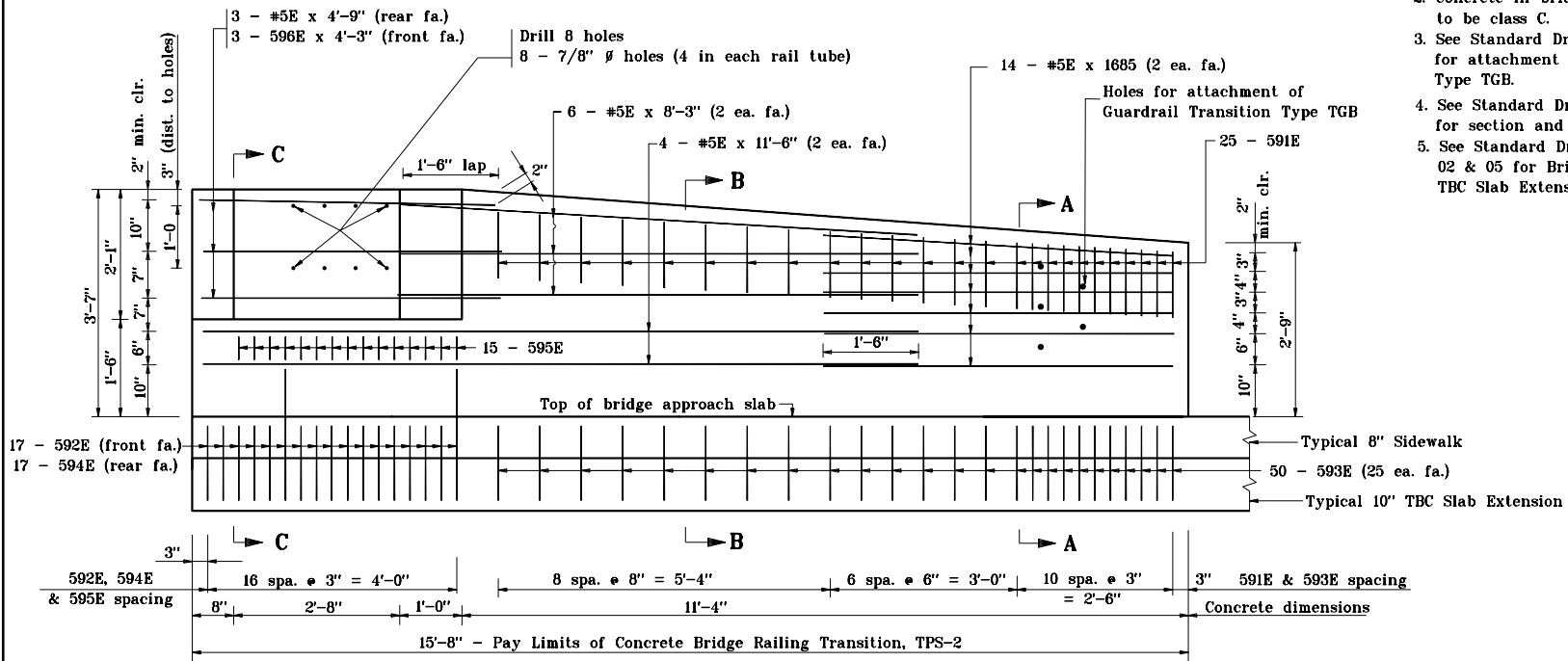
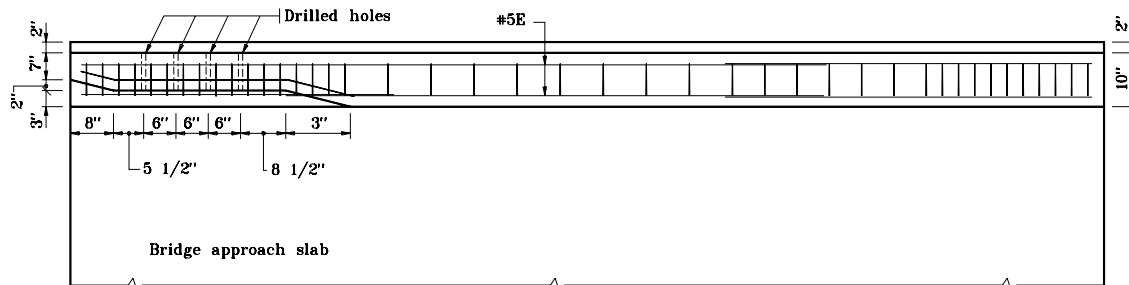


**NOTES:**

1. All reinforcing bars designated "E" shall be epoxy coated.
2. Concrete in bridge railing transition to be class C.
3. See Standard Drawing E 706-CBRT-02 for attachment of Guardrail Transition Type TGB.
4. See Standard Drawing E 706-TTBP-08 for section and bar details.
5. See Standard Drawing E 706-TASE-01, 02 & 05 for Bridge Railing Transition TBC Slab Extension.



**ELEVATION**



**PLAN**

INDIANA DEPARTMENT OF TRANSPORTATION	
<b>CONCRETE BRIDGE RAILING TRANSITION, TPS-2</b>	
MAY 2000	
STANDARD DRAWING NO. <b>E 706-TTBP-07</b>	
	/s/ Anthony L. Uremovich 5-01-00 <small>DESIGN STANDARDS ENGINEER DATE</small>
	/s/ Firooz Zandi 5-01-00 <small>CHIEF HIGHWAY ENGINEER DATE</small>
<small>DESIGN STANDARDS ENGINEER</small>	<small>DESIGN STANDARDS ENGINEER</small>