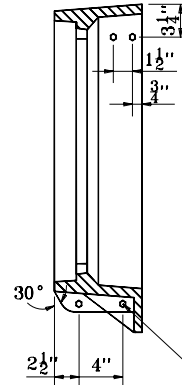
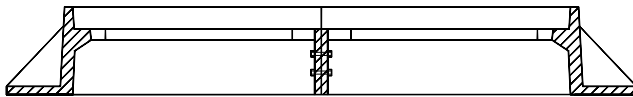


**PLAN**



**SECTION B-B**

4 - 5/8" hex head stainless steel cap screws and flat washers



**SECTION A-A**

INDIANA DEPARTMENT OF TRANSPORTATION	
CASTING TYPE 5	
ALTERNATE BOLTED FRAME	
SEPTEMBER 2001	
STANDARD DRAWING NO. E 720-ICCA-02	
	<i>/s/ Anthony L. Uremovich</i> 9-04-01 <small>DESIGN STANDARDS ENGINEER      DATE</small>
	<i>/s/ Firooz Zandi</i> 9-04-01 <small>CHIEF HIGHWAY ENGINEER      DATE</small>
<small>DESIGN STANDARDS ENGINEER</small>	