

**FRAME
CASTING TYPE 8**

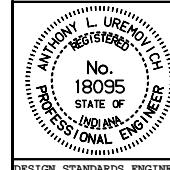
INDIANA DEPARTMENT OF TRANSPORTATION

CASTING TYPE 8

FRAME

SEPTEMBER 1998

STANDARD DRAWING NO. **E 720-ICCA-04**



DETAILS PLACED IN THIS FORMAT 11-15-99

/s/ Anthony L. Uremovich 11-15-99
DESIGN STANDARDS ENGINEER DATE

/s/ Firooz Zandi 11-15-99
CHIEF HIGHWAY ENGINEER DATE

DESIGN STANDARDS ENGINEER

ORIGINALLY APPROVED 9-01-98