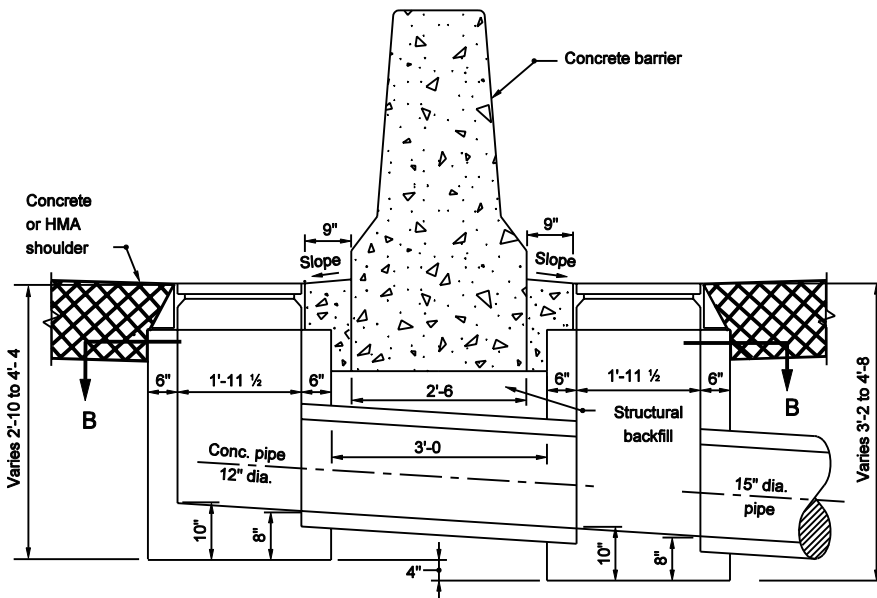


PLAN



SECTION A-A

NOTES:

1. Each inlet Type H includes two boxes, the connector pipe between the inlet boxes.

INDIANA DEPARTMENT OF TRANSPORTATION	
INLET TYPE H	
SEPTEMBER 2003	
STANDARD DRAWING NO. E 720-INST-05A	
	/s/ Richard L. VanCleave 9-02-03 DESIGN STANDARDS ENGINEER DATE
	/s/ Richard K. Smutzer 9-02-03 CHIEF HIGHWAY ENGINEER DATE
DESIGN STANDARDS ENGINEER	