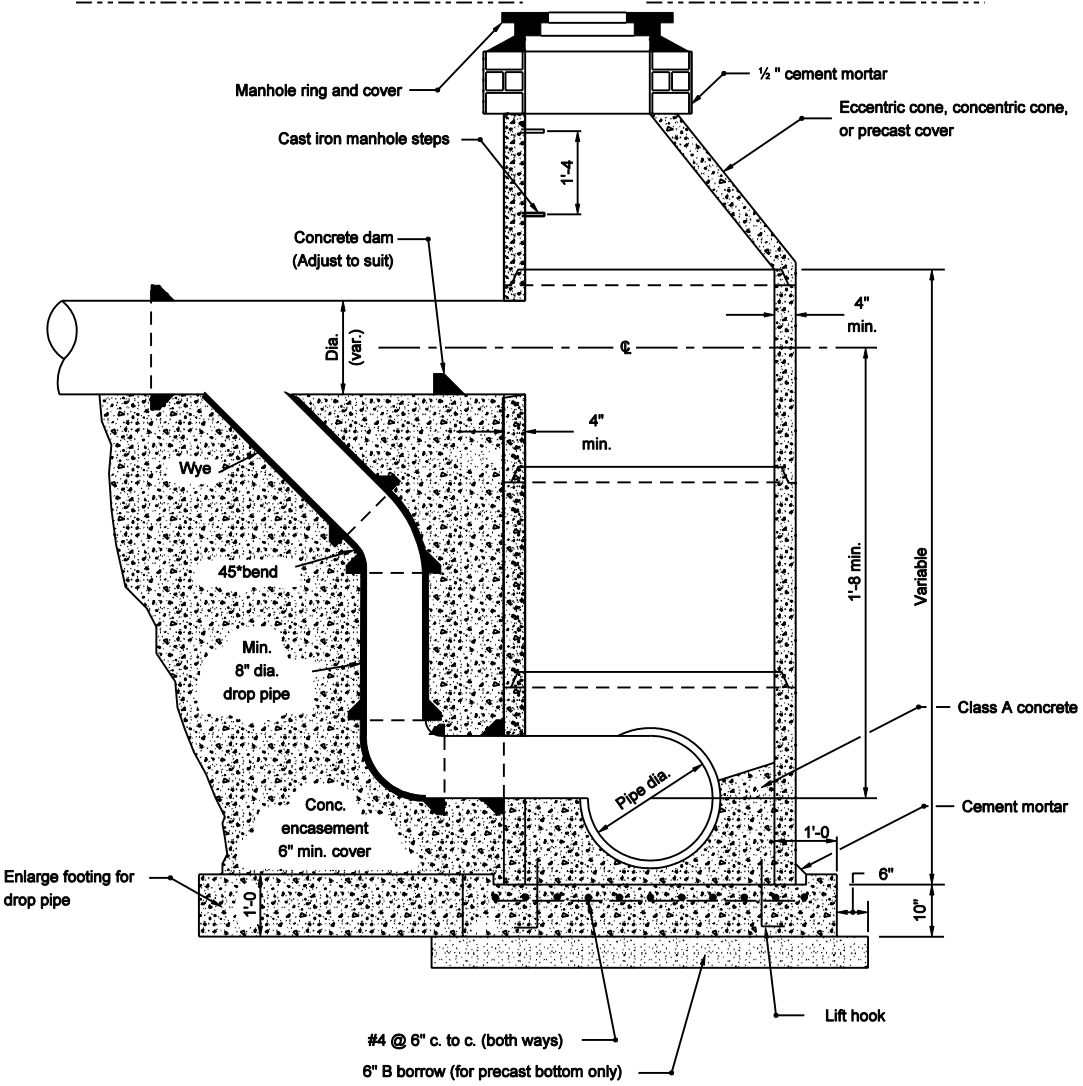


**NOTES**

- Drop pipe may be used with manhole type D, E, F, or G. Such manhole shall be referred to as drop manhole type D, E, F, or G.



**SECTION**

INDIANA DEPARTMENT OF TRANSPORTATION	
<b>DROP MANHOLE TYPE C</b>	
SEPTEMBER 2003	
STANDARD DRAWING NO. E 720-MHST-03	
	/s/ Richard L. VanCleave    9-02-03 DESIGN STANDARDS ENGINEER    DATE
	/s/ Richard K. Smutzer    9-02-03 CHIEF HIGHWAY ENGINEER    DATE
DESIGN STANDARDS ENGINEER	