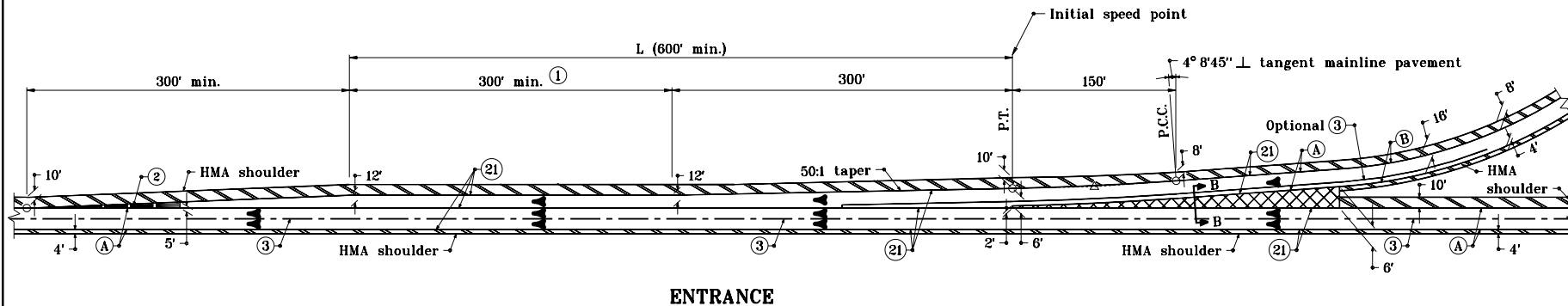


**GENERAL NOTES**

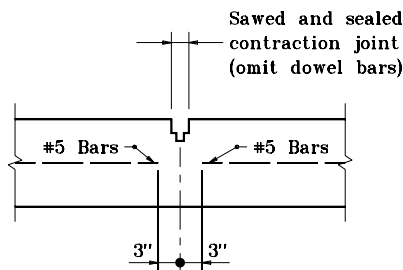
- ① Required additional length of L above the 600' minimum shall be added to the length of this parallel lane segment. (Example: If required L = 720', then this parallel lane segment length = 420'). See tables on Standard Drawing E 401-REBS-04.
- ② Ear construction type A: 2 lines of #5 bars required (Est. weight = 255 lb). Transverse sawed and sealed joint, in line with pavement contraction joint, shall extend through ear construction. The #5 bars shall be discontinued at such joints. See Detail B-B.
- 3. See Standard Drawing E 401-REBS-03 for Section B-B.

**CURVE DATA**

R = 2864.79'  
 $\Delta$  = 3°00'00"  
 T = 75.02'  
 L = 150'  
 E = 0.98'



**ENTRANCE**



**DETAIL B-B**

**LEGEND**

- (A) Pavement type and thickness as specified for the mainline.
- (B) Pavement type and thickness as specified for ramps.
- (3) Longitudinal joint
- (21) Longitudinal construction joint
- [Cross-hatched pattern] HMA shoulder (Thickness of mainline pavement)
- [Diagonal hatched pattern] HMA shoulder (Thickness as specified on Typical Sections)

INDIANA DEPARTMENT OF TRANSPORTATION	
<b>RAMP ENTRANCE TERMINAL HMA SHOULDER</b>	
SEPTEMBER 1999	
<b>STANDARD DRAWING NO. E 401-REBS-01</b>	
	DETAILS PLACED IN THIS FORMAT 11-15-99
	/s/ Anthony L. Uremovich 11-15-99 DESIGN STANDARDS ENGINEER DATE
	/s/ Firooz Zandi 11-15-99 CHIEF HIGHWAY ENGINEER DATE
DESIGN STANDARDS ENGINEER	ORIGINALLY APPROVED 9-01-99