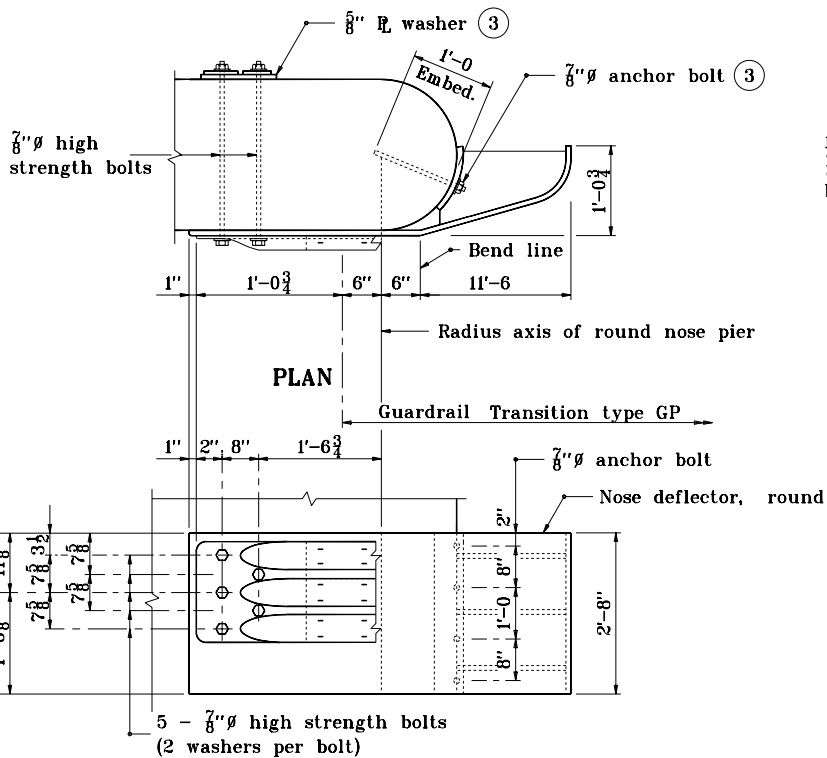


Radius	A	B	C	D
1'-0	2 $\frac{3}{4}$	9 $\frac{1}{2}$	11 $\frac{1}{4}$ "	2 $\frac{3}{4}$ "
1'-1 $\frac{1}{2}$	2 $\frac{3}{8}$	10 $\frac{1}{2}$	9 $\frac{3}{8}$ "	4 $\frac{3}{8}$ "
1'-3	1 $\frac{3}{4}$	11 $\frac{1}{2}$	8 $\frac{3}{8}$ "	4 $\frac{3}{8}$ "
1'-4 $\frac{1}{2}$	1 $\frac{1}{2}$	12 $\frac{1}{2}$	7 $\frac{3}{8}$ "	7 $\frac{3}{8}$ "
1'-6	1 $\frac{1}{4}$	13 $\frac{1}{2}$	6 $\frac{1}{4}$ "	8 $\frac{3}{4}$ "

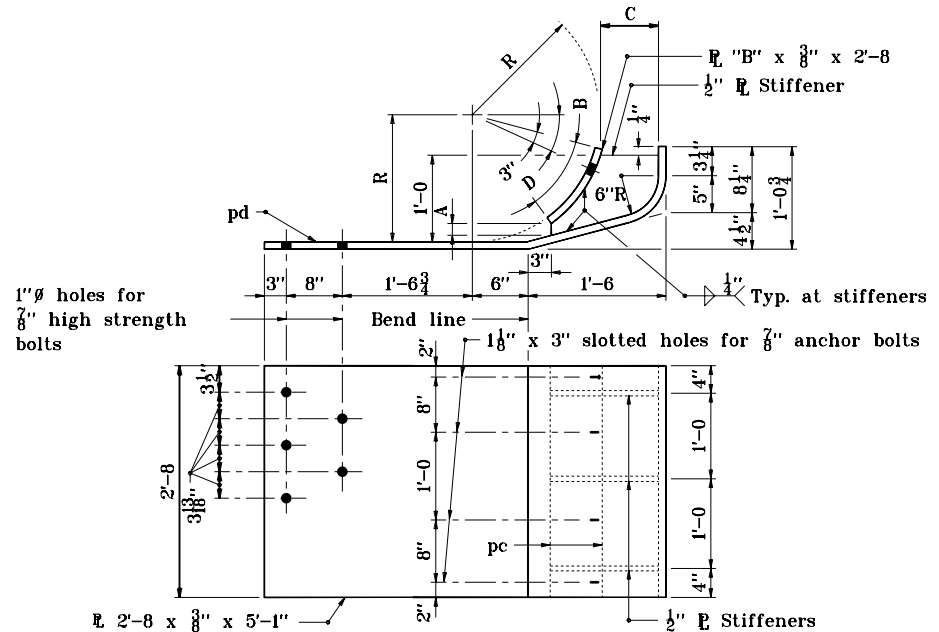


**ELEVATION**

**ATTACHMENT AT ROUND NOSE PIER**

**GENERAL NOTES**

1. This drawing shall be used where guardrail transition type GP is specified to connect W-beam guardrail to a pier or frame bent collision wall.
2. The details on this drawing are for the assembly and installation of the deflector components for connecting guardrail transition type GP to a pier or frame bent collision wall.
3. See Standard Drawing E 601-TPGP-01 for anchor bolt and plate washer details.



**DETAIL OF NOSE DEFLECTOR - ROUND**

INDIANA DEPARTMENT OF TRANSPORTATION	
<b>TRANSITION AT PIER TYPE GP</b>	
SEPTEMBER 1998	
<b>STANDARD DRAWING NO. E 601-TPGP-02</b>	
DETAILS PLACED IN THIS FORMAT	11-15-99
/s/ Anthony L. Uremovich	11-15-99
DESIGN STANDARDS ENGINEER	DATE
/s/ Firooz Zandi	11-15-99
CHIEF HIGHWAY ENGINEER	DATE
DESIGN STANDARDS ENGINEER	ORIGINALLY APPROVED
	9-01-98