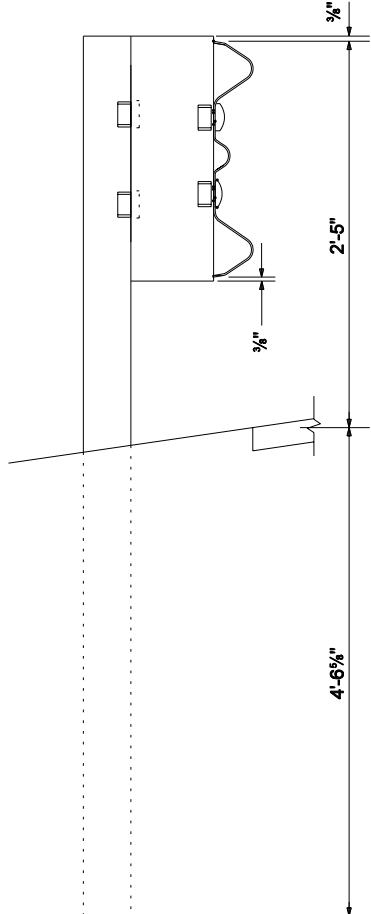


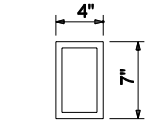
**FRONT VIEW**

**BACK VIEW**

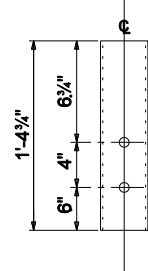
**W 6 x 9 POST DETAILS**



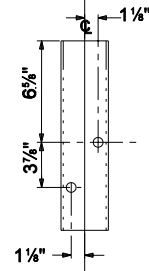
**SIDE VIEW**



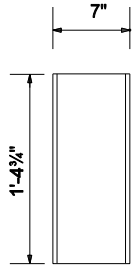
**TOP VIEW**



**FRONT VIEW**



**BACK VIEW**



**SIDE VIEW**

**TS 7 x 4 x 3/16" BLOCK DETAILS**

**NOTE:**

1. All holes drilled or punched to 3/4" dia.
2. For post numbers, see Standard Drawing E 601-TTGB-01.
3. Hole pattern for posts numbers 1 thru 7 may be drilled in back flange. See Standard drawing E 601-TTGB-03

**POST 8**

INDIANA DEPARTMENT OF TRANSPORTATION	
<b>GUARDRAIL TRANSITION TYPE TGB MARCH 2004</b>	
<b>STANDARD DRAWING NO. E 601-TTGB-04</b>	
	/s/ Richard L. VanCleave      3-01-04 DESIGN STANDARDS ENGINEER      DATE
DESIGN STANDARDS ENGINEER	/s/ Richard K. Smutzer      3-01-04 CHIEF HIGHWAY ENGINEER      DATE