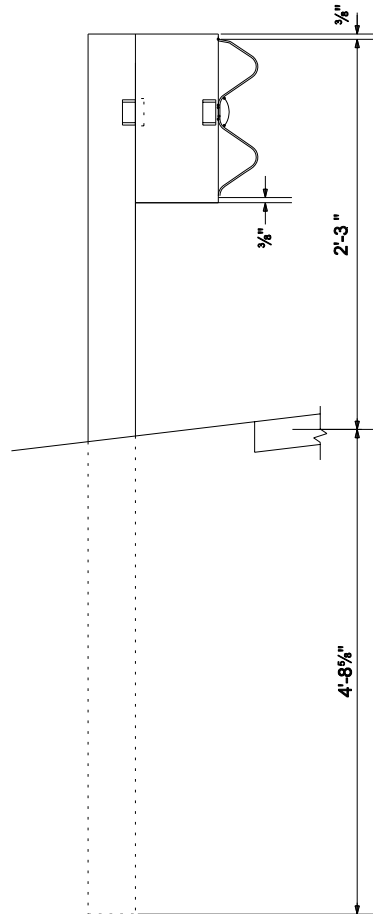


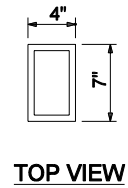
FRONT VIEW

BACK VIEW

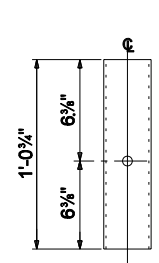
W 6 x 9 POST DETAILS



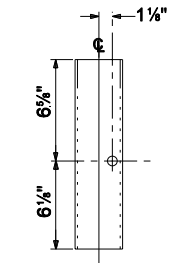
SIDE VIEW



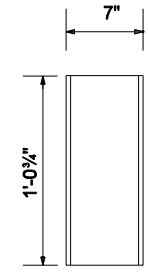
TOP VIEW



FRONT VIEW



BACK VIEW



SIDE VIEW

TS 7 x 4 x 3/16" BLOCK DETAILS

NOTE:

1. All holes drilled or punched to 3/4" dia.
2. For post numbers, see standard Drawing E 601-TTGB-01.
- ③ Hole pattern for posts numbers 1 thru 7 may be drilled in back flange. See Standard drawing E 601-TTGB-03

POSTS 9 AND 10

INDIANA DEPARTMENT OF TRANSPORTATION	
GUARDRAIL TRANSITION TYPE TGB	
MARCH 2004	
STANDARD DRAWING NO. E 601-TTGB-05	
	/s/ Richard L. VanCleave 3-02-04 DESIGN STANDARDS ENGINEER DATE
DESIGN STANDARDS ENGINEER	/s/ Richard K. Smutzer 3-02-04 CHIEF HIGHWAY ENGINEER DATE