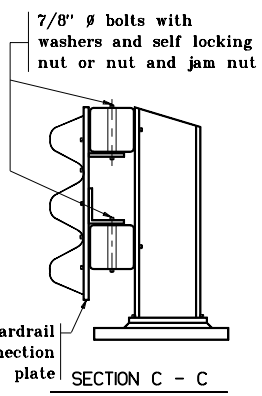
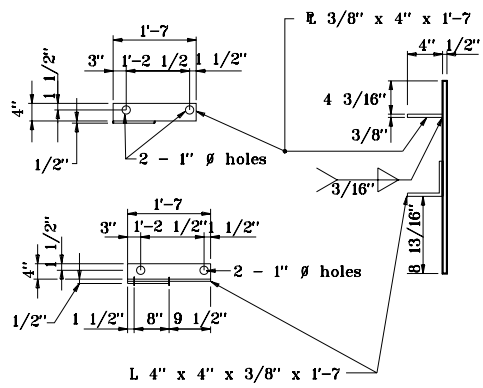
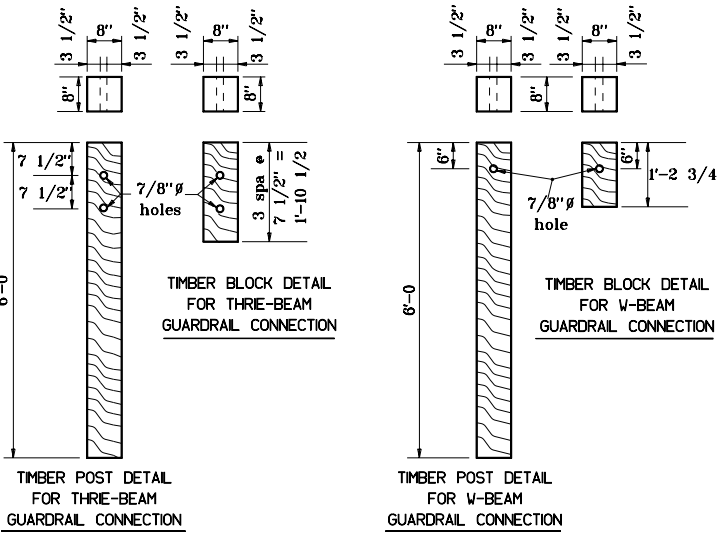


ELEVATION - TRANSITION CONNECTION

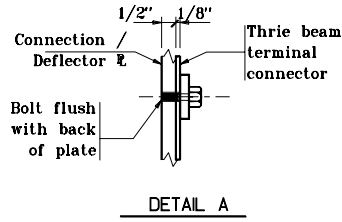
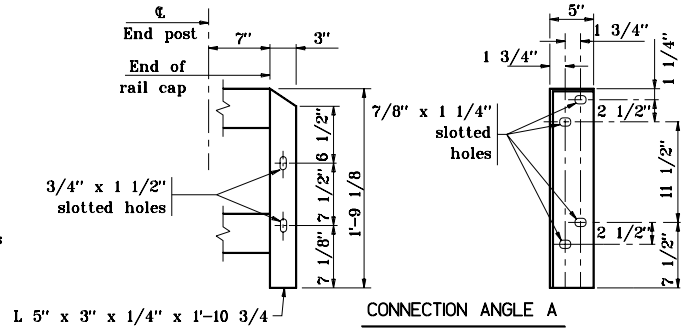
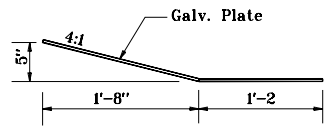
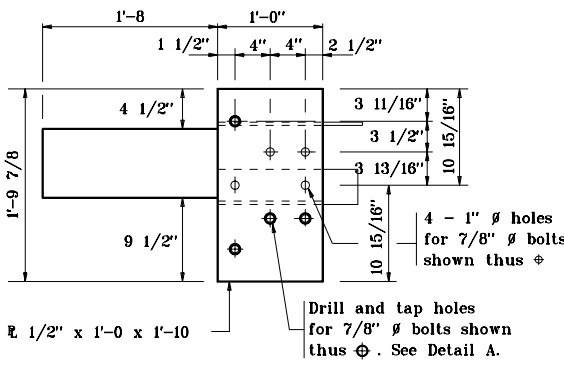


NOTES:

1. See Standard Drawing E 706-TUTM-03 for railing tubing cap details.



GUARDRAIL CONNECTION / DEFLECTOR PLATE DETAILS



INDIANA DEPARTMENT OF TRANSPORTATION
GUARDRAIL TRANSITION, TGT
 MAY 2000
 STANDARD DRAWING NO. E 601-TTGT-02

	/s/ Anthony L. Uremovich 5-01-00 <small>DESIGN STANDARDS ENGINEER DATE</small>
	/s/ Firooz Zandi 5-01-00 <small>CHIEF HIGHWAY ENGINEER DATE</small>