

**RUBBER HOSE DETAIL**

Two 2' x 2' wooden stakes  
 Wrap rodent protection screenwire around stakes, reinforcement rod not required.

Existing grade

Mulch

Root stock

Backfill material

Approved rubber hose

2" Max.

14 Ga. min. galvanized tie wire

4" Min.

5'-0 (max.)

6" Min.

3" Min.

1'-6 Min.

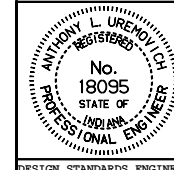
Length of stakes varies

INDIANA DEPARTMENT OF TRANSPORTATION

**PLANTING BARE ROOT TREE**

APRIL 1995

STANDARD DRAWING NO. E 622-LSPL-04



DETAILS PLACED IN THIS FORMAT 11-15-99

/s/ Anthony L. Uremovich 11-15-99  
 DESIGN STANDARDS ENGINEER DATE

/s/ Firooz Zandi 11-15-99  
 CHIEF HIGHWAY ENGINEER DATE

DESIGN STANDARDS ENGINEER

ORIGINALLY APPROVED 4-01-95