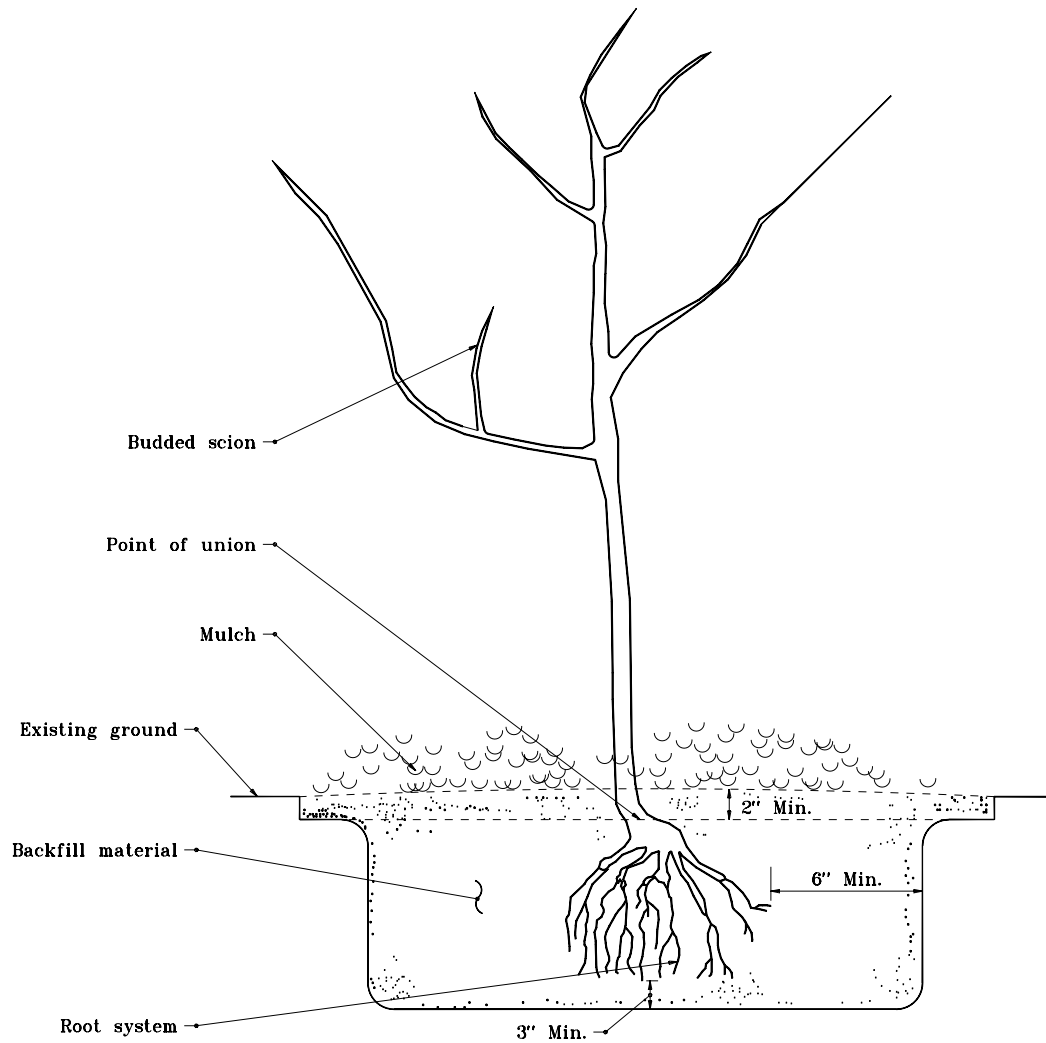


GENERAL NOTES

1. This detail to be followed in the planting of grafted bare root stock.

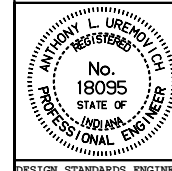


INDIANA DEPARTMENT OF TRANSPORTATION

PLANTING GRAFTED TREE

APRIL 1995

STANDARD DRAWING NO. **E 622-LSPL-05**



DETAILS PLACED IN THIS FORMAT 11-15-99

/s/ Anthony L. Uremovich 11-15-99
DESIGN STANDARDS ENGINEER DATE

/s/ Firooz Zandi 11-15-99
CHIEF HIGHWAY ENGINEER DATE

DESIGN STANDARDS ENGINEER

ORIGINALLY APPROVED 4-01-95