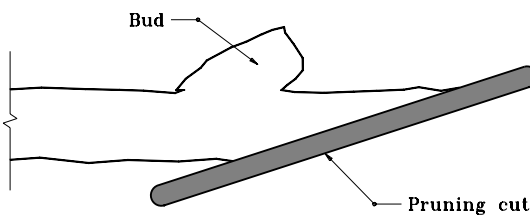


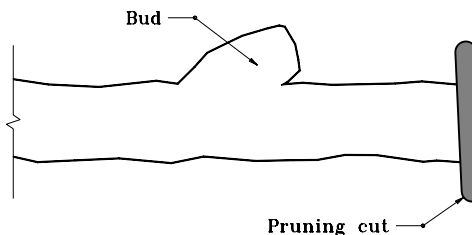
**GENERAL NOTES**

- ① Cut at bud starts opposite the base of bud and slants up toward top of bud.
- ② Cut at secondary branch shall be parallel to remaining branch.

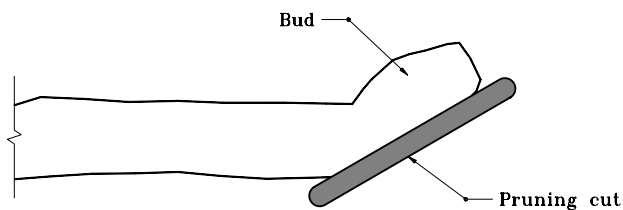
**Improper Cut**  
Pruning cut too slanting (too much heartwood is exposed). Die-back will occur.



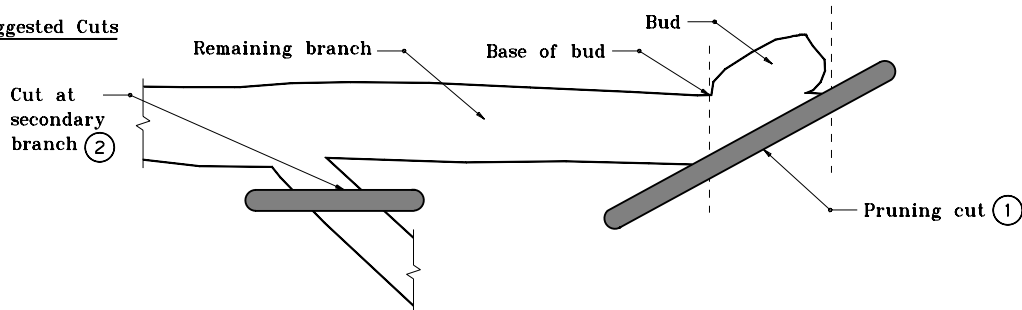
**Improper Cut**  
Pruning cut too far beyond bud. Die-back will occur.



**Improper Cut**  
Pruning cut too close to bud (will interfere with bud growth).



**Suggested Cuts**

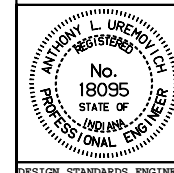


INDIANA DEPARTMENT OF TRANSPORTATION

**PRUNING PROCEDURE  
TREES AND SHRUBS**

APRIL 1995

STANDARD DRAWING NO. E 622-LSPR-06



DETAILS PLACED IN THIS FORMAT 11-15-99

/s/ Anthony L. Uremovich 11-15-99  
DESIGN STANDARDS ENGINEER DATE

/s/ Firooz Zandi 11-15-99  
CHIEF HIGHWAY ENGINEER DATE

DESIGN STANDARDS ENGINEER

ORIGINALLY APPROVED 4-01-95