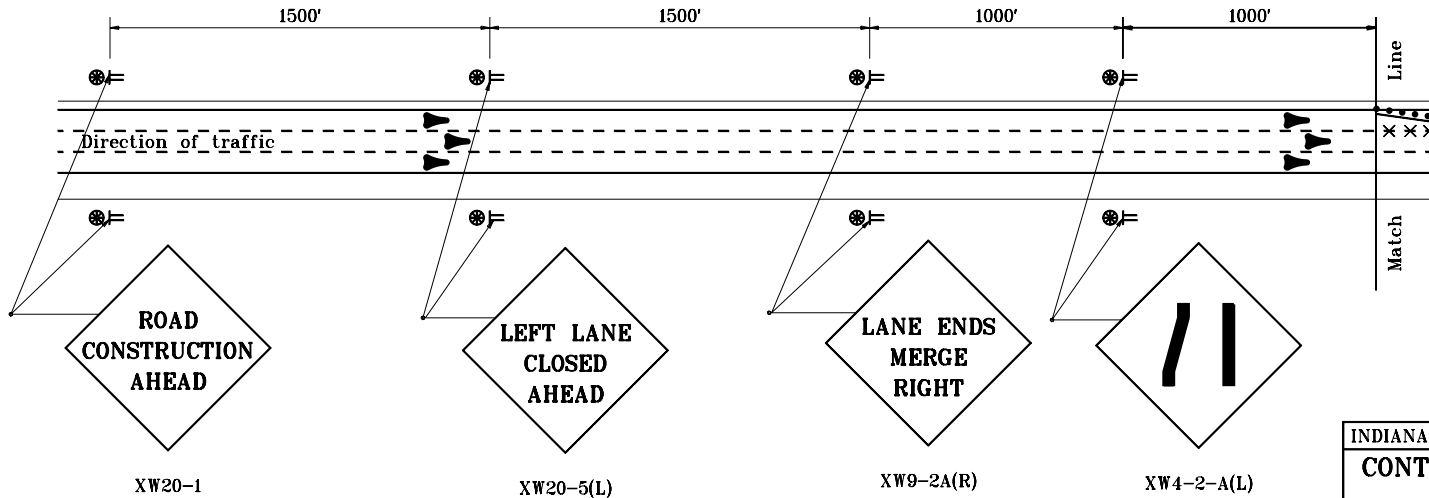


**TYPICAL APPLICATION ON 6 - LANE DIVIDED HIGHWAY WHERE LEFT LANE IS CLOSED**

**END  
CONSTRUCTION**

XG20-2



**TYPICAL ADVANCE SIGNING**

**GENERAL NOTES**

1. See Standard Drawing E 801-TCLG-01 for standard notes and legend.

INDIANA DEPARTMENT OF TRANSPORTATION	
CONTINUOUS LANE CLOSURES	
LEFT LANE CLOSED	
JANUARY 2000	
STANDARD DRAWING NO. E 801-TCLC-04	
	/s/ Anthony L. Uremovich 5-01-97 DESIGN STANDARDS ENGINEER DATE
	/s/ Donald W. Lucas 5-01-97 CHIEF HIGHWAY ENGINEER DATE
DESIGN STANDARDS ENGINEER	