

SIGN NUMBER	SIGN MESSAGE	POST DESIGN		SIGN SIZE	SIGN COLOR		BORDER WIDTH	MARGIN WIDTH	LETTER HEIGHT SERIES-LINE 1	LETTER HEIGHT SERIES-LINE 2	LETTER HEIGHT SERIES-LINE 3	LETTER HEIGHT SERIES-LINE 4	ARROW SIZE		CORNER RADIUS	NUMBER OF POSTS	
		4 x 4 WOOD	STEEL		BACKGROUND	COPY							HEAD	SHAFT		ONE	TWO
XW101-1	"Mowing Crews Ahead"	*	A	36 x 36	Orange	Black	3/4	1/2	6 - Series C	6 - Series C	6 - Series C				2 1/4		X
XW101-1-A	"Mowing Crews Ahead"	*	B	48 x 48	Orange	Black	1 1/4	3/4	8 - Series C	8 - Series C	8 - Series C				3		X
XW102-1	"Mowing Crews Next _____ Miles"	*	A	36 x 36	Orange	Black	3/4	1/2	6 - Series C	6 - Series C	4 - Series C	4 - Series C			2 1/4		X
XW102-1-A	"Mowing Crews Next _____ Miles"	*	B	48 x 48	Orange	Black	1 1/4	3/4	8 - Series C	8 - Series C	6 - Series C	6 - Series C			3		X
XW103-1	"Watch For Stopped Traffic"	*	B	48 x 48	Orange	Black	1 1/4	3/4	7 - Series C	7 - Series C	7 - Series C				3		X
XW104-1	"Overhead Sign Installation"	*	B	60 x 24	Orange	Black	1/2	3/8	6 - Series C	6 - Series C					1 1/2		X
XW105-1-A	"Right Lane Exit Open"	*	B	48 x 48	Orange	Black	1 1/4	3/4	6 - Series C	6 - Series C					3		X
XW106-1-A	"Exit Closed"	*	B	48 x 48	Orange	Black	1 1/4	3/4	7 - Series C	7 - Series C					3		X
XW106-2-A	"Exit Open"	*	B	48 x 48	Orange	Black	1 1/4	3/4	7 - Series C	7 - Series C					3		X
XW108-1	"Utility Work Ahead"	*	A	36 x 36	Orange	Black	3/4	1/2	6 - Series D	6 - Series D	6 - Series D				2 1/4		X
XW108-1-A	"Utility Work Ahead"	*	B	48 x 48	Orange	Black	1 1/4	3/4	6 - Series C	6 - Series C	6 - Series C				3		X
XW109-1	"Exit" (above black arrow)	*	B	48 x 48	Orange	Black	1 1/4	3/4	12 - Series D						3		X
R2-1	"Speed limit _____"	*	A	24 x 30	White	Black	1/2	3/8	4 - Series E	4 - Series E	10 - Series E				1/2	X	
R2-1-B	"Speed limit _____"	*	B	48 x 60	White	Black	1 1/4	3/4	8 - Series E	8 - Series E	16 - Series E				3		X
R2-15b-B	"Reduced Speed _____ Ahead"	----	----	48 x 60	White	Black	1 1/4	3/4	8 - Series E	8 - Series E	14 - Series E	8 - Series E			3		----
R3-2-A (R or L)	(No _____ turn symbol)	*	A	30 x 30	White	Black	3/4	3/8							2	X	
R3-2-C (R or L)	(No _____ turn symbol)	*	B	48 x 48	White	Black	1 1/4	3/4							3		X
R4-1	"Do Not Pass"	*	A	24 x 30	White	Black	1/2	3/8	6 - Series D	6 - Series D	5 - Series D				1 7/8	X	
R4-1-B	"Do Not Pass"	*	B	48 x 60	White	Black	1 1/4	3/4	10 - Series D	10 - Series D	10 - Series D				3		X
R5-1-A	"Do Not Enter" (inside symbol)	*	A	36 x 36	Red	White	Radius 17 1/2		5 - Series D	6 x 30 Bar	5 - Series D				2 1/4		X
R5-1-B	"Do Not Enter" (inside symbol)	*	B	48 x 48	Red	White	Radius 23 1/2		6 - Series D	8 x 40 Bar	6 - Series D				3		X
R6-1 (R or L)	"One Way" (inside white arrow)	*	A	36 x 36	Black & White	Black	----	3/8	4 - Series D				7 1/2 x 8 1/2	22 1/4 x 5 1/4	1 1/2		X
R6-2-A (R or L)	"One Way" (above black arrow)	*	A	24 x 30	White	Black	1/2	3/8	6 - Series D	6 - Series D			5 1/4 x 6	8 x 2 1/4	1 1/2	X	
R11-2	"Road Closed"	*	B	48 x 30	White	Black	3/4	3/8	6 - Series C	6 - Series C					1 7/8		X
R11-3	"Road Closed _____ Miles Ahead "Local Traffic Only"	*	B	60 x 30	White	Black	3/4	3/8	6 - Series C	5 - Series C	4 - Series C				1 7/8		X
R11-4	"Road Closed To Thru Traffic"	*	B	60 x 30	White	Black	3/4	3/8	6 - Series C	5 - Series C	6 - Series C				1 7/8		X
R12-1	"Weight Limit _____ Tons"	*	A	24 x 30	White	Black	1/2	3/8	4 - Series D	4 - Series D	5 - Series E	5 - Series D			1 1/2	X	
R12-1-A	"Weight Limit _____ Tons"	*	B	36 x 48	White	Black	3/4	1/2	6 - Series D	6 - Series D	8 - Series E	10 - Series D			2 1/4		X
S 4-4	"When Flashing" plate	----	----	48 x 20	White	Black	1/2	3/8	5 - Series D	5 - Series D					1 1/2	----	----

* Wood post permitted.

GENERAL NOTES

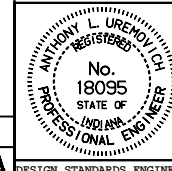
- See Standard Drawing 801-TCSN-11 for additional general notes.
- All dimensions are in inches.

INDIANA DEPARTMENT OF TRANSPORTATION

SIGN DESIGN DETAILS

SEPTEMBER 1999

STANDARD DRAWING NO. E 801-TCSN-13



/s/ Anthony L. Uremovich 9-01-99
DESIGN STANDARDS ENGINEER DATE

/s/ Donald W. Lucas 9-01-99
CHIEF HIGHWAY ENGINEER DATE

Source Sheet: Det3A,
Source Sheet: Det5, 5A

DESIGN STANDARDS ENGINEER