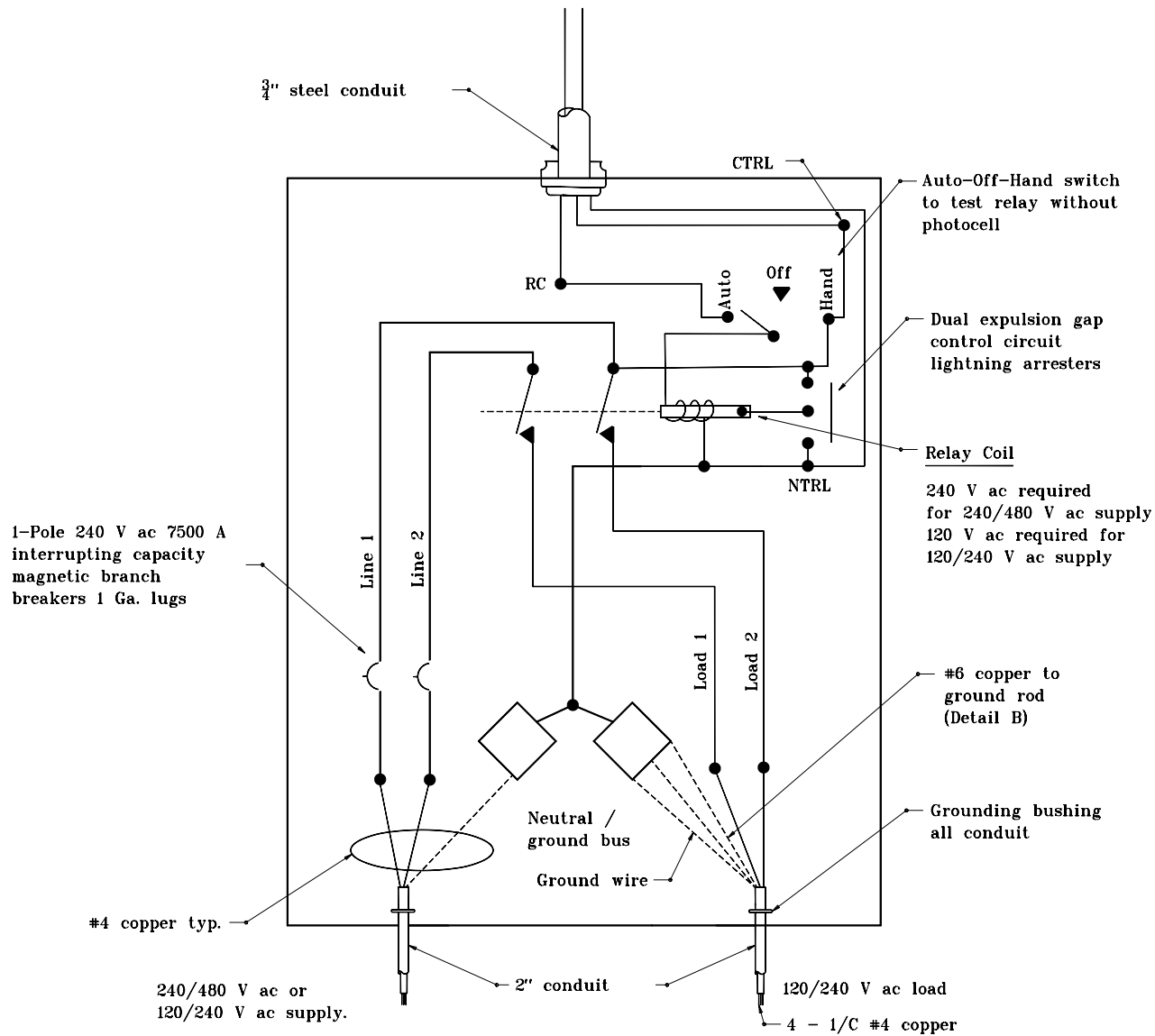


GENERAL NOTES

To Photo Control:
 240 V ac required for 240/480 V ac supply.
 120 V ac required for 120/240 V ac supply.



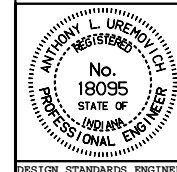
**TYPICAL CABINET WIRING,
 TYPE 1**

INDIANA DEPARTMENT OF TRANSPORTATION

LIGHT SERVICE POINT DETAILS

JANUARY 2000

STANDARD DRAWING NO. E 807-LTSP-03



/s/ Anthony L. Uremovich 1-03-00
 DESIGN STANDARDS ENGINEER DATE

/s/ Firooz Zandi 1-03-00
 CHIEF HIGHWAY ENGINEER DATE

DESIGN STANDARDS ENGINEER