

Type K  $6 \text{ m} \leq W < 8 \text{ m}$

$L = 18 \text{ m}$

Type L  $8 \text{ m} \leq W < 9 \text{ m}$

**PLAN**

**NOTES :**

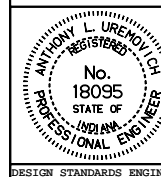
- See Standard Drawing 610-PRCO-01 for Legend and Section A-A.

All dimensions are in mm unless otherwise specified.

INDIANA DEPARTMENT OF TRANSPORTATION

**PUBLIC ROAD CROSSOVERS  
TYPE K & L  
MAY 2000**

STANDARD DRAWING NO. **610-PRCO-02**



*/s/ Anthony L. Uremovich* 5-01-00  
DESIGN STANDARDS ENGINEER DATE

*/s/ Firooz Zandi* 5-01-00  
CHIEF HIGHWAY ENGINEER DATE

DESIGN STANDARDS ENGINEER