

$L = 18 \text{ m}$   
 Type M  $9 \text{ m} \leq W < 14 \text{ m}$   
 $L = 15 \text{ m}$   
 Type N  $14 \text{ m} \leq W < 20 \text{ m}$

**PLAN**

**NOTES :**

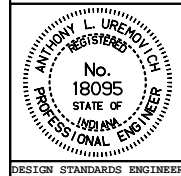
- See Standard Drawing 610-PRCO-01 for Legend and Section A-A.

All dimensions are in mm unless otherwise specified.

INDIANA DEPARTMENT OF TRANSPORTATION

**PUBLIC ROAD CROSSOVERS**  
**TYPE M & N**  
 MAY 2000

STANDARD DRAWING NO. **610-PRCO-03**



/s/ Anthony L. Uremovich 5-01-00  
 DESIGN STANDARDS ENGINEER DATE

/s/ Firooz Zandi 5-01-00  
 CHIEF HIGHWAY ENGINEER DATE

DESIGN STANDARDS ENGINEER