

GENERAL NOTES

1. Signs R11-2, R11-3, R11-4, R5-1-A and R5-1-B shall be encapsulated lens reflective sheeting background.
2. See Standard Drawing 801-TCSN-11 for additional general notes.
- ③ A 0.7 m X 0.25 m metal plate, covered with federal orange reflective material with black numerals designating predetermined distance, may be attached over the word "AHEAD" to more specifically locate the subject hazard.



R11-4



R5-1-A
R5-1-B

①



R11-3



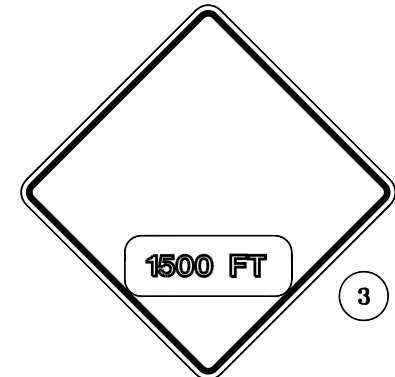
R11-2



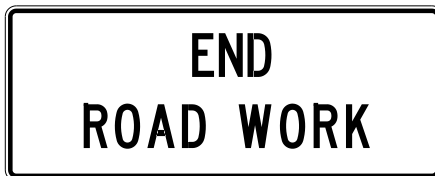
XG20-1



XG20-4



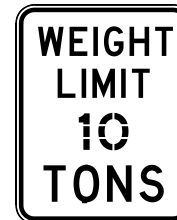
③



XG20-2a



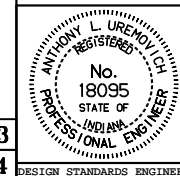
XG20-2



R12-1
R12-1-A

①

All dimensions are in mm unless otherwise specified.
 INDIANA DEPARTMENT OF TRANSPORTATION
 TRAFFIC CONTROL
 SIGNS
 SEPTEMBER 1997
 STANDARD DRAWING NO. 801-TCSN-04



/s/ Anthony L. Uremovich 9-01-97
 DESIGN STANDARDS ENGINEER DATE

/s/ Donald W. Lucas 9-01-97
 CHIEF HIGHWAY ENGINEER DATE

Source Sheet: Det 3
 Source Sheet: Det 4