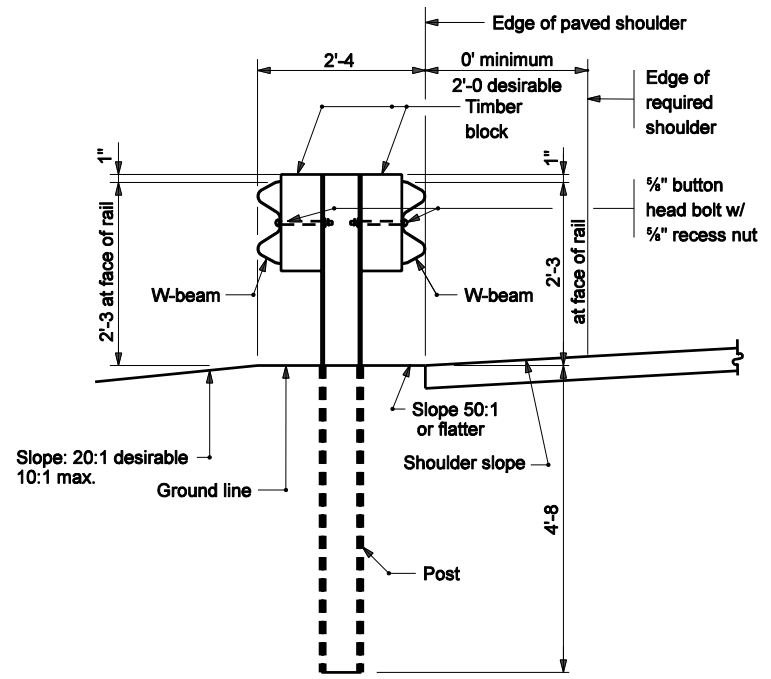


**TYPICAL W-BEAM INSTALLATION**



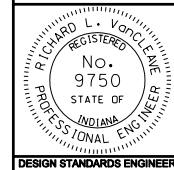
**TYPICAL DOUBLE FACED W-BEAM INSTALLATION**

INDIANA DEPARTMENT OF TRANSPORTATION

**W-BEAM  
GUARDRAIL ASSEMBLIES**

MARCH 2004

STANDARD DRAWING NO. E 601-WBGA-01



/s/ Richard L. VanCleave 3-01-04  
DESIGN STANDARDS ENGINEER DATE

/s/ Richard K. Smutzer 3-01-04  
CHIEF HIGHWAY ENGINEER DATE

DESIGN STANDARDS ENGINEER