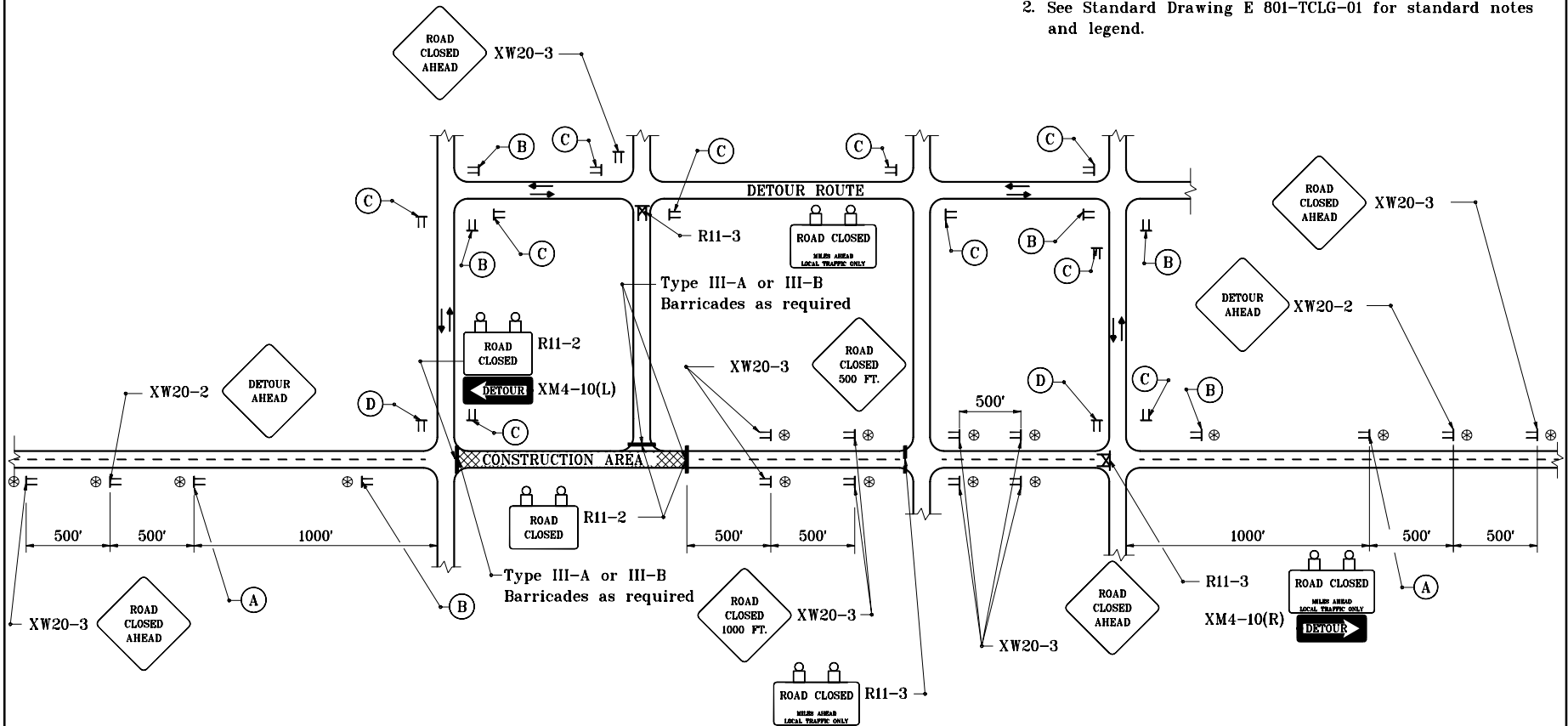


**GENERAL NOTES**

1. For detour route marker assemblies (A), (B), (C), and (D) see Standard Drawing E 801-TCDT-03.
2. See Standard Drawing E 801-TCLG-01 for standard notes and legend.



**TYPICAL APPLICATIONS OF TRAFFIC CONTROL DEVICES FOR A RURAL DETOUR**

INDIANA DEPARTMENT OF TRANSPORTATION	
<b>RURAL DETOUR</b>	
SEPTEMBER 1997	
<b>STANDARD DRAWING NO. E 801-TCDT-01</b>	
DETAILS PLACED IN THIS FORMAT 11-15-99	
	/s/ Anthony L. Uremovich 11-15-99 DESIGN STANDARDS ENGINEER DATE
	/s/ Firooz Zandi 11-15-99 CHIEF HIGHWAY ENGINEER DATE
	ORIGINALLY APPROVED 9-02-97