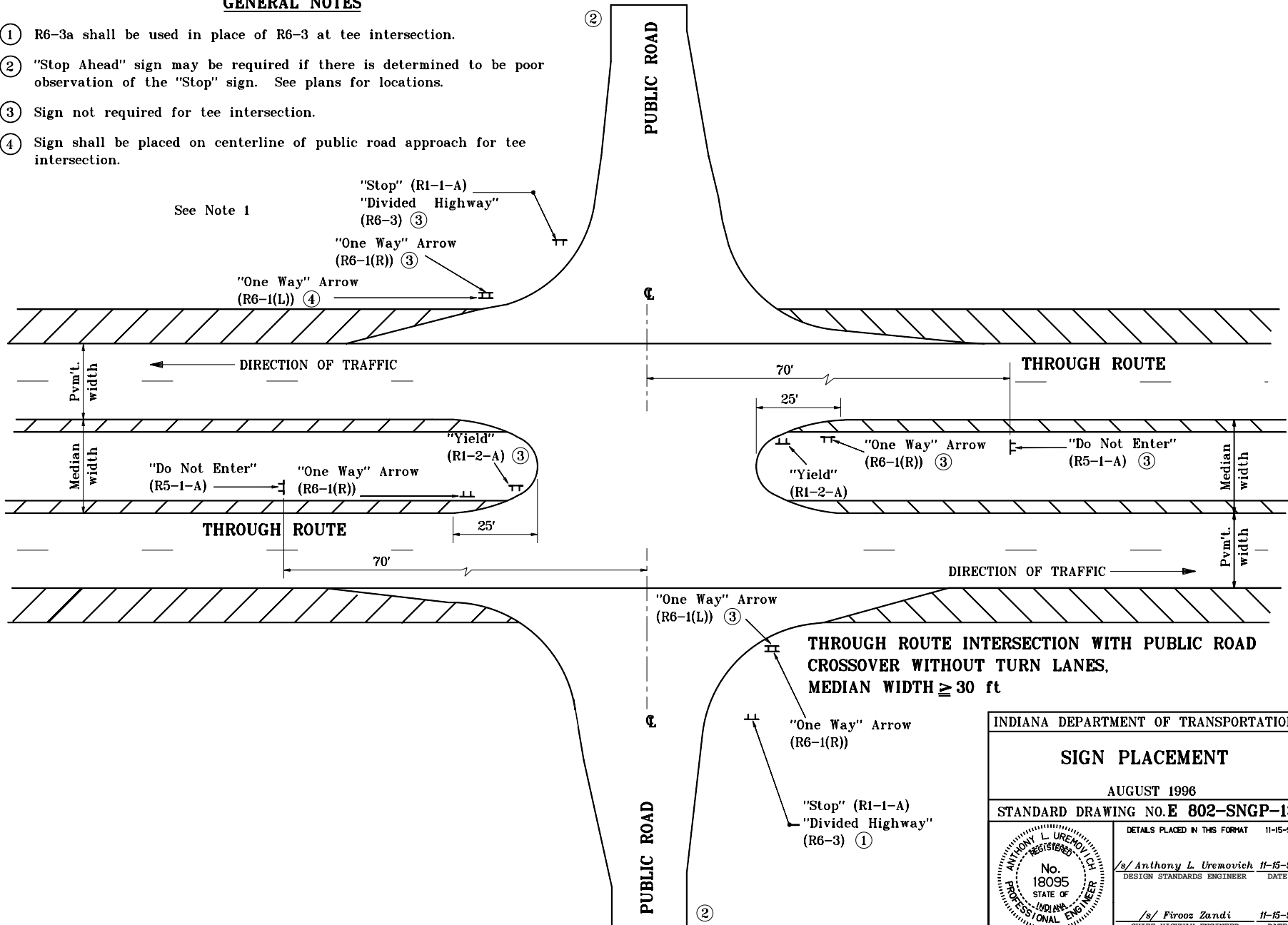


GENERAL NOTES

- ① R6-3a shall be used in place of R6-3 at tee intersection.
- ② "Stop Ahead" sign may be required if there is determined to be poor observation of the "Stop" sign. See plans for locations.
- ③ Sign not required for tee intersection.
- ④ Sign shall be placed on centerline of public road approach for tee intersection.

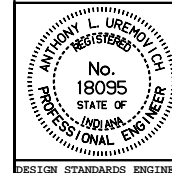


INDIANA DEPARTMENT OF TRANSPORTATION

SIGN PLACEMENT

AUGUST 1996

STANDARD DRAWING NO. **E 802-SNGP-13**



DETAILS PLACED IN THIS FORMAT 11-15-99

/s/ Anthony L. Uremovich 11-15-99
DESIGN STANDARDS ENGINEER DATE

/s/ Firooz Zandi 11-15-99
CHIEF HIGHWAY ENGINEER DATE

DESIGN STANDARDS ENGINEER

ORIGINALLY APPROVED 8-01-96