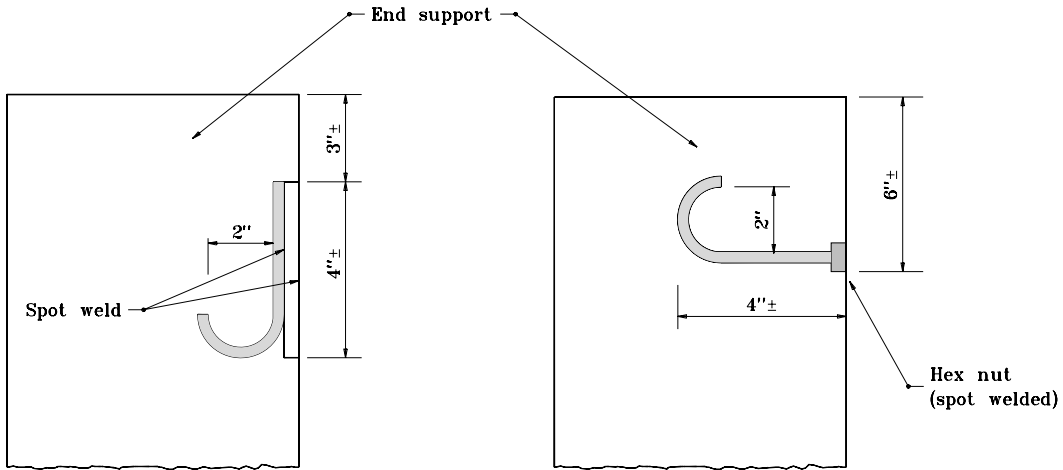


**J HOOKS**



**TYPE A**

**TYPE B**

**NOTES:**

1. Type A hook shall consist of two  $\frac{1}{4}$  in. to  $\frac{3}{8}$  in. stainless steel bars, constructed as shown in detail above and spot welded to inside of the end support.
2. Type B hook shall consist of one  $\frac{1}{4}$  in. to  $\frac{3}{8}$  in. stainless steel bar shaped as shown in detail above, threaded on straight end and fastened to inside by means of a hex nut spot welded to the end support.

INDIANA DEPARTMENT OF TRANSPORTATION	
<b>SIGN STRUCTURE TRUSS</b>	
<b>DETAILS</b>	
SEPTEMBER 2001	
STANDARD DRAWING NO.E 802-SNOH-02	
	/s/ Anthony L. Uremovich 9-04-01 <small>DESIGN STANDARDS ENGINEER      DATE</small>
	/s/ Firooz Zandi 9-04-01 <small>CHIEF HIGHWAY ENGINEER      DATE</small>
<small>DESIGN STANDARDS ENGINEER</small>	<small>CHIEF HIGHWAY ENGINEER</small>