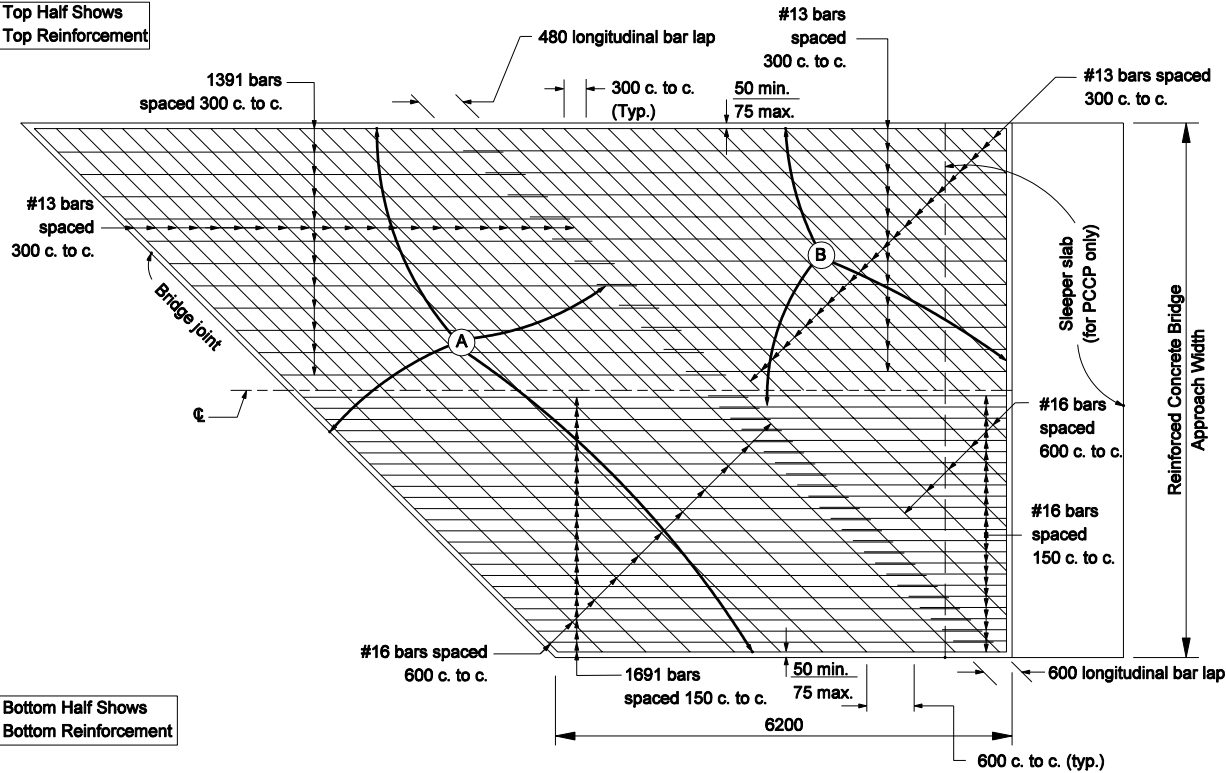


Top Half Shows  
Top Reinforcement

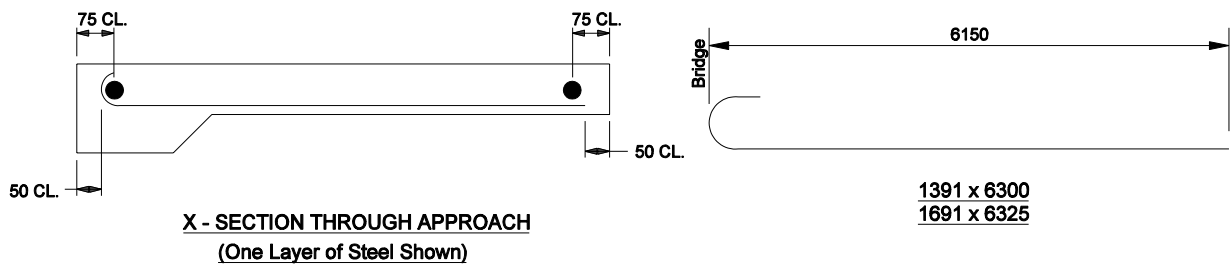


Bottom Half Shows  
Bottom Reinforcement

**NOTES**

1. Area (A) includes all bars of equal length.
2. Area (B) includes all bars of unequal length.
3. See Standard Drawing 609-RCBA-06 for Bill of Materials.
4. All reinforcing bars shall be epoxy coated.

**REINFORCEMENT DETAIL FOR SKEWED APPROACH**



**X - SECTION THROUGH APPROACH**  
(One Layer of Steel Shown)

1391 x 6300  
1691 x 6325

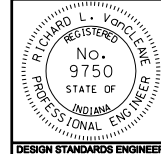
All Dimension are in mm unless otherwise specified

INDIANA DEPARTMENT OF TRANSPORTATION

**REINFORCED CONCRETE  
BRIDGE APPROACH**

SEPTEMBER 2006

STANDARD DRAWING NO. 609-RCBA-04



/s/ Richard L. VanCleave 9-01-06  
DESIGN STANDARDS ENGINEER DATE

/s/ Richard K. Smutzer 9-01-06  
CHIEF HIGHWAY ENGINEER DATE

DESIGN STANDARDS ENGINEER