

NOTES :

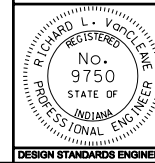
1. All Class VII drives shall be PCCP to at least the Right-of-Way line with minimum length 6 m.
 2. See Standard Drawing 610-DRIV-13 for General Notes and Legend.
 3. See Standard Drawing 610-DRIV-12 for sections A-A, B-B, and C-C.
 4. Joint Placement Detail should be used with Class I, III and VII drives.
 5. The Class VII Drive accommodates a WB-20 (IDV) design vehicle with a 13.7 m turning radius.
- (B) Use ear construction Type B as on Standard Drawing E 605-ERCN-02.
- (C) Use ear construction Type A as on Standard Drawing E 605-ERCN-01.

All Dimension are in mm unless otherwise specified

INDIANA DEPARTMENT OF TRANSPORTATION

**CLASS VII DRIVE AND
JOINT PLACEMENT DETAIL
MARCH 2006**

STANDARD DRAWING NO. 610-DRIV-07



/s/ Richard L. Voth
DESIGN STANDARDS ENGINEER 3-01-06
DATE

/s/ Florian A. Kosmuller
CHIEF HIGHWAY ENGINEER 3-01-06
DATE

DESIGN STANDARDS ENGINEER