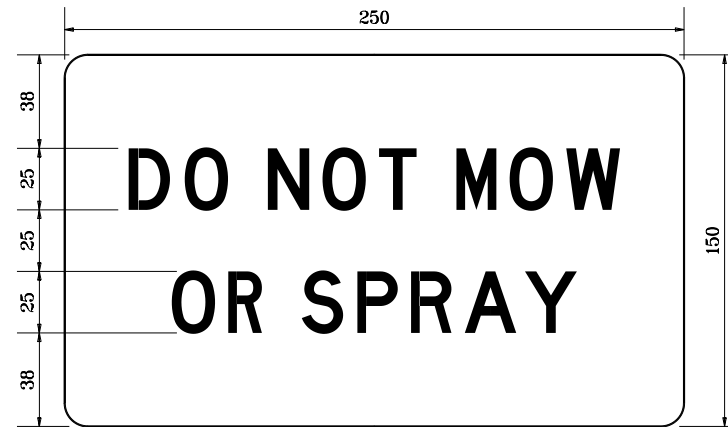


X = Approximate distance from edge of paved shoulder to edge of area not to be mowed, sprayed, or disturbed.



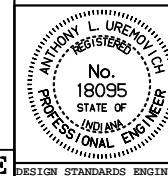
All dimensions are in mm unless otherwise specified.

INDIANA DEPARTMENT OF TRANSPORTATION

LANDSCAPE SIGNS

JUNE 1996

STANDARD DRAWING NO. 622-LSSN-01



/s/ Anthony L. Uremovich 6-03-96  
DESIGN STANDARDS ENGINEER DATE

/s/ Donald W. Lucas 6-03-96  
CHIEF HIGHWAY ENGINEER DATE

Source Sheet: NONE