

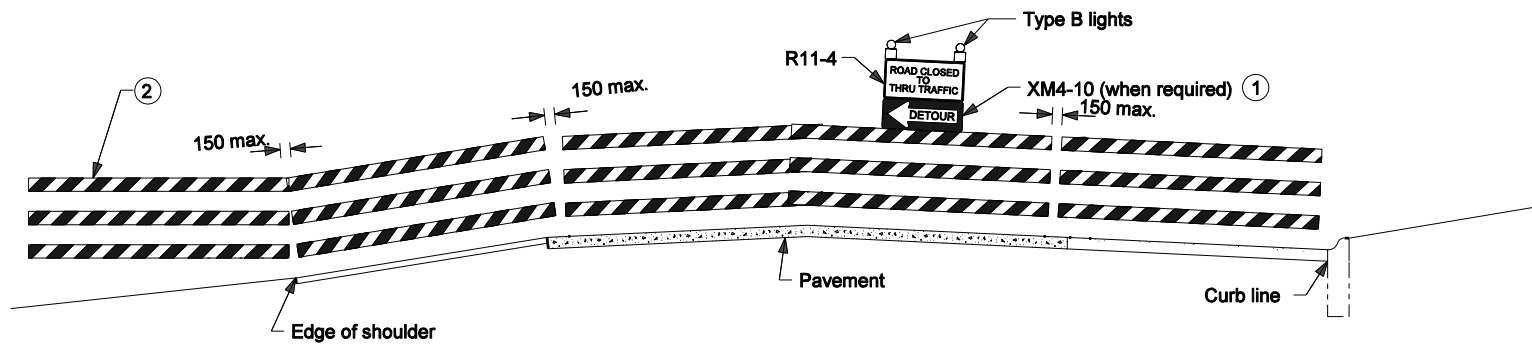
(HALF PLAN WITH SHOULDER SECTION)

PLAN VIEW

(HALF PLAN WITH CURB SECTION)

**GENERAL NOTES**

- ① The Detour Arrow sign shall be used only when a detour route has been signed.
- ② Barricades shall be supported on driven posts in areas outside of the pavement or sidewalk, where side slopes are 3 to 1 or flatter.
3. See standard drawing 801-TCDV-04 for sign use and mounting information.
4. Barricades and supports shall meet NCHRP 350 crash evaluation criteria.
5. See Note 4 on Standard Drawing 801-TCSN-11 for post depth.



(HALF ELEVATION WITH SHOULDER SECTION)

ELEVATION

(HALF ELEVATION WITH CURB SECTION)

**TYPICAL APPLICATIONS OF TYPE III BARRICADES  
ROAD CLOSED TO THRU TRAFFIC**

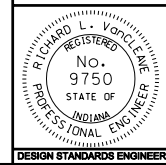
All Dimension are in mm unless otherwise specified

INDIANA DEPARTMENT OF TRANSPORTATION

**TYPE III BARRICADE  
TYPICAL APPLICATIONS**

MARCH 2005

STANDARD DRAWING NO. 801-TCDV-06



/s/ Richard L. VanCleave 3-01-05  
DESIGN STANDARDS ENGINEER DATE

/s/ Richard K. Smutzer 3-01-05  
CHIEF HIGHWAY ENGINEER DATE

DESIGN STANDARDS ENGINEER