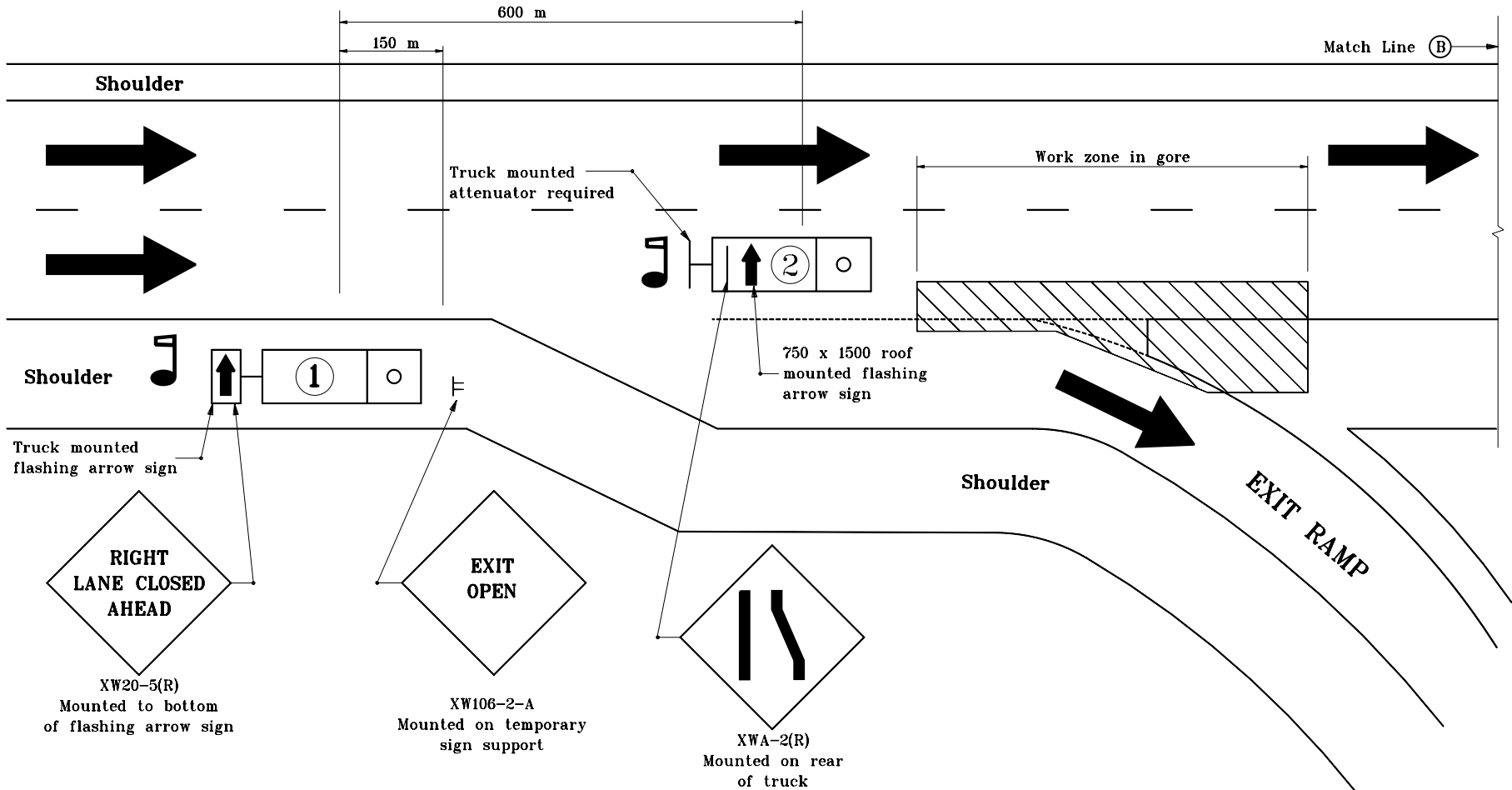


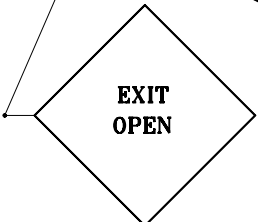
MULTI-LANE DIVIDED HIGHWAY



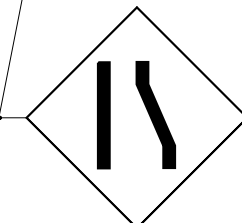
Shoulder  
 Truck mounted flashing arrow sign



XW20-5(R)  
 Mounted to bottom of flashing arrow sign



XW106-2-A  
 Mounted on temporary sign support



XWA-2(R)  
 Mounted on rear of truck

**GENERAL NOTES**

1. Flaggers shall be used while trucks are stopped.
2. Strobe lights shall be used on all vehicles.
3. Distances shown are approximate and may be adjusted as directed.

**LEGEND**

- Flagger
- Truck which may be a pickup
- Truck which shall be 10900 kg GVM or greater

INDIANA DEPARTMENT OF TRANSPORTATION	
MAINTENANCE OF TRAFFIC FOR RPM REFLECTOR REPLACEMENT	
MAY 2000	
STANDARD DRAWING NO. 801-TCTC-09	
	/s/ Anthony L. Uremovich 5-01-00 DESIGN STANDARDS ENGINEER DATE
	/s/ Firooz Zandi 5-01-00 CHIEF HIGHWAY ENGINEER DATE