

GENERAL NOTES

1. Sign centered over appropriate lane unless otherwise shown on cross section.
- ② See Detail A on Standard Drawing 805-SGSC-04
- ③ See Standard Drawing 802-SNCS-03 for Detail B.

1100 extruded aluminum bar fastened by U-bolts

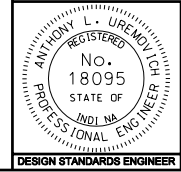
All dimensions are in mm unless otherwise specified

INDIANA DEPARTMENT OF TRANSPORTATION

**CABLE SPAN SIGN
STRUCTURE DETAILS**

SEPTEMBER 2005

STANDARD DRAWING NO. 802-SNCS-01



/s/ Anthony L. Uremovich 9-01-05
DESIGN STANDARDS ENGINEER DATE

/s/ Firooz Zandi 9-01-05
CHIEF HIGHWAY ENGINEER DATE

DESIGN STANDARDS ENGINEER