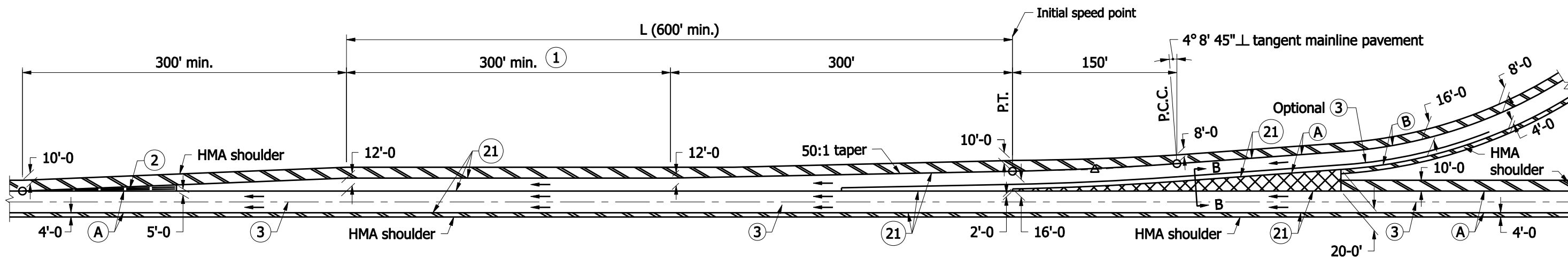


GENERAL NOTES

- ① Required additional length of L above the 600' minimum shall be added to the length of this parallel lane segment. (Example: If required L = 720', then this parallel lane segment length = 420'). See tables on Standard Drawing E 401-REBS-04.
- ② Ear construction type A: 2 lines of #5 bars required (Est. weight = 255 lb). Transverse sawed and sealed joint, in line with pavement contraction joint, shall extend through ear construction. The #5 bars shall be discontinued at such joints. See Detail B-B.
3. See Standard Drawing E 401-REBS-03 for Section B-B.

CURVE DATA

$\Delta = 3^{\circ}00'00''$
 $R = 2864.79'$
 $T = 75.02'$
 $L = 150.0'$
 $E = 0.98'$

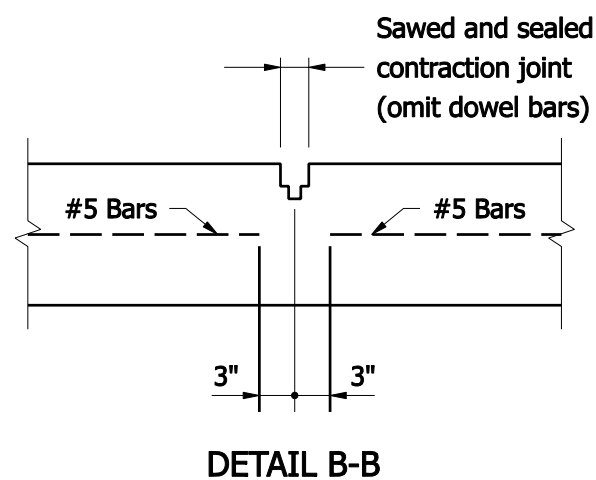


NOTES :

ENTRANCE

LEGEND

- Ⓐ Pavement type and thickness as specified for the mainline.
- Ⓑ Pavement type and thickness as specified for ramps.
- ③ Longitudinal joint
- 21 Longitudinal construction joint
- ▨ HMA shoulder (Thickness of mainline pavement)
- ▩ HMA shoulder (Thickness as specified on Typical Sections)

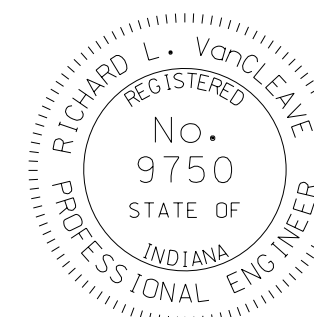


INDIANA DEPARTMENT OF TRANSPORTATION

**RAMP ENTRANCE TERMINAL
HMA SHOULDER**

SEPTEMBER 2008

STANDARD DRAWING NO. E 401- REBS-01



DESIGN STANDARDS ENGINEER

/s/ Richard L. VanCleave 09/02/08
DESIGN STANDARDS ENGINEER DATE

/s/ Mark A. Miller 09/02/08
CHIEF HIGHWAY ENGINEER DATE